

THE MEANING OF KNIFE SWITCH ENERGY STORAGE



What is a knife switch used for? In home circuits, knife switches are commonly used to control the power supply to lighting fixtures, outlets, and other devices. Users can use knife switches to open or close circuits, facilitating control of electrical devices. In the field of industrial automation, knife switches are widely used to control circuitry in equipment.



How do knife switches work? The closing and opening of contacts are controlled by the movement of the blade, allowing users to open or close the circuit as needed. Knife switches are widely used in various low-voltage circuits, primarily for controlling the opening and closing of circuits. Common applications of knife switches include:



What is a knife switch housing? The housing is the external protective shell of the knife switch, used to fix and protect internal components such as the blade, contacts, and operating lever. The housing is typically made of insulating materials to prevent electrical leakage or the risk of electric shock.



What is an open knife switch? Open knife switches were supplanted by safety switches with current-carrying contacts inside metal enclosures which can only be opened by switching off the power. In modern applications, automatic switches (such as contactors and relays) and manual switches such as circuit breakers are used.



Why do I need to turn the knife switch on? ??? When using the knife switch to disconnect the control power, the knife switch must be turned on to prevent power failure. Otherwise, in the event of power restoration, the transmission will be activated, causing not only wasted power but other unexpected hazards as well.

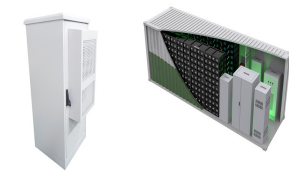
THE MEANING OF KNIFE SWITCH ENERGY STORAGE



What is the operating lever on a knife switch? The operating lever is the part used for manual operation of the knife switch, usually made of insulating materials to prevent electrical leakage or the risk of electric shock. The operating lever is connected to the blade, and pushing or pulling the lever causes the blade to move, controlling the contact state of fixed and moving contacts.



OTF: A tactical style of automatic knife, the term "OTF" is simply short for "Out The Front" and describes a spring-loaded blade that is deployed straight out through the top of a knife's handle at the push of a button or switch ??? and then retracted via another flick of the same button or switch, albeit sometimes in the opposite



Knife. Limit. Switch function. Fig. 1. Switch function refers to the number of poles and throws it has. Schematic symbols are shown for SPST, SPDT, DPST, DPDT, and rotary switches. Dry circuit ??? A low-energy circuit condition where no arcing, melting or softening of the contacts occurs during contact switching. Typically requires gold

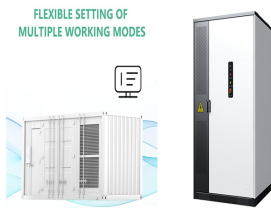


In the field of new energy, GRL's fuse and supporting switch products can be adapted to AC1140V, AC800V, DC800V, DC1000V, DC1500V and other levels of voltage, which are widely used in photovoltaic, wind power, energy storage, grid ???



Opened and Closed Circuits. In keeping with the "open" and "closed" terminology of circuits, a switch that is making contact from one connection terminal to the other (example: a knife switch with the blade fully touching the stationary contact point) provides continuity for electrons to flow through, and is called a closed switch. Conversely, a switch that ???

THE MEANING OF KNIFE SWITCH ENERGY STORAGE



As America moves closer to a clean energy future, energy from intermittent sources like wind and solar must be stored for use when the wind isn't blowing and the sun isn't shining. The Energy Department is working to develop new storage technologies to tackle this challenge -- from supporting research on battery storage at the National Labs, to making investments that take ???



FESS has a unique advantage over other energy storage technologies: It can provide a second function while serving as an energy storage device. Earlier works use flywheels as satellite attitude-control devices. A review of flywheel attitude control and energy storage for aerospace is given in [159].



Flywheel energy storage devices turn surplus electrical energy into kinetic energy in the form of heavy high-velocity spinning wheels. To avoid energy losses, the wheels are kept in a frictionless vacuum by a magnetic field, allowing the spinning to be managed in a way that creates electricity when required.



Uses of Knife Switch. Mersen Knife Switches are designed to be very compact and light with a modular and flexible design to meet your electrical circuit configuration. They are operated manually with of an isolated handle. They are designed to withstand up ???



Long-duration energy storage (LDES) is a key resource in enabling zero-emissions electricity grids but its role within different types of grids is not well understood. Using the Switch capacity

THE MEANING OF KNIFE SWITCH ENERGY STORAGE



Battery Energy Storage Systems. An energy storage system is the ability of a system to store energy using the likes of electro-chemical solutions. Solar and wind energy are the top projects the world is embarking on as they can meet future energy requirements, but because they are weather-dependent it is necessary to store the energy generated



A changeover switch, also known as a transfer switch or a crossover switch, is an electrical device designed to facilitate the transfer of power supply between two sources. It allows users to switch from one power source to another manually or automatically, ensuring a continuous and reliable power supply.



A single-throw knife switch shall not be installed in a manner that will ? . tend to close the switch with gravity 404.6(A) A panelboard is designed to be placed in a ? . The voltage of a storage battery having 12 lead-acid type cells connected in series will be ? . 24V. Type SJ flexible cord is recognized ? . as a hard usage cord Table 400.4.



Based on the SWITCH-China model, this study explores the development path of energy storage in China and its impact on the power system. By simulating multiple development scenarios, ???



Wileman believes the best applications for hydrogen are in the hard-to-abate heavy-duty transportation and long-term energy storage sectors. While some forecasts suggest hydrogen fuel cell electric vehicles will become a USD40 billion market by 2030, as of April 2023 there were only 60 public hydrogen refuelling stations in the entire United States???59 in ???

THE MEANING OF KNIFE SWITCH ENERGY STORAGE



The solution lies in alternative energy sources like battery energy storage systems (BESS). Battery energy storage is an evolving market, continually adapting and innovating in response to a changing energy landscape and technological advancements. The industry introduced codes and regulations only a few years ago and it is crucial to



A knife switch is a type of switch used to control the flow of electricity in a circuit. It is composed of a hinge which allows a metal lever, or knife, to be lifted from or inserted into a slot or jaw. The hinge and jaw are both fixed to an insulated base, and the knife has an insulated handle. Current flows through the switch when the knife is pushed into the jaw. Knife switches can take several forms, includi???



Energy storage is also vital for essential services providers like the telephone industry and healthcare sector which rely mainly upon energy storage (in the form of large batteries for backup in case of power failure). None of the devices and systems returns 100% quantum of the stored energy, meaning that there must be wastage (10%???30%



battery-energy storage through its ability to convert non-critical loads to critical loads (and vice versa) when mission requirements change. Figure 3: Typical BESS system with MV solid-state switch and direct voltage connection to inverter at the BESS system to be able to achieve between 12 ms-15 ms of transfer time. Medium voltage (MV)/



Storage enables electricity systems to remain in balance despite variations in wind and solar availability, allowing for cost-effective deep decarbonization while maintaining reliability. The ???

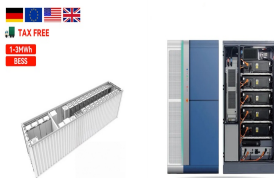
THE MEANING OF KNIFE SWITCH ENERGY STORAGE



The excellent supplier of PV system energy storage system and EV charger to develop more efficient and safer circuit protection system solutions to meet the changing needs of the world. Explore more Product Data Download Customer Service FAQ Cooperation Cases



The HD13 Knife changeover switch is suitable for distribution panels at AC 50HZ, rated voltage up to AC690V and rated ampere t to 3150A. We use cookies to improve your browsing experience. Energy Storage Fuse Link; PV Fuse Link; High Voltage Fuse; Fuse Holder and Fuse Base. Fuse Holder; Fuse Base; Electrical Protection. Fuse Switch



Aiming for 600GW energy storage capacity by 2050 in the EU. Also, power generation is becoming more and more decentralised while energy demand rises ??? and that also requires flexible energy storage. Finally, sector coupling ??? transferring energy to other economic sectors ??? depends on expanding energy storage.



Energy is essential in our daily lives to increase human development, which leads to economic growth and productivity. In recent national development plans and policies, numerous nations have prioritized sustainable energy storage. To promote sustainable energy use, energy storage systems are being deployed to store excess energy generated from ???



Protection and Aggression: The knife's sharpness and ability to cut make it a symbol of protection, yet the same features can also imply aggression or conflict.; Division and Separation: A knife can symbolize the act of cutting ties or making distinctions between choices.; Sacrifice and Suffering: In religious and cultural contexts, knives are often associated with ???

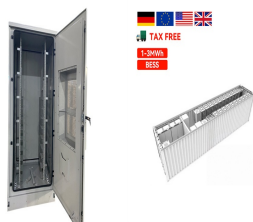
THE MEANING OF KNIFE SWITCH ENERGY STORAGE



The ability to store energy can reduce the environmental impacts of energy production and consumption (such as the release of greenhouse gas emissions) and facilitate the expansion of clean, renewable energy.. For example, electricity storage is critical for the operation of electric vehicles, while thermal energy storage can help organizations reduce their carbon ???



Energy storage systems will need to be heavily invested in because of this shift to renewable energy sources, with LDES being a crucial component in managing unpredictability and guaranteeing power supply stability. PHS is still the most common type of LDES because of its ability to store significant amounts of energy for several hours to days



The spiritual meaning of a knife can also take on a more personal interpretation. It can be seen as a symbol of transformation, of the power of words and thoughts, and of the ability to make choices and take responsibility. In summary, the spiritual meaning of a knife is one of protection, strength, justice, transformation, and personal power.

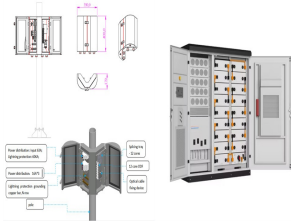


Single throw knife switch: two wiring points, one in and one out; Double throw knife switch: three wiring points, two in and one out; HD series knife switch is a single throw knife switch, which refers to single direction closing. HS series knife switch is a double-throw switch, which can switch to 2 sides to changeover from one to another circuit.



The development path of new energy and energy storage technology is crucial for achieving carbon neutrality goals. Based on the SWITCH-China model, this study explores the development path of energy storage in China and its impact on the power system. By simulating multiple development scenarios, this study analyzed the installed capacity, structure, and ???

THE MEANING OF KNIFE SWITCH ENERGY STORAGE



This high-quality changeover knife switch is typically employed in high voltage or extra high voltage power systems to connect or disconnect power lines. The 4-pole double-throw knife switch is an electrical device designed to open or close a circuit. It comes with a resin base, operates manually, and offers an optional current rating of 100A.



What energy transformation occurs in a hot air balloon? Ans. A hot air balloon uses a propane burner to convert chemical energy into thermal energy. The hot air inside the balloon is less dense than the cold air outside. As a result, hot air rises and pushes the balloon upwards, gaining potential energy.