

THE SIZE OF THE PHOTOVOLTAIC PANEL IS



Sizing is one of the most challenging aspects of choosing any solar power system components. There are many tools out there, such as our solar panel calculator, that can provide an overview of how many and what type of panels you need. However, this can become more difficult to nail down for other components. The charge controller is one of those components ???



The size of a solar panel is often not affected by the output. As discussed, there are two sizes of solar panels, Hence the solar panel dimensions in centimeters would be around, 99x???167.5 cm (for 60-cell) 99x???195.5 cm (for 72- cell) ???



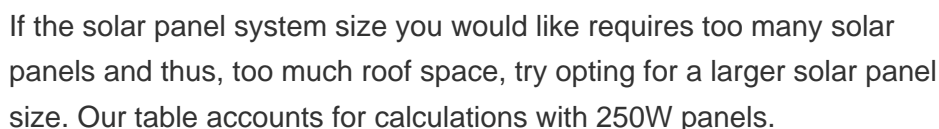
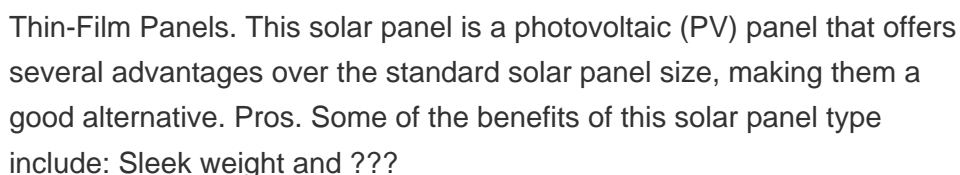
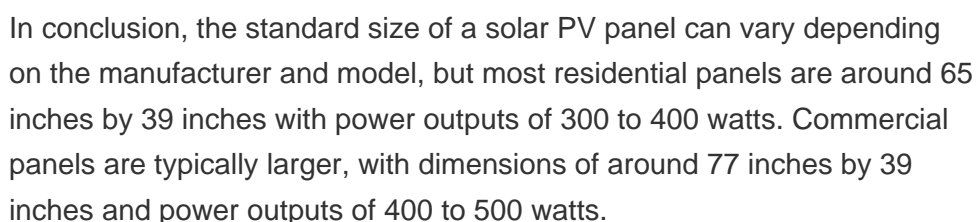
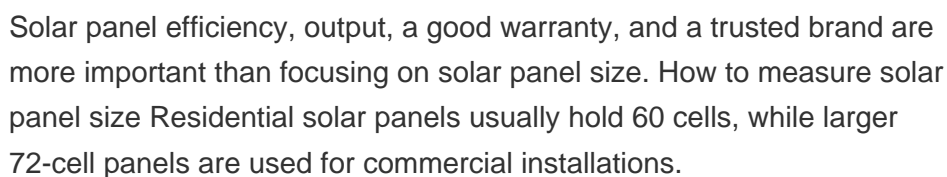
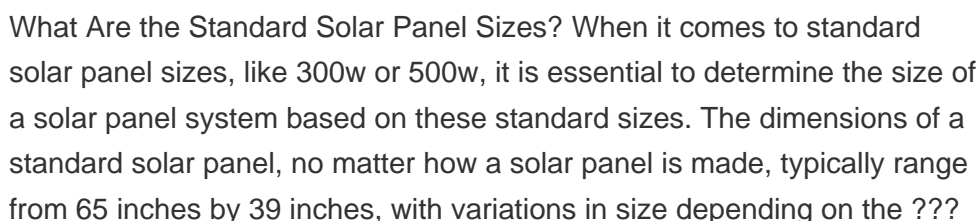
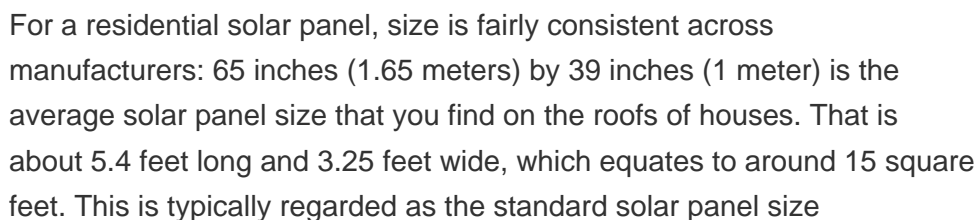
Summary. You need around 200-400 watts of solar panels to charge many common 12V lithium battery sizes from 100% depth of discharge in 5 peak sun hours with an MPPT charge controller.; You need around 150-300 ???



A 4kW solar panel system costs around ?9,500 to buy and install. If you want to include a battery in the installation, this will add around ?2,000 to the price, for an overall cost of ?11,500.



Solar Panel Size: Power Output (Wattage) Solar panel size refers to the amount of power a solar panel can produce over a given time. It's stated in wattage ??? the voltage multiplied by amperage ($V \times A = W$). Voltage is the rate of speed/pressure of electrons moving through an electrical circuit. Volts are named after Italian physicist



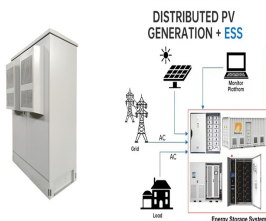
THE SIZE OF THE PHOTOVOLTAIC PANEL IS



Learn how to size a solar system for your home. Here's our step-by-step guide on sizing a solar system that meets your energy needs. If your solar panel's performance warranty guarantees 80% performance after 25 years, then their degradation rate is calculated as 20%/25 years, or 0.8% production loss each year. By the end of its lifecycle



To select the right solar panel size, it is important to know the standard solar panel sizes available on the market. Every solar panel consists of solar cells, which are typically 6-by-6 inches.



The standard solar panel size measures an average of 5.4 by 3.25 feet or 65 by 39 inches. This can cover up to 15 square feet of an area. For commercial installations like in warehouses, you can find solar panels with measurements reaching up to 6 feet. However, the variations can also change from one manufacturer to another.



Standard Solar Panel Size. How big is a solar panel? There are three main sizes of solar panels to know: 60-cell, 72-cell, and 96-cell. For commercial and residential solar panels, the 60-cell and 72-cell solar panels size are most commonly used as the 96-cell measures 17.5 square feet ??? which can make for a challenging fit on your roof.



The size of a 300w solar panel. A 300w solar panel is generally a popular choice for residential applications and small commercial systems thanks to its balance of performance and footprint. A panel of this wattage can generate enough energy to power multiple home appliances and significantly help reduce energy costs.



For example, the equivalent of a 60 cell solar panel is a 120 half-cut cell solar panel. The equivalent of a 72 cell solar panel is a 144 half-cut cell solar panel. 120 half-cut cell solar panels are roughly the same size as 60 cell solar panels, and 144 half-cut cell solar panels are roughly the same

THE SIZE OF THE PHOTOVOLTAIC PANEL IS

size as 72 cell solar panels.

THE SIZE OF THE PHOTOVOLTAIC PANEL IS



The size of a solar panel will directly impact the number of solar cells that can fit onto the panel, which determines how much electricity can be generated from captured solar power. Dimensions of solar panels differ ???



Using the average solar panel size of 6 feet by 3.25 feet, and assuming you leave minimal space between the panels, your rooftop solar system would measure roughly 4,875 square feet. Now, let's consider the weight of that system. At 50 pounds per panel, the array would weigh in at 12,500 pounds or a little over 2.5 pounds per square foot.



Solar panel size is a crucial factor to consider, as it is the element that ensures that your energy needs are met by your solar system. Solar panel sizes like 350W or 450W can generally easily tend to the electricity consumption requirements of small to large households. However, you will want to keep in mind that the larger the solar panel



Solar Panel Size. It focuses on maximum electricity generation and overall capacity rather than the quantity of panels. To calculate the required system size, multiply the number of panels by the output. For example, a 6.6 kW solar system typically consists of 20 panels each delivering 330W of power.



When considering solar panel dimensions, weight can vary based on their solar panel size and type. For residential installations in the UK, panels generally weigh between 18-21 kg each. Commercial PV panels tend to be heavier and range anywhere between 22-30 kg.

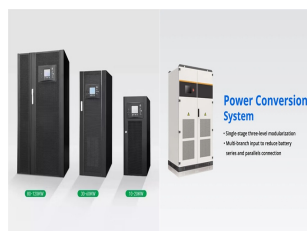


The size or dimensions of the solar panels, measured in height by width, will determine the number of solar panels that will fit on your roof and the wattage of solar panels installed. And the power produced or wattage (measured in Watts or W) by the solar PV system depends on the number

THE SIZE OF THE PHOTOVOLTAIC PANEL IS

of solar panels installed.. The solar panel dimensions are measured ???

THE SIZE OF THE PHOTOVOLTAIC PANEL IS



Solar panel dimensions depend on how many cells are in each panel, as cell size is pretty uniform across all brands of residential solar panels. Each cell is usually 156 millimeters by 156 millimeters, or 6 inches long and 6 ???



What size solar battery for solar panels? 4 kW solar system with a battery ??? Homes with a 4 kilowatt peak (kWp) solar panel system will need a storage battery with a capacity of 8???9 kW. This capacity will allow the solar system to efficiently charge it. 5 kW solar system with a battery ??? If your home has a 5 kWp solar system, you'll want a battery capacity of between ???



Solar panels generate clean energy and significant savings, but they aren't a one-size-fits-all solution. The size and weight of solar panels vary depending on the make and model, with most residential panels measuring about 5.5 feet ???



How does solar panel size relate to the amount of electricity it produces? Different solar panels generate different amounts of energy, and this capacity to produce power isn't just about size. For example, a smaller sixty cell solar panel with an efficiency of 20% can generate more electricity than a seventy-two-cell unit that only has an efficiency of 15%.



Solar panel size refers to the total amount of power a solar panel can generate over a period of time; Solar panel dimensions refers to the physical size of a solar panel; Solar panel sizes and wattage range from 250W ???

THE SIZE OF THE PHOTOVOLTAIC PANEL IS



Work out what size panels to use. A typical solar panel is rated at 350 W. In the UK, it'll produce 265 kWh per year, on average. That means if you divide your annual electricity usage by 265, you'll end up with roughly the right number of solar panels for your home.