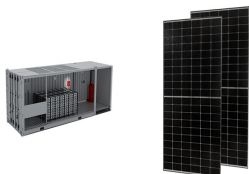


# TRAM ENERGY STORAGE DORMITORY

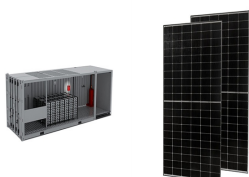
---



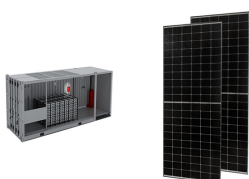
What is a battery powered tram? The new technology is based on an onboard energy storage system(OBESS),with scalable battery capacity. It can be installed directly on the roof of existing trams - saving on costs,and visual impact ??? all while ensuring better environmental performance for a more sustainable society. In Florence,battery powered trams have been tested since 2021.



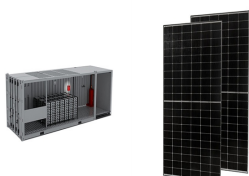
Are there battery powered trams in Florence? In Florence,battery powered trams have been tested since 2021. Fitted to trams on the existing Sirio fleet,the battery technology enables the trams to operate on a section of the line entirely under battery power,without the use of overhead infrastructure.



Should rail vehicles have onboard energy storage systems? However, the last decade saw an increasing interest in rail vehicles with onboard energy storage systems (OESSs) for improved energy efficiency and potential catenary-free operation. These vehicles can minimize costs by reducing maintenance and installation requirements of the electrified infrastructure.

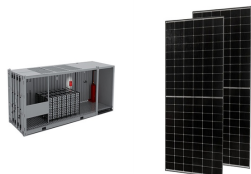


Does Hitachi Rail offer a battery-powered tram? Hitachi Rail???s battery-powered tram technologyoffers the major benefit of requiring no electrified infrastructure. Our trams can operate on sections of routes with no overhead wires,such as historic city centres,like Florence,Italy,and offer range increase of up to 5km.

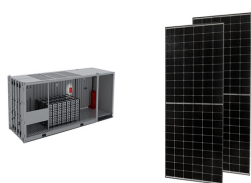


How much energy does a hybrid storage system use? The total weight of the hybrid storage system is 1646 kg,resulting in specific energy and power of 11.45 Wh/kgand 226 W/kg,respectively. The storage solution demonstrates effective energy savings and wireless operation capability up to 2.5 km.

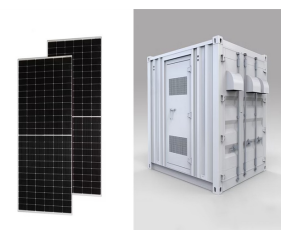
# TRAM ENERGY STORAGE DORMITORY



Where are hydrogen trams being tested? Testing of trial hydrogen trams has started recently in the cities of Saint Petersburg, Russia, and San Bernardino, California.



In 2019, lithium-ion soft packed battery cell manufacturing plant was built in Huizhou; In 2021, the Energy Storage Pack Division was found; In 2022, integrated the BMS protection board, battery cell, Energy Storage Pack new energy three core departments to set up Shenzhen Bullcube Energy Technology Co.LTD. it's total production area



The trams with the energy storage system have been assembled and have completed the relative type tests. The energy storage system on the trams has been convinced to meet the requirements of catenary free tram network for both at home and abroad. This technology improves the technical level of domestic tram development greatly and promotes ???



TRAM ENERGY, soci?t? ? responsabilit? limit?e, au capital social de 15000,00 EURO, dont le si?ge social est situ? au 9 RUE SULLY PRUDHOMME, 97420 LE PORT, immatricul?e au Registre du Commerce et des Soci?t?s de St-Denis de la Reunion sous le num?ro 979282787 repr?sente par M Jean TIFAIRE RINAMBALY agissant et ayant les pouvoirs



different ESS are compared to the energy consumption of a tram without ESS, whose braking energy is received by other vehicles at the power section. It can be seen that even in the case of driving with a grid power supply, the energy storage can significantly reduce energy consumption. The energy consumption of the tram

# TRAM ENERGY STORAGE DORMITORY



In this study, we investigated the performance of air-to-water heat pump (AWHP) and energy recovery ventilator (ERV) systems combined with photovoltaics (PV) to achieve the energy independence of a dormitory building and conducted an analysis of the energy independence rate and economic feasibility by using energy storage devices. Our data were collected for 5 ???



Implementation of energy storage system on-board a tram allow the optimised recovery of braking energy and catenary free operation. Figure 3 shows the schematic which allows energy storage to be implemented on-board a tram. The braking resistor is installed in case the energy storage is unable to absorb braking energy. The energy flow



Uneven heat dissipation will affect the reliability and performance attenuation of tram supercapacitor, and reducing the energy consumption of heat dissipation is also a problem that must be solved in supercapacitor engineering applications. This paper takes the vehicle supercapacitor energy storage power supply as the research object, and uses computational ???



An alternative is catenary free trams, driven by on-board energy storage system. Various energy storage solutions and trackside power delivery technologies are explained in [4], [5]. Lithium-ion



negative effects of the electrical energy storage based on the flywheel or on capacitors, it is necessary to find the right simulation model. This paper tries to focus on one possible configuration of the electrical energy storage system and creates a background analysis and models of all technological parts have to be defined.

# TRAM ENERGY STORAGE DORMITORY



The energy storage system works as a short time storing and supporting electrical device. The result of this experiment is presented in Fig. 5.

REFERENCES [1] L. Streit, P. Drabek, "Simulation model of tram with energy storage system," 2013 International Conference on Applied Electronics, Pilsen, 2013, pp. 1-4. [2] L. Latkovskis, V. Brazis



Since a shared electric grid is suffering from power superimposition when several trams charge at the same time, we propose to install stationary energy storage systems (SESSs) for power supply network to downsize charging equipment and reduce operational cost of the electric grid.

? 1/4 ????-? 1/4 ???? ??????. ? 1/4 ?. ???



A hybrid energy storage system (HESS) of tram composed of different energy storage elements (ESEs) is gradually being adopted, leveraging the advantages of each ESE. The optimal sizing of HESS with a reasonable combination of different ESEs has become an important issue in improving energy management efficiency. Therefore, the optimal sizing method of battery ???



This paper introduces an optimal sizing method for a catenary-free tram, in which both on-board energy storage systems and charging infrastructures are considered. To quantitatively analyze the trade-off between available charging time and economic operation, a daily cost function containing a whole life-time cost of energy storage and an expense of ???

# TRAM ENERGY STORAGE DORMITORY



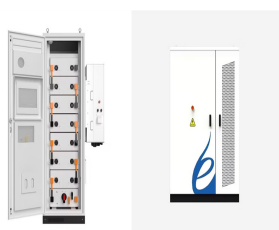
A tram with on-board hybrid energy storage systems based on batteries and supercapacitors is a new option for the urban traffic system. This configuration enables the tram to operate in both



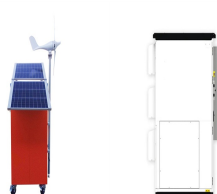
A tram with on-board hybrid energy storage systems based on batteries and supercapacitors is a new option for the urban traffic system. This configuration enables the tram to operate in both



Trams with energy storage are popular for their energy efficiency and reduced operational risk. An effective energy management strategy is optimized to enable a reasonable distribution of demand power among the storage elements, efficient use of energy as well as enhance the service life of the hybrid energy storage system (HESS). Thus, an energy ???



Electrical and thermal consumption related to buildings, whether civil, commercial, public, or of any other kind, is very much in focus today. With today's targets for energy savings, reduction of consumption, and environmental impact, it is necessary to carry out energy retrofits to modernize installations and their management. The realization of an ???



In order to design a well-performing hybrid storage system for trams, optimization of energy management strategy (EMS) and sizing is crucial. This paper proposes an improved EMS with energy



Yiwei Energy Storage Company's dormitory is designed to accommodate employees comfortably and conveniently, offering several features that promote well-being. 2. The dormitory includes various amenities aimed at fostering a sense of community. 3. Room layouts are structured to provide

# TRAM ENERGY STORAGE DORMITORY

---

personal space while ensuring accessibility to shared

# TRAM ENERGY STORAGE DORMITORY



Energy storage systems (ESSs) play a significant role in performance improvement of future electric traction systems. This paper investigates an ESS based on supercapacitors for trams as a



Hybrid energy storage systems (HESSs) comprising batteries and SCs can offer unique advantages due to the combination of the advantages of the two technologies: high energy density and power density. The tram has a hybrid storage system comprising two 150 kW fuel cell stacks, two battery packs of 20 kWh each, and two SC modules with a rated



DOI: 10.1016/J.EGYPRO.2017.10.091 Corpus ID: 117429825;  
Determination of Optimal Energy Storage System for Peak Shaving to Reduce Electricity Cost in a University  
@article{Prasatsap2017DeterminationOO, title={Determination of Optimal Energy Storage System for Peak Shaving to Reduce Electricity Cost in a University}, author={Unchittha ???}



A tram's hybrid power system mainly consists of an energy storage system and a motor system. The motor system is connected to the DC bus through the inverter, whose power is all from the hybrid



The modern tram system is an important part of urban public transport and has been widely developed around the world. In order to reduce the adverse impact of the power supply network on the urban landscape and the problem of large line loss and limited braking energy recovery, modern trams in some cities use on-board energy storage technology.



# TRAM ENERGY STORAGE DORMITORY

---



Power system reliability can be improved with the use of energy storage. Energy storage technologies are examined critically, including storage kinds, categorizations, and comparisons. Electrochemi



A Hybrid Energy Management Strategy based on Line Prediction and Condition Analysis for the Hybrid Energy Storage System of Tram . A battery???supercapacitor hybrid energy-storage system (BS-HESS) is widely adopted in the fields of renewable energy integration, smart- and micro-grids, energy integration systems, etc. Focusing



Overall capacity allocation of energy storage tram with ground charging piles XIE Yuxuan, BAI Yunju, XIAO Yijun (Overhaul and Maintenance Factory, China Yangtze Power Co., Ltd., Yichang 443000, Hubei, China) Abstract: In recent years, the development of energy storage trams has attracted considerable attention.