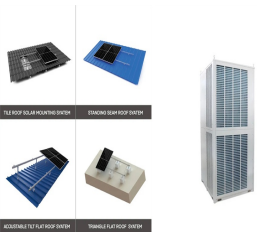


TRINA PHOTOVOLTAIC PANEL 395



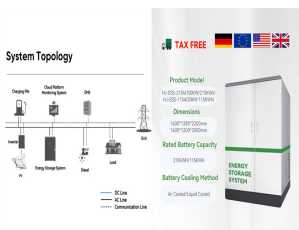
Trina Solar Co., Limited Solar Panel Series Vertex S TSM-DE09.08 390-405W. Detailed profile including pictures, certification details and manufacturer PDF SunEvo Solar - Evo6N SE6-66HBD 695-715W Bifacial HJT Solar Panel From ???0.0896 / Wp Solar Panel MY Solar - M10 Series MY-M10/144-540-560W From ???0.062 / Wp 395 Wp 400 Wp



Trina Solar 395W Solar Panel 120 Cell Vertex S Series TSM-395-DE09.05 at A1SolarStore. Menu; Store. Store; Solar panels . Back. Wattage. 360 watt; 365 watt; 370 watt; 375 watt; 380 watt; Trina 395W Solar Panel ???



P-V CURVES OF PV MODULE (395 W) I-V CURVES OF PV MODULE (395 W) DIMENSIONS OF PV MODULE (mm) ELECTRICAL DATA (STC) TSM-390 DE09.08 TSM-395 DE09.08 TSM-400 DE09.08 TSM-405 DE09.08 Peak Power Watts-PMAX (Wp)* 390 395 400 405 Power Tolerance-PMAX (W) 0/+5 0/+5 0/+5 0/+5 Maximum Power Voltage-VMPP (V) 33.8 34.0 34.2 ???



W PV Mod solar panel with TS4 Connector, PV Wire ~55", 35mm Clear Frame with White Backsheet. Look into detailed descriptions, ratings, reviews, pictures at A1 Solar Store Trina 395W Solar Panel 144 cell ???



Trina Vertex 395W Monocrystalline Solar Panel. 01444 672005. info@pluginsolar .uk. Login | Cart: (0) ?0.00 | Checkout. DIY Solar Kits; New Build Solar Kits; Hybrid Solar Kits; JA Solar 435W N-Type Bifacial Double Glass All Black Solar Panel. Bi-Facial Solar Panels, JA Solar, Solar Panels, Standard Solar Panels. ?65.60 (ex. VAT) ?78.72

TRINA PHOTOVOLTAIC PANEL 395



At CEF we sell the best solar panels for your needs. Commercial PV panels or home solar panels, we have them all. Click here and start to make renewable energy for yourself. National 7:30am to 8pm - Mon-Fri 01763 272 717. Sign In Selected Store. Select a store. Trade Account Sign In ?0.00 0 items 0.



Trina standard Guaranteed Power 90% 100% Years 5 10 15 20 25 98.0% 84.8% 395 34.0 11.62 41.0 20.5 298 31.9 9.32 38.6 9.84 Photovoltaic Technology Cable 4.0mm?? (0.006 inches??), MC4 EVO2 / TS4* 120 cells Black-White Module Dimensions Weight Glass Encapsulant material Backsheet Frame



??? Any module or panel mounting system has limitations on specific inclination required to maintain a specific System Fire Class Rating. ??? Where common grounding hardware (nuts, bolts, star washers, spilt-ring lock washers, flat washers and the like) is ??? The fire rating of a Trina Solar PV module is valid only when mounted in the



Panel fotowoltaiczny Trina 395 Vertex S TSM-DE09.08 BF ?????,? Skorzystaj z Szerokiej Oferty Produkt?w w Niskich Cenach ?,? Rabaty dla Instalator?w ?,? Pomo? 1/4 emy w wyborze - Sprawdz??! kt?rzy s?? na etapie doboru ???

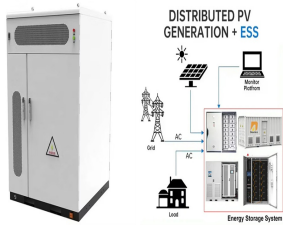


Trina Vertex S TSM-395DE09.08 395 Wp - 395 Watt Ultra-Hochleistungs-Modul, Trina Vertex-Technologie mit 210-mm-Halbzellen leitet eine neue ?ra ein. 25 kWp Ja Solar PV-Anlage + Fronius Gen24 + BYD HVM 16.6 Speicher Inhalt: 1 St?ck 18.750,00



Von Bloomberg New Energy Finance als einer der weltweit vertrauensw?rdigsten Hersteller von Solarmodulen eingestuft, ist Trina Solar der Anbieter, den Sie sich f?r Ihrer Solarmodule w?nschen.

TRINA PHOTOVOLTAIC PANEL 395



A substantial 15-year product warranty is also included with this 395 W Trina Solar solar panel. A panel that can handle hail, wind and snow. The 1.18" frame built of anodized aluminum and a layer of protective tempered glass make this module weather-resistant. The front side of the modules can withstand a 2400 Pa load, whereas the back side



A substantial 25-year product warranty is also included with this 395 W Trina Solar solar panel. Certified for the most challenging environmental conditions. TRI-TSM-395-DE09C07 is resistant to PID, salt, acid and ammonia. It can also withstand up to 6000 Pa mechanical load on the front and 5400 Pa on the back. Such robustness is mainly due to



Trina Solar Panel Range. Trina Solar manufactures an extensive range of solar panels for residential, commercial and utility-scale installations, incorporating many of the latest cell technologies, including multi-busbar PERC cells, large 210mm third-cut cells, and, more recently, the high-density panel format with N-type TOPCon monocrystalline cells.



Best solar panel Trina vs. best solar panel SunPower: By A1 Solar Store. Let's compare the two best panels from these two manufacturers. Looking at concrete examples will make it easier to understand the strengths ???



Compare solar panels - a side-by-side comparison with solar panel pricing, specifications and other information on popular brands and models. Solar Quotes. Ready to get up to 3 quotes for solar, batteries or EV chargers? ???



Trina Tallmax M TSM-395 DE15M(II) 395W 144-cell Solar Panel Call Or Email For Availability . The product is in stock. Usually ships in less than 24 hours. SKU TSM-DE15M (II) Request Quote Trina Solar Tallmax Solar Panel Warranty. Trina guarantees their module output to be at or above its

TRINA PHOTOVOLTAIC PANEL 395

nameplate wattage, and they back every module with a

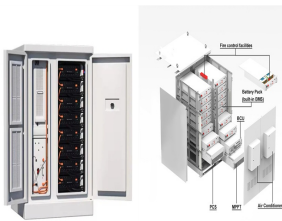
TRINA PHOTOVOLTAIC PANEL 395



395 W+ MAXIMUM POWER OUTPUT POSITIVE POWER TOLERANCE
 MAXIMUM EFFICIENCY Outstanding Visual Appearance ??? Designed
 with aesthetics in mind ??? Ultra-thin, virtually invisible busbars ???
 Excellent cell color control by machine selection Small in size, big on
 power ??? Generates up to 395 W, 20.5 % module efficiency with high
 density



What really sets this 395W solar panel apart from the competition is
 Trina's 25/25 warranty - a bundled 25-year product and 25-year power
 output warranty in the United States with no strings attached - and its
 transparent backsheet, which allows it to collect reflected photons on its
 underside, acting as a bifacial solar panel.



Holder of Certificate: Trina Solar Co., Ltd No. 2 TianHe Road, Trina PV
 Industrial Park New District 213031 Changzhou City, Jiangsu Province
 PEOPLE'S REPUBLIC OF CHINA Certification Mark: Product: Crystalline
 Silicon Terrestrial Photovoltaic (PV) Modules [Mono & Poly Crystalline
 Silicon Photovoltaic (PV) Module(s)]



The Trina TSM-DE09M.05 is a 395W monocrystalline solar module from
 the Vertex S range. Designed with aesthetics in mind, this solar panel
 boasts excellent colour control thanks to a dedicated cell blackening
 treatment and machine selection. Panels in the Vertex S range offer
 ultra-high power with excellent efficiency.



Solar Panels PV; Trina Vertex S 395W Black Framed Mono (white
 backsheet) Trina Solar. Trina Vertex S 395W Black Framed Mono (white
 backsheet) ?127.19. SKU: TSM-DE09.08 395 Weight: 21.00 KGS Width:
 109.60 CM Height: 175.40 CM Depth: 3.00 CM Shipping: Calculated at
 checkout : Quantity: Product Description. Trina Vertex S 395W Black
 Framed Mono

TRINA PHOTOVOLTAIC PANEL 395



The Trina TSM-DE09M.05 is a 395W monocrystalline solar module from the Vertex S range. Designed with aesthetics in mind, this solar panel boasts excellent colour control thanks to a dedicated cell blackening treatment and ???



Trina Vertex 395W Monocrystalline Solar Panel. Click to enlarge. Trina Vertex 395W Monocrystalline Solar Panel. ?107.99 (ex. VAT) ?129.59 (inc. VAT) Out of Stock. SKU: TSM-DE09.08. Posted in Trina, Solar Panels, Standard Solar Panels. Description; Reviews (0) ???



Trina Vertex 395W Monocrystalline Solar Panel. 01444 672005. info@pluginsolar .uk. Login | Cart: (0) ?0.00 | Checkout. DIY Solar Kits; New Build Solar Kits; Hybrid Solar Kits; Aiko Comet 1N 615W N-Type ABC, 72 Cell, Silver Framed Solar Panel (Gen 2) Aiko, Solar Panels, Standard Solar Panels. ?89.99 (ex. VAT) ?107.99 (inc. VAT)



Image credit: Trina Solar. Trina Solar is the industry's Goldilocks option. Known for dependable solar panels that won't break the bank, the China-based solar panel manufacturer offers a middle ground between premium ???



GHPV solar is a professional solar panel supplier. We offer high - quality products including Trina solar panel, Longi solar panel, Jinko solar panel and JA solar panel. Our solar panels are reliable, efficient and environmentally friendly, providing excellent performance for various energy - related applications. Tiger N-Type 66TR (395



W Solar Panel 120 Cell TSM-390-DE09C07 solar panel with a 120 half-cell module | Look into detailed descriptions, pictures - A1 Solar Store. Menu; Store. Store; Solar panels . 395 watt; 400 watt; 405 watt; 410 watt; 415 watt; 425 watt; 440 watt; 450 watt; 530 watt; 535 watt; 540

TRINA PHOTOVOLTAIC PANEL 395

watt; 545 watt; 550 watt; 645 watt; 675 watt; 680

TRINA PHOTOVOLTAIC PANEL 395



Trina, Tallmax M, 395W PV Module, TS4 Connector, PV Wire ~55", 35mm Clear Frame with White Backsheet, 144 1/2 Cell Multi-BB Mono, 20A Fuse, 1500VDC, 3.2mm glass, 370.4 PTC, TSM-395-DE15M(II) Founded in 1997, Trina Solar is the world's leading comprehensive solutions provider for solar energy.