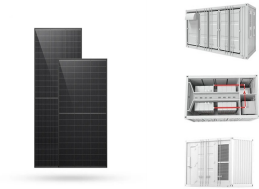


TRONY SOLAR CELL SÃO TOMÉ AND PRÍNCIPE



Does Sao Tome & Principe have solar power? According to data from the International Renewable Energy Agency (IRENA), Sao Tome and Principe did not have any grid-connected solar generation capacity installed at the end of 2021. The World Bank says Sao Tome and Principe has an electricity access rate of around 76%, with 92% of the total coming from imported diesel.



When will a 300 kW power plant be installed in Sao Tome? Cleanwatts told pv magazine that it started developing 1.1 MW at Sao Tome airport and 300 kWp at Principe airport in August. It expects to complete the arrays by the end of this year. Another 300 kWp will be installed next year at other communities in Sao Tome.



Where will solar power plants be installed in Sao Tom?? The company will collaborate with the public utility Power and Water Company (EMAE) to install solar power plants across the country. The first phase of the program will include the installation of solar PV plants at the São Tomé international airport, as well as on the island of Príncipe, with capacities of 1.1 kW and 300 kW, respectively.

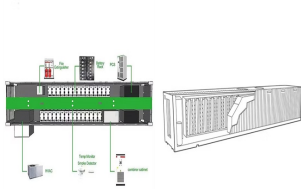


Portuguese cleantech company Cleanwatts has signed an agreement with São Tomé and Príncipe in Africa for the production and sale of clean energy. The company will ???



Here is a list of cities and towns in São Tomé and Príncipe. These are villages, towns, and cities with populations over 300. The date of censuses are August 4, 1991, August 25, 2001, and January 1, 2005: Cities in São Tomé and Príncipe Rank Place Population District Census 1991

TRONY SOLAR CELL SÃO TOMÁ AND PRÁ-NCIPE



1. Onde fica São Tomé e Príncipe (STP) São Tomé e Príncipe, situa-se no Golfo da Guiné, a cerca de 150 milhas das costas da Guiné e do Gabão, no continente africano. Visto do espaço, é um pontinho verde no meio do oceano, um arquipélago com ilhas vulcânicas atravessadas pela linha do Equador. As duas ilhas principais são São



The earliest sunrise of the month in São Tomé is 5:13 AM on November 3 and the latest sunrise is 5 minutes later at 5:18 AM on November 30.. The earliest sunset is 5:19 PM on November 3 and the latest sunset is 5 minutes later at 5:25 PM on November 30.. Daylight saving time is not observed in São Tomé during 2024. For reference, on June 20, the longest day of the year, the ???



Solar energy, with its strong decentralized potential, is an energy potential for Santomeans in rural and peri-urban areas. Since the colonial era, STP has been supporting its renewable potential ???



São Tomé and Príncipe (STP for short) consists of two main islands straddling the Equator off the Atlantic coast of Central Africa.. The Portuguese were the first settlers of these previously uninhabited islands in the late 15th century. Attracting settlers proved difficult, however, and most of the earliest inhabitants were "undesirables" sent from Portugal, mostly Jews.



The presidency of São Tomé and Príncipe in the CPLP is focused on cooperation in the energy sector, following the theme "Youth and Sustainability in the CPLP". II CPLP ENERGY Conference: Driving a Resilient, Sustainable and Inclusive ???

TRONY SOLAR CELL SÃŁO TOMÃ© AND PRÃ-NCIPE



The two islands of SŁo TomŁ and Principe, along with a few associated rocky islets, are located in the Gulf of Guinea on the southern coast of West Africa. The main islands are a mix of flat and mountainous areas of seemingly dormant volcanoes. SŁo TomŁ Peak is the highest point in the group, reaching a height of 2,024 metres (6,640 ft).



Cleanwatts has signed a contract with the local government under which it will install and connect to the grid solar photovoltaic (PV) arrays at the national airport in Sao Tome, as well as on the island of Principe.



SŁo TomŁ and PrŁncipe offers a truly immersive cultural experience, where you can soak in the rich traditions and heritage of this unique island nation. Whether you're exploring the local cuisine, dancing to lively ???



SŁo TomŁ and PrŁncipe (often called just "SŁo TomŁ" for short) is a small island nation off the Atlantic coast of Central Africa, located in the Gulf of Guinea, straddling the Equator, west of Gabon. Discovered and claimed by Portugal in the late 15th century, the islands' sugar-based economy gave way to coffee and cocoa in the 19th century -- all grown with plantation ???



Here's the current STP Airways flight schedule for journeys between Lisbon and Sao Tome, as well as between the two islands.. Read more: A quick overview of SŁo TomŁ and PrŁncipe. The Perfect 10 Day SŁo TomŁ ???

TRONY SOLAR CELL SÃŁO TOMÃ© AND PRÃ-NCIPE



114KWh ESS



Known locally as "cobra jita", this forest-dwelling snake is a subspecies of house snake found only on SŁo TomŁ. Justin Foulkes / Lonely Planet. It's nesting season on SŁo TomŁ and I take a night-time walk along Praia Grande to get closer. It proves to be an astounding yet nightmarish experience.



114KWh ESS



Food and drink in SŁo TomŁ & PrŁncipe. The staple item of the Santomean diet and standard restaurant fare is fish ??? grelhado ??? grilled, baked (asado) or to a lesser degree cooked/boiled (cozido). The most popular are flying fish (peixe voador), and you will see these cut open and laid out to dry on the beach or in drying sheds in large quantities.

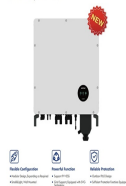


SŁo TomŁ and PrŁncipe submitted its updated NDC in 2021. The updated NDC has an emissions reduction target of 27% by 2030. The updated NDC has a broader sectoral approach covering energy, transport, fishery, agriculture, livestock farming, forestry, water, waste, civil protection, and resilience for the most vulnerable communities. The total estimated cost of NDC ???



SŁo TomŁ & PrŁncipe (STP) is amazingly safe and welcoming to visitors, particularly ecotourists, for whom the advancing jungle is a delight. This is particularly true on tidy and unspoiled PrŁncipe, an island of just 7000 people. A canopy of green broken by spires of primordial rock, PrŁncipe is a magnificent Lost World, offering fantastic

20KW modular power converter



INTEGRATED DESIGN
EASY TO TRANSPORT AND INSTALL.
FLEXIBLE DEPLOYMENT

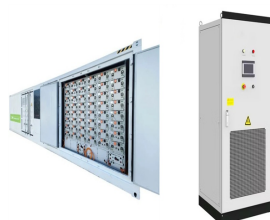


SŁo TomŁ und PrŁncipe (seltener Sankt Thomas und Prinzeninsel [5]), portugiesisch SŁo TomŁ e PrŁncipe [sŁŁŁŁwŁŁ tuŁŁmŁŁ i ŁŁpŁ 3/4 Ł(C)sŁŁpŁŁ], ist ein Inselstaat im Golf von Guinea, etwa 200 km vor der KŁste Afrikas westlich vor Łquatorialguinea und Gabun. Die Insel SŁo TomŁ ist nach dem Heiligen Thomas benannt; PrŁncipe ist die ŁŁŁInsel des Prinzen" (oder: des ŁŁŁFŁrsten").

TRONY SOLAR CELL SŁO TOMÁ AND PRÁ-NCIPE



Holidays to Słó Tomá and Práncipe. Be transported to a world untouched by the hustle of modern life, where time stands still and the clear waters of the Atlantic lap against golden sands; welcome the idea of holidays to Słó Tomá and Práncipe.



"In 2021, Słó Tomá and Práncipe exported USD17 million in Cocoa Beans, making it the 28th largest exporter of cocoa beans in the world," according to Observatory of Economic Complexity (OEC). Food processing industries have also been taking root in Słó Tomá and Práncipe, especially in the form of fish processing.



May Weather in Słó Tomá Słó Tomá & Práncipe. Daily high temperatures decrease by 2°F, from 81°F to 79°F, rarely falling below 77°F or exceeding 83°F.. Daily low temperatures decrease by 2°F, from 80°F to 78°F, rarely falling below 76°F or exceeding 82°F.. For reference, on March 16, the hottest day of the year, temperatures in Słó Tomá typically range from 81°F to 82°F



June Weather in Słó Tomá Słó Tomá & Práncipe. Daily high temperatures decrease by 2°F, from 79°F to 77°F, rarely falling below 75°F or exceeding 81°F.. Daily low temperatures decrease by 2°F, from 78°F to 76°F, rarely falling below 74°F or exceeding 80°F.. For reference, on March 16, the hottest day of the year, temperatures in Słó Tomá typically range from 81°F to 82°F



The latest sunrise of the month in Słó Tomá is 5:29 AM on September 1 and the earliest sunrise is 10 minutes earlier at 5:19 AM on September 30.. The latest sunset is 5:36 PM on September 1 and the earliest sunset is 10 minutes earlier at 5:26 PM on September 30.. Daylight saving time is not observed in Słó Tomá during 2024. For reference, on June 20, the longest day of the year, ???

TRONY SOLAR CELL SÃO TOMÁ AND PRÍNCIPE



In S?o Tom?, the average percentage of the sky covered by clouds experiences significant seasonal variation over the course of the year.. The clearer part of the year in S?o Tom? begins around May 25 and lasts for 6.0 months, ending around November 27.. The clearest month of the year in S?o Tom? is July, during which on average the sky is clear, mostly clear, ???



A typical checklist of some of the birding specials on display would include the Dohrn's thrush-babbler, S?o Tom? short-tail, several species of white-eyes, the S?o Tom? prinia, S?o Tom? fiscal shrike, maroon pigeon, Pr?ncipe thrush, S?o Tom? lemon dove, S?o Tom? olive pigeon, Pr?ncipe kingfisher, Pr?ncipe glossy starling, Pr?ncipe sunbird, velvet-mantled drongo ???



S?o Tom? and Pr?ncipe, [a] officially the Democratic Republic of S?o Tom? and Pr?ncipe, [b] is an island country in the Gulf of Guinea, off the western equatorial coast of Central Africa consists of two archipelagos around the two main islands of S?o Tom? and Pr?ncipe, about 150 km (93.21 mi) apart and about 250 and 225 km (155 and 140 mi) off the ???



The first phase of the program will include the installation of solar PV plants at the S?o Tom? international airport, as well as on the island of Pr?ncipe, with capacities of 1.1 kW and 300 kW, respectively. Cleanwatts" local partner Pleno Ambiente STP will undertake the installation, operation, and maintenance works.