

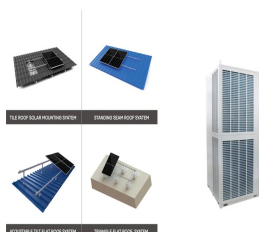
TWO-METER PHOTOVOLTAIC PANEL INSTALLATION



Installation: The physical installation of your solar panel system can vary in complexity, but it generally involves mounting the panels on your roof, installing an inverter, and setting up the connection to your home's electrical ???



While first generation (SMETS1) smart meters had their troubles with solar panel connection, the second generation smart meters (SMETS2) currently being rolled out by the UK government are fully compatible with solar panels. In addition to the cost of the solar battery itself, you will also need to factor in the installation. Solar battery



Factors affecting your solar panel installation cost. As you can probably tell, there's no easy answer as to exactly how much your solar panel installation will cost. Instead, your overall cost will depend on a number of factors. Here are the key ones: Type of panels. Solar PV panels consist of semi-conducting silicon-based cells covered in



72-cell solar panels that are 28 kilograms and measure 2.03 meters long by 1.01 meters wide have an area of 2.05 square meters. Therefore, they weigh 13.66 kilograms per square meter. Pounds per Foot. A 100-watt ???



Another type of solar power metering is called bidirectional metering. In this type of solar panel metering installation one meter is used and it takes the amount of kwh used by the customer and subtracts from it the amount of kwh generated ???

TWO-METER PHOTOVOLTAIC PANEL INSTALLATION



Dimensions: Larger panels, typically 2 meters in length and 1.1 meters in width. Weight: Between 20-30 kg. Usage: Intended for larger roof areas with fewer obstructions, Solar panel installation costs around \$7,000 upfront for a 3-4kW system, which is significant. However, the long-term savings on bills and earnings from selling excess



Big solar panel system: 1kW, 4kW, 5kW, 10kW system. These include several solar panels connected together in a system (2 ??? 50 solar panels). usually on my meter for 2 panels in series behind glass I'm making .4-.8 of a W & I have another set the same way inside I'm in Boston on average, you can install 17.25 W of solar panels per



Solar panel installation usually takes one to two days, but larger installations ??? over 14 panels ??? can take up to four days. Much of this time is taken up with constructing the scaffolding, so don't be concerned if it's been ???



Solar panel installations typically take about two days to complete; Get a certified solar panel installer to carry out the job; Solar panels can help reduce your monthly energy bills by 50% from day one, according to The Eco ???



Finding the Size and No. of Solar Panels. W Peak Capacity of Solar Panel = $1924 \text{ Wh} / 3.2 = 601.25 \text{ W Peak}$. Required No of Solar Panels = $601.25 / 120\text{W}$. No of Solar Panels = 5 Solar Panel Modules. This way, the 5 solar panels each of 120W will capable to power up our load requirements. Find the Rating and Size of Inverter

TWO-METER PHOTOVOLTAIC PANEL INSTALLATION



Solar panel installations typically take about two days to complete; Get a certified solar panel installer to carry out the job; Solar panels can help reduce your monthly energy bills by 50% from day one, according to ???



More and more households in the UK are turning towards solar panels for their energy production. Over 3,000 installations are being carried out each week according to trade association Solar Energy UK.. The solar panel installation process, however, remains relatively unknown. You might be wondering if you can take care of it yourself or if you'd be better to call in a professional.



In this guide, we'll explain a typical solar panel installation from start to finish, as well as what all the hardware does, and where on your property you can install the panels. If you're interested in how much you could save with a solar & battery system, click the button below, enter a few details, and we'll generate an estimate.



After solar panel installation, the system needs to be activated. This involves interconnecting the solar panels, installing the inverter, and commissioning the system. In traditional setups, utility companies install ???



Electricity use based on Ofgem typical domestic use values, taking a mid-point between profile class 1 (single-rate meter) and 2 (multi-rate meter) at the time of calculation. Solar panel installation costs. Quotes for solar panel installation typically include the cost of labour. More complex installations are costlier as they take longer

TWO-METER PHOTOVOLTAIC PANEL INSTALLATION



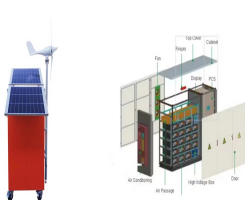
Solar panels are generally quite reliable. Many owners don't experience technical faults in over a decade of ownership. Nearly seven in 10 owners had had no problems with their solar panels in our survey of over ???



2.5.4 Cables in battery systems 30 2.5.5 PV String cable and fuse ratings 30 2.5.6 Battery selection and sizing 30 2.5.7 Battery installation/labelling 31 2.6 System performance 32 2.6.1 Inverter sizing 30 2.6.2 System performance 33 3.0 INSTALLATION/SITWORK 35 3.1 General 35 3.2 PV specific hazards 35 3.3 d.c. circuits - installation 36 3.3.1



Most roofs can easily manage 10kg per square meter, while the average weight load of a solar panel on a slanted roof is about 1.3kg per square meter (2.3kg per m2 on a flat roof). While they can weigh up to 18kg to 20kg, the force they exert per metre on a roof can be lower when installed with mounting.



By monitoring your solar production and usage, you can make adjustments to your energy usage and save money on your energy bills..
Types of Solar Panel Meters. There are two types of solar panel meters:
Analogue Meters: ???



Ground-mounted bifacial solar installations: Bifacial panels are well-suited for ground-mounted solar systems as they can capture sunlight reflected from the ground, increasing energy production. These systems allow for optimal tilt angles and heights, enhancing the albedo effect. The albedo effect refers to the reflection of sunlight from the ground back onto the rear ???

TWO-METER PHOTOVOLTAIC PANEL INSTALLATION



Finding an unshaded spot is best, but sometimes shading is unavoidable. Some solar panel systems can minimise the impact of shading using "optimisers". Solar optimisers help improve the overall performance of your solar panel system. So, if one panel is shaded, it doesn't impact how much electricity the other panels can generate.



The installation process of a smart meter could be a way to detect potential electrical or gas safety issues at home. The installers are professionally trained to make sure the highest safety standards are applied and maintained. Under the SEG, everyone who owns a solar panel system with at least a 5MW capacity is entitled. Your 5kW solar



Discover which solar panel sizes and dimensions are the most common in the UK, as well as which size is the best for your home. 0330 818 7480. Become a Partner. Menu. Solar Panels. Heat Pumps If you're unsure ???



Photovoltaic (PV) systems are one of the most important renewable energy sources worldwide. Learning the basics of solar panel wiring is one of the most important tools in your repertoire of skills for safety and practical reasons, after all, residential PV installations feature voltages of up to 600V.



Solar panel size per kilowatt and wattage calculations depend on PV panel efficiency, shading, and orientation. these dimensions are usually available in millimetres which can be easily converted to centimetres or ???

TWO-METER PHOTOVOLTAIC PANEL INSTALLATION



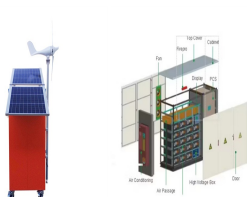
household uses 2,900kWh of electricity a year. This is the maximum power generated by a solar panel in ideal conditions. It's a standardised unit of measurement that makes it easier to compare different manufacturers and designs of solar panels. Installers will use kWp to estimate the performance of a solar system, and you can use it to



Solar panel batteries; Solar energy spare parts; Special offers; About Contact Account Articles | 01646 600151. 01646 600151. Calculate energy generated from PV systems 230v meters are easy to install, kWh linked to AC side of PV Wiring. Once this has been connected by approved installers the FIT tariff can



Having a suitable smart meter, however, can improve the advantages of your solar panel system, especially for tracking and SEG involvement. Q5: If I already have a smart meter installed, can I change suppliers? Indeed, particularly in the case of a SMETS 2 meters. Even changing vendors, SMETS 2 meters maintain their smart functionality. Conclusion

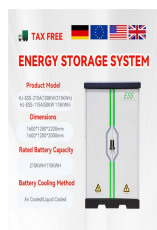


This step-by-step guide will provide you with all of the information necessary to successfully install a rooftop solar panel system. It will cover everything from planning and preparing your roof for installation to wiring up the electrical components safely and efficiently. Meters: track energy produced by PV system over time. Batteries



On the other hand, if you're connecting 42 x EcoFlow 400W rigid solar panels to 3 x DELTA Pro Ultra Inverters + Home Backup batteries, the diagram will be considerably more complicated.. For solar panel arrays with more than a few panels, you're going to need to take the particulars of your installation area into account to optimize performance.

TWO-METER PHOTOVOLTAIC PANEL INSTALLATION



A junction box is added between the utility meter and the main service panel. Then the wires from the utility meter, the main breaker panel, and the PV solar are connected in the junction box. An adequately sized PV service disconnect box must be used prior to making the connection between the junction box and the solar inverter.