

TYPICAL SIZE OF ENERGY STORAGE STATIONS



What is a battery energy storage system? A battery energy storage system (BESS) is an electrochemical device that charges (or collects energy) from the grid or a power plant and then discharges that energy at a later time to provide electricity or other grid services when needed.



What is energy storage system? Source: Korea Battery Industry Association 2017 ???Energy storage system technology and business model???. In this option, the storage system is owned, operated, and maintained by a third-party, which provides specific storage services according to a contractual arrangement.



How big is a battery storage system? Battery storage systems investigated ranged in size from 65???kWh/5???kW to 18MWh/3.6???MW (where the capacity of the line connecting the microgrid to the grid is 10???MW) , naturally depending on the size of the microgrid.



How many battery energy storage projects are there? The U.S. has 575 operational battery energy storage projects 8, using lead-acid, lithium-ion, nickel-based, sodium-based, and flow batteries 10. These projects totaled 15.9 GW of rated power in 2023 8, and have round-trip efficiencies between 60-95% 24.



What are the sizing criteria for a battery energy storage system? Battery energy storage system sizing criteria There are a range of performance indicators for determining the size of BESS, which can be used either individually or combined to optimise the system. Studies on sizing BESS in terms of optimisation criteria can be divided into three classifications: financial, technical and hybrid criteria.

TYPICAL SIZE OF ENERGY STORAGE STATIONS



How are grid applications sized based on power storage capacity? These other grid applications are sized according to power storage capacity (in MWh): renewable integration, peak shaving and load leveling, and microgrids. BESS = battery energy storage system, h = hour, Hz = hertz, MW = megawatt, MWh = megawatt-hour.



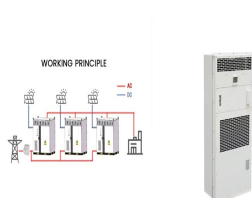
Overview Construction Safety Operating characteristics Market development and deployment See also



The levelised cost of storage in this context means the average difference between the purchase price of energy used to pump water to the upper reservoir (which is set by the external market and assumed to be \$40 MWh⁻¹ in this example calculation) and the required selling price of the energy from the storage. The required selling price is

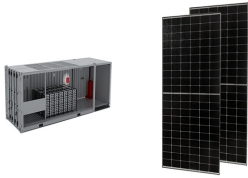


Energy Storage Context. In the past, energy storage at the electric grid-scale was mostly pumped hydro storage or compressed air energy storage in hundreds of mega-watt sizes. If a 100 MW hydro plant discharged energy for four hours, then it is referred to as 400 MWh plant. Mega-watt scale grid storage is changing to smaller size storage units



A coupled PV-energy storage-charging station (PV-ES-CS) is an efficient use form of local DC energy sources that can provide significant power restoration during recovery periods. and the typical scenarios are simulated, and the optimal results are obtained using the genetic algorithm in lower level. The population size is 1000 and the

TYPICAL SIZE OF ENERGY STORAGE STATIONS



The rapid scaling up of energy storage systems will be critical to address the hour???to???hour variability of wind and solar PV electricity generation on the grid, especially as their share of generation increases rapidly in the Net Zero Scenario. annual additions must pick up significantly, to an average of close to 120 GW per year over



Paper [9] investigates the change in the reliability of wind-solar stations with access to energy storage. In [10], the reliability of battery energy storage systems in wind farms is investigated by considering dynamic thermal effects. However, these studies only consider normal and fault two states of ES, which is not suitable for large-scale



Energy storage power stations can participate in auxiliary services for instance peak regulation and frequency modulation, reactive power compensation and power grid black start through energy charge and release according to the operation state of power grid. Download: Download full-size image; Fig. 6. Typical daily output of CSESS key



The average output power of the energy storage system can be expressed as: $(2) P_x = \frac{E_x}{T_x}$ where P_x is the average output power of energy storage system x ; E_x is the energy storage capacity of the energy storage system x ; T_x is the discharge time of energy storage system x .



Electric vehicles (EVs) play a major role in the energy system because they are clean and environmentally friendly and can use excess electricity from renewable sources. In order to meet the growing charging demand for EVs and overcome its negative impact on the power grid, new EV charging stations integrating photovoltaic (PV) and energy storage ???

TYPICAL SIZE OF ENERGY STORAGE STATIONS



When the energy storage station discharges at time t (i.e., $P_t < 0$) $E_t = E_{t-1} + P_t$ when the energy storage station charges at time t (i.e., $P_t > 0$) $E_t = E_{t-1} + P_t / \eta$ where E_t represents the power output of the energy storage power plant at time t (MWh); E_{t-1} is the power output at time $t-1$; P_t refers to the



2.1 Introduction to Safety Standards and Specifications for Electrochemical Energy Storage Power Stations. At present, the safety standards of the electrochemical energy storage system are shown in Table 1 addition, the Ministry of Emergency Management, the National Energy Administration, local governments and the State Grid Corporation have also ???



In order to minimize the peak load of electric vehicles (EVs) and enhance the resilience of fast EV charging stations, several sizing methods for deployment of the stationary energy storage system (ESS) have been proposed. However, methods for assessing the optimality of the obtained results and performance of the determined sizes under different ???



The battery energy storage station (BESS) is the current and typical means of smoothing wind- or solar-power generation fluctuations. Such BESS-based hybrid power systems require a suitable control strategy that can effectively regulate power output levels and battery state of charge (SOC). This paper presents the results of a wind/photovoltaic (PV)/BESS ???



Among all forms of energy storage, pumped storage is regarded as the most technically mature, and is suitable for large-scale development, serving as a green, low-carbon, clean, and flexible

TYPICAL SIZE OF ENERGY STORAGE STATIONS



3 ? Key Steps in Sizing a Battery Energy Storage System. To accurately size a BESS, consider factors like energy needs, power requirements, and intended applications. Here's a breakdown of each step. 1. Determine Your Energy Requirements (kWh) Understanding your total energy needs, measured in kilowatt-hours (kWh), is the foundation for sizing a



Recent years, the increasingly decrease of battery energy storage system (BESS) costs makes BESS-assisted fast-charge station economically feasible. Meanwhile, the implementation of BESS could help distribution network alleviate the strike from massive charging load. To ensure BESS-assisted fast-charging station attaining optimum economic benefit, BESS has to be optimally ???



When compared to the typical 400-V EV situation, the design of a DCFC station with energy storage must be considerably revised to be compatible with 800-V EVs . The research of various energy storage solutions shows that batteries will ???



SIZES OF HYDROELECTRIC POWER PLANTS. Hydropower facilities range in size from large power plants, which supply many consumers with electricity, to small and even "micro" plants, which are operated by individuals for their own energy needs or ???

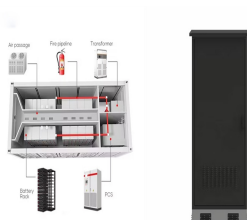


Renewable resources, including wind and solar energy, are investigated for their potential in powering these charging stations, with a simultaneous exploration of energy storage systems to

TYPICAL SIZE OF ENERGY STORAGE STATIONS



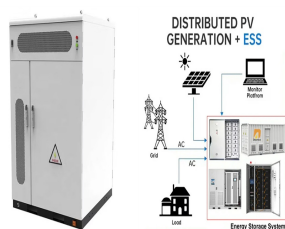
probability distribution to compute optimal energy storage size. Case studies are presented to Keywords- Plug-in Electric Vehicle Charging Station, Energy Storage Systems, Demand Charge Management, Stochastic Modelling, Markov Processes 2019). Note that a typical fast model (50 kW) can deliver enough charge for a 100 -mile trip with 30



Nanogrids are expected to play a significant role in managing the ever-increasing distributed renewable energy sources. If an off-grid nanogrid can supply fully-charged batteries to a battery swapping station (BSS) serving regional electric vehicles (EVs), it will help establish a structure for implementing renewable-energy-to-vehicle systems. A capacity planning problem ???



Therefore, the energy storage power stations are distributed according to the charge-discharge ratio (charging 1:2, discharging 2:1), and the charge-discharge power of each energy storage station can be adjusted in real time according to the charge-discharge capacity of each energy storage station, effectively avoiding the phenomenon of over



In this study, a CSP-T station with 2 x 50 MW capacity, dual-tank solar nitrate energy storage, and 12 h of energy storage time is selected. The CSP-T station was preset to be located in Dunhuang, Gansu Province, with a planned operational lifespan of 30 years.



The International Renewable Energy Agency (IRENA) forecasts that with current policies and targets, that in 2050, the global renewable energy share will reach 36%, with 3400 GWh of installed stationary energy storage ???

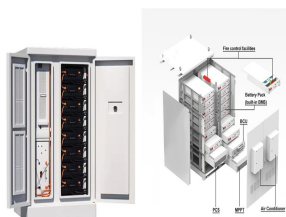
TYPICAL SIZE OF ENERGY STORAGE STATIONS



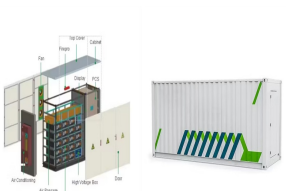
With the declining cost of energy storage technology, (1 megawatt = 1,000 kilowatts). A typical residential solar battery will be rated to provide around 5 kilowatts of power. It can store between 10 and 15 kilowatt-hours of usable energy, The size and functionality of utility-scale battery storage depend upon a couple of primary



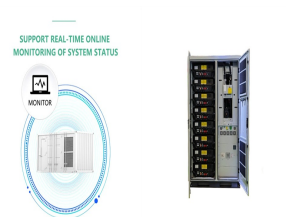
Long-established energy storage uses include gas stations (underground tanks store thousands of gallons of highly volatile fuel), propane storage and delivery businesses, ammonia storage and delivery businesses, and even grain elevators, which contain a vast and potentially volatile energy source (Donley 2023). but larger commercial or



on a brief analysis of the global and Chinese energy storage markets in terms of size and future development, the publication delves into the Committee operated a total of 472 electrochemical storage stations as of the end of 2022, with a total stored energy of 14.1GWh, a year-on-year increase of 127%. In 2022, 194



In the past few decades, electricity production depended on fossil fuels due to their reliability and efficiency [1]. Fossil fuels have many effects on the environment and directly affect the economy as their prices increase continuously due to their consumption which is assumed to double in 2050 and three times by 2100 [6] g. 1 shows the current global ???



Under net-zero objectives, the development of electric vehicle (EV) charging infrastructure on a densely populated island can be achieved by repurposing existing facilities, such as rooftops of wholesale stores and parking areas, into charging stations to accelerate transport electrification. For facility owners, this transformation could enable the showcasing of ???

TYPICAL SIZE OF ENERGY STORAGE STATIONS

TAX FREE



An energy storage project is a cluster of battery banks (or modules) that are connected to the electrical grid. These battery banks are roughly the same size as a shipping container. These are also called Battery Energy Storage Systems (BESS), or grid-scale/utility-scale energy storage or battery storage systems. Unlike a typical solar farm