

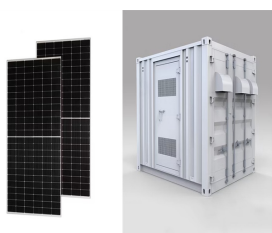
TÅ¼RKIYE BMU BATTERY



Where are Mutlu Batteries made? The majority of the vehicles manufactured in Turkey use Mutlu Battery products as their original battery. Batteries manufactured at the plants of Mutlu Battery, which has an annual manufacturing capacity of six million units, are exported to more than 80 countries on six continents.



Where does Mutlu battery meet customers? With a broad product range in the automotive and industrial groups, Mutlu Battery meets customers at its sales points across Turkey. As one of the largest battery manufacturers in Turkey, the Middle East and Eastern Europe, Mutlu Battery continues to represent Turkey in the best way possible in over 80 countries on six continents in global markets.



Who is Mutlu battery? Why Mutlu Battery? Tepeören Mahallesi, Eski Ankara Asfaltı Cad. No:21034959 Tuzla - İstanbul Mutlu Battery, the technology and export leader of the battery industry, is always with you wherever you are!



What is Mutlu flooded battery? The new technology developed by Mutlu is a flooded type battery designed from our experience to deliver innovation and quality performance for all cars and light commercial vehicles. For industrial applications, Mutlu uses the latest technology to manufacture a high range of stationary and tractionary batteries with various inner.



How many batteries does Mutlu battery produce a year? Mutlu Battery today has a production capacity of six million batteries per year, and it continues its operations in a place established on a land of 23 hectares, which is enhanced to world standards through the technology investments it made.

TÄ½RKIYE BMU BATTERY



What are Mutlu EFB batteries used for? With reinforced interior design and high charging levels, Mutlu EFB batteries are designed for longer cycle life for cleaning machines, electric vehicles, alarm and security systems, solar power systems, disabled chairs, elevators, pallet lifting equipment, golf carts, camper vans and UPS.



The cutting-edge SolaX Triple Power X-ESS 3.0kWH BMU Battery Management Unit boasts a wide range of functionalities. It not only prevents battery over-discharge but also holds an IP65 rating for versatile indoor and outdoor use. Furthermore, it enables remote fault diagnosis and supports multiple communication interfaces. With internationally recognized brand ???



Experience the ultimate in simplicity, reliability, and efficiency with X1-AC. Enjoy the benefits of natural cooling, quiet operation, and low maintenance, all while staying budget-friendly and maintaining high-quality performance. Achieve a ???

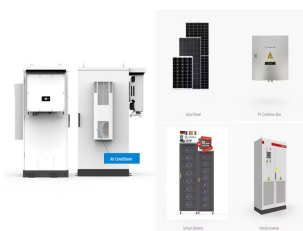


The battery energy storage system consists of the energy storage battery, the master controller unit (BAMS), the single battery management unit (BMU), and the battery pack end control and management unit (BCMU). 2. Internal communication of energy storage system. 2.1 Communication between energy storage BMS and EMS



BYD Battery-Box Premium LVL/LVS BMU. BMU (battery management unit) for use with BYD Battery-Box Premium LVL and LVS battery systems. Available in IP20 and IP55 versions. BYD-LVL/LVS-BMU normally for use with the BYD LVL which is IP20 rated.

T?RKIYE BMU BATTERY



SolaX triple power battery for solar system offers versatile forms, including standalone units, rack-mounted, and stackable options for scalable energy storage. It seamlessly integrates into low and high voltage setups.

Portugal Portuguese Romania Romanian Spain Spanish Sweden Swedish T?rkiye Turkish United Kingdom English. America



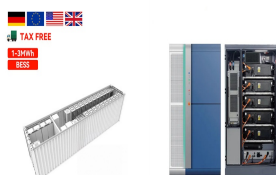
Zus?tzlich sind auch die Abmessungen zur?ckgegangen. ?ber eine BMU (Battery-Management-Unit) lassen sich bis zu 64 Batteriemodule zu einem System verschalteten. Die Gesamtkapazit?t kann so auf bis zu 983 kWh ???



Our stackable battery is designed to work alongside the GivEnergy 3-Phase Hybrid Inverter. High voltage BMS allows for greater charge and discharge power running at a lower current, providing higher efficiency than our lesser voltage range. Datasheet: Givenergy HV Battery Datasheet



The BMS controller includes two parts: the Battery Control Unit (BCU) and the Battery Monitoring Unit (BMU). In the BMS HiL system, a battery simulation device is used to emulate the vehicle battery pack, providing power to the BMU controller. Each battery cell can be independently controlled, facilitating battery balancing management.



Our stackable battery is designed to work alongside the GivEnergy 3-Phase Hybrid Inverter. High voltage BMS allows for greater charge and discharge power running at a lower current, providing higher efficiency than our lesser voltage range. Datasheet: Givenergy HV Battery Datasheet



The battery management unit (BMU) is the controlling part of the battery management system (BMS). It processes data from all other BMS modules, makes decisions to ensure the safety of the BMS, communicates with the VCU ???

TÄ¼RKIYE BMU BATTERY



8.7k,22,81??????????,bmu,? 1/4 ?sox? 1/4 ?????bmu ???



BMU (Batarya Kontrol ?nitesi) sayesinde kapasite ne kadar b?y?k olursa olsun t?m proje gerekliliklerini kar????layabilir. Minimum 15.4 kWh kapasiteye sahip mod?lden olu??ur ve 983 kWh kapasiteye kadar 64 adet paralel ba??lant???y?? ???



The BMU is a bridge between the CMUs and the vehicle communication bus. It controls the pre-charge and main contactors of the battery pack as well as collating the telemetry data from the nodes and providing a summary to other components on the vehicle CAN bus. BMU Specifications. Communications: CAN bus to both batteries and vehicle



(BMS)???BMU???BSU???????????? 1/4 (????????????????)???
 ????????? 1/4 ????????????????????????????? 1/2
 ????????????????????????????????? 3/4 ??????? BSU. ?????????????,?? 1/4
 ????????? 1/4
 ?????????????????????<?????????(R)????????????????????????<?????
 ????????? BMU ? 1/4 ?Battery Management Unit??(R)???

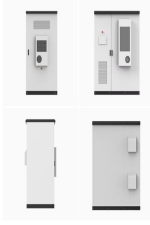


The BYD Battery-Box Premium LVL is a high capacity 48V lithium iron phosphate (LFP) battery for use with an external inverter. Thanks to its control and communication port (BMU), the Battery-Box Premium LVL scales to meet the project requirements, no matter how large they may be. Start with Battery-Box Premium LVL15.4



2 ? South African industrial company Metair has finalised the sale of its Turkish battery subsidiary Mutlu Ak. Operating in T?rkiye has become increasingly complex and challenging ???

T RKİYE BMU BATTERY



Bu ?l?eklenebilir tesiste 100 Ah, 280 Ah ve 314 Ah gibi ?e??itli lityum batarya h?creleri ?retilerek ?ncelikle T?rkiye ve uluslararası?? enerji depolama sistemi (ESS) pazarları?? hedeflenecek. 132.200 metrekarelik alana kurulacak tesiste Ar ???



This innovative SolaX Triple Power X-ESS 3.0kWh BMU Battery Management Unit is equipped with a multitude of features, including preventing the battery over-discharge, an IP65 rating for indoor and outdoor use, enabling remote fault diagnosis, and multiple communication interfaces. With internationally recognized brand devices, a long-life cycle, and safety certifications, the ???



This document is valid for the Battery-Box Premium LV BMU (Battery Management Unit) ("BMU") from firmware version 1.0. INTENDED USE BMU is applicable for the BYD Battery-Box Premium LV system(s) (LVS 3.8, LVS 7.7, LVS 11.5, LVS 15.4, LVS 19.2, LVS 23.0 and LVL 15.4) ("Battery-Box"), and works as a control unit for the



Or-Tec Battery. Email info@ortecaku .tr & ortecaku@gmail . Telefon 0342 503 00 70 bak??ms??z ve jel ak?lerin T?rkiye de bir ilk olan ?retimine 2019 y??l?? itibari ile Gaziantep" te ki fabrikas??nda ba??lam????t??r.?retime sadece bir model ile ba??layan Ortec Ak? kurulu??undan 1 y??l sonra ?retimi?? oldu??u model say??s??n?? 25



Thanks to its control and communication unit (BMU), the Battery-Box Premium LVL scales to meet the project requirements, no matter how large they may be. Start with BYD Battery-Box Premium LVL15.4 (15.36 kWh) and extend later to 983 kWh using parallel interconnection of up to 64 batteries. The BYD Battery-Box Premium LVL is compatible with 1

TÄRKİYE BMU BATTERY



The successor to the popular BYD Battery-Box Pro 13.8 now has 15.4 kWh and a weight reduction to 164 kg. In addition, the dimensions have also decreased. Up to 64 battery modules can be connected to form a system via a BMU (Battery ???



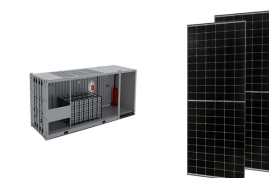
Mutlu Battery has a widespread sales network all over Turkey, with batteries for every vehicle and alternative energy solutions. The company always stands by its customers through its mobile service for vehicles of all brands and models in ???



This is the BMU for the new SolaX T-BAT-SYS-HV-S2.5/3.6 battery offering from SolaX Power. This BMU (Battery Management Unit) is for use with the TP-HS25 and TP-HS36 Battery Modules from SolaX Power. This product is for the BMU and Base ONLY ??? batteries are not included and must be purchased separately.



Our stackable battery is designed to work alongside the GivEnergy 3-Phase Hybrid Inverter. High voltage BMS allows for greater charge and discharge power running at a lower current, providing higher efficiency than our lesser voltage range. Datasheet: Givenergy HV Battery Datasheet



BMU? 1/4 ?Battery Management Unit? 1/4 ????????????????? 1/4
 ????????? 1/4 ??,???????????????????????????? 1/4
 ????????????????????????????????????? 3/4 ?????? ?????? 1/4 ??<?? 1/4
 ??<????????????????????????<????????????????????
 ??(R)?????????CMU? 1/4 ?Cell Management Unit? 1/4
 ???>??<????????? 1/4 ??,???????????????????????? 1/4
 ??????????BMS???????????????????? ???

TÄRKIYE BMU BATTERY



BMU (Battery Monitoring Unit) är ett effektivt verktyg för att övervaka dina batterier. Den kommunicerar trådlöst med både laddare och serviceverktyg. För mer information klicka här.

[product-brochure-battery-monitoring-unit.pdf](#). 2.12 MB. Andra dokument