

VELLFIRE ADDS ENERGY STORAGE BATTERY



What is the fuel efficiency of the Vellfire and Alphard? The Vellfire and Alphard have an impressive 17.2km/L of fuel efficiency. With innovations such as regenerative braking, the energy used as you drive is captured, transformed into electricity, and used to recharge the hybrid batteries.



What engine does a Toyota Vellfire have? Under the hood, the Vellfire is powered by a 2487 cc, Inline-4 cylinder, DOHC, Dual VVT-i, Toyota A25A-FXS Dynamic Force petrol engine. This engine is coupled with a Toyota Hybrid System and a 5-Ah nickel-metal hydride battery, delivering a combined power output of 247 horsepower and 240 Nm of torque.



What are Vellfire and Alphard Hybrid? The all-new Vellfire and Alphard Hybrid are luxury vehicles that combine opulence with sophistication. They feature sleek lines, a bold silhouette, and a formidable presence, as evident in their meticulously sculpted exteriors and front grilles.



What's so special about the Toyota Vellfire & Alphard? The Toyota Vellfire and Alphard stand out with unrivalled storage space, allowing you to bring all your desired items to your destinations without worry. Powered by the latest generation Toyota Hybrid System, they promise exceptional performance and smooth, quiet rides.



What is Vellfire? Design-wise, the Vellfire is a product of Makoto Esuga's creative vision, featuring a name derived from a combination of 'velvet' and 'fire', indicating its blend of smoothness and intensity.

VELLFIRE ADDS ENERGY STORAGE BATTERY



Why should I buy a Vellfire or Alphard? The Vellfire and Alphard offer a world of comfort and sophistication with features like effortless seat adjustment, fine-tuned air conditioning, and a soothing massage feature that melts away fatigue and stress. Enjoy these luxuries in all your journeys.



Lead acid batteries have been the traditional home battery storage technology for living off-grid with multiple days of storage, but have shorter lives and are costlier to use than lithium batteries. There is a wide ???



The analysis will be carried out through a joint innovation project with the startup BeePlanet, which specializes in the integration of energy storage systems reusing lithium-ion batteries from electric vehicles. STORAGE. Battery energy storage ???



Rounding out our top three whole-home backup batteries is the Savant Power Storage battery. Most homes need around 30 kWh for a day of whole-home backup, so we recommend investing in two of these 18.5 kWh ???



Battery Energy Storage Systems (BESS) have become a cornerstone technology in the pursuit of sustainable and efficient energy solutions. This detailed guide offers an extensive exploration of BESS, ???

VELLFIRE ADDS ENERGY STORAGE BATTERY



Looking for a high-quality replacement hybrid battery for your Toyota Vellfire Hybrid car? Look no further than this 244.8V 6.5Ah NIMH Hybrid Car Battery Replacement from Okacc. This ???



The EPRI Battery Energy Storage Roadmap is the product of a series of working group meetings attended by EPRI Member Advisors and staff to review and assess the relevance of gaps identified in 2020 and compile new ???



Battery Energy Storage Systems, or BESS, are rechargeable batteries that can store energy from different sources and discharge it when needed. BESS consist of one or more batteries and can be used to balance ???



ACP adds that increased energy storage deployment not only enhances reliability and affordability but also drives U.S. economic expansion, supporting growing industries like manufacturing and data centers. "Energy ???



Financing energy storage. While battery prices are coming down, it's still a significant investment. The best option is to pay for your battery upfront using your own savings. If you don't have the cash to do this, you could consider a ???

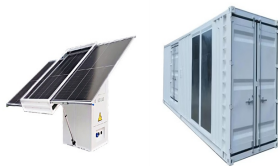
VELLFIRE ADDS ENERGY STORAGE BATTERY



Introducing the new replacement hybrid battery for Toyota Vellfire (2011-2015), a perfect alternative solution for drivers seeking a reliable hybrid battery replacement. This battery is built using brand new cells, passing rigorous ???



Under the hood, the Vellfire is powered by a 2487 cc, Inline-4 cylinder, DOHC, Dual VVT-i, Toyota A25A-FXS Dynamic Force petrol engine. This engine is coupled with a Toyota Hybrid System and a 5-Ah nickel-metal ???



Battery energy storage systems, or BESS, are a type of energy storage solution that can provide backup power for microgrids and assist in load leveling and grid support. There are many types of BESS available depending ???



Battery Storage. Prev: 2. On-grid, Off-grid and Hybrid Solar. Next: 4. Solar and Battery Calculator. Batteries for solar energy storage are evolving rapidly and becoming mainstream as the transition to renewable energy accelerates. Until ???



Things to consider about the Enphase 5P. The downside is, of course, lower capacity means less availability for power if the grid goes down. But, if you live in an area with a relatively stable grid that isn't prone to long ???

VELLFIRE ADDS ENERGY STORAGE BATTERY



infrastructure Battery energy storage in Texas. Utility-scale batteries emerge as key to stabilizing energy grid. November 2024 | By Nathan Gonzales. Revolution battery storage project in Crane County, Texas, is a large-scale battery energy ???



Battery storage. We also expect battery storage to set a record for annual capacity additions in 2024. We expect U.S. battery storage capacity to nearly double in 2024 as developers report plans to add 14.3 GW of battery ???