

VOLKSWAGEN GENERATOR OUTPUT



How does a VW generator work? You've got a problem. The electrical system on 6- and 12-volt VWs up to and including 1972 used a generator to produce power, a voltage regulator to set the charging level, and a battery to store the power. The voltage regulator is used to adjust the current flowing through the field windings (the stationary outer windings) of the generator.



Why does my Generator have 328 volts? Third 28 volts indicates a Voltage regulator problem. Your charging system should not exceed 14.4 to 14.6v max, otherwise your battery will be destroyed. Also generators are bad for not putting out full charge at lower rpm, that is one reason why manufacturers switched to alternators.



How many volts should a 6 volt generator run? The voltage should increase with rpm up to about 35 volts (20 volts or so for the 6-volt generator). If the generator passes this test, it's working okay. DON'T run this test any more than a few seconds -- just enough to make the test at increasing rpm, as this test will heat up the generator.



How do you test a 6 volt generator? Use a jumper lead to connect DF to the generator frame (grounding the DF connection). Now start the engine and test the voltage between D+ and the generator frame. The voltage should increase with rpm up to about 35 volts (20 volts or so for the 6-volt generator). If the generator passes this test, it's working okay.



What are the electrical contacts on a generator? The electrical contacts on the generator are D+ which is the main connection to the battery, and DF which is the connection to the field windings. The automobile battery is a lead acid battery, in which each cell produces just over two volts. A 6-volt battery has three cells, and a 12-volt battery has 6 cells.

VOLKSWAGEN GENERATOR OUTPUT



How do I know if my generator is good? The voltage should climb up to 14.2-14.5 volts and remain level there. If so, the alternator/generator and voltage regulator are good. If the voltage does not go up as the engine speed is increased, check to see that the generator brushes are not worn excessively.



Sie haben Ihr Volkswagen Modell mit den gewünschten Optionen zusammengestellt und die Konfigurationsdetails gespeichert? Dann können Sie mit dem dabei erzeugten Code hier Ihre Konfiguration aufrufen. Der Code ist dafür maximal drei Monate gültig. Kann Ihr Wunschfahrzeug durch zwischenzeitliche technische Änderungen nicht mehr produziert werden, wird auch der a?|



While this may not measure your generator's output directly, it will measure your energy consumption. Watt-hours and kilowatt-hours describe either energy storage or consumption over time. One watt-hour is the amount of energy to run an appliance at one watt for one hour. This is a useful measurement for battery storage or energy bills.



Understand the generator can only output a finite amount of power. That amount of power will be listed as watts. A generator may be listed as 3,000 watts delivering 120 volts. Step 2. Find the amperage that the generator can output at 120 volts. Wattage is equal to volts time amperage ($w = v \times a$). Divide wattage by volts to find the amperage (a



Volkswagen Bug w/ 1600 Dual Port "It's better to give than to receive. Especially advice." -Mark Twain: Back to top: TheAmazingDave Samba Member The only real drawback to the design is the fact that entire a?|

VOLKSWAGEN GENERATOR OUTPUT



Több mint 10 éve a Volkswagen használt alkatrész piacon, Golf és Polo alkatrészek. Szinkrod szerinti karosszeria elemek, ismert futasteljesitmenyA+-, garancialis alkatrészek. Volkswagen a?c Golf IV a?c Golf VI a?c Golf Plus a?c Golf VII. Volkswagen Passat 5,5 1,9 ptdi generator . 15 000 Ft/ darab.



The dash red light is directly tied to the generator D+ output, and is therefore a good indication that the generator has no output. I say USUALLY, because I recently had a friend's 356 stump me. His voltage regulator failed with the CutOff contacts open, and running for a 1000 miles or so, the generator had no load, and the commutator lost contact on the brushes.



output.) VW Beetle and Super Beetle 1967-79 VW Karmann Ghia 1967-74 VW Thing 73-74 VW Bus 67-71. VW Beetle. \$339.95. Add to Cart Part #: AL82N. Generators Generators Volkswagen Generator New 12 volt Bosch Generator. Generator rated at 30 amps. VW Beetle 1967-mid74 VW Super Beetle 71-73 VW Karmann Ghia 1967-74 VW Bus 1967-68 VW Thing 73-74



Generator kategoriaban keres kivalo markaju alkatreszeket VW POLO modellekhez? Generator POLO gepkocsijahoz a?? vasaroljon kockazatmentesen online Hatalmas valasztekkal varjuk, minden autoalkatreszt alacsony aron kinalunk, es reszletes mA+-szaki leirast adunk a termekkekhez.



Measured out at generator and getting only 4v now, ohmed out cables from generator to regulator and both are good and dont seem to be shorted. A forum community dedicated to aircooled Volkswagen owners and enthusiasts. Come join the discussion about performance, restorations, modifications, classifieds, troubleshooting, maintenance, and

VOLKSWAGEN GENERATOR OUTPUT



Több mint 10 éve a Volkswagen használt alkatrész piacon, Golf és Polo alkatrészek. Szinkod szerinti karosszeria elemek, ismert futasteljesitmenyA+-, garancialis alkatrészek. Volkswagen a?c Golf IV a?c Golf VI a?c Golf Plus a?c Golf VII.



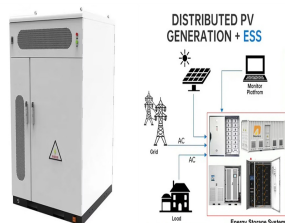
Incidentally, VW did not add "dedicated ground wires" to the system until model year 1969. At that point, the brown wire from the generator body to the regulator housing was added, but the frame of the body carried that on 1967-1968.



The maximum voltage output of a generator is an essential factor to consider when choosing the right unit for your needs. It refers to the highest level of voltage that a generator can produce under any operating a?|



So, normally, generators either give a 120 (110-120) or 240 volts output. However, if it's a dual voltage generator, it can provide both the 120 and 240V output. The accepted formula for voltage output is Volts = Watts / a?|



Looking for a wiring diagram for your VW generator? Check out our comprehensive guide on VW generator wiring diagrams, with step-by-step instructions and diagrams to help you troubleshoot and repair your generator a?|



When the generator output is low, the circuit breaker is one of the most important items to check. The circuit breaker is installed to protect your equipment. It shuts down the generator immediately if the voltage is too high. When the circuit breaker trips or breaks, it reduces the power supply

VOLKSWAGEN GENERATOR OUTPUT

unnecessarily. This outcome stems from inadequate

VOLKSWAGEN GENERATOR OUTPUT



The Volkswagen (VW) generator wiring diagram is an essential resource for troubleshooting and understanding the electrical system of a VW vehicle. The generator is responsible for producing electrical power to charge the battery a?|



generator had an output of 14V, 30 Amps when used in the Volkswagen however since I have totally enclosed the generator and the ventilation is reduced the current output is somewhat less but much better than the original generator in my MG. There is also a 6V Volkswagen (Bosch) generator which I have modified in a similar manner for an M type MG.



The generator size and capacity, often quantified in terms of wattage (watts or kilowatts) or amperage (amps), are critical factors in determining how much electrical output it can provide. Generator's output must align with the demand it aims to servea??for instance, a small portable generator might be rated for 2,000 watts, suitable for



I had brought the car down to one of the local vw mechanics and he tested the generator with a voltage meter and it showed that it was putting out 28 Volts? when reved. does the generator need to be polarized period or does it increase the output of voltage?



I had brought the car down to one of the local vw mechanics and he tested the generator with a voltage meter and it showed that it was putting out 28 Volts? when reved. does the generator need to be polarized period or a?|



6-volt generator output question. Thread starter fiveriversguide; Start date Jun 3, 2016; fiveriversguide Bigger Hammer. Nov 27, 2014 80 Cottage Grove, OR First Name dean Willys Model. Pickup; Willys Year: 1952; Jun 3, 2016 #1 I'm still struggling a bit with my 6-volt recharging system. I

VOLKSWAGEN GENERATOR OUTPUT

couldn't keep the battery charged and tried to use my

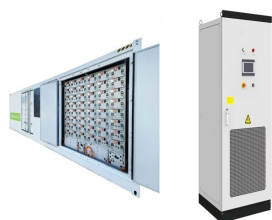
VOLKSWAGEN GENERATOR OUTPUT



New Bosch 12 Volt voltage regulator for VW Beetle, Ghia, and Bus. Generator output is over 14 volts, and regulators charge the battery when it needs it, and more importantly doesn't when it's fully charged! Overcharging will overheat and destroy your battery! Volume 10: The newest addition to the Volkswagen Bug-Me-Video collection might



How to Check Portable Generator Output? To check the output of a portable generator, follow these steps: Load Connection: Start by ensuring all appliances and devices are disconnected from the generator. Multimeter Setup: Set a multimeter to measure voltage (V) in the AC range that matches the generator's output (usually 120V or 240V).



If you spin the engine faster the voltage should go up between 13.5V and 14.5V (max). If so the generator is working ok as well as the regulator. If the voltage does not increase when the engine is running or sped up, remove the D+ and DF terminal wires. Jumper the DF terminal on the generator to the generator housing ground.



Is there a way to adjust a 6 volt generator to get a little more voltage out of it. I have a brand new Bosch starter and if I don't get the perfect voltage out of my good 6 volt battery it won't start. I have heard there is something you can connect which bumps up the output of the generator a little bit. Thanks in advance!