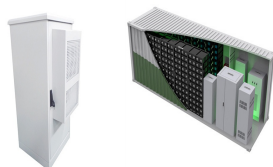
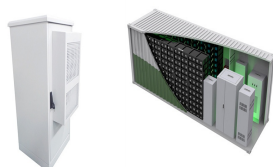


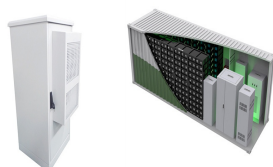
VOLTAGE OF PHOTOVOLTAIC PANELS CONNECTED IN SERIES AND THEN IN PARALLEL



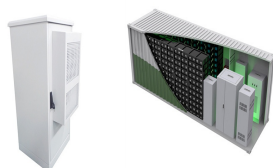
What is the difference between connecting solar panels in series vs parallel? Connecting your solar panel in series vs parallel affects current flow and is dictated by your installation's setup. Warning: Science below! While we're not going to get too deep into the details, the difference between connecting solar panels in series vs in parallel is an intermediate level solar discussion.



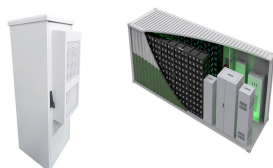
Does connecting solar panels in parallel affect wattage? No. Connecting solar panels in serial or parallel does not impact how much wattage they produce in laboratory conditions. Connecting solar panels in parallel increases amperage and keeps voltage constant. Series connections produce higher voltage while maintaining amperage, regardless of how many panels you use.



How to connect solar panels in parallel? In order to connect solar panels in parallel, you will have to connect the positive (+) terminals of all the solar panels together and the negative (-) terminals together. The total voltage of the solar panel array will be the same as that of a single solar panel, while the current will be the sum of the currents of each solar panel.

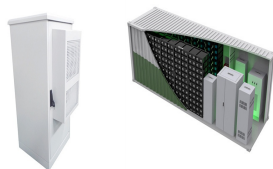


How to calculate solar panels connected in parallel configuration? The following figure shows solar panels connected in parallel configuration. If the current I_{M1} is the maximum power point current of one module and I_{M2} is the maximum power point current of other module then the total current of the parallel-connected module will be $I_{M1} + I_{M2}$.

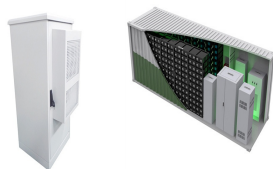


What happens when you connect solar panels in series? When you connect solar panels in series, you connect the positive (+) terminal of one solar panel to the negative (-) terminal of another solar panel. The total voltage of the array will be the sum of the voltages of each solar panel, while the current will be the same as that of the solar panel having the lowest current specifications.

VOLTAGE OF PHOTOVOLTAIC PANELS CONNECTED IN SERIES AND THEN IN PARALLEL



Can solar cells be arranged in parallel? Solar cells can also be arranged in parallel, where each solar panel is connected to every other panel in the circuit. Unlike connecting in series, connecting in parallel allows the voltage to stay the same, but the current adds up. In fact, it's the exact opposite of connecting in series!



For the same, if you have solar panel 4, carry on the connection from panel 3 to panel 4 and then connect it with the controller. This is how to connect 3 solar panels in parallel or 4 panels. This should have taught you about how do you wire 3 solar panels in parallel and how to connect 4 solar panels in parallel.



Higher current output: Parallel connection increases the current output of the solar panel system. This is beneficial if you have a high-power load that requires a lot of current. If one solar panel fails, the other solar panels will still work: If one solar panel in a parallel connection fails, the other solar panels will still work.



Using the same three 6 volt, 3.0 amp panels from above, we can see that when these pv panels are connected together in series, the array will produce an output voltage of 18 Volts ($6 + 6 + 6$) at 3.0 Amperes, giving 54 Watts (volts x amps) at full sun. Connecting solar panels in parallel with different voltage ratings is not recommended as



So, in my example you could lose 1/3 of the voltage of one panel and then you would be better off with the two panels being connected in series. The application I'm interested in is a narrowboat where the panels regularly experience unequal light levels.

VOLTAGE OF PHOTOVOLTAIC PANELS CONNECTED IN SERIES AND THEN IN PARALLEL



Connect the 2 positive solar panel cables to the compatible Y connector. This will likely be the FFM connector. (FFM stands for "female, female, male," meaning the Y connector with 2 female MC4 connectors and 1 male MC4 connector.) Then connect the 2 negative solar panel cables to the other Y connector. This will likely be the MMF connector.



Series vs. Parallel Connections: A Comparison. Series Connections:.. How It Works: In a series connection, solar panels are connected end-to-end, with the positive terminal of one panel connected to the negative terminal of the next.; Voltage and Current:.. Voltage: The voltages of each panel add up, while the current remains the same as that of a single panel.



When you connect solar panels in parallel, you connect the positive (+) terminals of all the solar panels together and the negative (-) terminals together. The total voltage of the array will be the same as that of a single ???



How Connecting Solar Panels in Series Vs Parallel Differs? Connecting PV panels in series increases the voltage but amps remain the same, but in parallel connection, current and power output increase. For connecting ???



The PWM charge controller will decrease the solar panel operating voltage to a desirable level to charge the battery bank and it will not adjust the operating current of the solar panel. there is no preference for solar panels to be connected in series, parallel, or series-parallel only if the voltage value of the solar panel system is

VOLTAGE OF PHOTOVOLTAIC PANELS CONNECTED IN SERIES AND THEN IN PARALLEL



The following are the formulas which can be used to calculate the total voltage and current for solar panels connected in series and parallel:
Formula for Calculating Solar panels connected in series: Total Voltage = $V_1 + V_2 + V_3 + ??? + V_n$, where V_1 , V_2 , V_3 , $???$ V_n are the voltages of each solar panel. Total Current = I_{min} , where I_{min} is the



If you connect these four panels in parallel, all of them must have the same voltage, and therefore, will generate at the maximum possible voltage for one of the panels, which means 9V. $P_{tot} = P_1 + P_2 + P_3 + P_4 = 9V ???$



The current is summed when connecting solar panels in parallel, but the voltage remains unchanged. Next, let's look at the features of connecting solar panels in series vs. parallel. How To Wire Solar Panels in Series and How It Affects ???



When solar panels are connected in parallel (known as arrays) they all share the same voltage, and the current that each one of them provides is summed up. The main advantage of this configuration is reliability.



For example, there are 3 panels for the connection, two panels are 12V and one panel is 24V, you can link 12V together in series and go for a parallel connection to the 24V panel. Note: Be careful with wiring, take proper ???

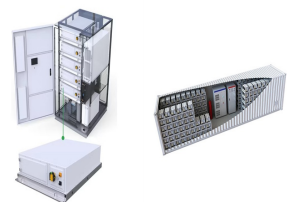
VOLTAGE OF PHOTOVOLTAIC PANELS CONNECTED IN SERIES AND THEN IN PARALLEL



Series wiring increases the sum output voltage of a solar panel array but keeps amperage the same. Parallel wiring increases the sum output amperage of a solar panel array while maintaining the same voltage. The ???



Series Solar Panel Wiring . In series solar panel wiring, the solar panels are connected in a row, one after the other. The voltage of each panel is additive, so if one panel produces a voltage of 12 volts (V), and another produces 24 V, ???



When solar panels are connected in series, the positive terminal of one panel is connected to the negative terminal of the next panel, and so on. This creates a single pathway for the current to flow through all the ???



Electrical current, voltage, and power in solar panel systems 101. Whether your solar panels are connected in series or in parallel, there are three fundamental concepts to understand about electricity before you get started. These are electrical current, voltage, and power. We'll use all three frequently in this article, so DIY solar newbies should read this section.

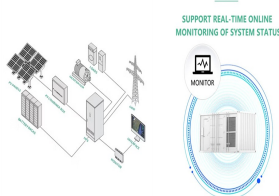


To wire your solar panels in parallel, connect all the positive terminals together then connect all the negative terminals together (using branch connectors or a combiner box). This means that the voltage of your solar panel array will not reach charging voltage until much later in the day compared to series wiring, and it will drop back

VOLTAGE OF PHOTOVOLTAIC PANELS CONNECTED IN SERIES AND THEN IN PARALLEL



E.g. 3x12V panels connected in parallel with Y branch connectors, the voltage stay at 12V, and the amps will be $3 \times 6A = 18A$. Series-parallel Connection. When connecting panels in series-parallel, the panels wired together in series to form strings of panels. Then, the multiple strings of series-connected panels are connected to each other in parallel.



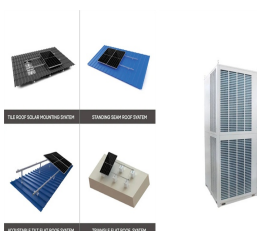
Further, PV modules are also connected in both series and parallel to have the maximum power production at same current/voltage as per requirement; then it is referred as array. Solar panel is a group of several modules connected in series???parallel combination in a frame that can be mounted as roof structure of greenhouse, then the whole



The following solar panel and battery wiring diagram shows how to wire a four 12V Solar Panels in series-parallel connection to a 24V, 400Ah battery with an automatic inverter system. Note that the number of solar panels and batteries depends on the system's design and load requirements i.e. multiple batteries and solar panels can be connected in series, parallel or series parallel



You typically put the most panels you can together in series (called a string); but not so many you exceed the voltage. You repeat that for as many panels as you have and then connect the strings together in parallel. For example, if you had 6 panels with $V_{mpp} = 22.5$, $I_{mpp} = 5.75$ and an MPPT with 60 volts and 20 amps max; then you might arrange



There are no surprises for figuring out what wiring solar panels in a combination of series and parallel means. Taking the same 4 x 100 watt panels, you'd wire a pair in one string (i.e. in series), the 2nd pair in another string, then wire the two strings in parallel.

VOLTAGE OF PHOTOVOLTAIC PANELS CONNECTED IN SERIES AND THEN IN PARALLEL



Connecting Different Spec Solar Panels in Parallel. Mixing panels with different currents but equal voltages can work well when wiring them in parallel. When connected in parallel, the current of each panel is summed ???



Discover the best way to harness solar energy for your needs with our guide on solar panel series and parallel connection setups. Optimize your power output today! Fenice Energy Fenice Energy points out that how you ???



Solar panels connected in series are ideal in applications with low-amperage and high voltage and power requirements. The total power of solar panels connected in series is the summation of the maximum power of the ???



Solar Panel Calculator is an online tool used in electrical engineering to estimate the total power output, solar system output voltage and current when the number of solar panel units connected in series or parallel, panel efficiency, total area ???



This is because wiring in series results in the system voltage being the addition of the voltage from each panel: $48.6V + 48.6V + 48.6V = 145.8V$ would be the resulting system open circuit voltage for the three panels. Wiring in Parallel . The next method of wiring solar panels is in parallel.

VOLTAGE OF PHOTOVOLTAIC PANELS CONNECTED IN SERIES AND THEN IN PARALLEL



When we connect N-number of solar cells in series then we get two terminals and the voltage across these two terminals is the sum of the voltages of the cells connected in series. For example, if the of a single cell is 0.3 V and 10 such cells are connected in series than the total voltage across the string will be $0.3 \text{ V} \times 10 = 3 \text{ Volts}$.



The open ends of this string then connect to your charge controller or your inverter if it has a built-in charge controller. This doubles the amperage to 20 amps while keeping the voltage at 75V. This combination of series and parallel wiring fits perfectly within the inverter's specs, as it keeps both the voltage and amperage at safe



Series wiring increases the sum output voltage of a solar panel array but keeps the amperage the same; Parallel wiring increases the sum output amperage of a solar panel array while keeping the voltage the same. The ???



Once your solar panel array is connected in series or parallel, you have one final connection to make. of voltage drop. The reason is that the voltage is relatively low, to begin with, since the amperage increases, not the voltage, as you connect panels in parallel. Therefore, if conditions aren't ideal, like in a low irradiance situation