

# WALL ROOF PHOTOVOLTAIC PANEL SUPPORT



Can solar panels be mounted on a roof? Naked have seen it all before and can help you find the perfect Solar mounting system to get your solar panels where you want them. We???ve all seen Solar PV panels mounted on people???s roofs and on the roofs of businesses, so here???s a rundown of the options to get them up there. By far the most common method for fixing Solar PV panels to a roof.



What is a whole roof solar system? Whole roof solar systems mean that your Solar PV panels become the fabric of your roof, serving two purposes, weather proofing and energy supply. The Solar PV panel frames are bespoke for the mounting system so there is a limited choice of panels with these set ups. Luckily there are still good quality panels to choose from.



What is a PV panel bracket? PV panel bracket is a mounting system used to secure and support PV panels in place. It is an essential component of any solar power system, as it provides the structural support needed to ensure the panels are installed correctly and can withstand various environmental conditions.



What types of solar panel mounting systems are available? The manufacturers we provide are designed to offer reliable solar panel mounting structures for residential, commercial, and utility-scale projects. There are solutions available for flat roofs, pitched roofs, ground mounted and roof flashings. Solar mounting systems provide the structural support needed to sustain solar panels.



Can solar panels be installed on a flat roof? Flat roof solar panel mounting systems require a specific approach. To install solar PV on south facing flat roof we would use a ballasted system. This means the roof is not penetrated (which would let in water on a flat roof), and the system is unable to be lifted or tipped over by the wind.

# WALL ROOF PHOTOVOLTAIC PANEL SUPPORT



What are photovoltaic brackets for glazed tile roofs? Photovoltaic brackets for glazed tile roofs provide a secure and aesthetically pleasing solution for mounting solar panels on tile roof surfaces. These brackets are designed to blend in with the roof tiles, preserving the aesthetic appearance of the building while providing reliable support for the panels.



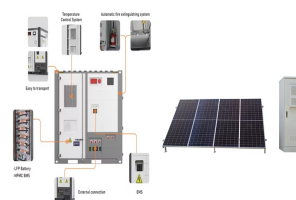
Direct fixing to the roof structure with a calculable pull out value, enabling accurate design of fixing layouts. Fixing points are all underneath the membrane. Where approved, roofing system warrantee covers the IFP Provides simple to use universally accepted M10 anchor points Solar Panel Support Post by Latchways



Solar panel building regulations. Solar panel installations have to pass standard building regulations for the property - it's a legal requirement for many home improvements.. The key areas are structural safety of a building (Part A) and ???



It is important to know what type of solar panel mounting system is the best for you. This saves costs that otherwise would rise higher due to the aluminum or steel structures needed to support ground mounted panels. Solar panel installation suitable for sloped roof. Most houses have a sloped roof design. Now that you have a good idea



Aluminium Adjustable Triangle Support Fame - 850mm. Engineered to the highest of standards in anodised aluminium. Designed for the mounting of PV solar panels. Suitable for ground, flat roof and wall mounted applications. Sold ???

# WALL ROOF PHOTOVOLTAIC PANEL SUPPORT



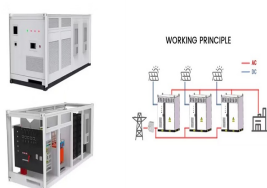
A Wall. A wall-mounted solar panel may be your best option, especially if you opt for a smaller panel like a 100W rigid solar panel. If you have a wall that receives significant direct sunlight during the day, wall mounting may be a good option and can augment a rooftop PV array. How to Mount Solar Panels Yourself



2. Materials Used in Solar Panel Mounting Hardware. The durability and resilience of solar panel mounts depend heavily on the materials used in their construction. This section explores the standard materials and their properties that make them suitable for solar panel mounting applications. Aluminum: Durable and Lightweight



Available since 2014, JoriSolar Opti"Roof is an integration system for photovoltaic modules designed for fitting modules as part of a landscape installation. It is suitable for the JI 45-333-1000 drywall roof profile, as well as our JI Roof PIR ???



Solar Panel mounting solutions designed for a neat and easy installation. Either bolt through brackets or use with bonding agent if using on a motorhome or caravan roof for example. High quality parts that are all tried and tested over many years.



Because we know, every minute counts on large commercial and industrial roofs. This also applies to planning: Here, we cover the entire project cycle; with interfaces that are unique in the market. We are there: In all project phases, we ensure absolute top support for PV planners.

# WALL ROOF PHOTOVOLTAIC PANEL SUPPORT



Solstex panels deliver significantly more energy than other PV panels, at up to 17.6 W/sq. ft. A pressure-equalized Rear Ventilated Rainscreen system for exterior or interior wall panel used in new construction or renovation, commercial and other applications. Typical uses include: exterior wall panels. Non-load bearing use only.



Here the rails are secured to the ridges of a metal roof using self-tapping screws. The base of the rails has a waterproof membrane to ensure a secure weather seal. The Solar PV panels are then clamped to the rails, keeping the panels very close to the roof to minimize wind loading. ?63+VAT/panel.



PV panels mounted on roof Workers install residential rooftop solar panels. The solar array of a PV system can be mounted on rooftops, generally with a few inches gap and parallel to the surface of the roof. If the rooftop is horizontal, the array is mounted with each panel aligned at an angle. If the panels are planned to be mounted before the construction of the roof, the roof can ???



Wall-mounted solar panel systems are easier to maintain than roof or ground-mounted solar panels in terms of cleaning. Build-up of debris, snow, and more are almost never an issue since rain washes any dirt away, and gravity keeps leaves and more from piling up. allowing more direct sunlight to hit wall-mounted panel angles. Roof and ground



, Solar Electric Supply has supplied the finest solar panel mounts from reputable manufacturers. Whether a solar roof mount, ground mount, top of pole mount, side of pole mount, tower mount or solar carport, we can accommodate your requirements. We carry a wide selection of solar panel mounting options to review for your specific solar panel power project.

# WALL ROOF PHOTOVOLTAIC PANEL SUPPORT



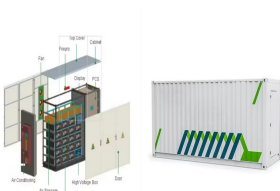
Effect of wind lift on solar PV panels & roof supports ; Depth of wall chases; Sizes of holes and notches used for cables; Use of certified and correctly applied materials and equipment ; Approved Document B1 - Fire Safety (Domestic) Approved Document B2 - Fire Safety . PV installations in relation to fire risk e.g short circuits, overloaded



A sturdy solar platform will support, shield, and stabilize solar panels, allowing them to make the most of the available sunlight without damage or impairment. Step 5: Arrange the Solar Rooftop Panels. Roof-mount solar panel installations are less intrusive and invasive, and there is no need for extensive pre- and post-installation work or



Streamline your operations and provide greater support to your entire crew. in situations where photovoltaic rack mounting systems penetrate roof covering systems. These products are intended to be installed in accordance with either the International Building Code (IBC) or the International Residential Code (IRC), and the installation



Photovoltaic brackets for glazed tile roofs provide a secure and aesthetically pleasing solution for mounting solar panels on tile roof surfaces. These brackets are designed to blend in with the roof tiles, preserving the aesthetic ???



No solar panel is included. Suitable for solar panel widths of up to 60 cm. For example, use with any SunWorks rigid framed solar panel up to our 100 watt Premium panel. For larger solar panels, take a look at the large adjustable ???

# WALL ROOF PHOTOVOLTAIC PANEL SUPPORT

114KWh ESS



Aluminium Adjustable Triangle Support Fame - 850mm. Engineered to the highest of standards in anodised aluminium. Designed for the mounting of PV solar panels itable for ground, flat roof and wall mounted applications.Sold as a singular item. For standard installs you will require a minimum of two triangular support frames.



Mounting Harnessing the Sun: Detailed Guide to Installing Solar Panels on a Wall. Installation Tips, Advantages of Vertical Mount and More Home solar energy system owners have traditionally focused on installing panels on rooftops. However, wall mounting offers an alternative for properties with unsuitable roofs due to structural issues or shading. This guide ????

APPLICATION SCENARIOS



Mount the fuse box and charge controller on the support wall, then connect them. Install the inverter on the support wall. Connect it to the fuse box and charge the controller to complete the electrical setup. Step 2: Work on the solar panel connections. Secure at least two parallel solar panel support rails onto the shed roof.



Aluminium Adjustable Triangle Support Fame engineered to the highest of standards. Designed for the mounting of PV solar panels. Suitable for ground, flat roof and wall mounted applications. Sold as a singular item. For standard ????



Solar Panel Mounting Bracket Aluminum Solar Panel Z Brackets Roof Solar Panel Bracket for RV, Boat, Wall, Caravans, Yacht and Other Off Gird Installation, Set of 4 Units, Black. Ground Flat Surface DIY Off-Grid Solar Panel Rack System, Support Up To 300 Watt Solar Panel,XL.

# WALL ROOF PHOTOVOLTAIC PANEL SUPPORT



PV Panel Mounting Brackets. PV panel mounting brackets secure , ensuring stability and optimal performance. Brackets are fixed in a way that the solar panels are exposed to an outer ???



The holes in premium-quality, universal solar panel supports may be changed according to angles, resulting in the required output. If there is insufficient space on the roof, it is recommended to choose a wall-mounted stand. On the other hand, if there is enough space on the roof, then it is best to make sure the solar panel is placed in an