

# WALLIS AND FUTUNA AURORA S GRID



Where are Wallis and Futuna islands located? Wallis and Futuna is a country comprising two groups of islands, located about 240 kilometres apart in the central Pacific. The Wallis group consists of the main island of Wallis (Uvea) and over 20 surrounding motu (small islands on the barrier reef). The highest point of Uvea is only 145 metres above sea level.



Is uvea the same as Futuna? The island of Uvea takes its European name, Wallis, from its 18th-century British discoverer, Capt. Samuel Wallis, but the indigenous name is of much greater antiquity. Uvea and Futuna are sometimes confused with islands of the same or similar names elsewhere. Uvea is sometimes confused with Ouv'a in the Loyalty Islands of New Caledonia.



Why are Uvea and Futuna Islands a poor place to live? The soils of Uvea and Futuna islands are of limited fertility, and a number of factors restrict agricultural production. Only about one-fourth of the available land is suitable for cultivation. The system of land tenure, which is based on customary ownership by kin groups, has resulted in a fragmentation of land parcels.



Where did Futuna come from? Futuna has a namesake among the islands of Vanuatu (formerly the New Hebrides), and folklore suggests that both the Futuna in Vanuatu and the Stewart Islands (Sikaiana) in the Solomon Islands were settled from Futuna in the pre-European era. Total land area 54 square miles (140 square km). Pop. (2018) 11,558.



What is the difference between Futuna and Alofi? Futuna lies a little over 125 miles (200 km) to the southwest, and it has a smaller neighbour, Alofi. Both are volcanic islands. Futuna has an area of 18 square miles (46 square km), and its volcanic peaks rise to 2,493 feet (760 metres). Alofi's land area is 7 square miles (18 square km), and its highest elevation is about 1,198 feet (365 metres).

# WALLIS AND FUTUNA AURORA S GRID



Who were the indigenous people of Uvea & Futuna? Fish and other marine fauna provide the bulk of dietary protein. The indigenous people are Polynesians, but there are significant differences between the languages and peoples of Uvea and Futuna islands. It appears that Uvea was settled by at least 800 BCE, and the people were subsequently conquered by Tongans.



5 ? Wallis and Futuna, self-governing overseas collectivity of France consisting of two island groups in the west-central Pacific Ocean. The collectivity is geographically part of ???



Overview History Governance and law Geography and climate Economy Demographics Culture Transport and communications



Discover the uncharted beauty of Wallis and Futuna Islands with Opulent Routes. Your gateway to pristine Pacific paradise awaits! +91 98 100 30 233. Wallis and Futuna Islands. Oceania, ???



? 1/4 ?? 1/4 ?Wallis et Futuna? 1/4  
 ?,,,,,,,,,,,,,,264,,,,,,,,,1.5,,,,,8000,,1961?  
 1/4 ?territoire d'outre-mer? 1/4 ,,,,,,2003? 1/4 ?collectivit? ,,,?

# WALLIS AND FUTUNA AURORA S GRID



? 1/4 ?? 1/4 ?Wallis et Futuna? 1/4 ?,?????????? ???



Futuna ist eine 46 km<sup>2</sup> grosse, nord<sup>östlich</sup> von Fidschi im S<sup>üd</sup>pazifik gelegene Insel vulkanischen Ursprungs, die zum franz<sup>ösischen</sup> <sup>Ö</sup>bersee-Territorium Wallis und Futuna geh<sup>ört</sup>. Uvea Foto: ???



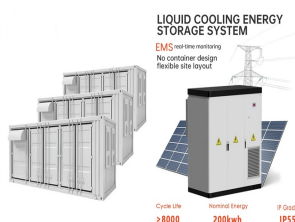
, Wallis and Futuna was a French protectorate, then a colony administer This is an overview of Futuna island or a travel guide the French Islands. Before 1961, Wallis and ???



Both Wallis and Futuna (Horn) Islands are part of French Polynesia (q.v.). The Wallis Islands lie between 13<sup>°</sup>12' and 13<sup>°</sup>24' and 176<sup>°</sup>6' and 176<sup>°</sup>14'W in the southern Pacific Ocean about 350 ???



Carte de Wallis-et-Futuna. Wallis-et-Futuna est situ<sup>é</sup> dans l'oc<sup>éan</sup> Pacifique, en Oc<sup>éanie</sup>, dans l'aire culturelle de la Polyn<sup>ésie</sup>. Cette collectivité d'outre-mer fran<sup>çaise</sup> a des fronti<sup>ères</sup> avec ???



? 1/4 ?Wallis and Futuna Islands? 1/4 ?,???,274???