

WATER IN ENERGY STORAGE POWER STATION



How does a hydroelectric energy storage system work? This method stores energy in the form of water, pumped from a lower elevation reservoir to a higher elevation. In pumped hydroelectric energy storage systems, water is pumped to a higher elevation and then released and gravity-fed through a turbine that generates electricity.



How does a pumped storage hydropower system store electrical energy? Pumped storage hydropower systems store excess electrical energy by harnessing the potential energy stored in water. Fig. 1.3 depicts PSH, in which surplus energy is used to move water from a lower reservoir to a higher reservoir.



What is a pumped storage hydropower facility? Pumped storage hydropower facilities use water and gravity to create and store renewable energy. Learn more about this energy storage technology and how it can help support the 100% clean energy grid the country???and the world???needs.



Can electricity be stored through pumped-storage hydroelectricity? Omid Palizban, Kimmo Kauhaniemi, in Journal of Energy Storage, 2016 Electrical energy may be stored through pumped-storage hydroelectricity, in which large amounts of water are pumped to an upper level, to be reconverted to electrical energy using a generator and turbine when there is a shortage of electricity.



How much energy is stored in pumped storage reservoirs? A bottom up analysis of energy stored in the world???s pumped storage reservoirs using IHA???s stations database estimates total storage to be up to 9,000 GWh. PSH operations and technology are adapting to the changing power system requirements incurred by variable renewable energy (VRE) sources.

WATER IN ENERGY STORAGE POWER STATION



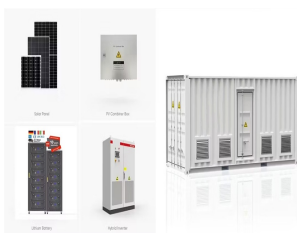
What is a storage hydropower plant? Storage hydropower plants include a dam and a reservoir to impound water, which is stored and released later when needed. Water stored in reservoirs provides flexibility to generate electricity on demand and reduces dependence on the variability of inflow.



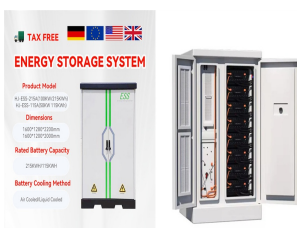
Pumped storage is a method of keeping water in reserve for peak period power demands by pumping water that has already flowed through the turbines back up a storage pool above the power plant at a time when customer demand for energy is low, such as during the middle of the night.



For now, the only energy storage technology for large-scale applications is water storage, or (i) storage of hydroelectric plant; and (ii) pump storage hydroelectric plant (PSH) [8], [9], [10]. Pumped hydroelectric systems account for 99% of the worldwide storage capacity, or about 172,000 MW [11]. Other possible large storage technologies include: compressed air, ???



Water batteries for the renewable energy sector. Pumped storage hydropower (PSH) is a form of clean energy storage that is ideal for electricity grid reliability and stability. The Fengning Pumped Storage Power Station is the one of largest of its kind in the world, with twelve 300 MW reversible turbines, 40-60 GWh of energy storage and 11



Worldwide, hydropower plants produce about 24 percent of the world's electricity and supply more than 1 billion people with power. The world's hydropower plants output a combined total of 675,000 megawatts, the energy equivalent of 3.6 billion barrels of oil, according to the National Renewable Energy Laboratory. There are more than 2,000 hydropower plants operating in the ???

WATER IN ENERGY STORAGE POWER STATION



Pumped Storage. Pumped storage plants such as Bath County Pumped Storage Station can even store power. The power grid will send energy into the electric generators at the station. The generators will spin the turbines backward, causing the turbines to pump water from a river or lower reservoir to an upper reservoir.



Pumped storage hydropower: provides peak-load supply, harnessing water which is cycled between a lower and upper reservoir by pumps which use surplus energy from the system at times of low demand. When electricity demand is high, water is released back to the lower reservoir through turbines to produce electricity. Learn more.



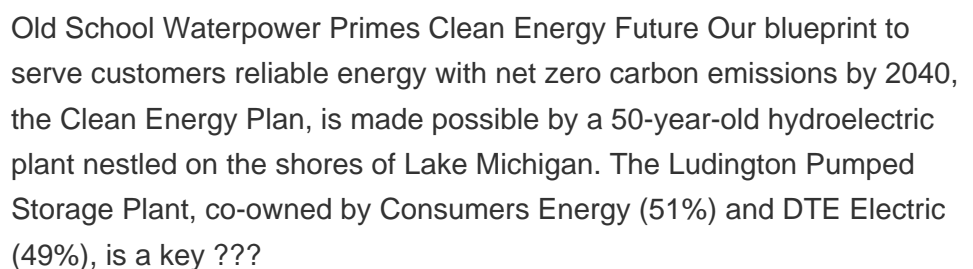
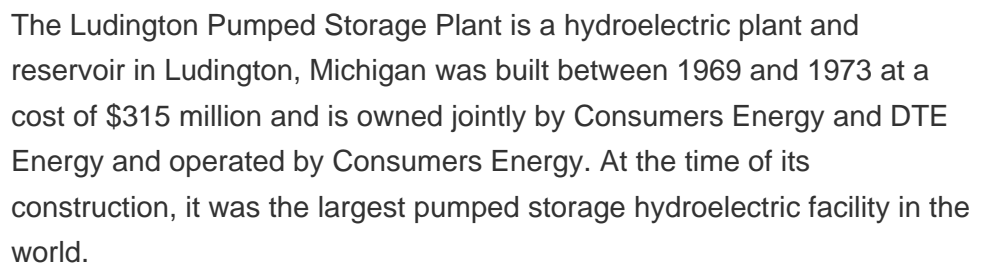
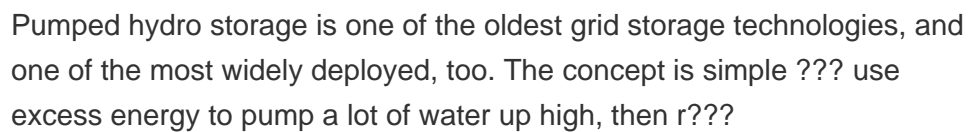
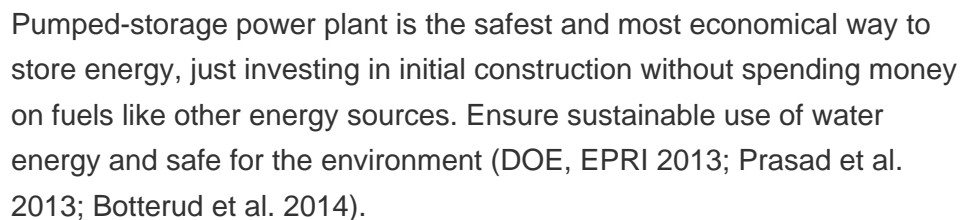
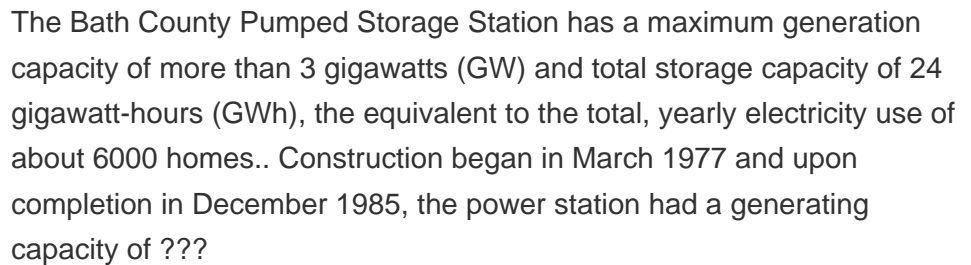
Storage of Energy, Overview. Marco Semadeni, in Encyclopedia of Energy, 2004. 2.1.1.1 Hydropower Storage Plants. Hydropower storage plants accumulate the natural inflow of water into reservoirs (i.e., dammed lakes) in the upper reaches of a river where steep inclines favor the utilization of the water heads between the reservoir intake and the powerhouse to generate ???



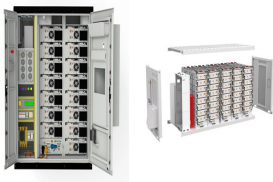
If this pumped-storage power-station represents a new generation of pumped-storage power stations, the installation of four 50-MW full-power variable speed units, a set of 100 MW energy storage battery system, and the appropriate photovoltaic energy storage in the power station empty space, combined with the conventional fixed- speed units can



The volume of water required per GWh of energy storage is about 1 Gigalitre for an off-river pumped hydro system with a head of 400 m and generation efficiency of 90%. solar and PHES rather than coal fired power stations will benefit from the absence of water loss in cooling then storage energy and power of about 500 TWh and 20 TW will



WATER IN ENERGY STORAGE POWER STATION



Large-scale integration of renewable energy in China has had a major impact on the balance of supply and demand in the power system. It is crucial to integrate energy storage devices within wind power and photovoltaic (PV) stations to effectively manage the impact of large-scale renewable energy generation on power balance and grid reliability.



This energy storage system makes use of the pressure differential between the seafloor and the ocean surface. In the new design, the pumped storage power plant turbine will be integrated with a storage tank located on the seabed at a depth of around 400???800 m. The way it works is: the turbine is equipped with a valve, and whenever the valve



"The world is witnessing a revolution in energy storage with the rise of water batteries, also known as pumped storage hydropower plants, a type of hydroelectric energy storage. It is a configuration of two water reservoirs at different elevations that can generate power as water moves down from the higher pool to the lower one (discharge



The run-of river power plant needs continuous water flow and therefore has less ability to provide power on demand. The kinetic energy of flowing water is the main source of energy. [13] Both designs have limitations. For example, dam construction can result in ???



Energy is stored when the pump drives water down a deep underground shaft, raising a piston. To return energy to the grid, the piston descends with gravity, driving water through the generator. testing of the reversible pump turbines for the Tianhuangping Pumped Storage Power Station. Development of the SVINGE software for modeling pressure

WATER IN ENERGY STORAGE POWER STATION



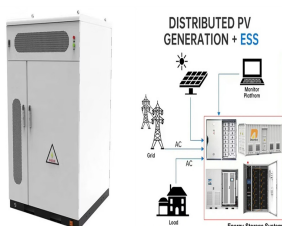
Initially designed to support the 2022 Beijing Winter Olympics, the Fengning plant now surpasses the Bath County Pumped Storage Station in the US as the world's largest pumped hydro station in terms of capacity. Pumped hydropower plants like Fengning are vital for stabilizing energy grids, especially as renewable energy use increases.



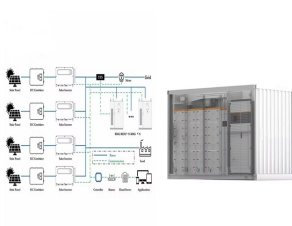
Many existing pumped storage facilities are decades old, and are undergoing rehabilitation to extend plant life and increase capacity and/or efficiency. New construction of pumped storage hydropower is coming off a 15-year lag for major facilities, and more than 20 projects are currently in the FERC permitting process.



Pumped storage hydropower (PSH), "the world's water battery", accounts for over 94% of installed global energy storage capacity, and retains several advantages such as lifetime cost, levels of ???



Overview Worldwide use Basic principle Types Economic efficiency Location requirements Environmental impact Potential technologies

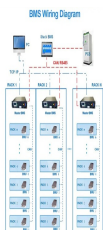


The major advantages of molten salt thermal energy storage include the medium itself (inexpensive, non-toxic, non-pressurized, non-flammable), the possibility to provide superheated steam up to 550 °C for power generation and large-scale commercially demonstrated storage systems (up to about 4000 MWh th) as well as separated power ???

WATER IN ENERGY STORAGE POWER STATION



The Dinorwig Power Station (/ d ? ? ? ? n ? ? ? ? r w ? ? ? ? /; Welsh: [d ? ? ? ? n ? ? r w ? ? ? ?]), known locally as Electric Mountain, or Mynydd Gwefru, is a pumped-storage hydroelectric scheme, near Dinorwig, Llanberis in Snowdonia national park in Gwynedd, north Wales. The scheme can supply a maximum power of 1,728 MW (2,317,000 hp) and has a storage capacity of around 9.1 GWh ? ? ?



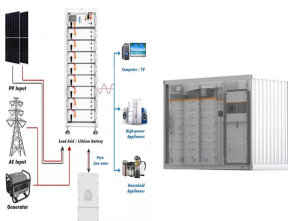
reserves, inertial and frequency response; voltage and reactive power regulations), and energy arbitrage. Chapter 1 describes the general energy conversion of the hydropower plant and the AS-PSH plant. Chapter 2 discusses the different types of AS-PSH at the generator level. Chapter 3 describes the AS-PSH from the power plant perspective.



Small and medium-sized pumped storage power station is the collective name of medium and small pumped storage power station, which refers to the pumped storage power station with a total storage capacity of less than 100 million cubic meters in the reservoir area and an installed capacity of less than 300,000 kW, and the approval and construction time of such ? ? ?



Water batteries for the renewable energy sector. Pumped storage hydropower (PSH) is a form of clean energy storage that is ideal for electricity grid reliability and stability. PSH complements ? ? ?



?? ? ywheels, solar thermal with energy storage, and natural gas with compressed air energy storage, amounted to a mere 1.6 GW in power capacity and 1.75 GWh in energy storage capacity. These data underscore the signi?? ? cant role pumped hydro storage systems play in the United States in terms of power capacity and energy storage capacity [7].

WATER IN ENERGY STORAGE POWER STATION



The existing 161,000 MW of pumped storage capacity supports power grid stability, reducing overall system costs and sector emissions. A bottom up analysis of energy stored in the world's pumped storage reservoirs using IHA's stations database estimates total storage to ???



With the increasing global demand for sustainable energy sources and the intermittent nature of renewable energy generation, effective energy storage systems have become essential for grid stability and reliability. This paper presents a comprehensive review of pumped hydro storage (PHS) systems, a proven and mature technology that has garnered significant interest in ???



HOW DO WE GET ENERGY FROM WATER? Hydropower, or hydroelectric power, is a renewable source of energy that generates power by using a dam or diversion structure to alter the natural flow of a river or other body of water. Hydropower relies on the endless, constantly recharging system of the water cycle to produce electricity, using a fuel???water???that is not ???