

WATER PLANT ENERGY STORAGE MANAGEMENT



What is a pumped storage hydropower facility? Pumped storage hydropower facilities use water and gravity to create and store renewable energy. Learn more about this energy storage technology and how it can help support the 100% clean energy grid the country???and the world???needs.



How can energy management and energy management improve water systems? Current literature emphasizes the need to optimize these systems by integrating renewables and energy management activities. By exploring the potential of coordination of energy management and renewable integration,a more efficient frameworkfor a sustainable water system can emerge.



Can water reservoirs be used as energy storage devices? Investigations showed that implementing energy storage systems allows more integration of renewables into water systems,but the potentialof using water reservoirs as energy storage devices will provide new perspectives in this field.



What is energy management in water system? Upon initial observation,energy management includes a series of goals and actions as shown in Fig. 5. With focus on water system,some researchers have explored on reducing energy costsas energy management achievement in the water system.



How can we achieve a sustainable and smart water system? Providing a research pathway to achieve a sustainable and smart water system. The world's demand for water and energy is continuously growing due to population increase. Traditional water systems are driven by energy produced using fossil fuels, which lead to global warming due to rise of greenhouse gas pollution.

WATER PLANT ENERGY STORAGE MANAGEMENT



How can integrated water systems achieve sustainable use of water resources? For different areas of integrated water systems, an evaluation of their energy impact is allowed by the presented tool to reach a sustainable use of water resources. Efficient solutions related to energy and water loss management are suggested by the tool.



Even though each thermal energy source has its specific context, TES is a critical function that enables energy conservation across all main thermal energy sources [5] Europe, it has been predicted that over 1.4×10^{15} Wh/year can be stored, and 4×10^{11} kg of CO₂ releases are prevented in buildings and manufacturing areas by extensive usage of heat and ???



A thermal energy storage (TES) system has the potential to reduce the carbon footprint of a facility. The extent of carbon footprint savings depends on factors such as the energy source, system efficiency, and the overall energy management strategy. Here are several ways in which a thermal energy storage system can help mitigate the carbon



Moreover, the chapter highlights the importance of water conservation techniques, such as rainwater harvesting, on-farm water storage, water recycling, and soil moisture conservation practices in



Energy Security: Pumped storage plants contribute to energy security, providing a reliable energy source that can be crucial in times of peak demand or grid instability. Boosting Renewables: By providing energy storage solutions for intermittent renewable energy sources like wind and solar, pumped storage plants enhance the overall efficiency

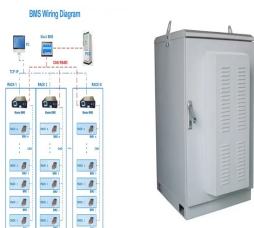
WATER PLANT ENERGY STORAGE MANAGEMENT



For example, the growing, transportation, processing, and trading of food products require large amounts of water and energy. A complete analysis is provided by the Comprehensive Assessment of Water ???



Pumped-storage hydroelectricity (PSH), or pumped hydroelectric energy storage (PHES), is a type of hydroelectric energy storage used by electric power systems for load balancing. A PSH system stores energy in the form of gravitational potential energy of water, pumped from a lower elevation reservoir to a higher elevation. Low-cost surplus off-peak electric power is typically ???



The existing 161,000 MW of pumped storage capacity supports power grid stability, reducing overall system costs and sector emissions. A bottom up analysis of energy stored in the world's pumped storage reservoirs using IHA's stations database estimates total storage to ???



Storage of Energy, Overview. Marco Semadeni, in Encyclopedia of Energy, 2004. 2.1.1.1 Hydropower Storage Plants. Hydropower storage plants accumulate the natural inflow of water into reservoirs (i.e., dammed lakes) in the upper reaches of a river where steep inclines favor the utilization of the water heads between the reservoir intake and the powerhouse to generate ???



In addition to its use in solar power plants, thermal energy storage is commonly used for heating and cooling buildings and for hot water. Using thermal energy storage to power heating and air-conditioning systems instead of natural gas and fossil fuel Improve asset management strategy with a full suite of operations and optimize

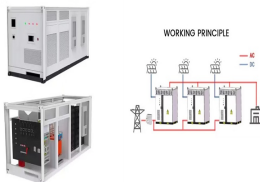
WATER PLANT ENERGY STORAGE MANAGEMENT



Globally, communities are converting to renewable energy because of the negative effects of fossil fuels. In 2020, renewable energy sources provided about 29% of the world's primary energy. However, the intermittent nature of renewable power, calls for substantial energy storage. Pumped storage hydropower is the most dependable and widely used option ???



The ABB Ability??? Energy Management for Water and Wastewater ??? OPTIMAX (R) solution has been launched to the industry to identify unnecessary energy losses within plants. Through coordinated control and visibility of multiple assets, the digital optimization tool can help reduce both energy use and energy costs.



With thermal energy storage systems, a selection has to be made from three cooling modes: (i) direct cooling from the chilled water plant, (ii) discharging the storage tank, or (iii) using both the chillers and the storage tank. At night, when cooling is often not required, the tank has to be recharged.



In this section, we formulate a goal function for optimal energy management in power systems to reduce the costs of traditional power plants, RES, and energy storage resources while considering load management through the demand response program for each type of demand. First, we model the cost function of different power plant resources.



For example, the growing, transportation, processing, and trading of food products require large amounts of water and energy. A complete analysis is provided by the Comprehensive Assessment of Water Management in Agriculture [International Water Management Institute (IWMI), 2007]. This work demonstrates that in a business-as-usual ???

WATER PLANT ENERGY STORAGE MANAGEMENT



CP is an intelligent EMS energy management system for commercial and industrial energy storage plants with AI technology to manage better and analyze the data. PEM water electrolysis equipment. PWM hydrogen production power supply.



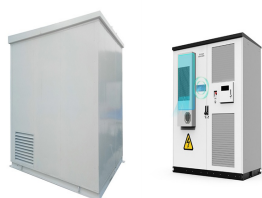
Pumped hydro storage plants store energy using a system of two interconnected reservoirs, with one at a higher elevation than the other. Water is pumped to the upper reservoir in times of surplus energy and, in times of excess demand, water from the upper reservoir is released, generating electricity as the water passes through reversible



RICHLAND, Wash.??? A commonplace chemical used in water treatment facilities has been repurposed for large-scale energy storage in a new battery design by researchers at the Department of Energy's Pacific Northwest National Laboratory. The design provides a pathway to a safe, economical, water-based, flow battery made with Earth ???



Year Energy storage system Description References; 1839: Fuel cell: In 1839, Sir William Robert Grove invented the first simple fuel cell. He mixed hydrogen and oxygen in the presence of an electrolyte and produced electricity and water.



This approach for combining energy and water management with PHS plants has been applied in countries such as Austria. Adding the need for short-term energy storage, water storage becomes an added benefit, as the energy storage need would cover the total costs of the project. CCSPHS is a configuration designed for storing large amount of

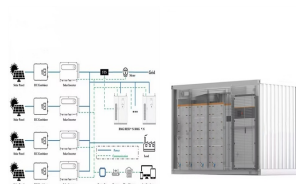
WATER PLANT ENERGY STORAGE MANAGEMENT



pumped-storage plants have been used for energy storage purposes, to guarantee the supply of electricity and reduce the impact of intermittent sources in the grid. In addition, there is an increased demand for water management solutions due ???



Energy storage is essential in enabling the economic and reliable operation of power systems with high penetration of variable renewable energy (VRE) resources. Currently, about 22 GW, or 93%, of all utility-scale energy storage capacity in the United States is provided by PSH. To



Pumped storage hydropower (PSH), "the world's water battery", accounts for over 94% of installed global energy storage capacity, and retains several advantages such as lifetime cost, levels of ???



This creates a new type of sustainable hybrid power plant which can work continuously, using solar energy as a primary energy source and water for energy storage. Junhui et al. [112] proposed a standalone renewable power system to solve the energy and water shortage in remote areas with abundant solar energy.



The answer is Thermal Energy Storage???which acts like a battery in a heating and cooling chiller plant to help improve energy, cost and carbon efficiency. One Trane thermal energy storage tank offers the same amount of energy as 40,000 AA batteries but with water as the storage material. All types of energy storage are needed for a low