

WATERJET ACCUMULATOR HIGH PRESSURE



What is a high pressure water-jet propulsion system (HWPS)? The high-pressure water-jet propulsion system (HWPS), which is a novel thruster, ejects a high-speed and high-pressure water stream from a nozzle to engender thrust and pushes watercraft forward [1]. Usually, a special axial piston water pump is employed as a power supply in HWPS.



How does a water pressure accumulator work? Because of the compressibility of water, which can reach up to 15% at 350 MPa, every piston covers a part of its working stroke in order to compress the water, without there is water discharge. In order to reduce the pressure fluctuations, an accumulator of high pressure water is installed. Its volume controls the range of fluctuations.



How long does a waterjet accumulator last? The pressure accumulator has a lifespan of 10,000 hours. Even if you maintain the water jet in the best way possible, you will still need to replace these parts since they will undergo wear and tear during usage. For details on when to replace a particular component, you should check the waterjet manufacturer's specifications.



What causes waterjet pressure fluctuation? **KEYWORDS:** Waterjet, Pressure Fluctuation, Cutting Quality. **ABSTRACT.** The pressure fluctuation in the waterjet (WJ) process is due to the mechanism of high pressure generation, characterized by a cyclical working, and to physical causes (water compressibility at the exercise pressures).



How much pressure does a high pressure pump fluctuate without accumulator? The measurements were made without accumulator as well as with accumulator volumes of 0.88 and 2.49 liters. At the high pressure pump with 37 kW and a maximum flow rate of 3.8 l/min the pressure fluctuation were nearly 150 MPa without any dampening device.

WATERJET ACCUMULATOR HIGH PRESSURE



How axial piston water pump works in HWPS? Usually, a special axial piston water pump is employed as a power supply in HWPS. The swash plate angle of this axial piston water pump is 25° , which is larger than other piston pumps (about 10°), so the water pump has a large displacement. Besides, the water pump can discharge high-pressure water.



??? One large (6"OD) accumulator ensures low pulsations in the high-pressure system. ??? A pneumatic bleed-down assembly provides for depressurization of the high-pressure system immediately upon shutdown. ??? All high-pressure tubing and fittings are Autoclave. ??? Highly reliable proximity switches control the sequencing of the intensifier.



Psi 2.2 L Waterjet Accumulator for Waterjet Cutting Machine, Find Details and Price about Waterjet Accumulator Waterjet Cutting Machine from 60000 Psi 2.2 L Waterjet Accumulator for Waterjet Cutting Machine - Shanghai Yuanhong Ultra ???



The pressure fluctuation in the waterjet (WJ) process is due to the mechanism of high pressure generation, characterized by a cyclical working, and to physical causes (water compressibility ???)



Stroke of the ultra-high pressure energy accumulator. H. mm. 500. Area of the piston rod of the pressure cylinder. A g. m^2 . 3.5×10^{-4} . Inner diameter of the ultra-high pressure energy accumulator. D. mm. 41. Reversing time of the electromagnetic valve. t. s. 0.16. Cross-sectional area of the nozzle. A. m^3 . 3.15×10^{-8} . Wall thickness of ultra

WATERJET ACCUMULATOR HIGH PRESSURE



ZhuZhou Etop Tungsten Carbide Co.,Ltd located in zhuzhou,the hometown of carbide alloy, After persistent efforts we finally become a professional high pressure waterjet parts supplier . we can suply all kinds of tungsten carbide nozzles,High Pressure Cylinder, Check Valve Body, Orifices, HP Tube and HP Seal kits and other spare parts for waterjet.

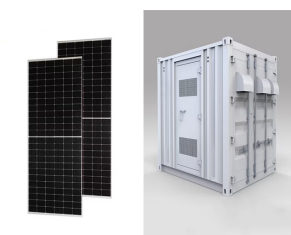


HJ Waterjet, Inc. stocks the replacement parts you need for your KMT Accumulator including Accumulator Port Sealing Head, Accumulator Nut, Accumulator Jam Nut, Accumulator Assembly and much more. +1 (706) 529 3620 YOUR HIGH-PRESSURE SOLUTION. HJ WATERJET DELIVERS THE MOST RELIABLE, HIGH-QUALITY, HIGH-PRECISION WATER JET PARTS ???



KEYWORDS: Waterjet, Pressure Fluctuation, Cutting Quality.

ABSTRACT. The pressure fluctuation in the waterjet (WJ) process is due to the mechanism of high In order to reduce the pressure fluctuations, an accumulator of high pressure water is installed. Its volume controls the range of fluctuations. If the accumulator's volume increases, the



Z-D. Adopting the most advanced design concept and structural design, equipped with high-quality supercharger parts and constant pressure piston oil pump, combined with air-cooling machine for heat dissipation, that is, to ensure a strong cutting capacity and stable performance, and at the same time can be a long time of continuous work, suitable for large ???

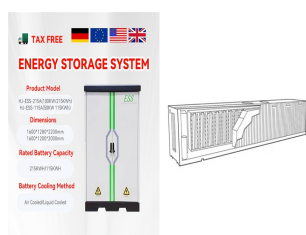


2.1 Experimental Apparatus and Rock Sample Parameters. In order to carry out the high-pressure abrasive water jet cutting extremely hard rock test, granite and anorthosite materials with different strengths were selected for this test, as shown in Fig. 1 terms of rock type, granite is very typical hard rock often encountered in TBM tunnelling engineering, and ???

WATERJET ACCUMULATOR HIGH PRESSURE



High-pressure waterjets have advanced substantially over the years in terms of longevity and reliability. Still, they need maintenance and repair from time to time. Three other common problems with intensifier-based waterjet systems are hydraulic pressure failure, low water pressure, and hydraulic temperature overheating. 1. Overstroking



Low pressure is anything under 10,000 psi (69 MPa). Medium pressure is between 10,000 and 15,000 psi (69 to 103 MPa). High pressure is between 15,000 to 40,000 psi (103 to 276 MPa). Ultrahigh-pressure is between 40,000 psi to 75,000 psi (276 to 517 MPa), for waterjet cutting most pumps are between 55-60,000 psi (379 to 413 MPa).



KMT H2O JET 50 waterjet HP.Pump KMT H2O JET 50 HP. pump is a H2O JET 50 High Pressure Pump: System Information: Unit: Rated Power: 22 kW/PS: Maximum Continuous Pressure 24V DC;5 Amps DC: Maximum Noise Level: 75/dB(A) Oil Tank Capacity: 114/L: Cooling Water Consumption(24???) 11.4L/min: Accumulator Capacity: 1/L: Visit Us . No.9-2, ???



What is a Pump Accumulator? The high-pressure pump accumulator, or hydraulic accumulator, is a high-pressure storage device. In high-pressure water cutting systems, it reduces the overall ???



of high pressure water in water jet cutting. It can save pressure, absorb shock and eliminate pulsation. The carrying capacity directly influences the cutting performance. In order to improve the actual strength of the barrel, in this paper, accumulator in the use of the process often due to high pressure and yield failure

WATERJET ACCUMULATOR HIGH PRESSURE



The Accumulator's bladder is pressurized with nitrogen and smooths out pulses that occur while cycling your Ultra High Pressure Intensifier Pump. This additional buffering protects the hydraulic components from pressure spikes that lead to component fatigue and premature hose failure thereby maintaining cut quality and reducing maintenance



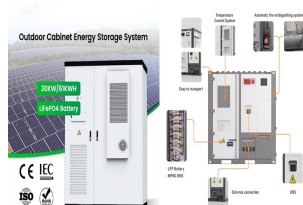
Waterjet Spare Parts Accumulator. Foshan Hairan Water Jet Technology Co. Ltd. is a Waterjet Spare Parts Accumulator manufacturer and supplier in China. Hairan's spare parts are suitable for a wide range of ultra-high pressure waterjet parts from different manufacturers, brand and sizes at home and abroad. including many different regional



Waterjet intensifier 05040696 ACCUMULATOR, TUV, 1 LITER, SLIV waterjet spare parts supplier water jet shop parts online wholesale. How does the size of the water jet cutting machine's accumulator capacity affect the machine? the more compressed air or liquid can be stored to provide a longer duration of high pressure water jetting.



3. PRINCIPLE The water jet machining involves directing a high pressure (150-1000 MPa) high velocity (540-1400 m/s) water jet (faster than the speed of sound) to the surface to be machined. The fluid flow rate is typically from 0.5 to 2.5 l/min The kinetic energy of water jet after striking the work surface is reduced to zero. The bulk of kinetic energy of jet is converted ???



Hairan waterjet is a leading china direct drive high pressure cylinder manufacturer, supplier and exporter. Spare parts include waterjet accumulator, Cutting Machine Accumulator, waterjet accumulator, etc. Each product of Hairan waterjet cutting technology Co., Ltd uses ultra-high pressure materials, perfect heat treatment and material

WATERJET ACCUMULATOR HIGH PRESSURE



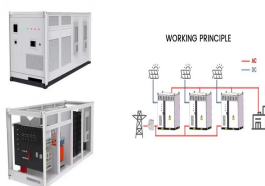
Jet Edge has produced an Accumulator Pressure Check Maintenance Training Video on how to properly charge your Accumulator. Visit the JetEdgewaterjets Resource Center to view this procedure. An Accumulator Charging Kit, (PN 28599) which includes a high pressure gauge and a low pressure gauge, is featured in the Service Procedure Video.



* R& D Team: the company has also established an ultra-high pressure water jet R& D center, hiring technicians from well-known waterjet cutting companies at home and abroad as R& D ???



Waterjet Spare Parts Accumulator Assembly 1 Liters High Pressure Attenuator 1L for Water Jet Pump Intensifier Cutting Machine :
Amazon.ca: Tools & Home Improvement Large volume high-pressure accumulator ensures the stability of cutting pressure; The application of the accumulator makes the high-pressure water cutting system safer; The



Our factory offers durable High Pressure Water Jet Nozzle with customized you want, and you can also buy it at a low price. If I place an order now, do you have it in stock? of course! including Intensifier Accumulator cutting head nozzles orifices etc. Certificated by ISO9001, the processing workshops are more than five thousand square



Luo et al. [26] adopted a semiactive accumulator capable of absorbing pressure pulsation in a high-pressure water-jet (HPWS) propulsion system under different working conditions. The results

WATERJET ACCUMULATOR HIGH PRESSURE



In addition to our high pressure valves, we offer a complete line of reactors and pressure vessels and a recently expanded family of pumping systems and generators. HiP is an ISO 9001 certified company and a preferred supplier within diverse markets such as waterjet cutting and cleaning, oil and gas, chemical and petrochemical, research and



A large capacity and high-pressure piston water pump is often used as the power supply in a high-pressure water-jet propulsion system (HWPS). When the piston water pump works, some flow and



The intensifier accepts the water under low pressure and then transfers it to the accumulator at a high pressure of about 3800 bar. The accumulator temporarily stores high-pressure water. This process involves using a high-pressure water jet, often mixed with an abrasive material, to cut through the metal. Here are some key points about