

WEIGHT OF ONE PANEL OF CHINT PHOTOVOLTAIC



How much do solar panels weigh? Here are some quick facts about the average weight of solar panels with differing wattages: 100-watt solar panels from 5 of the most popular brands average 18.8 pounds. 200-watt solar panels from 5 of the most popular brands average 23.28 pounds. Most 60-cell solar panels weigh about 44.9 pounds.



How much does A 72-cell solar panel weigh? 72-cell solar panels weigh around 61.73 pounds. As you may recall, these larger panels usually provide 350 to 400 watts. The weight of a solar panel per unit is an important consideration when deciding which size is best for your home, which we will discuss further in a later section.



How big is a 100 watt solar panel? A 100-watt solar panel measures 47 inches long by 21.3 inches wide by 1.4 inches deep. A 100-watt solar panel is not typically used to power a residential household. It can provide enough power for small household appliances but is usually used alongside a battery. With battery storage, any excess energy can be saved for later.



What is the maximum mechanical test load for Astronergy crystalline installation? 1 Refer to Astronergy crystalline installation manual or contact technical department. Maximum Mechanical Test Load = $1.5 \times \text{Maximum Mechanical Design Load}$. Chint Solar (Zhejiang) Co., Ltd. Reserves the right of final interpretation. please contact our company to use the latest version for contract.



How many Watts Does a solar panel power? The wattages of solar panels can range greatly. While some solar panels power select appliances or RVs, others are powerhouses, and others can power industrial buildings. These solar panels differ in both size and weight. On average, a solar panel can provide 15 watts per square foot.

WEIGHT OF ONE PANEL OF CHINT PHOTOVOLTAIC



How many Watts Does a 60 cell solar panel produce? Sixty-cell solar panels most commonly produce 270 to 300 wattsof energy. Seventy-two-cell solar panels measure 80 inches long by 40 inches wide. Like 60-cell solar panels,the normal depth can be between 1.4 and 1.8 inches. Seventy-two-cell solar panels have one additional row of photovoltaic cells compared to 60-cell solar panels.



As a leading supplier, we offer high-efficiency rooftop photovoltaic panels with 570~595W output, low temperature coefficient, and bifacial gain for optimal energy conversion. What are the dimensions and weight of each panel? A6: Each panel measures 2278 x 1134 x 30 mm and weighs 32.1 kg. Q7: Do these panels support net metering?



Chint Global uses only high-quality materials to ensure performance. We pride ourselves on using the best construction methods to increase the efficiency and lifespan of your module. Although a solar panel's efficiency peaks at 25%, its power-producing potential can reach a staggering 1000W. For instance, a 250W mono-crystalline PV module



Since the average residential solar panel weighs about 45 pounds and occupies about 18 square feet, the following calculations can be used to determine the approximate size and weight of a 10 kW solar system: Size: 30 panels x 18 square feet = 540 square feet; Weight: 30 panels x 45 pounds = 1,350 pounds; How Big Is a 300 W Solar Panel?



CHINT PV module products. Solar panel output and power generation are difficult to estimate because of the unique nature of each PV module system. Understanding the elements that determine a solar panel system's wattage rating is an excellent place to begin. The output of a solar panel can range from 250 watts to 400 watts.

WEIGHT OF ONE PANEL OF CHINT PHOTOVOLTAIC



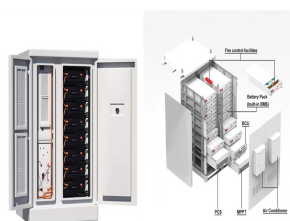
ARTICLE NUMBER (per panel)-Baseline CHSM6612P Series Model
Article No. (IEC) Article No. (UL) 1150 mm / 45.28 in / 4 mm? 1200 mm / 47.24 in / 12 AWG 23 kg / 50.6 lbs 1956 x 994 x 45 mm 77.01 x 39.13 x 1.77 in 560 kg / 1232 lbs 22 modules 72 / 6 x 12 CHSM6612P-275 CHSM6612P-280 CHSM6612P-285 CHSM6612P-290 CHSM6612P-295 CHSM6612P-300 ???



The most common solar panel sizes for residential installations are between 250W and 400W, while larger commercial installations may use panels up to 500W or more. How heavy are solar panels? There are considerable weight differences depending on the exact brand and model of solar panel you buy, but on average they range from 16kg to 24kg.



The size of these panels can range from 1.6m tall x 1.0m wide, to 1.7m tall x 1.0m wide. Most residential solar panels are 1.7m tall x 1.0m wide (or 1.7 m²), with a maximum power output of around 330W. Commercial solar panel sizes



Chint New Energy Technology Co., Ltd. (Astronergy) Solar Panel Series ASTRO N5 CHSM72N(DG)/F-BH 580-600W. Detailed profile including pictures, certification details and manufacturer PDF Weight 32.1 kg Cell Number



Astronergy was founded in 2006 and is the solar subsidiary of the Chint Group. As a leading integrated solar manufacturer, Astronergy specializes in research, development & production of high performance monocrystalline and polycrystalline cells & modules, as well as amorphous/microcrystalline thin film PV modules. Astronergy Solar Panel

WEIGHT OF ONE PANEL OF CHINT PHOTOVOLTAIC



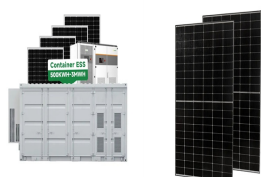
The weight also varies based on the type of material used to make the solar panel, due in part to the manufacturing process. For example, a 365-watt monocrystalline solar panel could weigh 45 pounds whereas one ???



Dirty solar panels are one of the most common problems that solar panel owners face. Dirty solar panels are not only a nuisance but also a safety concern. CHINT Solar Solutions. CHINT offers solar panel systems for homes and businesses and solar power plants. We also offer customers services such as maintenance, monitoring, and off-grid PV



One solar panel may be better suited to your needs than another. A string inverter may be a suitable option if you seek a low-cost solar inverter. On the other hand, power optimizers or microinverters might be a better choice if your solar panels are at risk of being shaded. Learn more about CHINT PV Inverter's line of solar inverters today.



Choosing the Ideal Solar Panel for Your Project. Choosing the right solar panel for your project requires careful consideration. Each type has its advantages and disadvantages. Monocrystalline solar panels have a higher efficiency rate than polycrystalline, but they ???



For a 6 KW solar panel installation consisting of 20 panels, the weight of just the panels will be close to 800 pounds. Here we are basing our calculations on an average thin-film panel weighing 40 pounds.

WEIGHT OF ONE PANEL OF CHINT PHOTOVOLTAIC



Module weight: 21.3 kg: Packing unit: 36 pcs / box: Weight of packing unit (for 40"HQ container) 811 kg: Modules per 40" HQ container:

Understanding the Cost of Solar Panel Installation. The total cost of solar panel installation includes the price of the panels, installation labor, permits, and additional equipment.



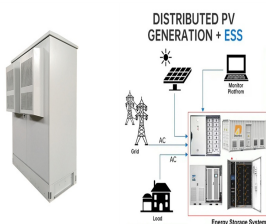
Dirty solar panels are one of the most common problems that solar panel owners face. Dirty solar panels are not only a nuisance but also a safety concern. CHINT offers solar panel systems for homes and businesses and solar power plants. We also offer customers services such as maintenance, monitoring, and off-grid PV solutions.



Highest Watt Solar Panel: The list includes Canadian Solar, Trina Solar, Longi, Jinko Solar, JA Solar, Renogy, and Sunpower. Weight: 31.8kg; Size: 2278x1134x30mm; Astronergy, a CHINT Group company, promotes innovative production, particularly in photovoltaic cells and modules. Their ASTRO 6 Series is distinguished by the



The Chint Group is one of the world's leading and most recognised panel manufacturers. With factories located in both Asia and Europe, the Chint Group is at the forefront of developing more efficient photovoltaic panels while maintaining the highest quality. This quality is backed by internationally recognised seals such as, Bloomberg Tier 1



The standard size of a 250 Watt 60 cell solar panel be it monocrystalline or polycrystalline is 39 inch X 66 inch (3.25 ft X 5.5 ft) and the weight of a 250 watt 60 cell solar panel is around 19 kg.. Whereas the size of a 320 watt 72 cell ???

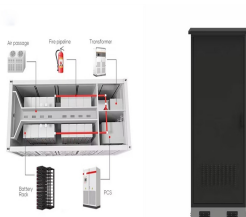
WEIGHT OF ONE PANEL OF CHINT PHOTOVOLTAIC



As more homes and businesses adopt PV modules, companies like Chint Global at the forefront of cutting technologies in solar power. Their goal is to meet their current needs while providing innovations and improvements. ???



However, a 36 cell flexible (thin-film) solar panel which can produce around 100 watts, can weigh as low as 3.5 lbs (1.6 kg). Rigid-type solar panels weigh more per square foot because they are equipped with a metal frame and a glass sheet. Which generally ensures better durability, but also adds to the weight. For example, while a 100W rigid



Aside from this cell difference, the panels have the same dimensions and weight characteristics and appear to use mostly the same materials in the manufacture of the full solar panel. Astronergy have backed this solar panel with an extended performance warranty up to an impressive minimum rating of 87.40% after 30 years.



A PV combiner box is the key to housing a joint connection between various panels and the entire system's inverter. Think of this box as the heart of a seamless solar energy solution. What is the Purpose of the PV Combiner Box? Photovoltaic combiner boxes play a crucial role in solar panel systems, especially in larger installations. They



Example 1: how to measure "weight" If 6 PV panels are erected on an independent supporting structure and the weight of each PV panel is around 26kg. The weight of the system supported by the structure will be 156kg (i.e. 26kg x 6 PV panels).

WEIGHT OF ONE PANEL OF CHINT PHOTOVOLTAIC



CHINT Global 140+ Countries and Regions 6000+ MW Cumulative Investment in Photovoltaic Power Plants Worldwide 5.1 billion USD 2020 revenue of CHINT Electric ? 1/4 ?601877? 1/4 ? 13.7 billion USD 2020 CHINT Group Revenue 13.6 billion USD CHINT Group Total Assets 30000+ Global Employees 10.02 % 2020 Year on year growth of CHINT Electric ? 1/4 ?601877? 1/4 ? 20 years



Solar panels come in a standard 1.70m x 1.0m, with an output that ranges from 250 to 340 watts. The variation in output will usually not change the size of a single solar panel. The standard size of a 250W solar panel is ???