

WELLINGTON ENERGY STORAGE PIKE PLANT



Where is Wellington South Battery energy storage system being developed? Wellington South Battery Energy Storage System is being developed in NSW,Australia. (Credit: Sungrow EMEA on Unsplash) The Wellington Battery Energy Storage System (BESS) is planned to be developed in the central west New South Wales (NSW),Australia. The project will comprise a grid-scale BESS with a total discharge capacity of around 400MW.



How much money was allocated to the Wellington Battery energy storage system? In the 2018-19 Federal Budget,the Government allocated \$400 millionbetween FY2018-19 and FY2024-25 towards the project. The Wellington Battery Energy Storage System consists of a battery energy storage system with a capacity of 500 megawatts and up to two hours of storage.



What is the Wellington Battery energy storage system (BESS)? The Wellington Battery Energy Storage System (BESS) is planned to be developed in the central west New South Wales (NSW),Australia. The project will comprise a grid-scale BESS with a total discharge capacity of around 400MW. AMPYR Australia,a renewable energy assets developer in the country,owns 100% of the BESS project.



What is the target capacity of the Wellington Bess? The target capacity of the Wellington BESS is 500 MW /1,000 MWh,making it one of the largest battery storage projects in NSW. The Wellington BESS will connect to the adjacent TransGrid Wellington substation,adjacent to the Central West Orana Renewable Energy Zone (Central West Orana REZ).



When will ampyr & shell energy build the Wellington Bess project? The Wellington BESS project is being jointly developed by AMPYR and Shell Energy. Subject to securing all relevant approvals,authorisations and financing,construction is expected to commence in mid-2023. Once operational,Shell Energy will hold the rights to charge and dispatch energy

WELLINGTON ENERGY STORAGE PIKE PLANT



from the Wellington BESS.

WELLINGTON ENERGY STORAGE PIKE PLANT



What is the Wellington Bess? The Wellington BESS will connect to the adjacent TransGrid Wellington substation, adjacent to the Central West Orana Renewable Energy Zone (Central West Orana REZ). It will complement nearby existing renewable energy generation assets as well as the proposed additional generation to be delivered as part of the Central West Orana REZ.



The Orana BESS project is 2km north-east of Wellington within the Central West Orana Renewable Energy Zone (REZ). Wellington is located on a robust part of the TransGrid 330kV transmission system and within the Central ???



Saft Executive Vice President for Energy Storage Solutions, Hervé Amossé, says Saft are proud to pioneer the utility scale energy storage system with WEL Networks and Infratec in New Zealand. "This first network-scale battery ???



VILLAGERS and parish councillors near Wellington have lost their battle against plans for a huge battery energy storage system (BESS) close to the M5 motorway. She said the council's local plan did not specifically cover ???



Wellington 1 is ranked #26 out of 58 natural gas power plants in Kansas in terms of total annual net electricity generation. Wellington 1 is comprised of 3 generators and generated 480.0 ???

WELLINGTON ENERGY STORAGE PIKE PLANT



Located at the site of a partially decommissioned multi-unit coal plant, now transitioning to gas, AES expects the project to receive a 40% investment tax credit with the Energy Community adder, and come online by ???

Commercial and Industrial ESS

- Budget-Friendly Solution
- Renewable Energy Integration
- Modular Design for Flexible Expansion



In an emergency please phone our 24 hour Electricity Emergency Line 0800 248 148 For all other matters, please view our contact details here or call your electricity retailer.. If we're unable to resolve a complaint, you can call Utilities ???



The proposed Spicers Creek Wind Farm is located on Wiradjuri Country, west of Gulgong and north east of Wellington, within the Central-West Orana Renewable Energy Zone. The proposed wind project currently comprises up to 117 wind ???



Wellington Electricity manages the local lines network that delivers power to Wellington, the Hutt Valley and Porirua. This is made up of over 4,650 square kilometres of poles, wires and other equipment that safely supplies electricity ???



Wellington is ranked #45 out of 56 distillate fuel oil power plants in Ohio in terms of total annual net electricity generation. Wellington is comprised of 1 generator and generated 9.8 MWh ???

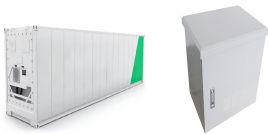
WELLINGTON ENERGY STORAGE PIKE PLANT



Pike was commissioned for design, engineering, installation and commissioning of a Battery Energy Storage System (BESS) to support a 200,000-square-foot pharmaceutical plant. This particular facility is owned by a large biotech firm ???



The town of Wellington in New South Wales will soon have a new neighbour, a 174 megawatt solar farm that will also feature battery storage. We first mentioned the Wellington Solar Farm project back in December, during ???



Sources generate electricity (e.g. generation facilities, including energy storage facilities when discharging), while loads do not generate electricity (e.g. energy storage facilities when charging). While generation power plants continue to ???



On 22 December 2023, the NSW Department of Planning and Environment approved a State Significant Development Application for the construction and operation of the Wellington South Battery Energy Storage ???



Ampyr Australia, the local arm of Singapore-based outfit Ampyr Energy says it has agreed with Shell Energy Australia to jointly develop, own and operate the battery energy storage system in Wellington. Once operational, ???

WELLINGTON ENERGY STORAGE PIKE PLANT



CentrePort's Energy Transition. CentrePort has already made great strides with its energy transition in a relatively short period of time, with its 100% electric port trucks and associated battery management system, onsite ???