

WHAT ARE THE SPECIFICATIONS OF A 100-WATT PHOTOVOLTAIC PANEL



100-Watt Solar Panel Specifications. EcoFlow 100W Rigid Solar Panel. The EcoFlow 100W Rigid Solar Panel is a monocrystalline panel that converts an industry-leading +/- 23% of direct sunlight into electricity. Connect it to a portable power station like the RIVER 2,



The GP-PV-200M, a 200-watt Solar Panel from Go Power!, is a high-efficiency monocrystalline solar module that provides outstanding performance and cost-effective solar power for high-end off-grid and mobile applications. Product Specifications. Module Specs. Solar cell type: Monocrystalline: Output power. 200 W. Rated current. 9.62 A: Rated



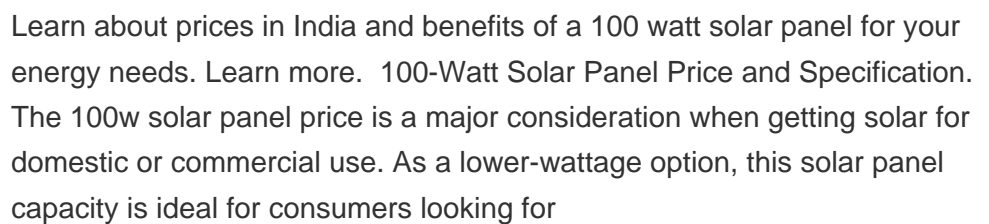
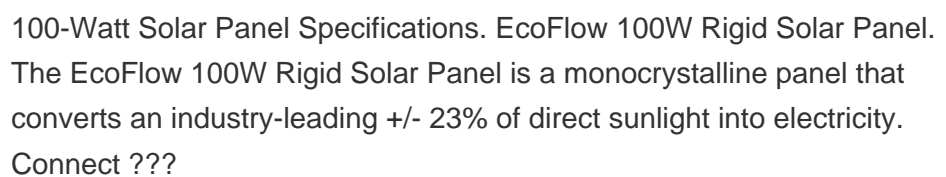
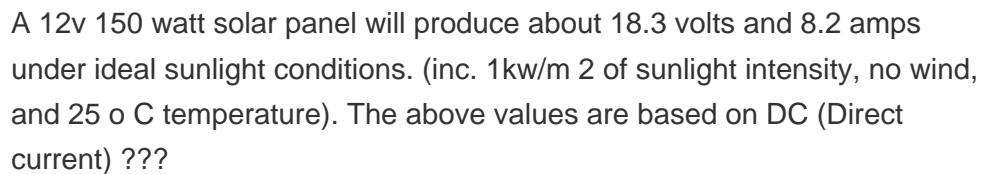
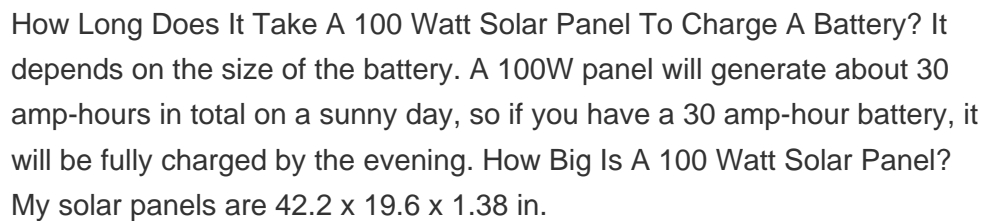
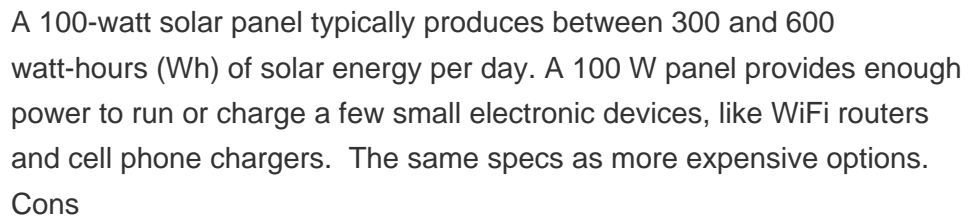
-watt solar panel could be your answer if you seek a simple and inexpensive solution to generate solar power. With their compact size and low weight, 100-watt panels can be used in various situations. However, the amount of money you can save with solar panels will depend on various specifications, including the size of your solar



These solar modules come in 12 volt DC which is a great way to charge a 12 volt battery. Even some home lighting systems are designed specifically to work with these small size solar panels.. We have mentioned complete details about size, watt, volt, working, technical specification and price of 75 watt, 80 watt, 100 watt solar panel below.



Watt Solar Panel Specs. A 100-watt solar panel is a popular choice for many homeowners and RV enthusiasts due to its versatility and affordability. But what are the typical specs of a 100-watt solar panel? A standard 100-watt solar panel usually measures around 47 x 21 inches in size and weighs approximately ten pounds.



WHAT ARE THE SPECIFICATIONS OF A 100-WATT PHOTOVOLTAIC PANEL



The LAC 100-Watt solar panel offers a feasible off-grid renewable energy solution for rooftop, RV, boat, and outdoor power systems. Years Years specifications and data described in this data sheet are tested under Standard Test Conditions (STC - Irradiance: 1000W/m² Air Mass: 1.5) and may deviate marginally from actual values. LAC solar and



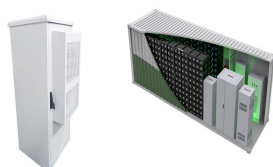
Solar Panel Specifications; 36-Cell Solar Panel Output Voltage = $36 \times 0.58V = 20.88V$. What is especially confusing, however, is that this 36-cell solar panel will usually have a nominal voltage rating of 12V. So I purchased a 400 watt solar panel setup with the Anderson connectors which the orientation of the Anderson connectors are



High in power, compact in size, this Renogy 100 Watt 12 Volt Monocrystalline Solar Panel is the perfect option for any off-grid application. Ideal for RVs, motorhomes, cabins, marine areas, home backup power, and more. The ???



Discover which solar panel sizes and dimensions are the most common in the UK, as well as which size is the best for your home. 0330 818 7480. Become a Partner. Menu. Solar Panels. Heat Pumps How large is a ???



The best way to gauge how many solar panels you need, is to understand and define the power load needed from this system. Power is measured in Watts, and capacity is commonly measured in Watt-hours (multiplying power output in ???

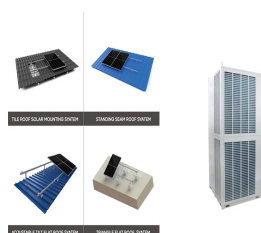
WHAT ARE THE SPECIFICATIONS OF A 100-WATT PHOTOVOLTAIC PANEL



ECO-WORTHY this 100W 12V Monocrystalline Solar Panel is primarily used on off-grid situations that include RV, boat, sailboat, yacht, truck, cabin, camper, tent, trailer, golf cart. Daily output 500WH depends on the sunlight availability. Each solar panel comes with a pair of 35 inches cables. By-pass diodes are pre-installed in waterproof IP-65 rated junction box to minimize ???



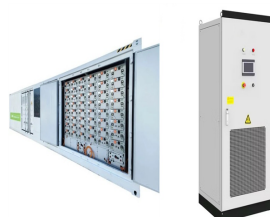
Solar panel size per kilowatt and wattage calculations depend on PV panel efficiency, shading, and orientation. Close Menu. About; EV; FAQs; Glossary; Green. Renewable; While it takes roughly 17 (400-watt) panels to ???



You can typically find these ratings on the nameplate or specification sticker on the back of the solar panels. While the amount of information on the nameplate may vary between manufacturers, the most common electrical ratings you'll find on a solar panel include: For instance, the 100-watt solar panel from our example has a Vmp rating



Thunderbolt 57325 User Manual View and Read online. Specifications. Est. reading time 10 minutes. 57325 Solar panel manuals and instructions online. Download Thunderbolt 57325 PDF manual.



What Can a 300-watt Solar Panel Run? A 300-watt solar panel can directly run a constant load of 240 DC or 210 AC. That means you can run a medium size new technology kitchen fridge, TV, Fan, Computer/laptop, LED light, etc. But with the help of a battery, you can run 1300 watts of AC load for an hour with a 300-watt solar panel.

WHAT ARE THE SPECIFICATIONS OF A 100-WATT PHOTOVOLTAIC PANEL



For example, five 100 watt panels in parallel would be $5.29 \times 5 = 26.45$ Amps. $26.45 \text{ Amps} \times 1.25 = 33$ amps and would be too much for the controller. This is because the panel can experience more current than what it ???



With solar panels, the wattage rating indicates its maximum power output under standard test conditions. Therefore, a 50-watt solar panel produces 50 watt-hours of electricity in one hour under optimal conditions. However, while a 50-watt solar panel can produce 50 watts per hour, real-life conditions will impact performance.



A premium solar panel typically can cost between \$1 and \$1.50 per watt, amounting to \$600 and \$900 for a single 600-watt solar panel. Less efficient panels might be cheaper at \$0.75 per watt, putting the price of a 600-watt panel at \$450.



You will have to look at your 100-watt solar panel specifications, figure out what size battery for a 100 watt solar panel, and look at the requirements of your array as a whole to do so. Different Ways to Calculate Wire Gauge There are various different ways that you can calculate what wire gauge you will need for your 100-watt solar panel.



Polycrystalline 100-Watt Solar Panel: This hundred-watt solar panel is made of multi-crystalline cells. The polycrystalline 100 watt solar panel price is lesser compared to monocrystalline panels. Specifications of a 100-Watt Solar Panel . A good solar panel brand ensures to make solar panels with perfection. What's even more invaluable

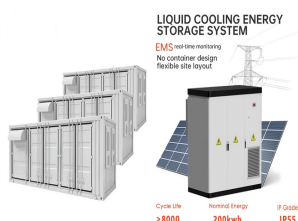
WHAT ARE THE SPECIFICATIONS OF A 100-WATT PHOTOVOLTAIC PANEL



Using information gathered from the NREL Solar Photovoltaic System, and Energy Storage Cost Benchmarks Q1, 2022 document, the cost of a 500-watt solar panel is approximately \$0.25 per watt. However, soft costs such as hauling, transporting, storing, convenience, and other state-specific price adjustment factors increase this price from \$0.7 to ???



W 12V Monocrystalline Solar Panel The best 100 watt solar panel. Its combination of size, build quality and power output make this my favorite 100 watt solar panel. It's the most compact panel I tested, making it a great option when mounting space is at a premium. It is a bit pricier than most other 100 watt panels, though.



This Renogy 550W Monocrystalline Solar Panel maximizes power output while minimizing installation space and system equipment costs, primarily used for utility-scale systems, solar power plants, residential and ???



A typical 100-watt solar panel is 41.8 inches long and 20.9 inches wide. It takes up 6.07 sq ft of area. If you have a 1000 sq ft roof, and you can use 75% of that roof area for solar panels, you can theoretically put 123 100-watt solar panels ???



What are 500W Solar Panel Specifications? On the basis of the solar panel manufacturers and solar panel model, two 500-watt solar panels can have varying specifications. However, in general, these are 500W solar panel specifications-A 500-watt solar panel has a wattage rating of 500 watts under Standard Test Conditions (STC).