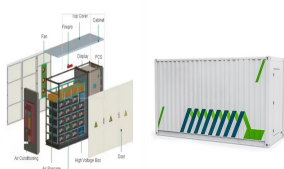
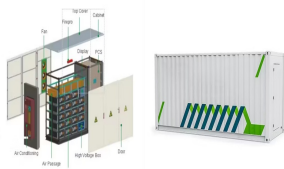


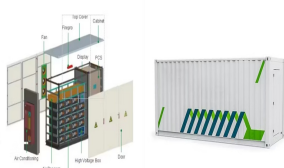
# WHAT CAN BE PLACED IN A TV STORAGE CABINET



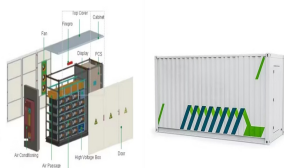
How do you store a TV in a small living room? To keep things simple, why not integrate your TV into one central storage and display area, great for small living room storage ideas. In this inviting and cozy living room, the wooden shelving and cabinet design act as the main storage and media unit in the space.



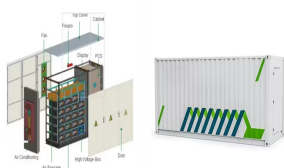
What can you store in a TV cabinet? In your TV console, you can store essential items like media devices, books, and decorative pieces, ensuring everything you need is within easy reach. It's the perfect spot to keep remotes, game consoles, and small electronics organised, making your living room both functional and tidy. 2. How to choose a TV cabinet colour?



What is included in a TV cabinet? Many include drawer and cubby space, providing you with convenient storage for DVDs, remote controls and other media accessories. We offer both self and fully assembled TV units, so you can choose a cabinet that arrives in one piece, or one that needs assembling at home.

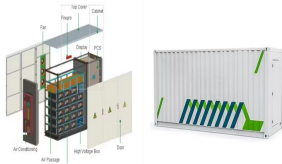


How to design a TV wall cabinet? Integrate shelves into your TV wall cabinet design for both aesthetic and practical purposes. Shelves offer a stylish way to display decor items and store media accessories, contributing to a clean and organised look that complements modern tv stand ideas for living rooms. 4. Using Side Tables for Additional Surface Area Diger TV Cabinet Large

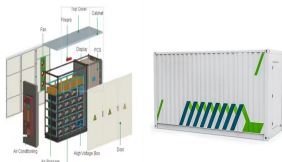


Where should a TV be placed in a living room? ??? If you own a small to medium sized living room, it would be ideal to place your TV on a small cabinet or stand (typically around knee height) in one of the corners adjacent to the windows as this will give you optimal positioning whilst removing the possibility of glare, ??? Melissa says. 6. Build TV storage along one wall

# WHAT CAN BE PLACED IN A TV STORAGE CABINET



How to decorate a living room with a TV stand? A TV stand surrounded by storage is a practical solution and can be softened with the addition of books and favorite pieces. Paint your living room shelving in a statement color to stand out rather than hide it away.



A comfortable home deserves a practical and beautiful TV stand. Our TV cabinet is made of sturdy material, so its overall load-bearing capacity reaches 165lbs. In addition, the dimension of TV stand top is 58" x 16". Thanks to these features, the TV console can accommodate TVs up to 65 inches. Besides, it is also a perfect storage helper.



Strategically placing the TV along with storage space will enhance the overall ambience and maximise functionality and entertainment. So, today, in this guide, we have compiled the top 10 TV storage ideas for small spaces, transforming your small space into a ???



Step 5: Storing the TV in the Storage Unit. Now that you've arrived at the storage unit, it's time to carefully store your TV to ensure its safety. Follow these steps to properly store your TV: Positioning the TV in the Unit. Choose a suitable location within the ???



The IKEA Hemnes TV Storage Combination (Mixed Storage) features a tall bookcase/cabinet, a Tv bench, and a storage combination with two glass door cabinet and wooden drawers. One shelf is fixed for stability, and cable management included for connecting cables and cords. The IKEA Hemnes TV Storage Combination (Mixed Storage) has an overall height of 83.5" (212 cm), ???

# WHAT CAN BE PLACED IN A TV STORAGE CABINET



The buffet turned TV component cabinet for media devices has shelves to hold the DVR, dvd player, Wii, Internet router, game consoles, cable box and all the other things that connect to the TV via cords and wires that ???



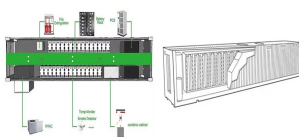
The IKEA Havsta TV Storage Combination (Display Cases) is a U-shaped Tv storage combination sporting four glass doors at the upper level and four wooden doors at the lower level/Tv bench connected to two drawers and open cabinets. The furniture leaves lots of space above the Tv bench/cabinets. The IKEA Havsta TV Storage Combination (Display Cases) has an overall ???



Comes with a TV storage cabinet and a floating shelf - you can have everything and more stored and displayed together. The TV cabinet features a middle storage compartment with a flip-down door and side shelves, with the flat top suitable for your various needs. The middle shelf can be removed to place an 25" electric fireplace; Opens



HIDDEN TV WALL First, Take Your Unique Layout Into Consideration!. I had worked a lot on this client's family room layout since she had a long list of very particular requests. We went through a number of different configurations, also taking in consideration the triple sliding doors she wanted to the backyard.



Swivelling function: This TV stand can be swivelled 25° left and right to provide you with a better viewing angle. Ample storage space: The media cabinet is designed with shelves, providing ample space to place DVDs, multimedia devices and other decorative items within the load-bearing range. Space saving: This floor TV stand has a compact design and doesn't take up much ???

# WHAT CAN BE PLACED IN A TV STORAGE CABINET



.4''' W Storage TV Cabinet. Can be used as a display cabinet, sideboard, food pantry cabinet, or TV cabinet. Suitable for you to place in any room. Door Material: Glass; Wood; Opens in a new tab. Quickview. Black Friday Deal The spacious top of the TV cabinet can accommodate up to 65" TVs, satisfying your oversized visual



If you have space between your wall and the mounted TV, it would be a great idea to fit a cabinet. Among the options available, you can opt for traditional stack cabinets, a cantilever TV stand that incorporates glass cabinets as an all-in ???



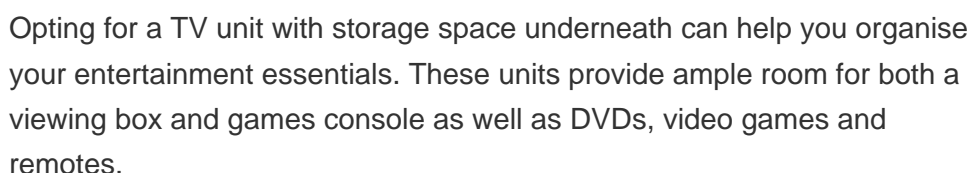
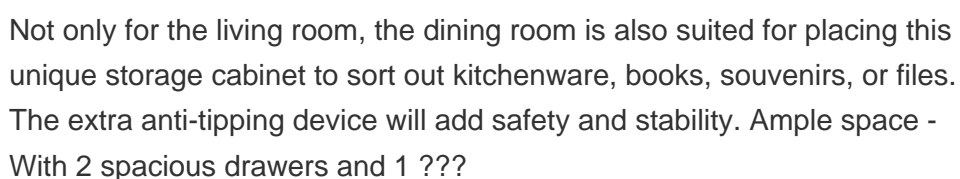
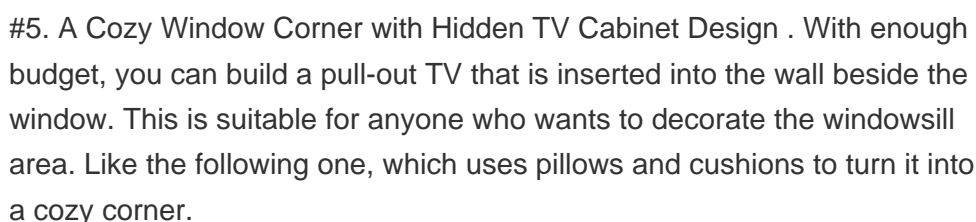
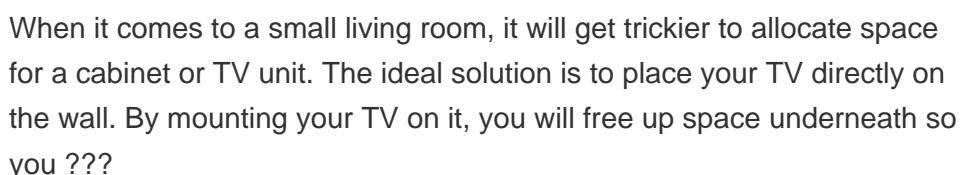
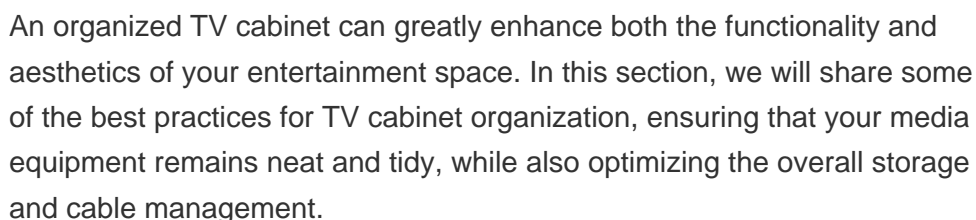
Before you go ahead and put your TV into a cabinet or cupboard away from sight. There are a few things that you need to consider first: 1- Where you will install the equipment. 2- How the AV equipment will connect to the TV. 3- How you will control the equipment when it's hidden away. 4- How easy it will be to get to the equipment.



1. What can be kept in the TV cabinet? In your TV console, you can store essential items like media devices, books, and decorative pieces, ensuring everything you need is within easy reach. It's the perfect spot to keep ???



Description: Ideal TV stand combines large storage and a stylish design. On the 105 x 40cm (L x W) tabletop, a 48" TV can be well placed. 2 open shelves and 2 enclosed cabinets offer storage for media equipment, decorations, books, sundries, etc. More, there are two 5cm wide cable management holes to organize wires.



# WHAT CAN BE PLACED IN A TV STORAGE CABINET



It's a common question ??? why would you want to put a TV in the garage? There are actually quite a few reasons! Temporary Storage. For one, the garage can be a great place for temporary storage. If you're having guests ???



Your TV and media devices will fit into these TV benches. You can place this TV stand in your living room or bedroom. It will look wonderful either way. These TV units have smooth running drawers and glass doors to showcase your TV. You can pick a TV stand with adjustable shelves and extra room for all your things.



Moreover, think about cable management solutions. The right TV unit with storage should offer discreet ways to keep those unsightly cords out of view. How a TV wall unit can enhance your living space. A TV wall unit is a focal point that can transform the feel of your living area.



Instead of simply having an entertainment centre in your living room, how about turning an entire wall into a media haven? Mount your TV on the wall and have a floating shelving system underneath for storage for a chic and ???



However, the storage cabinet and TVs are heavy, so you will want as much support from the walls as possible. There are two main types of TV stands: straight and corner. A straight TV stand can be easily placed against a wall because they don't take up much space; these types also make for an easy transition from one living room to another



# WHAT CAN BE PLACED IN A TV STORAGE CABINET



With an expansive and spacious design, it boasts an extra large tabletop, two-door cabinets, two open storage compartments, and two convenient drawers. The inner partition of the cabinets can be easily adjusted to accommodate items of varying sizes. One of the standout features of this versatile TV stand is its all-season usability.



Bestier Electric Fireplace TV Stand for 75 Inch TV, Entertainment Center with 23" Fireplace, Storage Cabinet and LED Lights, Modern TV Console for Living Room(Black Marble) (0 Reviews) \$289.99. \$289.99. Where to Place a TV Stand. Consider the living space where you'll place the TV stand. If it's a large, spacious room dedicated to your



The IKEA Besta | Eket TV Storage Combination (Overhead) is an innovation of Jon Karlsson and IKEA of Sweden sporting six hanging storage cabinets, a Tv bench with two doors and a drawer. The hanging suspension cabinets can be customized with different colors and glass to hide and display things. The IKEA Besta | Eket TV Storage Combination (Overhead) has an overall ???



The KEA Besta | Eket TV Storage Combination (Overhead L Shape) features a Tv bench with three drawers and two open compartments and an L-shaped open storage solution with six cabinets. The drawers have push-openers and large ???



If you have a large, blank wall, add a long line of built-in cabinets to ground your TV and draw the eye left and right. As a bonus, this setup works with almost any size television. Stand a smaller TV on the cabinets and ???

# WHAT CAN BE PLACED IN A TV STORAGE CABINET



These cabinets come in many shapes and sizes, but the overall concept is the same. It is a piece of furniture which hides a TV that can easily be exposed at any time to watch a show, then hidden back in the cabinet. A TV lift cabinet is a great solution for so many different rooms and needs. This article is a total guide to TV lift cabinets



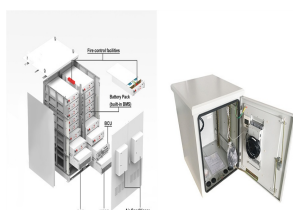
The IKEA Best? | Eket TV Storage Combination (Overhead Stepping) features five overhead storage cabinets you can suspend on a wall and a Tv bench with a combination of five drawers. The Tv bench rests on its base and has three open compartments to display your favorite items. The IKEA Best? | Eket TV Storage Combination (Overhead Stepping) has an overall height of ???



The IKEA Havsta TV Storage Combination (Bookcases) is a U-shaped storage combination sporting a Tv bench with two drawers and fourteen open cabinets and an openable lid on top where you can hide and organize electronic cables. The six cabinets on each side can act as bookshelves/case. The IKEA Havsta TV Storage Combination (Bookcases) has an overall ???



A concealed panel inside this window seat opens and a TV pulls out. For an off-the-shelf solution, place your set on a rolling cabinet or casters, so you can wheel it out of the room into a closet or other storage space. That ???



Before you delve into the installation process, gather everything you'll need to avoid any mid-project hiccups. Ensure you have: Shelves: Choose materials that suit your cabinet's function and aesthetic???common options include wood, MDF, or glass. Measuring tape: Essential for accurate spacing and fitting. Level: To ensure your shelves sit perfectly horizontal.