

WHAT CAN T BE PLACED ON PHOTOVOLTAIC PANELS



Do you need planning permission to install solar panels on your roof? An increasing number of people are investing in solar energy. More and more homes are having solar panels, or solar tiles, installed on their roofs. Of course, with such installations, the topic of planning permission and building regulations often comes to the surface.



Where should a photovoltaic system be installed? The ideal place to put a photovoltaic system is on the rooftop, as it's generally the spot most exposed to the sun and would otherwise be unused space. But which types of roof are suitable for solar panels? The first step is to make sure you own your roof.



Can a solar PV installation be a 'permitted development'? A solar PV installation can be classed as 'permitted development' subject to conditions and when not located within a conservation area, AONB or world heritage site. After a number of years exposed to wind, rain, snow, ice and sometimes animals; solar panel systems can start to develop faults.



Can I install solar panels if I don't meet building regulations? Your local authority can also apply for a Confiscation Order to take away any money you've earned with your system so there's absolutely no benefit to installing solar panels that don't meet building regulations. It's crucial that your solar installation follows all building regulations.



What should be done if a solar inverter is not working? Sound passage through cable penetrations should be minimised and gaps sealed. Correct positioning and ventilation of heat emitting equipment such as solar inverters, solar panels and cables.

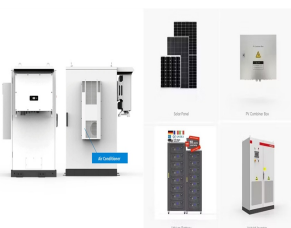
WHAT CAN T BE PLACED ON PHOTOVOLTAIC PANELS



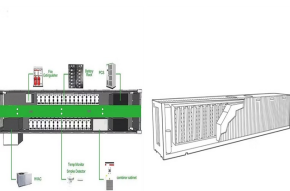
Where are solar panels not ideally suited? The following is a list of 7 situations where solar panels may not be ideally suited. For a solar panel to generate the most power, it should ideally be facing true south.



The panels must not be installed on a building that is within the grounds of a listed building or on a site designated as a scheduled monument. If your property is in a conservation area, or in a World Heritage Site, panels ???



Your solar panel system has to be isolated from your mains electricity, so engineers are able to safely perform maintenance and servicing whenever your system needs it. Neighbours can object to solar panels, but they can't usually stop you from getting them on your property, as solar panels typically fall under permitted development



Trusted Traders to find a reliable solar panel installer near you. Our service is free, and all traders listed must pass our rigorous assessments. 3. Solar panel installation is disruptive. Imagining your house filled with mess from a lengthy installation could be ???



South-facing solar panels will perform the best for a vast majority of homeowners. If you do not have a south-facing roof ??? don't worry! Your solar panels will still be able to produce energy, just not as much.. In this article, we'll discuss the best solar panel direction to maximize your output, and how having your solar panels facing any other direction can affect your panel's

WHAT CAN T BE PLACED ON PHOTOVOLTAIC PANELS



A typical 4kWp solar panel system requires around 16 panels, which can generate between 3,200 and 4,000 kWh of electricity per year, according to the Energy Saving Trust. However, the size of the system ???



In the past I've written about solar panel clamping zones which determine where, on a solar panel's edge, you can place the clamps that attach the modules to their mounting rails. What I didn't do was go into just where on a roof solar panels can and can't be installed. Depending on the roof mounting system used to attach the panels, there may be "exclusion ???



It would make sense to kill two birds with one stone and ensure that all newly built homes in the UK have solar panel systems, but is this actually what's happening right now? In this article, we'll explore the UK's current ???



Here we address some of the most frequently asked questions, myths and misconceptions surrounding solar energy, solar farms and solar panels. Do solar panels need bright sunshine in order to work? No. Solar ???



Solar panels in deserts are an increasingly, literally hot topic in the PV industry. With the phenomenal emergence of new clean energy markets all over the world, our PV quality assurance specialist team at Sinovoltaics has also been ???

WHAT CAN T BE PLACED ON PHOTOVOLTAIC PANELS



Panels can be pitched against the slope of the roof, although this will detract from the aesthetic look of the roofline. Alternatively, panels can be placed at ground level, but this does require avoiding areas of heavy shade. Even a slight angle away from true north could be enough to ensure efficient solar panels. 2 ??? Little To No Roof Space



When you make the decision to install a solar panel system at your home, there are going to be several questions on your mind. How large should your system be, how much is it going to cost, what company you ???



When Tao published a review paper on solar-panel recycling in June 2020, he calculated that the value of raw materials that could be extracted from a used panel would be around \$10. By June 2021



Identifying the area for solar panel installation helps determine how many solar mounts you need. Also, while identifying the total rooftop area, you can specify the extent of shade-free area. Step 2: Inquire the Roof Condition . Can you put solar panels on an existing roof? Yes, if your existing rooftop solar panel is not generating enough



The Photovoltaic Panel. In a system for generating electricity from the sun, the key element is the photovoltaic panel, since it is the one that physically converts solar energy into electricity; the rest is pure electronics, broken down into ???

WHAT CAN T BE PLACED ON PHOTOVOLTAIC PANELS



There are multiple solar panel grants for the purchase of panels and their installation, including the 0% VAT scheme and the ECO+ scheme. These can help alleviate some of the installation costs. However, dividing the responsibility of maintenance and solar panel upkeep can be tricky in apartments since they are shared spaces.



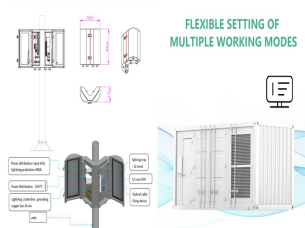
Following a consultation by the UK Government, Solar Energy UK predicts that compulsory solar panels will be included in the upcoming Future Homes Standard and Future Buildings Standard (due for publication in late 2024). The support for solar panels to become compulsory on new builds is growing.



Homes and businesses will be able to install rooftop solar panels more easily, under new rules announced today. Changes to permitted development rights rules will mean more homeowners and



Horizontal v Vertical Solar Panel Inverters. If your solar panel contractor advises you that horizontal solar panels are the best choice for your solar needs, you do not need a special inverter. Solar panel inverters work the same, regardless of the solar panel's orientation. Your contractor will be able to share the number of inverters



However, you could put a regular solar panel behind it to absorb the rest of the light. This kinda defeats the purpose of transparency though and i think it would be less efficient since regular solar panels do also absorb the invisible spectrum. Reply. June Michaels says: May 22, 2023 at 10:41 pm.

WHAT CAN T BE PLACED ON PHOTOVOLTAIC PANELS



However, solar panel orientation is also influenced by the system's tilt angle and tracking capabilities. For fixed-tilt arrays, a slightly east or west orientation bias can actually increase summer energy harvest in the morning and evening hours. Ground-mounted solar trackers can automatically adjust orientation throughout the day.



The panels can be installed parallel to the wall or at a tilt. Wall-mounted panels aren't usually as efficient as roof-mounted ones. If you can't put solar panels on your roof, don't worry, this doesn't mean you can't install them at all.



Solar panels should ideally face south in the UK, though arrays that face east or west can also be extremely productive. North-facing solar panels aren't usually worth installing. On the other hand, panels that point towards the ???



The ideal place to put a photovoltaic system is on the rooftop, as it's generally the spot most exposed to the sun and would otherwise be unused space. But which types of roof are suitable for solar panels? The first step is to ???



The panels sit in place of the tiles with a flashing kit that tiled around. There are several different types of in-roof solar kits, and they are all much the same. We mainly use GSE integration and Solar Century kits. An in-roof solar panel ???

WHAT CAN T BE PLACED ON PHOTOVOLTAIC PANELS



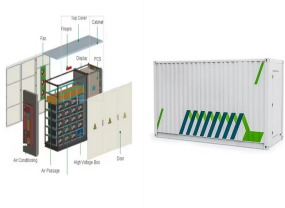
The best angle for solar panels in the UK is between 30° and 40°.; To ensure that your solar panels can produce energy optimally, they should be installed on a south-facing part of your roof.; Solar panel angle and orientation is important for UK homes, as they play a role in how efficiently your solar system can generate usable electricity.; UK weather conditions are ???



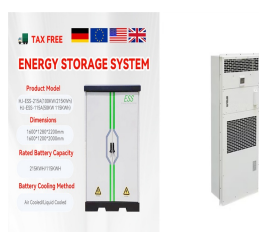
Store solar energy in a solar battery to use in the evenings; Earn payments through the Smart Export Guarantee (SEG) Keen to know more about the benefits of solar panels? Take a look at these 7 Solar Panel Benefits. Free solar panel quotes for your roof. There's likely to be a way for solar panels to be installed onto the vast majority of



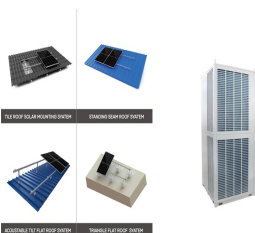
East And West Orientation: Placing some solar panels facing east and some facing west will result in the total amount of electricity produced being around 15% less than if all the panels were placed facing north. This arrangement is often called an east/west split and has the advantage of producing a more constant output of electricity during the day, which can ???



Solar Panel Building Regulations and SAP calculations, UK Guide. An increasing number of people are investing in solar energy. More and more homes are having solar panels, or solar tiles, installed on their roofs. Of course, with such installations, the topic of planning permission and building regulations often comes to the surface. There is a



Some solar panel systems can minimise the impact of shading using "optimisers". The ideal place to install solar panels is on a sloping roof, as the panels work best when angled towards the sun. But if you can't do that, there are ???



(The first truly transparent solar panel was developed by Michigan State University in 2014.) The big advantage of solar windows is that they enable a range of buildings, particularly homes and offices, to generate ???