

# WHAT DOES ENERGY STORAGE RTU MEAN



What is RTU used for? Agriculture and irrigation systems: RTU is used to monitor and control irrigation systems in agriculture, including water levels, weather conditions, and soil moisture. Renewable energy systems: RTU is used to monitor and control renewable energy systems such as solar panels, wind turbines, and hydroelectric power plants.



What is RTU telemetry? Telemetry systems: RTU is used in telemetry systems, which allows for remote monitoring and control of equipment and systems in remote locations, such as offshore oil rigs, and remote weather stations.



How do RTU units work? RTU units must be able to communicate with the central processing station in all types of environments ranging from -50 to 70 degrees Celsius. They typically use RS-232, RS-422 or RS-485 protocols in addition to wireless links in a multi-drop configuration. Some of these are designed to operate at low power levels and may be solar-powered.



What is RTU in oil & gas production? Oil and gas production: RTU are used to monitor and control production processes in the oil and gas industry, such as wellhead control, pipeline monitoring, and tank level measurement.



What is remote monitoring & control (RTU) & how does it work? RTUs also use the data to perform local control actions, ensuring efficient and autonomous operation of field equipment. This collaboration enhances the overall effectiveness of remote monitoring and control systems across various industries, including oil and gas, water management, manufacturing, and more.

# WHAT DOES ENERGY STORAGE RTU MEAN



What is a rtu500 series? Our RTU500 series brings information from the physical power grid to your SCADA system. The modular Remote Terminal Units(RTU) are designed to meet your needs in transmission and distribution automation, enabling you to have the most efficient solution for your requirements.



Commercial Energy Code ???IECC Session 2 Part 1 IECC vs. ASHRAE Session 2 Part 2 (storage, plant, warehouse, etc.) Envelope leakage ratio @ 75 Pa "ELR75" ??? A better metric RTU Envelope Penetrations Wall and roof penetration require sealing at curb and



Energy Storage Business Unit (BU) refers to a specialized division within an organization focused on the development, management, and innovation of energy storage technologies, including batteries and other forms of energy retention systems.



Looking for the definition of RTU? Find out what is the full meaning of RTU on Abbreviations ! "Ready To Use" is one option -- get in to view more @ The Web's largest and most authoritative acronyms and abbreviations resource.



Having a packaged RTU at your home will provide you with efficient cooling or heating without causing a hole in your pocket in terms of energy bills. What is the cost of an RTU unit The price of an RTU unit can vary depending on its size and features but as a general average, the cost of an RTU unit ranges from somewhere \$600 to \$8000 while



As a robust and straightforward protocol, Modbus RTU has become an essential tool for engineers and technicians working in various industries, such as manufacturing, energy, and transportation. Understanding and implementing Modbus RTU is crucial for ensuring seamless

# WHAT DOES ENERGY STORAGE RTU MEAN

---

communication between electronic devices and optimizing system performance.

# WHAT DOES ENERGY STORAGE RTU MEAN



Modbus TCP to Modbus RTU. V3.01 Completed according to the ModBus TCP X1& X3 G3 V3.19 Protocal 2020-8-14 GaoRui 1.Modify the corresponding meaning of language  
(0:English1:German2:French3:Polish4:Spanish 5: Portuguese) 2.Modify the Feedin power description (0x0046 register). 3.Write single register and Read holding register add EnableMPPT.



A Remote Terminal Unit (RTU) is a specialized industrial device that monitors and controls equipment in remote or hazardous environments. RTUs are essential components in industrial automation systems, particularly in sectors such as power generation, oil and gas, water management, and manufacturing. Renewable Energy: RTUs are deployed in



Despite these challenges, if managed correctly, a DOAS can offer businesses significant energy savings and improved indoor air quality. What is an RTU? An RTU (rooftop unit) is a prefabricated heating and air conditioning system used in many commercial and industrial buildings. These units are typically mounted on the roof of a building and are



Today, we'll discuss what does RTU mean in timeshare. What is RTU in timeshare? The RTU timeshare meaning refers to the right to use timeshares that provide owners with a non-deeded vacation contract. In other words, this type of timeshare ensures an individual with the right to use a specific unit of timeshare property for a determined



The RTU is a major piece of mechanical equipment for any construction project and must be fully approved by the mechanical engineer, before being ordered and installed on the project. In many instances, the mechanical subcontractor will attempt to provide an alternate to the specification.

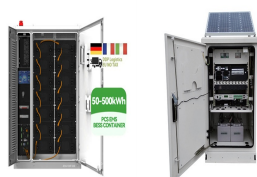
# WHAT DOES ENERGY STORAGE RTU MEAN



RS485\_MODBUS RTU energy storage grid-connected inverter communication protocol Page 2 of 29 pages Amendment record Version number Change content Responsible person Change Date  
V000B000D000 Create first draft 2018.04.09 V000B000D001 Translated to English Dr.B.A ghlani ?? 2018.11.08 V000B000D002 Final draft Dr.B.A ghlani ?? 2018.12.28



Modbus protocols are essential components in the realm of industrial automation and control systems. Designed in 1979 by Modicon (now Schneider Electric), Modbus was developed as a way to enable communication between Programmable Logic Controllers (PLCs) and other devices in industrial networks. Over time, the protocol has evolved, and its ???



What does rtu device mean? A remote terminal unit (RTU) is a microprocessor-based electronic device used in industrial control systems (ICS) to connect various hardware to a distributed control system (DCS) or supervisory control and data acquisition (SCADA). RTU is also known as remote telemetry unit or remote control unit. The RTU passes ???



Other ERV products exist. For the sake of simplicity this article will only address desiccant wheel and core theory. Replaces An Economizer. An economizer will meet code by introducing, and mixing the return air from the building with the outside air, and in most cases contains a barometric relief to remove the pre-conditioned air.



RTU: Radio Transmission Unit: RTU: Remote Test Unit (Bellcore) RTU: Radio Telemetry Unit: RTU: Receiver/Transmitter Unit: RTU: Radio Tuning Unit: RTU: Readiness Training Unit: RTU: Returned To Unit (military) RTU: Remote Trunking Unit: RTU: Routing Table Update (computing) RTU: Reinforcement Training Unit: RTU: Real-Time Ultrasound: RTU

# WHAT DOES ENERGY STORAGE RTU MEAN



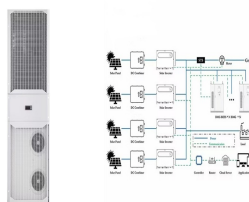
RTU HVAC pros: They use less energy. That's because all the components have been assembled and configured in a factory under optimal conditions, so the system works at maximum efficiency. Out of Sight Shouldn't Mean Out of Mind. Is an RTU HVAC right for your space? RTU units are commonly used for large, open spaces such as warehouses



Discover Electricity Abbreviations: Dive deeper into a comprehensive list of top-voted Electricity Acronyms and Abbreviations. Explore RTU Definitions: Discover the complete range of meanings for RTU, beyond just its connections to Electricity. Contribute an Abbreviation: Have an abbreviation we haven't listed? Add your knowledge to our database and help expand our ???



Explaining the "RTU" Acronym. To better understand the definition of an RTU in terms of remote monitoring, let's break down the acronym. Remote: An RTU is a device that you install at a remote location to monitor the other equipment you have there - plus relevant environmental values, such as temperature, humidity, and water leakage that have a direct ???



RTU ??? ??? Roof-Top Unit RV ??? Relief valve S ??? Switch SA ??? Supply Air, Shock absorber SAT ??? Supply air temperature SCH ??? Schedule SCR ??? Screen SCT ??? Saturated Condensing Temperature SD ??? Smoke Detector, Smoke Damper SDT ??? Saturated discharge temperature SE ??? Smoke Exhaust SEC ??? Seconds, secondary SEER ??? Seasonal Energy



DOAS provides an energy-efficient way of conditioning the outdoor air by using energy recovery methods to extract heating or cooling energy from the outgoing airstream to offset some of the energy necessary to condition the outdoor airstream. The methods of energy recovery vary, however the most common recovery system is the Energy Recovery Wheel.

# WHAT DOES ENERGY STORAGE RTU MEAN



Correctly mapping building loads to rooftop unit (RTU) capacity can minimize both capital investment and ongoing operational costs while maximizing thermal comfort. Depending on unit functionality, incorrectly sized RTUs can consume more energy or provide less comfortable space conditions (or both) than right-sized equivalents.



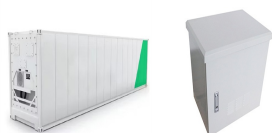
The ability to store energy can reduce the environmental impacts of energy production and consumption (such as the release of greenhouse gas emissions) and facilitate the expansion of clean, renewable energy.. For example, electricity storage is critical for the operation of electric vehicles, while thermal energy storage can help organizations reduce their carbon ???



GFSE???Global Forum on Sustainable Energy (organization)  
 GIC???Gross Inland (energy) Consumption (EU) (energy)  
 GHG???Greenhouse gas (climate) GIA???Generator Interconnection Agreement (electricity) GIC???Gas Inventory Charge (natural gas)  
 GISB???Gas Industry Standards Board (now NAESB) (US) (natural gas)  
 GLDF???Generator to Load Distribution



What does RTU stand for? Printer friendly. Menu Search. New search features Acronym Blog Free tools "AcronymFinder . Abbreviation to define. Find. abbreviation; word in meaning; Meaning; RTU: Ready to Use: RTU: Rock That Uke (movie) showing only Slang/Internet Slang definitions (show all 37 definitions)



RTU, meaning "right to use," timeshares are non-deeded timeshare contracts and give you the right to use a unit for a set amount of time. This means that, unlike a deeded ownership contract, you do not actually "own" the timeshare. Rather, the terms of the contract legally bind you to the vacation property.



# WHAT DOES ENERGY STORAGE RTU MEAN



Discover Food Abbreviations: Dive deeper into a comprehensive list of top-voted Food Acronyms and Abbreviations. Explore RTU Definitions: Discover the complete range of meanings for RTU, beyond just its connections to Food. Contribute an Abbreviation: Have an abbreviation we haven't listed? Add your knowledge to our database and help expand our community's resource.



What does RTU stand for? Printer friendly. Menu Search. New search features Acronym Blog Free tools "AcronymFinder". Abbreviation to define. Find. abbreviation; word in meaning; Meaning; RTU: Ready to Use: RTU: Retail Tenancy Unit: showing only Business & Finance definitions (show all 37 definitions)



This will save from losing this energy because of the need to provide ventilation according to ASHRAE 62.1. An Energy Recovery Wheel can be used on 100% Outside Air Units or Rooftop Units with Economizers. Energy Recovery is mandated in most of the USA when you reach a certain minimum percentage of ventilation air and exceed certain flow rates



RTU Medical Abbreviation. RTU in Medical commonly refers to Ready-to-Use, indicating products that are pre-prepared and do not require further preparation before use, thus enhancing convenience and efficiency in clinical settings. Explore categories such as Pharmaceutical and Healthcare for more information. Related abbreviations include IV (Intravenous) and OTC ???