

WHAT FLOWERS AND PLANTS CAN BE GROWN IN A LOCKER



What plants can you plant in a container? Alan Titchmarsh shares his five favourite plants for containers in this short video from BBC Gardeners' World Magazine. Variegated foliage is a real pick-me-up all year round. For a striking display, try it with creeping Jenny (*Lysimachia nummularia*), tulips, golden narcissi or primroses.



Can you grow flowers in containers? Flowers you grow in containers are also portable, giving you the option to bring your plants indoors to add flashes of color and a touch of elegance to your dining area or to create a fragrant bouquet to grace your front foyer.



What are the most decorative container flowers? One of the most decorative container flowers on this list is the dahlia. There are a bunch to choose from. Some have tiny 2-inch pom poms, and others get larger ???dinner plate??? blooms that span 15??? across. The most common are purple, pink, yellow, or white. They will reach 3-4??? tall, and prefer full sun.



What are the different types of container flower designs? When it comes to container flower designs you can make yourself, there are endless options. The main three categories most of these options fall into are the single accent design, a multicolored design, or the mixed-bag design.



Which plants are best for small pots? Aloe Vera plants, known for their medicinal properties, are an excellent choice for small pots in sunny spots. They require minimal water, thriving in dry conditions with good drainage. These low-maintenance plants are perfect for busy gardeners or those new to container gardening. 8. Baby Toes (*Fenestraria Rhopalophylla*)

WHAT FLOWERS AND PLANTS CAN BE GROWN IN A LOCKER



Why is container gardening a good idea? Container gardening is a wonderful way to learn about plants and hone your gardening skills without becoming overwhelmed by having to manage too much space. Curating a container garden full of flowers is a wonderful way to brighten up any patio, porch, or windowsill with natural vibrance and beauty.



The plant can grow up to twelve feet tall and multiple feet wide, but you can limit its size by growing it in pots. The plant prefers wet soil, shallow standing water, and full or partial sun. If it grows in the right conditions, it will produce ???



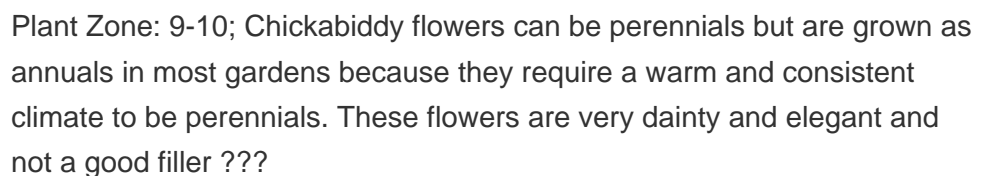
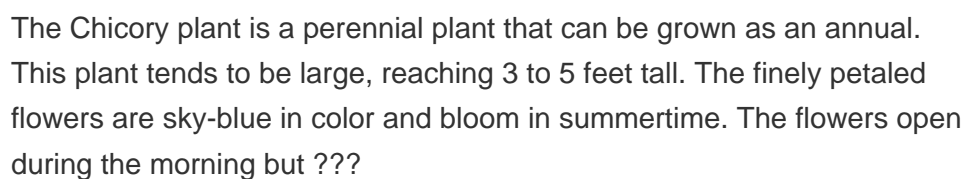
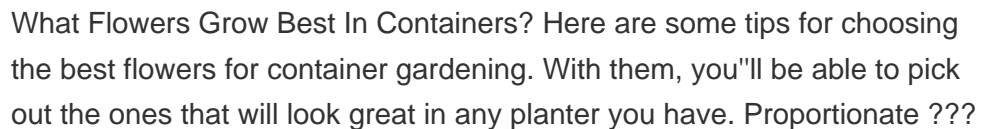
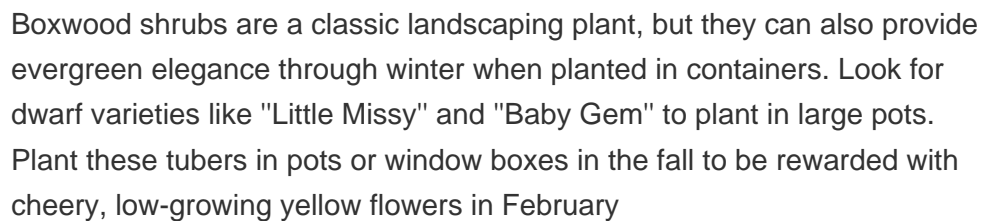
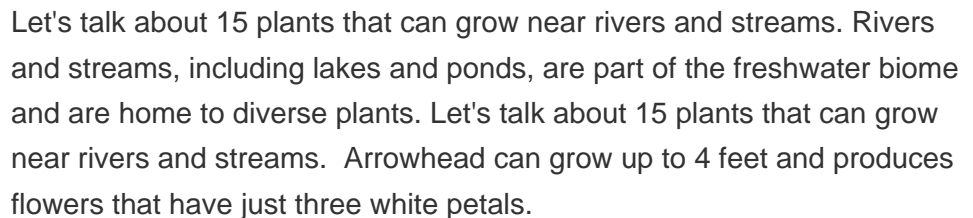
Artemisia: This perennial plant is grown more for its silvery, white foliage than for the small, white flowers, but makes an excellent backdrop for more showy flowers in a perennial bed. Give Artemisia (hardy to zone 4) dry, moderately fertile soil. Alyssum: Classified as a perennial, this plant is grown as an annual in cold climates. Its tiny



Radishes grow quickly and can act as a sacrificial crop, drawing pests away from the more vulnerable spinach plants. Beans and Sunflowers: Planting sunflowers near bean plants can provide structural support for climbing bean varieties while attracting birds that feed on bean-loving insects like aphids and caterpillars. The tall sunflower stalks



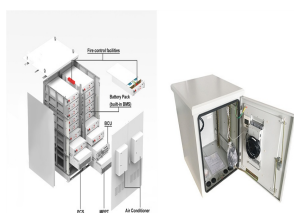
Clivias are striking winter hardy flowers excellent for container gardening. They're a lovely orange hue and also tough plants. Clivia flowers can tolerate cold climates ??? but the temperature should stay above 35 degrees ???



WHAT FLOWERS AND PLANTS CAN BE GROWN IN A LOCKER



Annuals and tender perennials are usually only grown for the year before being discarded, so don't require much root space ??? and you can try different colours and flowers each year. Classic choices include petunias, ???



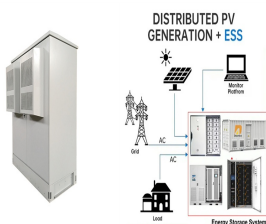
Freesia can be grown in two ways, from either prepared corms or unprepared. The corms ??? similar to a bulb ??? can be heat treated to mimic the plant's native South African conditions. These prepared corms should be ???



It is usually grown from bare root which can be easily transported during the plant's dormant season in the winter months. Bloom Britannia While we live in an age where plants and flowers from around the ???



The large, purple, clustered flowers grow on plants that can be over 6 feet tall in the right place. Where is that place? Since this plant likes moist soil, many wild ones grow along stream beds and riverbanks in full sun. Pollinators love Joe-Pye weed, so add a couple to the back of your sunny border. Joe-Pye weed is a native pollinator favorite.



Winter jasmine is a perennial shrub that blooms in late winter, adding bright yellow to the dreary landscape. The small, tubular flowers are each about 1 inch wide. These shrubs resist deer, drought, and disease, and you can even plant them on slopes. You can also grow this fast-growing plant as a trailing vine, training it up rock walls and more.

WHAT FLOWERS AND PLANTS CAN BE GROWN IN A LOCKER



You can also fill a tall vase with pebbles or beads, and sit the plant into the vase so that the roots grow into the pebbles, but the bulb and the above ground portion of the plant are kept dry, which will extend the period in which the flowers are producing and looking their best.



If you'd like to grow a houseplant in water, you can start with a fully grown plant previously grown in soil or with a cutting. I've tried both methods and they've worked fine, although I personally prefer using cuttings: it saves me the time of having to clean all the dirt off the roots first, and also eliminate the small chance of a plant failing to adapt to life in water.



Century plants grow as large bulbs that can grow up to 7 inches tall. They produce umbel-like clusters of small pink or red flowers followed by fans of grayish-green leaves. Starfish flowers can be grown in containers. Scientific Name: *Stapelia* spp. Growing Zones: 9 to 10: Flowering Season: Fall: Light Requirements: Full sun: Mature Height



This article will introduce 14 beautiful flowers that grow in snowy conditions, brightening up the landscape even during the coldest months. These winter-blooming flowers come in different colors, sizes, and shapes, adding a touch ???

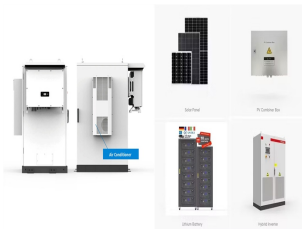


Freesia plants grow well in containers and can even be grown indoors as you would grow paperwhites or amaryllis in winter. Choose a pot that is at least six inches deep, preferably deeper, to accommodate the taproot. ???

WHAT FLOWERS AND PLANTS CAN BE GROWN IN A LOCKER



26 Late Summer Flowers You Can Still Plant for Last-Minute Color Before Fall. 12 Best Shade Plants to Grow Along a North-Facing Wall. 24 Best Types of Salt-Tolerant Plants for Beach and Roadside Landscaping. 28 Best Small Full-Sun Perennials. How to Stake Tomatoes.



These flowering plants can grow to be fairly tall, and some of them are even considered to be small trees. They symbolize either understanding or heartlessness. Sunflower. Sunflowers are one the most popular garden plants ???



Leaves can grow submerged or emerged, and white flowers rise above the water's surface. Broadleaf arrowhead grows in ponds up to 12" (30 cm) deep. The clumping plant grows between 1 and 4 ft. (0.3 ??? 1.2 m) tall. Dainty ???



Another essential factor is soil requirements. Some flowers can grow in both well-drained and poorly-drained soils. Look for plants that can thrive in various soil types, from sandy to clay, and can tolerate different soil pH levels. This adaptability allows these flowers to grow in diverse locations.

Sunlight Preferences

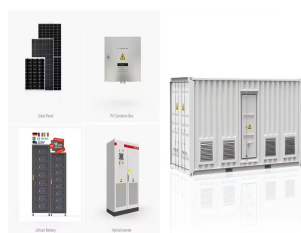


Knowing what hardiness zone the Philippines is in is critical to understanding the easiest flowers that can be grown. Like many other annual flowers, petunias can become a victim of garden pests like chipmunks and rabbits who eat the plants before flowers bloom. Related: 20 Ways to Deter Rabbits from Your Garden. Related:

WHAT FLOWERS AND PLANTS CAN BE GROWN IN A LOCKER



Ivy flowers are greenish-yellow, and the plant also produces a greenish-black berry. Pollinators love ivy flowers, so plant some if you want to encourage bees to come and help pollinate the rest of your garden. Roses. A perennial favorite, this flowering plant can grow up to 20 feet tall.



We've compiled a list of our top picks of flowers to grow in containers, provided some pro tips to help you get started on the right foot, and even threw in links to some videos that will give you a more in-depth tutorial on how to grow and ???



Native to South America, these annuals come in a wide range of colors, including shades of pink, purple, red, and white. Petunias can create a stunning display, whether planted alone or mixed with other flowers. To grow petunias in containers, choose a well ???



The best time to water is in the evening allowing the plant to soak up what it needs overnight. Thin last month's biennials to give a final spacing of about 30cm (12???) so that they will grow into sturdy plants. For more specific tips on growing flowers, see our Flower Growing Guides for inspiration and advice. Lead image: Shutterstock



Zone 7 Plants: 20 Flowers and Plants That Can Thrive in Zone 7. Written by MasterClass. Last updated: Sep 9, 2021 ??? 4 min read. There are many annuals and perennials that will thrive year-round in USDA Hardiness Zone 7. Learn more about some of the most popular. Articles. Videos. Instructors. Explore. Articles; Sitemap;

WHAT FLOWERS AND PLANTS CAN BE GROWN IN A LOCKER



English Lavender Live Plants. You can find live plants for transplanting from Nature Hills Nursery in #1 containers.. Lavender comes in several different species but the English variety and the French type are the two most common.. 11. Siberian Iris. Siberian Iris (*Iris sibirica*) grows from a root structure called a rhizome, in full sun to part shade prefers ???



Many plants grow well in our neighbourhood including coconut trees, palm trees, mango trees, different flower plants, guava trees, flame trees, and cherry trees. I believe that it has something to do with the local weather and soil that favour those trees and flowers to grow in plenty in our area.