

WHAT IS A FLYWHEEL ENERGY STORAGE BATTERY



What is the difference between a flywheel and a battery storage system? Flywheel Systems are more suited for applications that require rapid energy bursts, such as power grid stabilization, frequency regulation, and backup power for critical infrastructure. Battery Storage is typically a better choice for long-term energy storage, such as for renewable energy systems (solar or wind) or home energy storage.



What is flywheel energy storage? Flywheel energy storage is a promising technology for replacing conventional lead acid batteries as energy storage systems. Most modern high-speed flywheel energy storage systems (FESS) consist of a huge rotating cylinder supported on a stator (the stationary part of a rotary system) by magnetically levitated bearings.



How can flywheel energy storage improve battery life & system availability? To improve battery life and system availability, flywheels can be combined with batteries to extend battery run time and reduce the number of yearly battery discharges that reduce battery life (Figure 2). Many types of medical imaging equipment, such as CT or MRI machines can also benefit from flywheel energy storage systems.



How does a flywheel system store energy? A flywheel system stores energy mechanically in the form of kinetic energy by spinning a mass at high speed. Electrical inputs spin the flywheel rotor and keep it spinning until called upon to release the stored energy. The amount of energy available and its duration is controlled by the mass and speed of the flywheel.



What is a flywheel energy storage system (fess)? Think of it as a mechanical storage tool that converts electrical energy into mechanical energy for storage. This energy is stored in the form of rotational kinetic energy. Typically, the energy input to a Flywheel Energy Storage System (FESS) comes from an electrical source like the grid or any other electrical source.

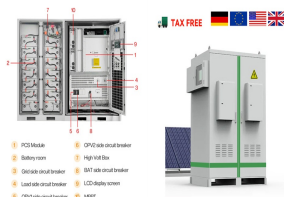
WHAT IS A FLYWHEEL ENERGY STORAGE BATTERY



Are flywheels better than batteries? Lifespan: Flywheels tend to last much longer than batteries, especially for high-cycle applications. Suitability for Short-Term Energy Needs: Flywheels excel in managing short-term energy surges or imbalances, while batteries are often better for long-term storage.



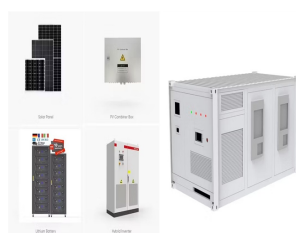
Modern flywheel energy storage systems generally take the form of a cylinder, known as a rotor, enclosed in a sealed vacuum chamber to eliminate air friction. 2 The rotor is often made from new materials, such as carbon or ???



As the demand for electric vehicles (EVs) continues to grow, researchers and engineers are exploring new ways to store and utilize energy. One such solution is the electric vehicle flywheel, a technology that offers ???

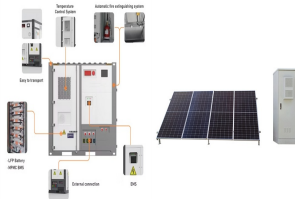


Battery energy storage systems, or BESS, are a type of energy storage solution that can provide backup power for microgrids and assist in load leveling and grid support. There are many types of BESS available depending ???



FES is a technology that uses a rotating device, called a flywheel, to store and release energy as rotational kinetic energy. The basic principle of FES is to accelerate a flywheel to a high speed, using an electric motor or ???

WHAT IS A FLYWHEEL ENERGY STORAGE BATTERY



The operational principle of a flywheel is a mechanical energy storage device that utilizes rotational momentum inertia to store and deliver back energy. Conversely, a battery is ???



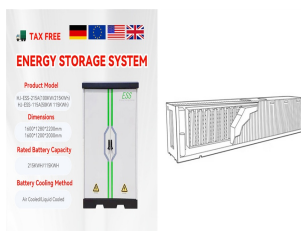
Their model involved using flywheels buried in residential lawns to store energy from solar systems and use it as a battery. They also promoted flywheel storage at remote locations such as cell phone towers. Flywheel ???



There are many types of energy storage systems, such as batteries, capacitors, pumped hydro, compressed air, thermal, and kinetic. In this blog, we will focus on one of the most promising and innovative forms of ???



Flywheel Energy Storage Systems (FESS) work by storing energy in the form of kinetic energy within a rotating mass, known as a flywheel. Here's the working principle explained in simple way, Energy Storage: The system ???



The principle of rotating mass causes energy to store in a flywheel by converting electrical energy into mechanical energy in the form of rotational kinetic energy. 39 The energy fed to an FESS is mostly dragged from an ???

WHAT IS A FLYWHEEL ENERGY STORAGE BATTERY



Piller offers a kinetic energy storage option which gives the designer the chance to save space and maximise power density per unit. With a POWERBRIDGE???, stored energy levels are certain and there is no environmental disposal issue ???



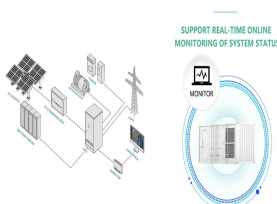
The flywheel energy storage operating principle has many parallels with conventional battery-based energy storage. The flywheel goes through three stages during an operational cycle, like all types of energy storage systems: ???



Flywheel energy storage works by storing kinetic energy in a rotating mass. A flywheel system consists of a heavy rotating mass connected to a high-speed motor or generator. The flywheel is designed to rotate at high ???



Flywheel Energy Storage (FES) systems refer to the contemporary rotor-flywheels that are being used across many industries to store mechanical or electrical energy. Unlike some much-hyped green energy storage solutions ???



Flywheel Energy Storage Systems (FESS) are essentially composed of a few key components besides the flywheel and electric motor: bearings, an enclosure, and a power electronic converter. that has already ???

WHAT IS A FLYWHEEL ENERGY STORAGE BATTERY



As of 2001, flywheel power storage technologies have storage capacity comparable to batteries and discharge speeds faster than batteries. They're typically utilized to provide load leveling for large battery systems, ???



The long duration flywheel stores energy via momentum in a spinning mass of steel. It consists of a large steel mass rotating around an axis. It stores energy in the form of kinetic energy by accelerating a large multi-tonne steel rotor to ???



This is the Dinglun Flywheel Energy Storage Power Station. At 30 MW, this is likely the biggest Flywheel Energy Storage System on the planet. Don't let that spin you around though. While its sheer size is unrivaled, It's not ???



The anatomy of a flywheel energy storage device. Image used courtesy of Sino Voltaics . This degradation becomes a significant shortcoming for batteries in local energy storage solutions, where charging and discharging ???



That is, it stores energy in the form of kinetic energy rather than as chemical energy as does a conventional electrical battery. Theoretically, the flywheel should be able to both store and extract energy quickly, and release it, both at ???

WHAT IS A FLYWHEEL ENERGY STORAGE BATTERY



Flywheel energy storage stores kinetic energy by spinning a rotor at high speeds, offering rapid energy release, enhancing grid stability, supporting renewables, and reducing energy costs. What is Flywheel Energy Storage? ???



The minimum speed of the flywheel is typically half its full speed, the storage energy is be given by $\frac{1}{2} I \omega^2$ where I is the rotor moment of inertia in kgm^2 and the ω maximum rotational speed in rad/s . The power level is ???