

WHAT IS A PHOTOVOLTAIC BRACKET CROSS BRACE



What are solar panel brackets? Solar Panel Brackets: The Ultimate Guide, types and best options. Solar panel brackets are an essential component of any solar panel system. They are used to secure solar panels onto rooftops, ground mounts, or other structures. The brackets are designed to withstand harsh weather conditions and provide a secure foundation for the panels.



How do solar panel brackets work? Solar panel brackets mount solar panels on roofs or other structures. The brackets are designed to securely hold the panels in place while allowing for proper air circulation, which keeps the panels cool and operating efficiently.



What is a solar mounting bracket? This type of mounting bracket is designed to be attached to the side of a pole, hence its name. It is used for smaller solar panel installations and is a popular choice for off-grid and remote locations.



What is a side-of-pole solar bracket? A side-of-pole solar bracket is a mounting system used to install solar panels on the sides of poles or posts. This type of bracket allows for easy and secure installation, making it ideal for applications where roof or ground mount systems are not suitable.



What is a top-of-pole solar bracket? The top-of-pole solar bracket is a mounting system used to securely install solar panels on top of a pole or post. It is designed to provide stability and optimal positioning for the solar panels, allowing them to capture maximum sunlight for efficient energy generation.

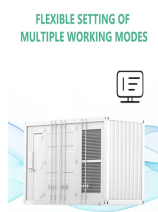
WHAT IS A PHOTOVOLTAIC BRACKET CROSS BRACE



What is a railless solar bracket? Unlike traditional railed systems, railless brackets eliminate the need for a continuous rail, simplifying the installation process and reducing material costs. The top-of-pole solar bracket is a mounting system used to securely install solar panels on top of a pole or post.



Strut braces can only be taken advantage of when going around corners or while steering over uneven surfaces. Some of the cheaper strut bars come with brackets that get bolted on to your strut tower first, then the bar gets fitted on to these brackets (which tend to break). This is the design you must avoid because your strut bar is only as



In construction, cross bracing is a system utilized to reinforce building structures in which diagonal supports intersect. Cross bracing is usually seen with two diagonal supports placed in an X-shaped manner. Under lateral force (such as wind or seismic activity) one brace will be under tension while the other is being compressed.



6 ? Single-pole Photovoltaic Bracket: The single-pole bracket consists of a single pole as the main supporting structure, with cross beams used to connect and fix the photovoltaic ???



Braces; Side Brackets; Ladders; Ring Lock Accessories; Cup Lock System Scaffolding. Verticals/Standards; Ledgers; Vertical Bay Braces; System Scaffolding Accessories. 7" x 3" x 4" Scaffold Tube Cross Brace - PSV-304 : Alternative Views: 7" x 3" x 4" Scaffold Tube Cross Brace. Price: \$ 12.50. ODFL Freight Category: 5 Shipping Length: 98.75

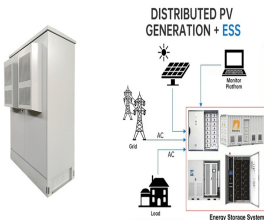
WHAT IS A PHOTOVOLTAIC BRACKET CROSS BRACE



The JA5526 sidearm braces are produced from 3/4"x1-3/4" cross section Apitong wood and have aluminum fittings with 7/16" holes for mounting to the crossarm and 9/16" holes for mounting to the pole. Our JA47xxR series underarm installation design are produced from 1-3/4" square cross section Apitong wood and have aluminum fittings with 9/16" holes for mounting to the arm and ???



You can call all of them braces or call all of them brackets. I have heard [] called brackets, square brackets, and square braces; {} called braces, curly braces, and curly brackets. called parentheses While it's true I have never heard referred to as "curved braces" or "curved brackets" or anything like that, it is fine to lump them in with other "enclosing punctuation" as other ???



Protect Your Braces Brackets; If you engage in sports/physical activities, consider wearing a braces-fit mouthguard to protect your brackets from impact. Dealing with Staining and Discolouration; Ensure thorough cleaning after eating to prevent staining around the brackets. Avoid using whitening products that may damage the brackets or create



How to Brace Roof Truss-es Using TrussBRACE: Set the first 3 truss-es using both Truss-BRACE and diag-o-nal web mem-ber brac-ing (See Dia-gram 2). Truss-BRACE is installed eas-i-ly on the top chord or oth-er web mem-ber using 3 nails. Set the ???



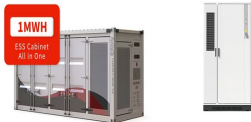
A braced frame is a structural system that is prevented from undergoing excessive sidesway under the effect of lateral loads by the provision of diagonal steel members (for steel structures) or shear walls/cores (for reinforced concrete structures). Therefore, braced frames are effective structural solutions for resisting lateral loads due to wind or earthquake in ???

WHAT IS A PHOTOVOLTAIC BRACKET CROSS BRACE

System Topology



IMAGE-1-PORTAIT ASSY MATERIAL SPECIFICATIONS Rails, caps, sliders, rail brackets, cross braces, bottom mounting clips, and top mounting clamps: 6105-T5 aluminum extrusion; caps are welded. (Rack Mounting Systems and Clamping Devices for Flat-Plate Photovoltaic Modules and Panels). This standard included electrical grounding, electrical



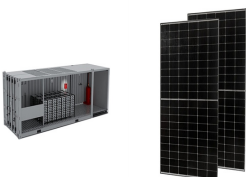
For a new home, you'll want to install cross braces during the construction of the floor frame, to avoid the aforementioned floor problem in futures. Basically, cross-bracing your floor joists makes your wood frame floor system stiffer, consequently preventing twisting, deflection, squeaking, sagging, and bouncing.



The installation selection of photovoltaic ground brackets is mainly based on factors such as the fixing method of the bracket, terrain requirements, material selection, and the weather resistance, strength, and stiffness of the bracket. First, there are many fixing methods, such as pile foundation method (direct burial method), concrete block weight method, pre-embedded method, ground ???



Cross bracing is vital for ensuring scaffold stability and safety.; Proper scaffold design and construction involve the correct installation of cross bracing.; Compliance with scaffold regulations, such as those set by OSHA, is ???



How effective is cross bracing? Cross bracing is incredibly effective. It allows the braces to support each other, as well as the floor and the joists. As long as you place the braces in the correct area, you should not ???

WHAT IS A PHOTOVOLTAIC BRACKET CROSS BRACE



The roof type photovoltaic bracket is usually divided into two kinds of flat roof bracket and inclined roof bracket. Suspended photovoltaic bracket: usually installed at the bottom of buildings or other structures, using steel ropes to hang solar panels, the tilt angle or direction of the photovoltaic bracket can be adjusted as needed.

114KWh ESS



Determining the Length of a Cross Brace. The length of a cross brace will depend on the height of the scaffolding frame it is being used with. Generally, frames 5' tall or greater will take a 7' x 4' cross brace, while 4' tall frames will take a 7' x 3' cross brace, 3' tall frames will take a 7' x 2' cross brace and 2' tall



On the ground, attach Rail Connector brackets to rail by sliding 3/8"-16 bonding bolts into side slot. Space out to match pier spacing. With brackets in place, finger tighten flange nuts onto bolts. Tape ends of rail, to keep bolts from sliding out while moving. B. FASTen CONNeCTORS Center rails on cross pipes, leaving equal distance on ends.

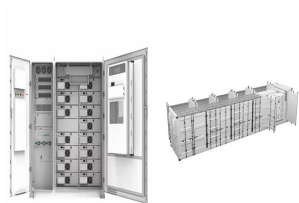


OverviewOrientation and inclinationMountingShadePV FencingSound barriersSee also



Solar panel mounting brackets. Mounting brackets are essential for maintaining solar panel stability, alignment, and secure attachment. When selecting mounting brackets, consider the compatibility with the mount ???

WHAT IS A PHOTOVOLTAIC BRACKET CROSS BRACE



Solar photovoltaic bracket system. The solar photovoltaic bracket system is a special support for the placement, installation and fixing of solar panels in solar power generation systems. The general materials are aluminum alloy, carbon steel and stainless steel etc.. The solar bracket system related products are made of carbon steel and stainless steel



Perfect strengthener for backs of units Anonymous reviewer This adjustable steel cross brace is ideal for strengthening the backs of IKEA wood units. It keeps the sides together and is extremely easy to fit. For units with back panels (usually a flimsy aspect of IKEA) it helps prevent them from being pushed out.



6. Drive mechanism: This component, found in solar trackers, includes gears, motors, and controllers that drive the motion of the panels to follow the sun. 7. Electrical boxes and wiring conduits: These are used to house electrical connections and protect the wiring that runs between the solar panels and the rest of the electrical system. 8. Adjustment mechanisms: Some ???



Stay Safe and Secure with the 10" x 4" Scaffold Tube Cross Brace
Features Weight: 15.29 lbs. Made of Pre-Galvanized Steel with Zinc Plating Shipping Dimensions: 131.25" x 2" x 1" Product Code: PSV-305
What is



We will dive into the world of PV panel mounting brackets and break down the different types that exist. Beyond aesthetics, the type of bracket you choose can also impact the efficiency and longevity of your solar

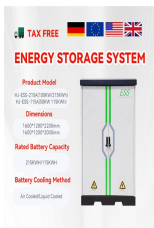
WHAT IS A PHOTOVOLTAIC BRACKET CROSS BRACE



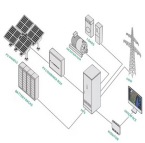
Options include cross braces, lateral braces, hurricane braces, wind bracing brackets, strut braces, angle braces, and tie-down straps. Gather Tools and Materials: Ensure you have the necessary tools, including a power drill, screws, and a ladder. Follow the manufacturer's instructions and guidelines provided with the bracing kit.



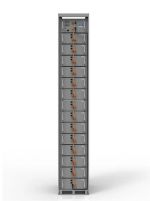
Bracing Connections involves the bolting of flat, angle, channel, I-section, and hollow section members to a gusset plate to support the column or other members. The bracing member in a bracing connection can work in tension alone, or in both tension and compression and stabilize the main components by distributing the loads.



Different design methods of solar photovoltaic brackets can make solar modules make full use of local solar energy resources, so as to achieve the maximum power generation efficiency of solar modules. Moreover, the different materials, assembly methods, bracket installation angles, wind loads and snow loads of solar photovoltaic brackets can greatly ???



You'll come across many symbols in mathematics and arithmetic. In fact, the language of math is written in symbols, with some text inserted as needed for clarification. Three important???and related???symbols you'll see often in math are parentheses, brackets, and braces, which you'll encounter frequently in prealgebra and algebra. That's why it's so important to ???



If a single brace is used, it must be sufficiently resistant to tension and compression. Cross-bracing. Cross-bracing (or X-bracing) uses two diagonal members crossing each other. These only need to be resistant to tension, one brace at a time acting to resist sideways forces, depending on the direction of

WHAT IS A PHOTOVOLTAIC BRACKET CROSS BRACE



It includes horizontal, vertical, diagonal braces as well as cross-braces to provide additional support against wind uplift or lateral loads. The purpose of a roof truss bracing diagram is to illustrate how all these components work together to create a stable structure that can withstand harsh weather conditions such as strong winds or heavy snowfall.



Brackets. The most popular type of braces requires brackets on each tooth. Brackets are small, rectangular pieces cemented to the front of your teeth. They are what holds the arch wire in place against your teeth. These brackets come in silver or gold stainless steel, or they can be clear or tooth-colored ceramic to blend in with your teeth.