

# WHAT IS A PHYSICAL ENERGY STORAGE BATTERY



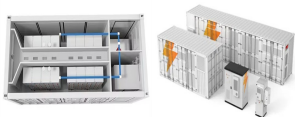
What is battery storage? Battery storage is a technology that enables power system operators and utilities to store energy for later use.



How do batteries store energy? Batteries and similar devices accept, store, and release electricity on demand. Batteries use chemistry, in the form of chemical potential, to store energy, just like many other everyday energy sources. For example, logs and oxygen both store energy in their chemical bonds until burning converts some of that chemical energy to heat.



What is a battery energy storage system (BESS)? On a more localized level, a BESS allows homes and businesses with solar panels to store excess energy for use when the sun isn't shining. Using a battery energy storage system in this way increases energy independence. It reduces reliance on the grid, reducing emissions associated with energy production and transmission.



What are the components of a battery energy storage system? The components of a battery energy storage system generally include a battery system, power conversion system or inverter, battery management system, environmental controls, a controller and safety equipment such as fire suppression, sensors and alarms. For several reasons, battery storage is vital in the energy mix.



What is battery storage & why is it important? Battery storage is one of several technology options that can enhance power system flexibility and enable high levels of renewable energy integration.



# WHAT IS A PHYSICAL ENERGY STORAGE BATTERY



What is energy storage? Energy storage involves converting energy from forms that are difficult to store to more conveniently or economically storable forms. Some technologies provide short-term energy storage, while others can endure for much longer. Bulk energy storage is currently dominated by hydroelectric dams, both conventional as well as pumped.



A lithium-ion or Li-ion battery is a type of rechargeable battery that uses the reversible intercalation of  $\text{Li}^+$  ions into electronically conducting solids to store energy. In comparison with other commercial rechargeable batteries, Li-ion batteries are characterized by higher specific energy, higher energy density, higher energy efficiency, a longer cycle life, and a longer ???



Designing a Battery Energy Storage System is a complex task involving factors ranging from the choice of battery technology to the integration with renewable energy sources and the power grid. By following the guidelines outlined in this article and staying abreast of technological advancements, engineers and project developers can create BESS



Plasma technology is gaining increasing interest for gas conversion applications, such as  $\text{CO}_2$  conversion into value-added chemicals or renewable fuels, and  $\text{N}_2$  fixation from the air, to be used for the production of small building blocks for, e.g., mineral fertilizers. Plasma is generated by electric power and can easily be switched on/off, making it, in principle, suitable ???



A battery energy storage system (BESS) is a storage device used to store energy for later use. A BESS can be charged when local electricity production is high or electricity prices are low and then discharged to power other devices or fed back into the grid during high price periods. Storage enclosures ensure physical protection for



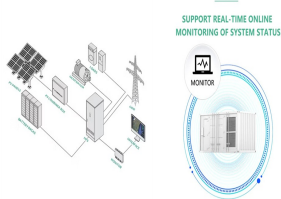
# WHAT IS A PHYSICAL ENERGY STORAGE BATTERY



Battery energy storage captures renewable energy when available. It dispatches it when needed most ??? ultimately enabling a more efficient, reliable, and sustainable electricity grid. This blog ???



Physical energy storage batteries refer to electrochemical devices designed for storing energy in a form that can be released for later use. 1. These batteries play a pivotal role in renewable energy integration, allowing for the efficient storage of energy generated from ???



OverviewHistoryMethodsApplicationsUse  
casesCapacityEconomicsResearch



Most home energy storage systems provide partial backup power during outages. These smaller systems support critical loads, like the refrigerator, internet, and some lights. The Powerwall 3 is a solid battery all around: It provides good storage capacity and continuous power ratings, can be AC or DC-coupled,



A Carnot battery uses thermal energy storage to store electrical energy first, then, during charging, electrical energy is converted into heat, and then it is stored as heat. Energy is one of the physical quantities because it is proportional to the mass of an object. The body's ability to push or pull a natural force, such as gravity



# WHAT IS A PHYSICAL ENERGY STORAGE BATTERY



Battery, in electricity and electrochemistry, any of a class of devices that convert chemical energy directly into electrical energy. Although the term battery, in strict usage, designates an assembly of two or more galvanic cells capable of such energy conversion, it is commonly applied to a



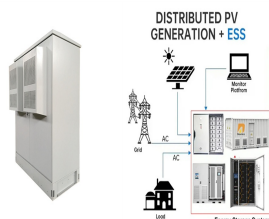
The idea of using battery energy storage systems (BESS) to cover primary control reserve in electricity grids first emerged in the 1980s. and their physical location. An appropriate BMS is also critical for safety reasons. Li-ion batteries being very energetic (particularly the lithium cobalt oxide cathode) and involving strongly exothermic



The term "energy storage tolling agreement" refers to a long-term PPA-type structure. In this article we will explore the term and its origins further, as well as providing links to two sample battery & energy storage tolling agreements???an Energy Storage Facility Agreement from Ontario ISO and an Energy Storage System Power Purchase Tolling Agreement from ???



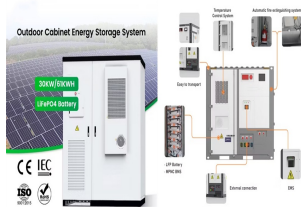
To accept and release energy, a battery is coupled to an external circuit. Electrons move through the circuit, while simultaneously ions (atoms or molecules with an electric charge) move through the electrolyte. solutions for next-generation energy storage using brand-new materials that can dramatically improve how much energy a battery can



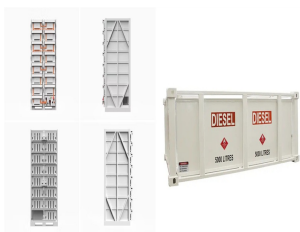
It offers more functionality than a basic physical battery, more sophisticated green energy management and more attractive payback periods despite installation and setup fees, even considering recycling at the end of its lifetime. The advantages of the brAln physical battery storage are clear, especially when it comes to the most important



# WHAT IS A PHYSICAL ENERGY STORAGE BATTERY



The Tesla Megapack is a large-scale rechargeable lithium-ion battery stationary energy storage product, intended for use at battery storage power stations, manufactured by Tesla Energy, the energy subsidiary of Tesla, Inc.. Launched in 2019, a Megapack can store up to 3.9 megawatt-hours (MWh) of electricity. Each Megapack is a container of similar size to an intermodal ???



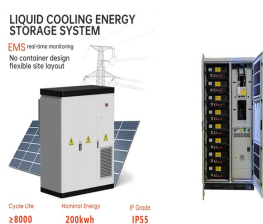
However, energy storage for a 100% renewable grid brings in many new challenges that cannot be met by existing battery technologies alone. First, more than 10 terawatt-hours (TWh) of storage capacity is needed, and multiplying today's battery deployments by a factor of 100 would cause great stress to supply chains of rare materials like



Battery storage, or battery energy storage systems (BESS), are devices that enable energy from renewables, like solar and wind, to be stored and then released when the power is needed most.. Lithium-ion batteries, which are used in mobile phones and electric cars, are currently the dominant storage technology for large scale plants to help electricity grids ???



Battery energy storage systems are a type of energy storage that uses a group of batteries to store electrical energy. Energy storage is the capture of energy when it is produced. This energy is then later used at a time when it is needed. Energy storage can reduce imbalances between energy supply and demand without increasing production.



While non-battery energy storage technologies (e.g., pumped hydroelectric energy storage) are already in widespread use, and other technologies (e.g., gravity-based mechanical storage) are in development, batteries are and will likely continue to be the primary new electric energy storage technology for the next several decades.



# WHAT IS A PHYSICAL ENERGY STORAGE BATTERY



Battery energy storage refers to employing electrochemical batteries for energy storage. Spinning reserve in generating plants, load balancing at substations, and peak shaving on the customer side of the meter are the three main uses for battery energy storage systems.. Technologies for battery storage are crucial to accelerating the transition from fossil fuels to ???



A battery energy storage system can fail for many reasons, including environmental problems, poor construction, electrical abuse, physical damage or temperature issues. A failed system could cause the battery to explode, catch fire or emit poisonous gases.



1) Battery storage in the power sector was the fastest-growing commercial energy technology on the planet in 2023. Deployment doubled over the previous year's figures, hitting nearly 42 gigawatts.



Batteries are valued as devices that store chemical energy and convert it into electrical energy. Unfortunately, the standard description of electrochemistry does not explain specifically where or how the energy is stored in a battery; explanations just in terms of electron transfer are easily shown to be at odds with experimental observations. Importantly, the Gibbs energy reduction ???



Battery Energy Storage Systems (BESS) Definition. A BESS is a type of energy storage system that uses batteries to store and distribute energy in the form of electricity. These systems are commonly used in electricity grids and in other applications such as electric vehicles, solar power installations, and smart homes.



# WHAT IS A PHYSICAL ENERGY STORAGE BATTERY



Flywheel Energy Storage Systems (FESS) work by storing energy in the form of kinetic energy within a rotating mass, known as a flywheel. Here's the working principle explained in simple way, Energy Storage: The system features a flywheel made from a carbon fiber composite, which is both durable and capable of storing a lot of energy.



Components of a Battery Energy Storage System. Key components include the battery, which can range from lithium-ion to lead-acid depending on the application. Each type offers different advantages such as energy density, cycle life, and maintenance requirements. The inverter is critical for converting electricity efficiently, ensuring that