

WHAT IS A PORTABLE POWER STORAGE DEVICE



What is a portable power station? A portable power station is a device that consists of a battery and a power inverter. The battery stores electrical energy, which is then converted by the power inverter into the type of electricity needed by your devices (e.g. AC or DC power).



What does a portable power station convert? A portable power station consists of a battery, a power inverter, and a set of outlets or ports for connecting electronic devices. The battery stores electrical energy, which is then converted by the power inverter into the type of electricity needed by your devices (e.g. AC or DC power).



What are the charging options for a portable power station? Most portable power stations can be charged via a wall outlet, a car charger, or a solar panel. Connect your devices: Once the battery is fully charged, connect your electronic devices to the portable power station using the appropriate outlets and ports.



What type of battery does a portable power station use? Portable power stations use different types of batteries, including lithium-ion, lead-acid, and nickel-metal hydride. Each type of battery has its own advantages and disadvantages, so it's important to choose the right one for your needs.



What is the difference between a generator and a portable power station? Unlike a traditional generator, which uses a combustion engine to produce electricity, a portable power station uses a rechargeable battery to store electrical energy. This makes it much quieter and more environmentally friendly than a generator.

WHAT IS A PORTABLE POWER STORAGE DEVICE



What are the best portable power stations? When it comes to portable power stations, EcoFlow is a leading brand that offers a wide range of powerful and versatile units. These are perfect for various uses such as camping, construction, and emergency backup power. Other brands also offer excellent portable power stations.



Portable hard drives, which are used for backup and extra storage in addition to transportation, are comparable in capacity to many internal hard drives. Portable drives offer more performance. The portable hard drive is ???



Designed for users who frequently need reliable power on-the-go, the Greenworks 40V Portable Power Station stands out with its ability to support a variety of devices, including laptops, for extended periods. With a 500W ???



What is a Portable Power Station? A portable power station, also known as a portable energy storage unit, is a versatile power source equipped with a built-in lithium-ion battery for storing ???



While not a device per se, the cloud is another form of external storage used by enterprises -- for backup as a service, disaster recovery as a service, infrastructure as a service and storage as a service -- and ???

WHAT IS A PORTABLE POWER STORAGE DEVICE



What is a Portable Power Station? A portable power station, also known as a portable energy storage unit, is a versatile power source equipped with a built-in lithium-ion battery for storing ???



The battery, generator, or outlet are the source of electricity. While power supply converts electricity coming from these sources into an accurate voltage required for charging a particular device. Sometimes the electric ???



Portable energy storage systems are generally more cost-effective than traditional generators, which can be expensive to purchase, operate, and maintain. The battery is an energy storage device. Take lithium batteries, ???



The EcoFlow RIVER 2 is the smallest of EcoFlow's portable power stations but still delivers 256Wh storage capacity, with an operating power output of 300W. With X-Boost, you can achieve surge power (starting watts) of ???



A power bank is a portable device that typically consists of a battery, input and output ports, and a control circuit that regulates the flow of electricity. What is a power bank used for? Basically, a power bank serves as ???

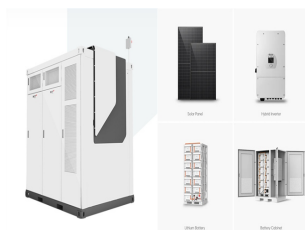
WHAT IS A PORTABLE POWER STORAGE DEVICE



In an increasingly mobile world, energy storage containers are revolutionizing how we access and utilize power. These solutions are available in various configurations, including battery-powered, solar-powered, and ???



Energy storage is important for managing the balance between energy demand and supply, especially with renewable energy sources that have fluctuating outputs. Lithium-ion batteries, known for their prevalence in ???



The device is always ready to be recharged immediately with no downtime after heavy-duty use, unlike virtually all of its competitors. You can also combine two IQ Portable Panels for up to 400 W of power. Buy now



In short, portable power stations provide off-grid electricity using a rechargeable battery. They're similar to power banks but have a larger capacity, higher output power, and AC (wall) outlets so they can power anything from ???

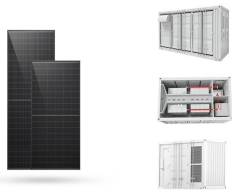


This will ensure that you have enough power to power your devices. Most portable power stations can be charged via a wall outlet, a car charger, or a solar panel. Connect your devices: Once ???

WHAT IS A PORTABLE POWER STORAGE DEVICE



What can a 200W portable power station run? A 200W portable power station can run devices that use less than 200 Watts of power. For example, the Jackery Explorer 100 Plus Portable Power Station can charge ???



For this reason, having backup power at home is essential. It's an invaluable asset for emergency preparedness, and provides you with reliable power and the ability to keep vital systems, appliances, and even your electric ???