

WHAT IS ENERGY STORAGE ENGINEERING



Why is energy storage important in electrical power engineering? Various application domains are considered. Energy storage is one of the hot points of research in electrical power engineering as it is essential in power systems. It can improve power system stability, shorten energy generation environmental influence, enhance system efficiency, and also raise renewable energy source penetrations.



What is energy storage technology? Using cryogen as a mean to store energy, a much higher energy density can be reached using liquid air (Li et al., 2010a). Before classifying the energy storage technologies, it is fundamental to define the energy storage concept. An Energy Storage is a device or a system in which energy can be stored in some form.



What is energy storage? Energy storage is the capturing and holding of energy in reserve for later use.



What are the different types of energy storage systems? It can be stored easily for long periods of time. It can be easily converted into and from other energy forms. Three forms of MESs are drawn up, include pumped hydro storage, compressed air energy storage systems that store potential energy, and flywheel energy storage system which stores kinetic energy.

2.3.1. Flywheel energy storage (FES)



What is mechanical energy storage system? Mechanical energy storage system (MESS) MES is one of the oldest forms of energy that used for a lot of applications. It can be stored easily for long periods of time. It can be easily converted into and from other energy forms.

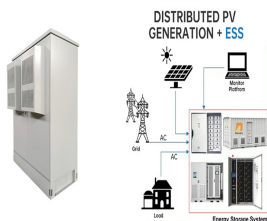
WHAT IS ENERGY STORAGE ENGINEERING



What are the applications of energy storage? Energy storage is utilized for several applications like power peak shaving, renewable energy, improved building energy systems, and enhanced transportation. ESS can be classified based on its application . 6.1. General applications



This article is the second in a two-part series on BESS ??? Battery energy Storage Systems. Part 1 dealt with the historical origins of battery energy storage in industry use, the technology and system principles behind modern ???



Energy engineers are equipped with required engineering knowledge and skills needed to solve problems in the production, processing, storage, distribution, and utilization of energy. Energy ???



This type of energy storage converts the potential energy of highly compressed gases, elevated heavy masses or rapidly rotating kinetic equipment. Different types of mechanical energy storage technology include: Compressed ???



Energy storage systems (ESS) are pivotal in the field of thermodynamics and engineering, playing a crucial role in the efficient utilization and management of energy resources. As the world transitions towards renewable energy sources, ???



Battery Energy Storage Systems (BESS) play a pivotal role in grid recovery through black start capabilities, providing critical energy reserves during catastrophic grid failures. In the event of a major blackout or grid collapse, ???

WHAT IS ENERGY STORAGE ENGINEERING



Transform your career with Coursera's online Energy Engineering courses. Enroll for free, earn a certificate, and build job-ready skills on your schedule. Join today! For Individuals; For Businesses; Explore various energy storage options ???



Energy Engineering is an open access peer-reviewed journal dedicating to engineering aspects of energy. It aims to invite researchers, engineers, scientists, technologists, planners, and policy makers to present their original research ???



Energy Engineering Technology Major. They will design electric vehicle charging infrastructures, learn about energy storage systems, and develop energy efficient motor drives and other power and energy related solutions. From the ???



This manual deconstructs the BESS into its major components and provides a foundation for calculating the expenses of future BESS initiatives. For example, battery energy storage devices can be used to overcome a ???



Where "p" is the density of water, "g" is the acceleration due to gravity, "h" is the height drop, and "???" is the efficiency of the turbines/pumps. Calculating the volume of water required for pumped storage involves considering factors such as the ???



This is seasonal thermal energy storage. Also, can be referred to as interseasonal thermal energy storage. This type of energy storage stores heat or cold over a long period. When this stores the energy, we can use it when we ???

WHAT IS ENERGY STORAGE ENGINEERING



Part 2 will include a deeper delve into the engineering of battery energy storage systems, selection of options and capabilities of BESS drive units, battery sizing considerations, and other battery safety issues. Part 2 will also ???