

WHAT IS THE CHARGING CONVERSION EFFICIENCY OF ENERGY STORAGE POWER STATION



What is a power conversion system (PCs) in a battery energy storage system? 2. unctions of Power Conversion Systems (PCS) in a Battery Energy Storage System (BESS) Bidirectional Conversion: The primary role of PCS is to convert the DC power generated or stored in the batteries into AC power that can be fed into the grid. Similarly, during charging, it converts incoming AC power into DC for storage in the batteries.



What is the impact of EV charging on the power grid? The charging of EVs will have a significant impact on the power grid. At present, regardless of HEVs or BEVs, lithium-ion batteries are used as electrical energy storage devices. With the popularity of electric vehicles, lithium-ion batteries have the potential for major energy storage in off-grid renewable energy [38].



How to increase energy storage density of electricity powered vehicles? Methods to increase the energy storage density of electricity powered vehicles are proposed. Efficient inverter and multi-speed transmission improving renewable energy conversion efficiency are discussed. The integration improves the energy efficiency of electricity powered vehicles.



How does a power conversion system (PCS) improve energy management? By regulating energy conversion and optimizing storage and release, the PCS plays an essential role in supporting renewable energy usage and ensuring grid stability. In this article, we will explore how PCS enhances energy management within energy storage systems (ESS). 1. What's power conversion system (PCS)?



Do energy storage systems boost electric vehicles' fast charging infrastructure? Gallinaro S (2020) Energy storage systems boost electric vehicles' fast charger infrastructure. Analog Devices, pp 1-4
Baumgarte F, Kaiser M, Keller R (2021) Policy support measures for widespread expansion of fast charging infrastructure for electric vehicles.

WHAT IS THE CHARGING CONVERSION EFFICIENCY OF ENERGY STORAGE POWER STATION



What is a battery energy storage system? Battery Energy Storage Systems (BESS) play a crucial role in the modern energy landscape, providing flexibility, stability, and resilience to the power grid. Within these energy storage solutions, the Power Conversion System (PCS) serves as the linchpin, managing the bidirectional flow of energy between the battery and the grid.



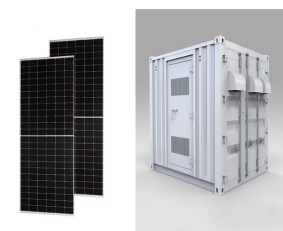
In this study, the pumping station efficiency is set at 80 %, while the battery charging and discharging efficiency is set at 90 %. The energy storage efficiency, defined as ???



Based on this analysis, it has found that the Vienna rectifier is the best suitable converter topology for the high-power DC fast-charging infrastructure (> 20 kW), thanks to its ???



To achieve the bidirectional conversion of electric energy, a power conversion system is a component connected between the energy storage battery system and the power grid. The PCS charges the batteries in the event of ???



Efficiency Optimization: An efficient PCS is critical for maximizing the overall efficiency of the energy storage system. Modern PCS designs employ advanced control algorithms to minimize losses during the energy conversion ???

WHAT IS THE CHARGING CONVERSION EFFICIENCY OF ENERGY STORAGE POWER STATION



Highlights ??? We present an overview on energy storage density and energy conversion efficiency of electricity powered vehicles. ??? Methods to increase the energy storage ???



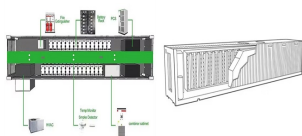
Charging Station Inefficiencies. Charging stations vary in efficiency. Outdated or poorly maintained stations might lose more energy as heat due to inefficient conversion of electricity from the grid. Choosing modern, well ???



A battery storage power station is a type of energy storage power station that uses a group of batteries to store electrical energy. Battery storage is the fastest responding dispatchable source of power on grids, and it is used to stabilize ???



On May 14, 1968, the first PSPS in China was put into operation in Gangnan, Pingshan County, Hebei Province. It is a mixed PSPS. There is a pumped storage unit with the installed capacity ???



The major requirements for rechargeable batteries are energy, power, lifetime, duration, reliability/safety, and cost. Among the performance parameters, the specifications for energy and power are relatively ???

WHAT IS THE CHARGING CONVERSION EFFICIENCY OF ENERGY STORAGE POWER STATION



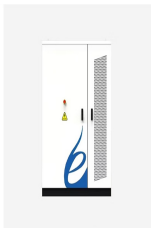
ADAC in Germany conducted a charging test with a new BMW iX, which was hooked up to a 22 kW (16 amp) AC wall charger with an ambient temperature of 73.4°F (23°C) found that to charge the iX



In the past decade, the implementation of battery energy storage systems (BESS) with a modular design has grown significantly, proving to be highly advantageous for large-scale grid-tied applications.



This review paper goes into the basics of energy storage systems in DC fast charging station, including power electronic converters, its cost assessment analysis of various ???



With the continuous development of energy storage technologies and the decrease in costs, in recent years, energy storage systems have seen an increasing application on a ???



PCS Power Conversion Systems Energy Storage. PCS power conversion system energy storage is a multi-functional AC-DC converter by offering both basic bidirectional power converters factions of PCS power and ???