

WHAT IS THE HOLE DIAMETER OF THE PHOTOVOLTAIC BRACKET NUT



What are solar panel brackets? Solar Panel Brackets: The Ultimate Guide, types and best options. Solar panel brackets are an essential component of any solar panel system. They are used to secure solar panels onto rooftops, ground mounts, or other structures. The brackets are designed to withstand harsh weather conditions and provide a secure foundation for the panels.



What are mounting brackets & rails for solar panels? Mounting Brackets are the primary components that attach the solar panels to the mounting surface. They come in various types depending on the mounting surface (roof, ground, pole, etc.). Rails: Rails are long, horizontal structures attached to the solar panels using clamps. They provide a stable base for the solar panels.



How do solar panel brackets work? Solar panel brackets mount solar panels on roofs or other structures. The brackets are designed to securely hold the panels in place while allowing for proper air circulation, which keeps the panels cool and operating efficiently.



Do solar panel brackets need to be installed correctly? Proper bracket installation is key to ensuring the longevity and performance of a solar panel system. Solar panel brackets are an important part of the installation process and should be installed by a professional. The brackets must be installed correctly to ensure the safety and longevity of the solar panel system.



How to choose solar panel mounting hardware? Selecting appropriate mounting hardware is vital for solar panels??? optimal performance and longevity. The suitable mounts secure the panels firmly and influence their energy absorption efficiency by positioning them at the ideal angle and orientation. 1. Overview of Types of Solar Panel Mounts 2. Materials Used in Solar Panel Mounting Hardware 3.

WHAT IS THE HOLE DIAMETER OF THE PHOTOVOLTAIC BRACKET NUT



What is a top-of-pole solar bracket? The top-of-pole solar bracket is a mounting system used to securely install solar panels on top of a pole or post. It is designed to provide stability and optimal positioning for the solar panels, allowing them to capture maximum sunlight for efficient energy generation.



Self-Clinching Nuts provide strong reusable female threads in panels that are too thin to be conventionally tapped. Utilising a special proven clinch feature, this fastener has excellent torque-out and push-out characteristics whilst providing ???



Bolts and Nuts: These are used for securing the brackets, rails, and clamps. The choice of bolts and nuts depends on the type of surface where the solar panels are being installed. Roof Anchors: For roof-mounted systems, ???



China Bracket Nut wholesale - Select 2024 high quality Bracket Nut products in best price from certified Chinese U Nut manufacturers, Plus Nut suppliers, wholesalers and factory on Made-in-China Name: Photovoltaic Bracket Accessories Nut. Brand Name: Goshen. 1 / 6. Favorites. Stainless Bolt Size: M20X82X460 F4. Surface Finish: Bake



Insertion: A hole is drilled or punched in the host material where you want to create a threaded connection. The rivet nut is then inserted into the hole. Compression: Using a tool designed for the purpose, the rivet nut is compressed or swaged. This deforms the rivet nut, causing it to expand and grip the surrounding material.

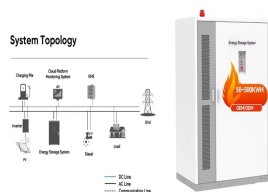
WHAT IS THE HOLE DIAMETER OF THE PHOTOVOLTAIC BRACKET NUT



Bolts and screws can be removed and reinserted into threaded inserts multiple times without damaging or weakening the existing hole; Repairing holes which have been stripped or become worn down. So-called thread ???



In another example, the tap drill size for a 9/16-inch x 20 tpi thread would be: $0.5625 - 0.05 = 0.5125$ inch. In a fractional size, this is nominally 33/64 inch. Using a metric example, a hole is required for an M5 x 0.8 thread. The correct ???



(3) Water surface type bracket. With the continuous promotion of distributed photovoltaic power generation projects, making full use of the sea, lakes, rivers and other water surface resources to install distributed photovoltaic power stations, the implementation of new forms of photovoltaic agriculture, such as fishery and light complementation, is another way to ???



These nuts come with a pilot hole which allows for precision threading while being placed in the accurate location on the surface. Since these nuts are secured in location by welding them into place, it is important to mark and establish its location beforehand. s - size of the hexagon m - height of the nut d - the nominal diameter of the



The first step is to attach the fixing bracket to the solar panel. Lay the solar panel face-down on the tarp or canvas to protect the photovoltaic surface. You want to be sure the mounting holes on the back of the panel ???

WHAT IS THE HOLE DIAMETER OF THE PHOTOVOLTAIC BRACKET NUT



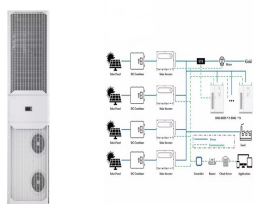
Insert the Rivet Nut: Use a rivet nut tool to insert the rivet nut into the hole. The tool pulls the body of the rivet nut, expanding it and securely fastening it to the material. Conclusion. Rivets and rivet nuts are indispensable tools in the fastener industry, offering robust solutions for permanent and removable joints, respectively.



The Spring Nut is a Key Component of the Unistrut Metal Framing System. The spring nut is very often overlooked. When most people think of metal framing systems, they tend to only think about the Unistrut channel and the Unistrut fittings. Despite that fact, Unistrut hardware is an integral part of the core functionality of the Unistrut system ??? especially spring ???



where T is the torque measurement, K is the nut factor, F is the tension and D is the bolt diameter. With this equation, if you know K , F and D , you can multiply them to get the torque needed to tighten the bolt so that it has the right amount of tension. The nut factor, K , sums up the combined effects of many variables affecting the



Smaller than a hex jam or hex finish nut, they are used with machine screws under 1/4??? in diameter. #10. Keps-K Lock Nuts. Also known as a keps nut, a k-nut or a washer nut, a keps-k lock nut has an attached free-spinning lock washer. one on each end of the bolt on to which a mounting plate bracket and attachment nuts are placed. While



Use a nut driver size chart to learn how to measure nut driver size and the different dimensions of a nut. Imperial and metric measurements included. Check it out! Pilot Hole Size Chart; Wood Screw Size Chart; Wedge Anchor Strength Chart; View All Screws Size Charts; Security Screws; Drilling & Cutting Main Menu; Drill Bits; Spade Bits;

WHAT IS THE HOLE DIAMETER OF THE PHOTOVOLTAIC BRACKET NUT



Metric Bolt Thread Size: Thread sizes for coarse and fine pitch thread were created using the standard sizes from ASME B1.13M. Coarse pitch threads are preferred and should be used whenever possible, as stated in ASME B1.13M.



That bracket is a 1/2" hole EDIT to clarify: it fits a 1/2" bolt, may not be exactly half inch. But every light we've have with that bracket has a LightSource Slim Claw on it, which are 1/2" bolts.



Self-Clinching fasteners provide strong load bearing male or female threads, pins and access hardware in thin steel and aluminium panels. Installation is neat and easy, simply locate the fastener into a pre-prepared (punched or drilled and reamed) hole and apply a parallel squeezing force to embed the fastener into the panel. Self-Clinching fasteners work by utilizing a special ???



Nuts and Washers. Definition: Nuts are typically used in conjunction with bolts or screws to provide anchorage. Washers are placed between bolts, screws, and nuts to disperse pressure, prevent loosening, or ???



Bolt Size or hole pattern to mount TV Please note that the Design and Specifications are subject to change without notice. Mass and Dimensions shown are approximate. 1.00 / Length determined including mounting bracket 37" to 65" 400 mm x 400 mm M6 1.00 / Length determined including mounting bracket

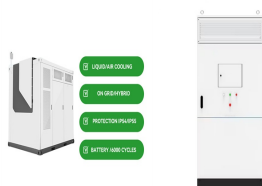
WHAT IS THE HOLE DIAMETER OF THE PHOTOVOLTAIC BRACKET NUT



Alternatively, they can be secured by side panels or brackets and the thickness of these would need to be taken into consideration when determining the internal clear dimension of the case. If you are making the case yourself the pre-made ???



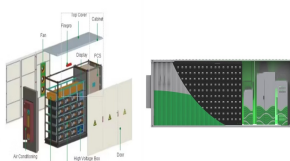
Estimating the number and size of rails, mid and end clamps, L-feet, or standoffs for your solar installation could be troublesome. This brief introduction offers insight into estimating the number of solar racking parts a project might need.



Safety Switch bracket Safety Switch for single phase inverter 3 -7.6 kW . a mounting bracket. 5. Install the mounting bracket on the wall with the flat side of the bracket is at the bottom. 6. Hang the inverter on the bracket: Align the two indentations in the inverter enclosure with the two triangular mounting tabs of the bracket, and lower the



Decreased Q-factor; Increased efficiency due to stiffer 30mm diameter crank spindles; Simplified frame manufacturing; Tolerances between the BB shell in the frame and the bearings have to be very good to prevent creaking (the major complaint with press fit BBs) and it can be harder for home mechanics to service and replace as installing bearings requires a ???



Before installing the bracket, the bracket should be assembled first. Before installation, use an angle measuring instrument to adjust the level and angle to ensure the stability and appropriate angle of the bracket. Then place the bracket into the hole and tighten the bracket nut with a wrench to ensure its stability. 4??? Installing solar panels

WHAT IS THE HOLE DIAMETER OF THE PHOTOVOLTAIC BRACKET NUT



Using the correct bolt size ensures that the bracket aligns perfectly with the VESA pattern, providing a secure fit. 4. Method 2: Measuring the Hole Size on the TV: If you can't find the information in the manual or if the manual is not readily available, you can measure the hole size on the back of the TV yourself. Take a ruler or a



RENOGY Photovoltaic Module Z-Bracket Mounting System, CA 91761 1-800-330-8678 Used to drill clearance holes for well nuts Cordless Drill in roof top. 19 Drill Bit Must be matched to the well nut's outer diameter. Recommended variety requires 3/8" bit. 20 NOTE: Mark all hole locations in this step as the panel must be removed for



Two Hole Photovoltaic Base Bracket either called Grounding Connector, is a mounting accessory for fixing and supporting solar panels. Nuts . Hex Nut Rivet Nut Cap Nut Other Nut. Washers . Anchors . Size? 1/4 ?180*100*5-U49*62*3 Material? 1/4 ?Q235B HDG Length? 1/4 ?custom Applications. Roof Installation:



JIANGSU FUTURO SOLAR Co., Ltd. is the world's leading manufacturer of photovoltaic brackets and aluminum profiles. It mainly produces various types of roof and ground solar brackets, solar aluminum frames and industrial aluminum profiles. As a large-scale professional enterprise, we integrate design, production, sales and service. We have strong comprehensive technical ???



So what is the samsung 32 inch tv wall mount screws size wall bracket mount screws size? You will need an M6 screw to mount a Samsung 32 Roku TV. These screws are mostly used to mount medium-sized Samsung TVs. 3. 65 ???

WHAT IS THE HOLE DIAMETER OF THE PHOTOVOLTAIC BRACKET NUT



U-bolts, Flange Nuts, Flat Washers and Lock Washers. Alternate each side when tightening to avoid warping U-bolts. Torque U-bolt nuts to 60 in-lbs and bracket to 25 ft-lbs. Spacing between rails should align with module manufacturer 4. SeCURE LUGS A U-Bolt 60 in-lbs Bracket 21 ft-lbs Hex Nut (84 in-lbs) Terminal Screw (20 in-lbs) Hex Nut (80 in



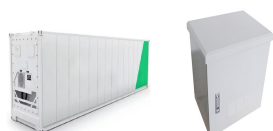
The caster shown in the photo is a good example. It has 4 slots that accept 3/8??? or 10 mm bolts nicely. Either size works as a bolt choice. Note: Because the holes are slots, washers support the nut. If the holes are not defined for the bolt size, there are lots of other considerations to select the size. Factor 2 ??? Material Thickness



According to the type of solar panels selected in this contract, confirm the number, size and opening position of the fixed installation holes on the frame of the photovoltaic cell module. 3. According to the technical plan, ???



Find the mounting holes on the back of your TV, grab a tape measure, and follow the steps below: Measure horizontally between the two top mounting holes. Measure vertically between one of the top mounting holes and one of the bottom mounting holes. Convert the distance to millimeters, and you have your VESA pattern.



1. Structural framework: This is the main support structure made of metal (often aluminum or galvanized steel), designed to hold the weight of the solar panels and withstand environmental forces such as wind, rain, and snow. 2. Mounting rails: These are horizontal beams that run along the length of the solar array, providing a uniform platform for attaching the panels to the ???