

# WHAT IS THE MAJOR OF FLYWHEEL ENERGY STORAGE TECHNOLOGY



How does a flywheel energy storage system work? Flywheel energy storage uses electric motors to drive the flywheel to rotate at a high speed so that the electrical power is transformed into mechanical power and stored, and when necessary, flywheels drive generators to generate power. The flywheel system operates in the high vacuum environment.



What is flywheel energy storage system (fess)? Flywheel Energy Storage System (FESS) can be applied from very small micro-satellites to huge power networks. A comprehensive review of FESS for hybrid vehicle, railway, wind power system, hybrid power generation system, power network, marine, space and other applications are presented in this paper.



What is the difference between a flywheel and a battery storage system? Flywheel Systems are more suited for applications that require rapid energy bursts, such as power grid stabilization, frequency regulation, and backup power for critical infrastructure. Battery Storage is typically a better choice for long-term energy storage, such as for renewable energy systems (solar or wind) or home energy storage.



What are the potential applications of flywheel technology? Flywheel technology has potential applications in energy harvesting, hybrid energy systems, and secondary functionalities apart from energy storage. Additionally, there are opportunities for new applications in these areas.



Can small applications be used instead of large flywheel energy storage systems? Small applications connected in parallel can be used instead of large flywheel energy storage systems. There are losses due to air friction and bearing in flywheel energy storage systems. These cause energy losses with self-discharge in the flywheel energy storage system.

# WHAT IS THE MAJOR OF FLYWHEEL ENERGY STORAGE TECHNOLOGY



What makes flywheel energy storage systems competitive? Flywheel Energy Storage Systems (FESSs) are still competitive for applications that need frequent charge/discharge at a large number of cycles. Flywheels also have the least environmental impact amongst the three technologies, since it contains no chemicals.



Flywheel energy storage (FES) is a technology that stores kinetic energy through rotational motion. The stored energy can be used to generate electricity when needed. Flywheels have been used for centuries, but modern ???



While batteries have been the traditional method, flywheel energy storage systems (FESS) are emerging as an innovative and potentially superior alternative, particularly in applications like time-shifting solar power. What is a ???



Flywheel energy storage consists in storing kinetic energy via the rotation of a heavy object. Find out how it works. One Major Disadvantage - Limited energy storage time of around 15 minutes, making flywheels only ???



Compressed air energy storage technology is a promising solution to the energy storage problem. It offers a high storage capacity, is a clean technology, and has a long life cycle. Flywheel energy storage systems ???

# WHAT IS THE MAJOR OF FLYWHEEL ENERGY STORAGE TECHNOLOGY



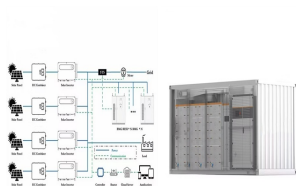
Flywheel energy storage systems (FESS) are a great way to store and use energy. They work by spinning a wheel really fast to store energy, and then slowing it down to release that energy when needed. FESS are perfect ???



In a flywheel energy storage system, electrical energy is used to spin a flywheel at incredibly high speeds. The flywheel, made of durable materials like composite carbon fiber, stores energy in the form of rotational kinetic energy. ???



Water tanks in buildings are simple examples of thermal energy storage systems. On a much grander scale, Finnish energy company Vantaa is building what it says will be the world's largest thermal energy storage ???

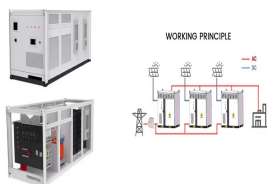


Current State and Future of Flywheel Energy Storage. Flywheel technology is evolving, with several countries, including China, leading the way in large-scale flywheel installations. In 2022, China unveiled its first self-owned ???

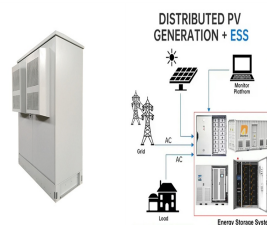


Flywheel energy storage is a promising technology for replacing conventional lead acid batteries as energy storage systems. Most modern high-speed flywheel energy storage systems (FESS) consist of a huge rotating ???

# WHAT IS THE MAJOR OF FLYWHEEL ENERGY STORAGE TECHNOLOGY



This review presents a detailed summary of the latest technologies used in flywheel energy storage systems (FESS). This paper covers the types of technologies and systems employed within FESS, the range of materials used ???



ESSs store intermittent renewable energy to create reliable micro-grids that run continuously and efficiently distribute electricity by balancing the supply and the load [1]. The ???



Energy storage can be defined as the process in which we store the energy that was produced all at once. This process helps in maintaining the balance of the supply and demand of energy. There are various examples ???