

WHAT IS THE NEW ENERGY STORAGE CAPACITY COMPENSATION MECHANISM



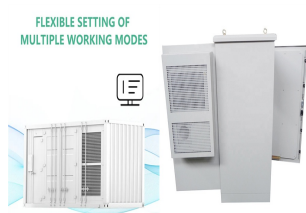
What changes have been made to the recognition of energy storage systems? This modification introduces significant changes in the recognition and compensation of energy storage systems and hybrid plants with storage capacity. Recognition of capacity for storage and energy projects Since 1982, the Chilean market has recognized capacity payment for plants that contribute adequacy to the electrical system.



How does the CNE regulate storage in capacity payment? The CNE (National Energy Commission) regulates the majority of the parameters used to calculate the capacity payments through successive short-term node price decrees and the technical standards issued by that body. Modifications introduced by DS 70 for recognizing storage in capacity payment The main modifications are as follows:



What is the capacity payment mechanism? The capacity payment mechanism, regulated by DS 62 and unchanged by the new regulation, establishes that this is determined by each plant's contribution to system reliability, its availability during periods of peak demand, and the general needs of the electrical system to maintain an adequate reserve margin.



How is the capacity payment determined? The capacity payment for all generating units, including storage, is determined based on the most efficient technology capable of providing energy during peak demand, generally represented by diesel units due to their ability to rapidly increase production and meet demand.

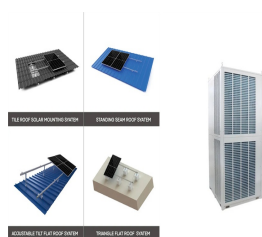


What is a renewable plant with storage capacity (CRCA)? Renewable Plants with Storage Capacity (CRCA): Renewable generation plants that use variable primary resources, composed of a generation component and a storage component, both connected to the same point of connection to the electrical system.

WHAT IS THE NEW ENERGY STORAGE CAPACITY COMPENSATION MECHANISM



The main steps of calculating the compensation standard include: first, fixed cost calculation, based on the industry statistics of historical data information of this type of unit, the average ???



Capacity schemes are generally divided in three instruments, the last one being the most complex: capacity payment : providers receive a fixed compensation; strategic storage : grid managers must create an energy storage to cover risks ???



? 1/4 ? ,, ???



With the rapid advancement of new power system construction, the proportion of renewable energy in our country is continuously increasing, thereby posing a greater challenge to the ???



„???????,15000????7000 ???

WHAT IS THE NEW ENERGY STORAGE CAPACITY COMPENSATION MECHANISM



The existing peak shaving and demand response mechanism design provides energy storage charging and discharging compensation which can increase energy storage revenue. However, under the existing peak and ???



,,, ??? ???