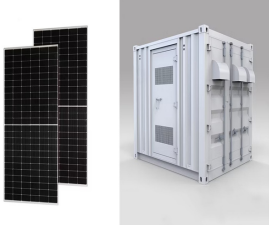


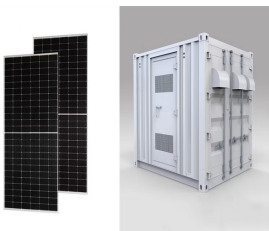
WHAT IS THE PHOTOVOLTAIC PANEL SUPPORT



What are the components of a solar panel? The most crucial component of the solar panels is the photovoltaic (PV) cells responsible for producing electricity from solar radiation. The rest of the elements that are part of a solar panel protect and give firmness and functionality to the whole. The structure of a solar panel is divided into different parts or components.



What are the components of a solar PV module? A solar PV module, or solar panel, is composed of eight primary components, each explained below: 1. Solar Cells Solar cells serve as the fundamental building blocks of solar panels. Numerous solar cells are combined to create a single solar panel.



What is a solar PV system? Solar PV systems ??? a collection of solar panels ??? turn sunlight into electricity through the ??? solar cells ??? they contain. These cells are made from thin layers of a ??? semiconductor ??? material (traditionally silicon) between layers of glass.

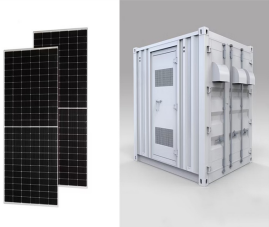


How does a solar PV system work? Solar PV panels ??? convert sunlight into electricity. Inverter ??? this might be fitted in the loft and converts the electricity from the panels into the form of electricity which is used in the home. Generation meter ??? records the amount of electricity generated by the solar PV system.



How does a solar panel work? A photovoltaic (PV) panel, commonly called a solar panel, contains PV cells that absorb the sun ??? s light and convert solar energy into electricity. These cells, made of a semiconductor that transmits energy (such as silicon), are strung together to create a module. A typical rooftop solar panel has 30 modules.

WHAT IS THE PHOTOVOLTAIC PANEL SUPPORT



What are photovoltaic cells? Photovoltaic cells are the most critical part of the solar panel structure of a solar system. These are semiconductor devices capable of generating a DC electrical current from the impact of solar radiation.



Solar panel systems do precisely that. Solar panels capture sunlight through a process known as the photovoltaic effect (this is why they're also called photovoltaics or PVs). Technically speaking, the photovoltaic effect is a property of specific materials called semiconductors (nonmetals with conductive properties) that create an electric current when ???



6 ? Solar panel grants like the ECO4 scheme can help consumers get free solar panels in the UK. Currently, there is 0% VAT on solar panels, batteries, and other renewable energy products, allowing for a discount of up to ?2,850 on the purchase of a 4kW system.; The Smart Export Guarantee potentially allows consumers to earn money by giving energy back to the ???



What is solar panel mounting and racking? Solar panel mounts and racks are equipment that secures solar panels in place. Mounting allows the panels to be adjusted for optimal tilt, which can be based on latitude, seasons, or even time ???



A ground mounted solar panel system is a system of solar panels that are mounted on the ground rather than on the roof of buildings. Photovoltaic solar panels absorb sunlight as a source of energy to generate electricity. A photovoltaic (PV) module is a packaged, and connected photovoltaic solar cells assembled in an array of various sizes.

WHAT IS THE PHOTOVOLTAIC PANEL SUPPORT



The sun provides an abundant source of clean, renewable energy. This can be converted into electricity using solar photovoltaic panels, known as "solar PV", installed on your roof. This electricity can power your home, save you money, ???



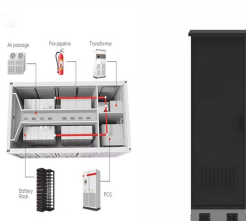
OverviewMountingOrientation and inclinationShadePV FencingSound barriersSee also



What are the Main Solar Panel Components? A solar PV module, or solar panel, is composed of eight primary components, each explained below:
1. Solar Cells. Solar cells serve as the fundamental building blocks of ???



Solar panels, also called PV panels, are combined into arrays in a PV system. PV systems can also be installed in grid-connected or off-grid (stand-alone) configurations. The basic components of these two configurations of PV systems include solar panels, combiner boxes, inverters, optimizers, and disconnects.



Any implementation of a sustainable photovoltaic solar energy system implies the optimization of the resources to be used. Therefore, it is the basis for the design and assembly of solar installations to optimize renewable energy production.. To achieve optimal conversion of solar energy, it is essential to know the solar path, the profile of the needs, and the ???

WHAT IS THE PHOTOVOLTAIC PANEL SUPPORT



Solar panel technology advances include greater solar cell efficiency and the use of new and more abundant solar panel materials. top of page. Solar Sign Up. Solar Log In. Therefore, 2024 is expected to see more favorable incentives and support programs for deploying solar-plus-storage systems, promoting widespread adoption in the clean



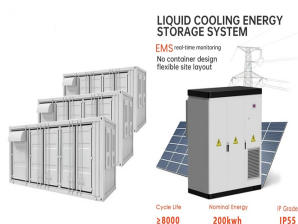
Solar Panel Mounts . Hybrid Inverters . Hybrid Inverters . 1 / of 6. I reviewed multiple different options and because of their customer support, and very informative online videos they made choosing them easy. I bought a 7.68kw solar system from them and I installed it myself. All items showed up in perfect condition.



Under typical UK conditions, 1m 2 of PV panel will produce around 100kWh electricity per year, so it would take around 2.5 years to "pay back" the energy cost of the panel. PV panels have an expected life of least 25 to 30 years, so even under UK conditions a PV panel will generate many times more energy than was needed to manufacture it.



The first part is the power optimizer, which handles DC to DC and optimizes or conditions the solar panel's power. There is one power optimizer per solar panel, and they keep the flow of energy equal. For example, with a standard string inverter, if one solar panel produces less energy, all the solar panels in that string will produce less energy.



"All zero-carbon technologies should have access to these support measures, including solar PV, solar thermal, energy storage and zero-carbon heat technologies." 4. The Green Deal You'll notice two distinctions ???

WHAT IS THE PHOTOVOLTAIC PANEL SUPPORT



A solar panel is a device that converts sunlight into electricity by using photovoltaic (PV) cells. Solar panels also use metal frames consisting of racking components, brackets, reflector shapes, and troughs to better support the panel structure. [citation needed]



The solar panels that you see on power stations and satellites are also called photovoltaic (PV) panels, or photovoltaic cells, which as the name implies (photo meaning "light" and voltaic meaning "electricity"), convert sunlight directly into electricity. A module is a group of panels connected electrically and packaged into a frame (more commonly known as a solar ???



In roof solar, or integrated solar panels are the ideal solution for new builds or anyone looking to re-roof there home. Many customers opt for an in-roof system because of the sleeker aesthetics. As the solar panel sit snugs within a tray, there is no space for birds to nest under and the panels appear flush with the rest of the roof. However, this does result in less ???

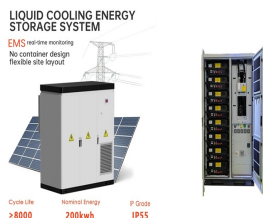


The support structures that are built to support PV modules on a roof or in a field are commonly referred to as racking systems. The manufacture of PV racking systems varies significantly depending on where the installation will occur. This hardware converts direct current (DC) electricity, which is what a solar panel generates, to



To select the right solar panel size, it is important to know the standard solar panel sizes available on the market. Every solar panel consists of solar cells, which are typically 6-by-6 inches.

WHAT IS THE PHOTOVOLTAIC PANEL SUPPORT



A photovoltaic (PV) panel, commonly called a solar panel, contains PV cells that absorb the sun's light and convert solar energy into electricity. These cells, made of a semiconductor that transmits energy (such as silicon), are strung together ???



The main components of a solar photovoltaic (PV) system are: Solar PV panels ??? convert sunlight into electricity. Inverter ??? this might be fitted in the loft and converts the electricity from the ???



Ensure your support structure can handle the weight. 8. Balance of System (BOS): Contains components like load breakers, fuses, and combiner boxes. Solar Panel Batteries: Companies like Tesla and LG Chem manufacture solar panel batteries, offering options for energy storage.



A Solar panels (also known as "PV panels") is a device that converts light from the sun, which is composed of particles of energy called "photons", into electricity that can be used to power electrical loads. Solar panels can be used for a wide variety of applications including remote power systems for cabins, telecommunications equipment, remote sensing, and of course for the ???

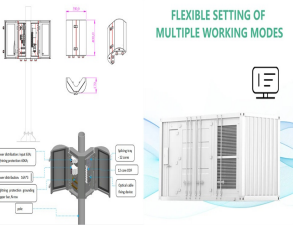


What is photovoltaic (PV) technology and how does it work? PV materials and devices convert sunlight into electrical energy. A single PV device is known as a cell. An individual PV cell is usually small, typically producing about 1 or 2 ???

WHAT IS THE PHOTOVOLTAIC PANEL SUPPORT



Support frame. The support frame is the part that gives the mechanical strength. For example, the support frame of a solar panel allows its insertion in structures that will group modules. The solar panel's increase in ???



Solar panel angle. Calculating the Optimal solar panel Angle. As a rule of thumb, solar panels should be more vertical during winter to gain most of the low winter sun, and more tilted during summer to maximize the output. Here are two simple methods for calculating approximate solar panel angle according to your latitude. Calculation method one



The Photovoltaic Panel. In a system for generating electricity from the sun, the key element is the photovoltaic panel, since it is the one that physically converts solar energy into electricity; the rest is pure electronics, ???



Use our solar panel calculator to get an idea of how much you could save by installing a solar photovoltaic (PV) system at home. Use the calculator . Based on the information you provide, the solar panel calculator will estimate: What size solar panel system is right for you. How much you could save on your electricity bills.

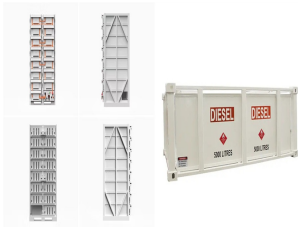


In the photovoltaic (PV) solar power plant projects, PV solar panel (SP) support structure is one of the main elements and limited numerical studies exist on PVSP ground mounting steel frames to

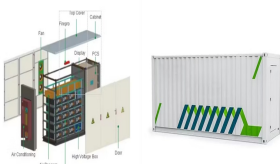
WHAT IS THE PHOTOVOLTAIC PANEL SUPPORT



The tracking photovoltaic support system consisted of 10 pillars (including 1 drive pillar), one axis bar, 11 shaft rods, 52 photovoltaic panels, 54 photovoltaic support purlins, driving devices and 9 sliding bearings, and also includes the connection between the frame and its axis bar. Total length was 60.49 m, as shown in Fig. 8.



Photovoltaic modules: a photovoltaic system captures the energy radiated by the sun thanks to the use of special components called photovoltaic modules that is able to produce electricity when hit by sunlight. Support structures of the modules: these structures support the modules by fixing them to the roof the case of flat roofing, support structures exist that can also modify the



Solar panels are designed to absorb light ??? as the more light a panel absorbs, the more power it will generate ??? so glint and glare from them are not a problem. The solar industry has developed high-tech, anti-reflective ???



Solar panel mounts can be completely customized to facilitate the effective positioning of the attached solar panel array to meet these parameters. When looking at residential solar panel systems, the roof layout and roof ???