

# WHAT IS THE PRINCIPLE OF MUSCLE ENERGY STORAGE



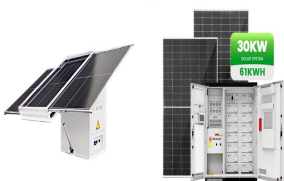
Why is elastic energy storage important in muscle and tendon? Elastic energy storage in muscle and tendon is important in at least three contexts (i) metabolic energy savings derived from reduced muscle work, (ii) amplification of muscle-tendon power during jumping, and (iii) stabilization of muscle-tendon force transmission for control of movement.



What is muscle and tendon energy storage? Muscle and tendon energy storage represents the strain energy that is stored within a muscle-tendon complex as a muscle and tendon are stretched by the force developed by the muscle when it contracts. This energy may be subsequently recovered elastically when the muscle relaxes.



Is ATP the only energy storage used in muscles? Thus, while ATP is the actual fuel that powers myosin to create the muscle force, the cell needs to keep the ATP concentration constant in order to avoid negative impacts on other metabolic processes. Therefore glycogen is the actual energy storage. However glycogen is not the only energy storage used in muscles.



Why is elastic energy stored within a muscle when it contracts? Elastic energy that can be stored within a muscle when it contracts is generally associated with its passive force-length properties, because these depend on the amount of non-contractile connective tissue within the muscle.



How is energy stored in biological materials? For pure elastic elements, all of the energy that is stored during loading is returned during unloading. However, most biological materials are non-linearly elastic and exhibit some degree of inelastic or viscous energy dissipation, which is ultimately lost as heat (Fig. 1c). Muscle and Tendon Energy Storage. Figure 1

# WHAT IS THE PRINCIPLE OF MUSCLE ENERGY STORAGE



How does muscle-tendon force affect strain energy storage?

Consequently, for a given muscle-tendon force, strain energy storage per unit mass (or volume) of tendon varies inversely in proportion to the square of the tendon's area ( $1/A^2$ ).



Muscle fatigue, it seems, can refer to a motor deficit, a perception or a decline in mental function, it can describe the gradual decrease in the force capacity of muscle or the endpoint of a sustained activity, and it can be measured as a reduction in muscle force, a change in electromyographic activity or an exhaustion of contractile function.



energy. The digestive tract needs \_\_\_\_\_, which provides the bulk against which the muscles of the colon can work. The stomach's main function is the digestion of what nutrient? protein. The first principle of diet planning is that the foods we choose must provide energy and the essential nutrients, including: water. Which of the following



Motor Unit: Consists of a single motor neuron and all the muscle fibers it innervates. Muscle Fiber Types: Type I (Slow-Twitch):

Endurance-oriented, fatigue-resistant, and used for low-force, sustained activities like walking or maintaining posture. Type IIa (Fast-Twitch A):

Intermediate fibers that balance power and endurance, suitable for activities like moderate ???



Study with Quizlet and memorize flashcards containing terms like 1. The maximal amount of force that a muscle or muscle group can generate is a definition of a. muscular strength b. muscular endurance c. cardiorespiratory endurance d. muscular power, 2. The rate of doing work is defined as a. muscular strength b. muscular endurance c. cardiorespiratory endurance d. muscular ???

# WHAT IS THE PRINCIPLE OF MUSCLE ENERGY STORAGE



Muscle Storage Glycogen: The spherical glycogen molecules are located in three distinct subcellular compartments within skeletal muscle: intermyofibrillar glycogen, which accounts for approximately three-quarters of total glycogen and is situated near mitochondria between the myofibrils.; subsarcolemmal glycogen, which accounts for ?? 1/4 5???15% of all glycogen, and



Muscle contraction begins when the nervous system generates a signal. The signal, an impulse called an action potential, travels through a type of nerve cell called a motor neuron. The neuromuscular junction is the name of the place where the motor neuron reaches a muscle cell. Skeletal muscle tissue is composed of cells called muscle fibers.



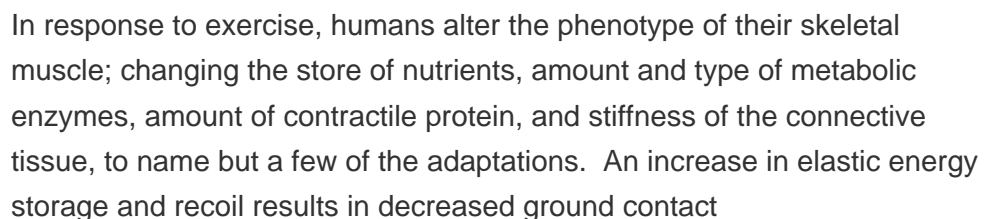
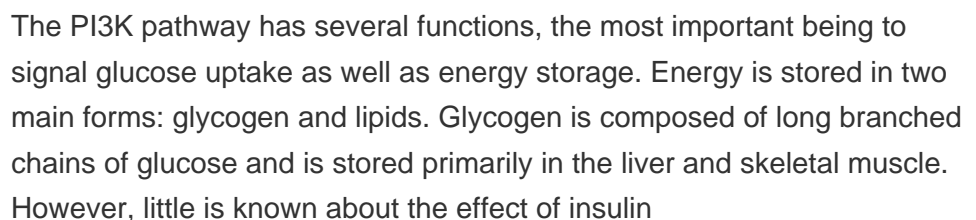
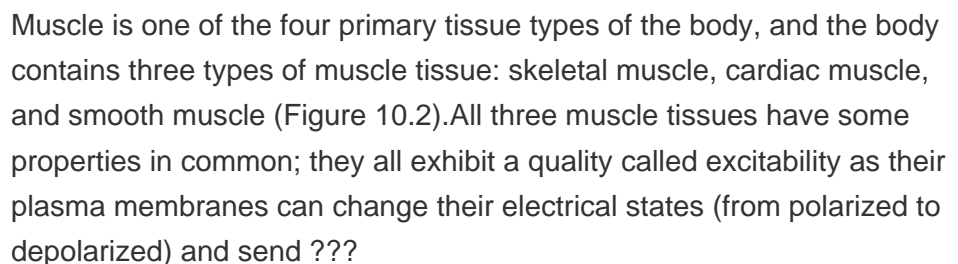
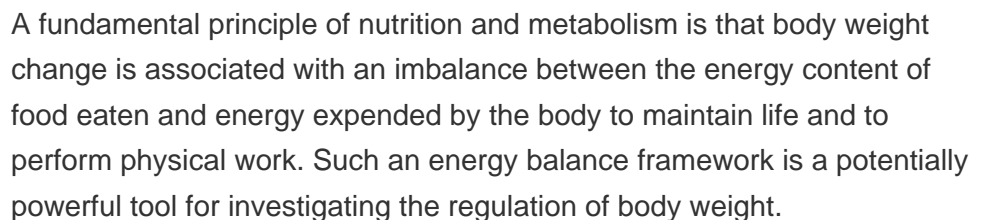
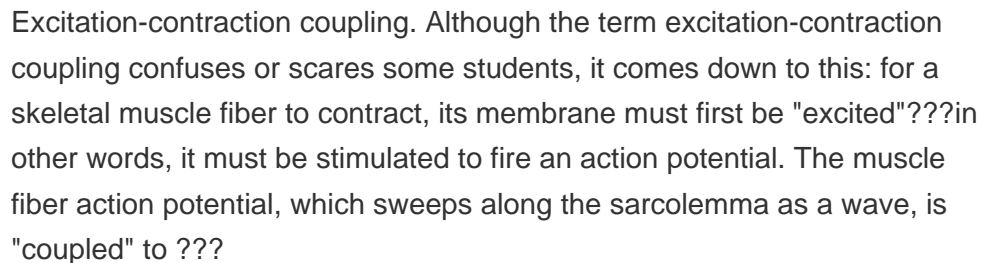
The study of carbohydrate (CHO) metabolism in relation to sport and exercise is a field of investigation that is now over 100 years old. Indeed, almost a century ago, Krogh and Lindhard (1920) reported the efficiency of CHO as a fuel source during exercise and also demonstrated that fatigue occurs earlier when subjects consume a high-fat diet (as compared ???



Energy is stored in the body in various forms of carbohydrates, fats, and proteins as well as in the molecule creatine phosphate. Carbohydrate and fat are the primary sources of energy, with protein contributing a minimal amount under normal conditions. Adenosine triphosphate (ATP) is the body's usable form of energy.



This potential energy is converted into kinetic energy in the body that drives many body functions ranging from muscle and nerve function to driving the synthesis of body protein for growth. After potential energy is released to provide kinetic energy, ???



# WHAT IS THE PRINCIPLE OF MUSCLE ENERGY STORAGE



Study with Quizlet and memorize flashcards containing terms like Chemical energy is one form of \_\_\_\_\_. Three important molecules in the human body function primarily in energy storage. The first type is involved with long term energy storage in adipose tissue and is known as \_\_\_\_\_. The second type, \_\_\_\_\_, is stored in the liver and muscle tissue in the form of glycogen. \_\_\_\_\_ is ???



Muscle cells may consumer energy to build long muscle proteins from small amino acid molecules. Molecules can be modified and transported around the cell or may be distributed to the entire organism. Just as energy is required to both build and demolish a building, energy is required for both the synthesis and breakdown of molecules.



This triggers the release of calcium ions ( $\text{Ca}^{++}$ ) from storage in the sarcoplasmic reticulum (SR). In a resting muscle, excess ATP transfers its energy to creatine, producing ADP and creatine phosphate. This acts as an energy reserve that can be used to quickly create more ATP. When the muscle starts to contract and needs energy, creatine



Multiple neuronal and hormonal signals oppose the state of weight reduction and predispose toward positive energy storage. skeletal muscle, and brain to be used as energy substrates. Zande HD. Universal energy principle of biological systems and the unity of bioenergetics. Proc Natl Acad Sci U S A. 1981;78(9):5344???.



Musculoskeletal system The musculoskeletal system (locomotor system) is a human body system that provides our body with movement, stability, shape, and support is subdivided into two broad systems: Muscular system, which includes all types of muscles in the body. Skeletal muscles, in particular, are the ones that act on the body joints to produce ???

# WHAT IS THE PRINCIPLE OF MUSCLE ENERGY STORAGE



The regulation of glycogenin formation is not well understood, but the cellular content of glycogenin influences the rate and extent of glycogen storage. 43, 44 Glycogen particles have been categorized into 2 forms based upon their size: 1) proglycogen and 2) macroglycogen. 43???47 Proglycogen particles comprise roughly 15% of total glycogen content, ???



Regardless of its morphology or type, muscle tissue is composed of specialized cells known as muscle cells or myocytes (myo- [muscle, Greek = mys]), commonly referred to as muscle fibers (all of these terms are interchangeable); this is due to their extensive length and appearance. Myocytes are characterized by protein filaments known as actin and ???



The energy to do work comes from breaking a bond from this molecule). In terms of calories, 1 gram of carbohydrate has represents kcal/g of energy, less than half of what fat contains. Fats Can Be Store In Less Space Than Glucose. Besides the large energy difference in energy, fat molecules take up less space to store in the body than glucose.



Therefore glycogen is the actual energy storage. However glycogen is not the only energy storage used in muscles. The muscle actually uses a quite clever energy management system: During the first 2-7 seconds it uses phosphocreatine (or creatine phosphate) to quickly replace used ATP (as mentioned in the answer by David). This means a ???



As organs that contain cells that can contract, muscles can generate force and movement. Skeletal muscle works in conjunction with the bones of the skeleton to create body movements. Additionally, it is also ???



# WHAT IS THE PRINCIPLE OF MUSCLE ENERGY STORAGE



The general principle, that the storage and release of elastic energy alters the timing of muscle work relative to the timing of motion, may be an important feature in many rapid movements. The isometric contractions were meant to mimic the conditions of "ideal" elastic energy storage, where muscle must only produce force, while the



Match the energy storage form on the left with its main storage location on the right (you will not need all choices available): 1. glycogen a. skeletal muscle 2. triglycerides b. brain 3. proteins c. adipose tissue d. liver



The isometric contractions were meant to mimic the conditions of "ideal" elastic energy storage, where muscle must only produce force, while the lengthening???shortening contraction ???



As organs that contain cells that can contract, muscles can generate force and movement. Skeletal muscle works in conjunction with the bones of the skeleton to create body movements. Additionally, it is also associated with the diaphragmatic, esophageal, and eye muscles. Thus, skeletal muscle serves a variety of purposes, including moving of the body, ???



The First Law of Thermodynamics. The Principle of Conservation of Energy states that energy cannot be created or destroyed. Therefore, if the body does useful work to transfer mechanical energy to its surroundings (), or transfer thermal energy to the environment as heat, then that energy must have come out of the body's internal energy. We observe this in ???