

WHAT IS THE ROLE OF BASE STATION ENERGY STORAGE BATTERIES



Why is a telecom base station battery important? To provide continuous power to the site, the telecom base station battery is widely used. They provide backup power to the cell site and thus are an important part of any telecom system. Although the telecom base station is expensive, it helps in the smooth running of your device.



What is a battery energy storage system? A battery energy storage system (BESS) is an electrochemical device that charges from the grid or a power plant and then discharges that energy to provide electricity or other grid services when needed.



What is battery storage and why is it important? Battery storage is one of several technology options that can enhance power system flexibility and enable high levels of renewable energy integration.



How to extend the service life of a telecom base station battery? Here are some tips on how you can extend the service life of your telecom base station battery: Increased temperature than the required range can highly affect the battery life. It is always recommended to charge your battery to a certain limit so its efficiency does not disturb.



Should a base station battery be cleaned or uncleaned? A cleaned and fully optimized base station battery runs longer than an uncleaned battery. Therefore, battery manufacturers advise keeping the battery clean so it can remain safe from acidic damage. If you do not check your battery thoroughly, it can lose its functionality and can get worse with time.

WHAT IS THE ROLE OF BASE STATION ENERGY STORAGE BATTERIES



What is the cycle life of a battery storage system? Cycle life/lifetime is the amount of time or cycles a battery storage system can provide regular charging and discharging before failure or significant degradation. For example, a battery with 1 MW of power capacity and 4 MWh of usable energy capacity will have a storage duration of four hours.



Telecom base station battery is a kind of energy storage equipment dedicatedly designed to provide backup power for telecom base stations, applied to supply continuous and stable power to base station equipment when the utility power ???



Focusing on electrification and energy storage can send a strong message and position your organization as a leader in terms of commitment to sustainability. Clean Energy Integration. Battery storage opens the door to ???



Benefits of Battery Energy Storage Systems. Battery Energy Storage Systems offer a wide array of benefits, making them a powerful tool for both personal and large-scale use: Enhanced Reliability: By storing energy ???



The idea of base stations transforming into mini power stations is no longer just a futuristic concept. With the growing adoption of energy storage cabinets and renewable energy ???

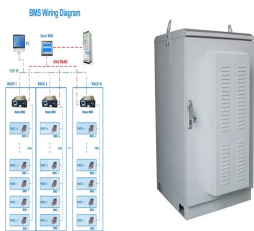
WHAT IS THE ROLE OF BASE STATION ENERGY STORAGE BATTERIES



In today's world, battery energy storage has a far broader - and more crucial - role to play. By connecting larger-scale battery energy storage to on-site clean technology such as solar PV and the grid, it is possible to vastly ???



Part 1: What is Telecom Base Station Battery? To provide continuous power to the site, the telecom base station battery is widely used. They provide backup power to the cell site and thus are an important part of any telecom system. ???



That's why natural gas, when its supply is constant, continues to play a role when firm power is needed above the baseload demand. As battery energy storage system costs decrease over time, solar and wind coupled with ???



In a paper recently published in Applied Energy, researchers from MIT and Princeton University examine battery storage to determine the key drivers that impact its economic value, how that value might change with ???



Let's look at some of the different forms of battery storage available today and the role they're playing in the energy transition. such as in the telecom industry for data centers and base stations. Advances in technology ???

WHAT IS THE ROLE OF BASE STATION ENERGY STORAGE BATTERIES



A Battery Energy Storage System (BESS) is a technology designed to store electrical energy for use at a later time. It typically comprises:
Batteries: Commonly lithium-ion, but other types like flow batteries, sodium-sulfur, and ???



Electricity storage systems play a central role in this process. Battery energy storage systems (BESS) offer sustainable and cost-effective solutions to compensate for the disadvantages of renewable energies. These systems ???



Battery storage, or battery energy storage systems (BESS), are devices that enable energy from renewables, like solar and wind, to be stored and then released when the power is needed most.. Lithium-ion batteries, which ???



Telecom batteries play a vital role in storing excess energy generated by renewable energy sources, ensuring that telecom base stations are continuously powered even in the absence of solar or wind energy.

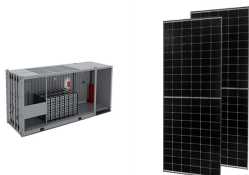


This article provides a comprehensive guide on battery storage power station (also known as energy storage power stations). These facilities play a crucial role in modern power grids by storing electrical energy for later use. ???

WHAT IS THE ROLE OF BASE STATION ENERGY STORAGE BATTERIES



You know, 5G communication base stations with high energy consumption, showing a trend of miniaturization and lightening, the need for higher energy density energy storage system. The LiFePO₄ battery has ???



A battery energy storage system (BESS) plays a vital role in balancing renewable energy's intermittency during peaks of demand for electricity. It stores excess energy generated by sources such as solar power and wind during periods of ???



The speed of 5G layout is accelerated, and the demand for base station energy storage batteries exceeds 161GWh, of which 14.4GWh is required in 2020. Recently, the Political Bureau of the CPC Central Committee and the Ministry ???



Intelligent energy storage lithium battery can effectively protect the base station battery in the event of the accidental short circuit, lightning shock, and other conditions, timely start the protection system to provide a safe and ???



Definition. Telecom base station battery is a kind of energy storage equipment dedicatedly designed to provide backup power for telecom base stations, applied to supply continuous and stable power to base station equipment when the ???

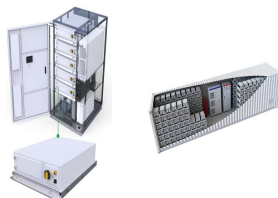
WHAT IS THE ROLE OF BASE STATION ENERGY STORAGE BATTERIES

114KWh ESS

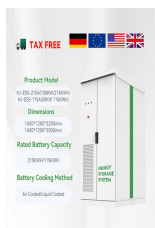


ISO 9001 ISO 14001 CE UN38.3 UN38.3

Battery Energy Storage Systems (BESS) come in various sizes and shapes, ranging from smaller on-site batteries that respond to peak demand, increase grid resilience, and provide backup power when necessary to larger ???



Imagine harnessing the full potential of renewable energy, no matter the weather or time of day. Battery Energy Storage Systems (BESS) make that possible by storing excess energy from solar and wind for later use. As ???



By installing battery energy storage system, renewable energy can be used more effectively because it is a backup power source, less reliant on the grid, has a smaller carbon footprint, and enjoys long-term financial benefits. Overall, ???