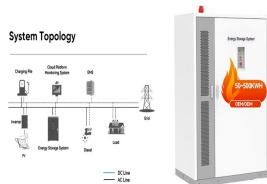


WHAT PROFESSION IS REQUIRED FOR ENERGY STORAGE ON-SITE COMMISSIONING



During the Commissioning Process Stage 3, the commissioning works and activities are completed alongside the general onsite building services installations and inspections. The focus is on closing out the commissioning ???



The Industrial and Commercial (C& I) Energy Storage: Construction, Commissioning, and O& M Guide provides a detailed overview of the processes involved in building, commissioning, and maintaining energy ???



Commissioning: After the installation and connection of an ESS to the distribution system, commissioning is required to ensure successful integration. The ESIC Energy Storage Commissioning Guide provides details ???

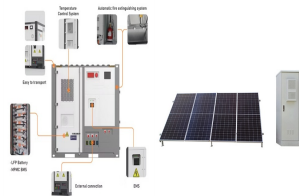


Communicate with the commissioning team and relevant stakeholders using the interactive Heads Up feature. Track progress of commissioning projects with insights from the analytics dashboard. Generate ???

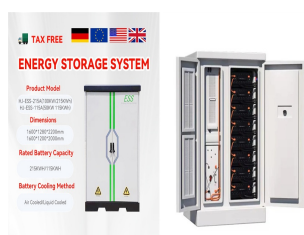


On-site testing consists of pre-commissioning and commissioning activities. On-site testing is also called Site Acceptance Testing (SAT) or Site Integration Testing (SIT). Online Commissioning ??? Testing that is conducted ???

WHAT PROFESSION IS REQUIRED FOR ENERGY STORAGE ON-SITE COMMISSIONING



Energy storage systems (ESS) store energy in batteries until needed. These systems capture generated energy (often paired with renewable sources such as wind or solar) and supply it to end users during off hours. The ???



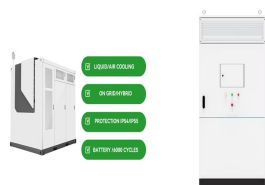
Pre-commissioning activities are more focused on physical and mechanical checks and rectifications. Commissioning activities are more focused on functional and operational tests and adjustments. Pre-commissioning acts as ???



On completion of this qualification learners may be eligible to enrol on Level 3 Award in the Installation and Maintenance of Small-Scale Solar Photovoltaic Systems and/or Level 3 Award ???



???? To read more about Roles and Responsibilities and who does what within the Commissioning Process, see our article | THE COMMISSIONING PROCESS | Explained. ???(C) Overview of "Testing" Testing refers to the process of ???



The pre-construction checks and preparations phase is really the cornerstone of the commissioning process. Construction commissioning software can make this phase easier to work through, helping the CxA and Cx team quickly and ???

WHAT PROFESSION IS REQUIRED FOR ENERGY STORAGE ON-SITE COMMISSIONING



A key technology in managing this gap between generation and demand are Battery Energy Storage Sites (BESS). If the connection is near your land but not on it, a third party agreement may be required, adding ???



As a commissioning engineer, you will also be involved in many different aspects of a project across a range of sectors including life sciences and energy management . You will likely have to communicate with contractors, other ???



Commissioning lead; Site and project managers; required fields, and other benefits of electronic documents. Offline access to documents and forms Access permissions based on the role and needs of each member of the ???



Project Statement. Site commissioning???the process of establishing and then field-verifying performance goals???is a mechanism for proving that investment in constructed landscapes is environmentally, socially, and ???