

# WHERE DOES THE HOMETOWN OF WIND POWER GENERATE ELECTRICITY



What is wind power & how does it work? The Science Behind Wind Power  
Wind turbines are one of the leading technologies in the renewable energy sector. They generate electricity by capturing the kinetic energy of the wind and converting it into mechanical power, which is then transformed into electrical energy.



How do wind farms generate electricity? Wind farms, which group multiple turbines, can generate large amounts of electricity to power entire communities. How do wind turbines convert wind into electricity? Wind turbines capture wind energy with their blades, which rotate and drive a generator that converts mechanical energy into electrical energy. Why do wind turbines have three blades?



How do scientists use wind energy to generate electricity? Scientists and engineers are using energy from the wind to generate electricity. Wind energy, or wind power, is created using a wind turbine. As renewable energy technology continues to advance and grow in popularity, wind farms like this one have become an increasingly common sight along hills, fields, or even offshore in the ocean.



How does a wind turbine work? Every day, wind turbines capture the wind's power and convert it into electricity. It's a fairly simple process: When the wind blows the turbine's blades spin, capturing energy. This energy is then sent through a gearbox to a generator, which converts it into electricity for the grid with a special device called an inverter.



Where does wind power come from? Since 2010, more than half of all new wind power was added outside the traditional markets of Europe and North America, mainly driven by the continuing boom in China and India. China alone had over 40% of the world's capacity by 2022. Wind power is used on a commercial basis in more than half of all the countries of the world.

# WHERE DOES THE HOMETOWN OF WIND POWER GENERATE ELECTRICITY



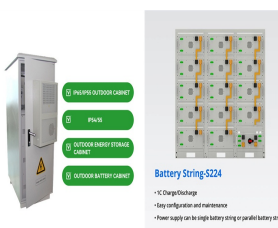
How does wind energy produce jobs? The wind energy sector can also produce jobs during the construction and operating phase. Jobs include the manufacturing of wind turbines and the construction process, which includes transporting, installing, and then maintaining the turbines. An estimated 1.25 million people were employed in wind power in 2020.



The magical science of power plants. A single large power plant can generate enough electricity (about 2 gigawatts, 2,000 megawatts, or 2,000,000,000 watts) to supply a couple of hundred thousand homes, and ???



The UK government's British energy security strategy sets ambitions for 50GW of offshore wind power generation ??? enough energy to power every home in the country ??? by 2030. However, as wind power can be ???



The worldwide total cumulative installed electricity generation capacity from wind power has increased rapidly since the start of the third millennium, and as of the end of 2022, it amounts to almost 900 GW. Since 2010, more than half of all new wind power was added outside the traditional markets of Europe and North America, mainly driven by the continuing boom in China and India. China alone had over 40% of the world's capacity by 2022.



By 2014, the wind industry in the United States could generate more power at a lower cost by utilising more giant wind turbines with longer blades to capture faster winds at higher elevations. This created new opportunities, and in Indiana, Michigan, and Ohio, the cost of power from wind turbines 300 to 400 feet (90 to 120 metres) above ground competed with ???

# WHERE DOES THE HOMETOWN OF WIND POWER GENERATE ELECTRICITY



Just because a wind turbine has a capacity rating of 1.5 megawatts, that doesn't mean it will produce that much power in practice. Wind turbines commonly produce considerably less than rated capacity, which is the maximum amount ???



Nuclear power plants. In nuclear power plants, nuclear reactions release energy in the form of heat, which is then used to produce steam from water. The steam drives a turbine connected to an electric generator, converting the mechanical energy into electricity. Currently, nuclear power plants are powered by fission reactions (splitting atoms), but scientists are working hard to ???



Photo: The generator on a wind turbine sits just behind the rotor blades. (It's the cylinder on the extreme right). Photo by Joe Smith courtesy of NREL (National Renewable Energy Laboratory). How much power does a generator make? Generators are rated in watts (a measurement of power that indicates how much energy is made each second).



Added July 1, 2021: Reader Bill R. writes, "One thing you didn't mention, and it is probably significant, is that as the energy mix tilts in favor of renewable energy over time, the energy mix used to manufacture wind turbines (and PV cells & panels) will also see a reduction in carbon intensity, resulting in an even smaller carbon footprint. There will be exceptions ??? ???



Wind power is a form of energy conversion in which turbines convert the kinetic energy of wind into mechanical or electrical energy that can be used for power. Wind power is considered a form of renewable energy. ???

# WHERE DOES THE HOMETOWN OF WIND POWER GENERATE ELECTRICITY



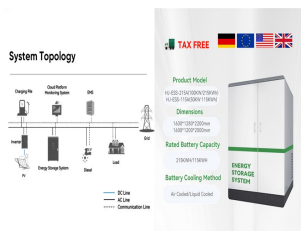
Hydropower plants use the energy of falling water to turn a turbine, while wind power plants use wind energy to turn turbines. Solar power plants use the energy of sunlight to generate electrical power through solar panels, and geothermal power plants use the earth's natural heat to produce electrical power. These renewable energy sources are



There are two general types of wind turbines: horizontal axis (the most common) and vertical-axis turbines. Wind turbines were the source of about 10% of U.S. electricity generation in 2022. Ocean thermal energy conversion (OTEC) systems use a temperature difference between ocean water at different depths to power a turbine to produce ???



Wind farms are areas where a number of wind turbines are grouped together, providing a larger total energy source. As of 2018 the largest wind farm in the world was the Jiuquan Wind Power Base, an array of more than 7,000 wind turbines in China's Gansu province that produces more than 6,000 megawatts of power. The London Array, one of the world's ???



The simplest possible wind-energy turbine consists of three crucial parts: Rotor blades - The blades are basically the sails of the system; in their simplest form, they act as barriers to the wind (more modern blade designs go beyond the ???)



How does a turbine generate electricity? A turbine, like the ones in a wind farm, is a machine that spins around in a moving fluid (liquid or gas) and catches some of the energy passing by. All sorts of machines use turbines, from jet engines to hydroelectric power plants and from diesel railroad locomotives to windmills. Even a child's toy windmill is a simple form of ???

# WHERE DOES THE HOMETOWN OF WIND POWER GENERATE ELECTRICITY



Overview Wind energy resources Wind farms Wind power capacity and production Economics Small-scale wind power Impact on environment and landscape Politics



Wind turbines have generated more electricity than gas for the first time in the UK. In the first three months of this year a third of the country's electricity came from wind farms, research from



Wind turbines are one of the leading technologies in the renewable energy sector. They generate electricity by capturing the kinetic energy of the wind and converting it into mechanical power, which is then transformed ???



How wind turbines work. Wind turbines use blades to collect the wind's kinetic energy. Wind flows over the blades creating lift (similar to the effect on airplane wings), which causes the blades to turn. The blades are connected to a drive shaft that turns an electric generator, which produces (generates) electricity.

## APPLICATION SCENARIOS



While solar power relies on sunlight, wind power uses wind speed to generate electricity. Solar power tends to generate power only during the day, while wind turbines operate 24/7, depending on the wind speed. Another factor to consider is the land requirements. Generating the same amount of electricity, wind power requires less land than solar

# WHERE DOES THE HOMETOWN OF WIND POWER GENERATE ELECTRICITY



- TELECOM CABINET
- BRAND NEW ORIGINAL
- HIGH EFFICIENCY

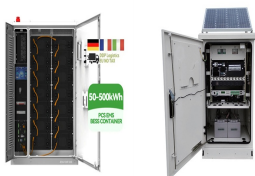
Advantages of Wind Power. Wind power creates good-paying jobs. There are nearly 150,000 people working in the U.S. wind industry across all 50 states, and that number continues to grow. According to the U.S. Bureau of Labor Statistics, wind turbine service technicians are the fastest growing U.S. job of the decade. Offering career opportunities ranging from blade fabricator to ???



Today, solar energy is more accessible than ever. According to the International Energy Agency (IEA), solar photovoltaic capacity has grown by 22% annually over the last decade, and costs for solar installations have dropped by 85% since 2010.. Using solar power to generate electricity at home is a very appealing option for a number of reasons: not ???



Wind power is the use of wind energy to generate useful work. Historically, wind power was used by sails, Companies use wind-generated power, and in return, they can claim that they are undertaking strong "green" efforts. [99] Wind ???



**WIND ENERGY IN THE UK** There are currently more than 8,500 onshore wind turbines in Britain, and over 2,000 offshore. In total nearly 25% of the UK's electricity in 2020 was generated by wind power, second only to gas, and considerably more than any other renewable source. We have some of the largest offshore wind farms in the world.

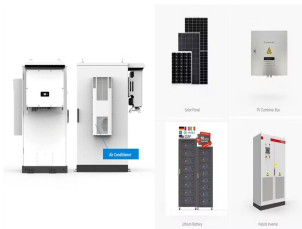


How a Wind Turbine works. How Does a Wind Turbine Work? Wind turbines work on a very simple principle: the wind turns the blades, which causes the axis to rotate, which is attached to a generator, which produces DC electricity, which is then converted to AC via an inverter that can then be passed on to power your home. The stronger the wind, the more ???

# WHERE DOES THE HOMETOWN OF WIND POWER GENERATE ELECTRICITY



The vast majority of turbines installed and energy generated by wind turbines is from utility scale wind turbines and a smaller but fast-growing proportion from offshore wind turbines. Utility scale wind turbines range in size from 100 kilowatts to several megawatts. Electricity is delivered to the power grid and distributed to the end user by



The amount of energy a single wind turbine can produce depends on its size, location, and wind speed. Large wind turbines can generate between 1 to 8 megawatts of electricity, enough to power hundreds or even thousands of homes.