

WHICH END OF THE PHOTOVOLTAIC PANEL IS FACING DOWNWARDS



What is solar panel direction? 'Solar panel direction' refers to the orientation of solar panels specifically the cardinal direction at which they are positioned to face the sun. In the Northern Hemisphere, the optimal direction is typically true south allowing panels to capture the maximum amount of sunlight throughout the day. What Is The Best Angle For Solar Panels?



Which direction should solar panels face in the UK? In the UK, solar panels should ideally face south in order to capture the most daylight throughout the day. It's best to avoid installing solar panels that face north, since there's never much daylight from that direction in the northern hemisphere. Panels can still perform well facing east or west.



Why does solar panel orientation and angle matter in a solar power system? Prior to understanding why solar panel orientation and angle matter in a solar power system, we need to know how a solar panel collects energy from the sun. Solar panel cells only collect a specific wavelength during absorbing radiant energy from the sun.



Which direction should a solar panel be oriented? In most cases, the best solar panel direction is facing south¹. Arrays that are appropriately oriented can improve energy output by up to 30% or more². However, factors such as roof slope and proximity to the equator may have some homeowners considering other directions (including north).



What is the optimal tilt angle of photovoltaic solar panels? The optimal tilt angle of photovoltaic solar panels is that the surface of the solar panel faces the Sun perpendicularly. However, the angle of incidence of solar radiation varies during the day and during different times of the year.

WHICH END OF THE PHOTOVOLTAIC PANEL IS FACING DOWNWARDS



What is the orientation of a solar panel? The orientation of a solar panel is also called its azimuth, which is the horizontal angle compared to true north (0 degrees). North-facing rooftops are traditionally considered unsuitable for solar panels in the UK, but this isn't necessarily the case anymore - solar panel technology has come a long way in the past couple of decades.



There's one type of solar panel we haven't discussed yet, low-tech thermal panels. Now, a note of caution, what follows may lead you down a rabbit hole. In simple terms, any process or gizmo that uses the sun's energy to create or store energy is ???



If you live in the UK and want to install solar panels on your roof, ground or shed, the best direction for them to face is south. This is because south-facing solar panels get the most sunlight throughout the day in the ???



In this image I want the solar panels on the lab facing the sun. Using the docking port on the end of the module as my "Control From Here," which direction should I select in MechJeb? (I use that port as the point of reference in this example since that is a standard port location on most stations when I encounter this issue)



Pitched roofs will determine the orientation of the solar panels as you can't alter the roof orientation, but flat roof solar panel systems can be orientated in any direction. The optimal direction to get the most efficient yield ???

WHICH END OF THE PHOTOVOLTAIC PANEL IS FACING DOWNWARDS



One of the overgrown industries is the renewable energy sector; the generation of global photovoltaic panel (PV) electricity reached 855.7 TWh in 2020, while the installation capacity reached



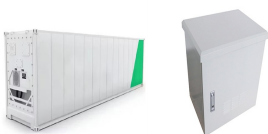
Under typical UK conditions, 1m² of PV panel will produce around 100kWh electricity per year, so it would take around 2.5 years to "pay back" the energy cost of the panel. PV panels have an expected life of least 25 to 30 years, so ???



East-facing panels will catch the early morning sun, providing a boost of energy as the day begins. This can be particularly beneficial for households that consume more electricity in the morning hours. Conversely, ???



Solar panel costs are decreasing. According to the latest UK government data [1], the cost of solar panels in the UK is at its lowest level in almost 2 years fact, between March 2023 and 2024, the median cost per kilowatt (kW) for a 0 to 4kW solar panel system has dropped more than 20 per cent.. Combine that with the falling costs of solar battery storage, and the ???

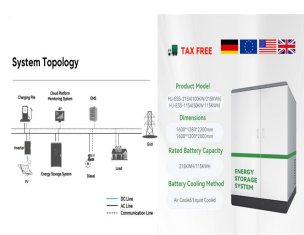


Solar panel recycling technologies are primarily designed to recover valuable resource and toxic materials (glass, Al, Ag, Si, Pb, Sn) from end-of-life PV panels. The process flow is presented in Fig. 10. During the c-Si recycling process, glass and cells are treated through mechanical processes and encapsulant polymer (EVA) is extracted or

WHICH END OF THE PHOTOVOLTAIC PANEL IS FACING DOWNWARDS



The east-west solar panel mounting system is similar to the south-facing system installation; however, the panels are placed back to back, and there is a smaller gap between rows (180mm). A further advantage is that the ballast requirements are lower for this system as the structure is more enclosed and there is nowhere for the wind to "catch".



Some tests will need to be done or information discovered to find out how long the battery should last, and what the (very small - 3 inches by 2 inches) solar panel should be capable of. Note that the east-facing panels are slightly south of east, and the second lot of west-facing panels are actually slightly north of west.



The success of a solar panel installation hinges on a harmonious fusion of solar panel angle and orientation, fine-tuned in response to local conditions. By factoring in geographical location and climatic nuances, solar panel systems can be in a position to harness the abundant solar resources prevalent throughout India. Solar Panel Direction



Solar panel inverter problems, dirty solar panels, pigeon problems under solar panels, generation meter and electrical problems with solar PV, and much more. Misty mornings will impact the generation of east-facing panels, in particular. If it's in the off/down position (which can happen after a power cut) try to flick the switch back.

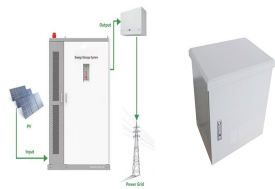


Solar panel clamps for unistrut are cheap, easy to work with and just as widely available. However, there is a specific difference between these clamps and most roof mounting system clamps. The Unistrut clamps have an end and middle clamp flavour. Unlike other systems, you cannot use the middle clamps as the end ones.

WHICH END OF THE PHOTOVOLTAIC PANEL IS FACING DOWNWARDS



It highlights that recycling or repurposing solar PV panels at the end of their roughly 30-year lifetime can unlock an estimated stock of 78 million tonnes of raw materials and other valuable components globally by 2050. If fully injected back into the economy, the value of the recovered material could exceed USD 15 billion by 2050.



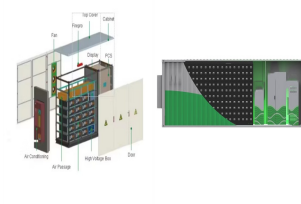
Types of solar panels. The type of solar panels you get can affect electricity output, since some solar panel types are more efficient than others.. A solar panel's efficiency indicates how well it converts sunlight into electricity. The higher the efficiency rating, the more electricity it will produce per square metre. Here's what you can expect from different solar ???



The ideal solution if you have an east-west roof is to put solar panels on both sides, which will allow you to generate electricity across each day, unlike a purely south-facing system. A larger solar panel system is almost ???

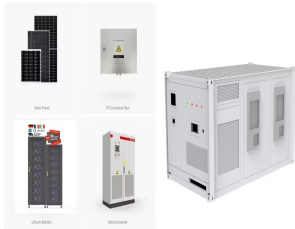


East or west-facing panels can also work well but may produce 15???20% less energy than south-facing panels. 3. Do solar panels need to be south-facing? Solar panels don't need to face south to generate energy, but it's usually the best direction for the most output. A south-facing solar panel can provide the highest amount of energy by up to 30%.



Here is the formula of how we compute solar panel output: $\text{Solar Output} = \text{Wattage} \times \text{Peak Sun Hours} \times 0.75$. Based on this solar panel output equation, we will explain how you can calculate how many kWh per day your solar panel will generate. We will also calculate how many kWh per year do solar panels generate and how much does that save you on

WHICH END OF THE PHOTOVOLTAIC PANEL IS FACING DOWNWARDS



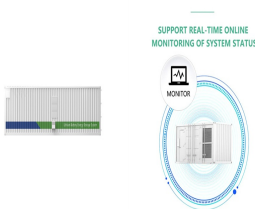
Considering these factors in conjunction with the direction of solar panel installation will allow you to make an informed decision that maximizes the efficiency of your solar panel system. To learn more about solar panels and their installation, visit our blog where we cover a wide range of topics, including how to get started with solar power and what to do if ???



Solar panel inverter. The solar inverter is a key part of any solar panel system, converting electricity from DC to AC. This needs to happen before the inverter can be installed. The cost of your inverter will be included ???



Solar panel orientation refers to the cardinal direction the panel is facing: north, south, east or west. To be more specific, the orientation refers to the horizontal direction of solar panels in relation to the equator.



In other words, a single panel can bring down the current for the entire string when wiring in series. Luckily, solar panels have built-in coping mechanisms such as bypass diodes and half-cells. Additionally, these effects can be mitigated by favourable wiring or installing Solar Power Optimisers .



The image above shows that a south-facing panel at a 30-40 degree angle gives the maximum output (100%). take a spirit level into the attic and position it so that one end is touching the rafters. Now hold it perfectly level and measure the distance 12 inches from the rafter to the underside of the roof. solar panel installers can

WHICH END OF THE PHOTOVOLTAIC PANEL IS FACING DOWNWARDS



The solar panel angle calculator is key for cities to get the most out of the sun. Customizing Tilt Angles for Metropolitan Areas. In busy Indian cities, tailoring solar setups is key. Tools like the solar panel angle calculator ???



If you're able to install solar panels with a tilt angle of 30° and facing due south, you'll maximise their output. For roofs not facing due south, the angle they should be installed at varies ???



Solar panel tilt angle refers to the angle at which your solar panels are set relative to the ground, optimizing the amount of sunlight they can capture. It can go as high as +23.5 degrees during the summer when it's beaming down on us full blast, or dip down to -23.5 degrees in the winter. To pinpoint the declination angle on any day of



How solar panel frame impacts PV manufacturing and helps to maintain the quality of solar panels. Maintain & produce quality solar panel frame. The glass should be facing downwards. Activate the framing machine. ???



In fact, while the most effective positioning of solar panels is at a 41-degree slope on an unshaded south-facing roof, Duncan said south-west and a south-east facing roofs will only lose around

WHICH END OF THE PHOTOVOLTAIC PANEL IS FACING DOWNWARDS



in watts for a typical 2.8kW solar PV system on 11 July 2020, when it was sunny throughout the day and on 13 July when there was a mixture of sun and cloud. A south-facing solar PV system will tend to generate more around noon. The sun rises in the east and so east-facing PV panels will have maximum generation part-way through the morning.



In most cases, the best solar panel direction is facing south 1. Arrays that are appropriately oriented can improve energy output by up to 30% or more 2. However, factors such as roof slope and proximity to the equator may ???



The traditional advice for people in the Northern Hemisphere is to place the solar panels to be south-facing. Is this solar panel placement correct? panels must clean their panels either by hosing them down with water or annually hiring Cleaning folks who can scrub down the panels using solar panel brushes to clean and wipe down any tough