

WHICH PHOTOVOLTAIC PANELS NEED TO BE INSTALLED WITH PULL RODS



Do solar panels need a grounding rod? The answer depends on several factors, such as local regulations and the characteristics of the installation. In many installations, it is possible to connect the grounding of the solar panels to the house grounding rod. This can be convenient and economical, as it avoids the need to install an additional grounding rod.



What type of fixing system is used for solar PV panels? The type of fixing system used will depend on whether the solar PV panels are going to be: ground mounted. Solar PV panels can be retrofitted onto an existing roof, on top of the tiles or other roofing materials, using roof anchors (also called roof-hooks or brackets), mounting rails and clamps.



What are the different types of PV installation? There are two main types of PV installation: integrated into the roof surface, often referred to as Building-Integrated Photovoltaic (BIPV) systems or mounted above the existing roof covering, also referred to as stand-off systems.



How do solar PV roof fixing systems work? Get more information about solar PV roof fixing systems at the Ecofirst website. Solar PV tracking systems move the PV panels to track the sun, and are claimed to produce up to 30 per cent more electricity than a static array. The downside is the additional cost.



Where should a PV system be installed? Alternatively, consult the installers of the LPS. Where an LPS is fitted, PV system components should be mounted away from lightning rods and down leads (see BS 6651). For example, an inverter should not be mounted on an inside wall that has a down lead running just the other side of the brickwork on the outside of the building.

WHICH PHOTOVOLTAIC PANELS NEED TO BE INSTALLED WITH PULL RODS



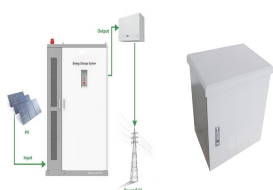
How do I choose a DC cable for a grid-connected PV system? The cables used for wiring the d.c. section of a grid-connected PV system need to be selected to ensure that they can withstand the environmental, voltage and current conditions at which they may be expected to operate. This will include heating effects of both current and solar gain.



There are different types of mounting systems for PV systems, including concrete ballasts, steel ballasts and modular ballasts. Concrete ballasts are heavy and stable, ideal for flat roofs and ???



Panel Connection. Once the panel installation is complete, PV connectors (sometimes called MC4 connectors) are linked. Depending on your inverter technology, this can be done in series or in parallel, but you won't have to worry about this as our installation experts have it covered.



In the case of most rooftop solar panel installations, the angle is determined by the roof ??? and fortunately, most roofs in the UK are angled at roughly 30 to 50 degrees. Homeowners with flat roofs used to need ???



Solar panel removal and reinstallation can be necessary for various reasons, including addressing roof leaks or making changes to your property. Whether you need to temporarily remove your solar panels to fix a roof leak or relocate them to accommodate property alterations, understanding the process and considerations involved is crucial.

WHICH PHOTOVOLTAIC PANELS NEED TO BE INSTALLED WITH PULL RODS



A fully worked example of Ground-mounted Solar Panel Wind Load and Snow Pressure Calculation using ASCE 7-16. With the recent trends in the use of renewable energies to curb the effects of climate change, one of the fast growing industries as a solution to this problem is the use of solar energy.



How to install solar panels wiring . Solar panel wiring installation is not overly complicated if you understand basic electricity procedures. First, there is a positive wire and a grounding wire. Most solar components have a ???



For areas with relatively less lightning frequency, grounding methods shown in Diagram 1 are commonly used without installation of additional lightning rods. If a system is installed on a flat

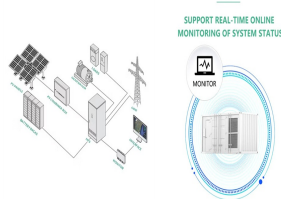


Mounting: Securely mount the PV combiner box close to the solar panels.. Connections: Connect the positive and negative terminals of the solar panels to the corresponding inputs in the combiner box.. Safety Devices: Ensure fuses and surge protection devices are installed within the combiner box.. 4. Connecting the Inverter. DC Input: Connect the output ???



Solar Power System isn't working correctly: Have a solar installation company come out to assess the damage, and do a diagnostic on your solar energy system. Your solar repair technician may decide to make a partial repair by soldering together your panels' cracked surfaces to save you the need to remove and replace your solar panel.

WHICH PHOTOVOLTAIC PANELS NEED TO BE INSTALLED WITH PULL RODS



14. Specialized panel clamps. These temporary clamps hold the panels securely during installation while allowing for precise positioning. Panel clamps act as a temporary helping hand, holding the panels securely while technicians maneuver them into the perfect position. 15. Ratchets and sockets. Once the panels are positioned, these tools come



Inputting the data into the solar panel calculator shows us that to offset 100% of electricity bills, we need a solar array producing 7.36 kW, assuming an environmental factor of 70%. The average installation cost for an 8 kW system is \$25,680.



To ensure your system is always protected, we recommend installing your grounding system before or at the same time as you install the rest of your solar installation .A grounding system can consist of one or more lightning rods, wiring, arrestors, and surge protectors. Grounding your system can cost anywhere between \$500 and \$3,500.



(Consider as well that the PV panel is self limiting as far as excess current goes ??? Asc). I would really like to understand why tying the frame to ECG would make this safer. I could see a reason to connect to earth ground to help bleed off any induced current from a near by lightning strike or something)



protection of the photovoltaic installation, both in case of a direct and indirect strike. For this reason, surge protective devices (SPDs) need to be installed to guarantee the protection from the overvoltage to all the electrical systems of the photovoltaic installation. In this context, the peculiarity is that the SPD"s

WHICH PHOTOVOLTAIC PANELS NEED TO BE INSTALLED WITH PULL RODS



However, considering that only about 85% of a solar panel's energy capacity is fulfilled, you'd need five 160W panels to meet this 608kWh energy requirement, which would set you back around ?1,120. This means it would take 26 months of using your motorhome to break even on your flexible solar panel purchase.



The number of SPDs installed in a solar PV system varies depending on the distance between the panel and the inverter. When the cable length between solar panels is under 10 meters: 1 SPD should be installed by the inverter, combiner boxes, or ???



Type of solar panel: Description: Average efficiency rating: Average lifespan: Pros: Cons: Monocrystalline. Black solar panel. Most efficient for domestic households. 18 - 24%. Most efficient commercially available panels. 25 - 40 years . Most efficient . Most expensive. Polycrystalline. Blue mosaic look. 13 - 16%. 25 - 30 years. Moderately



The best orientation for a solar panel depends on where you are in the world. Solar panels in the UK will always work best when pointed south, as it means they're facing the sun. This is usually known as a zero-degree ???

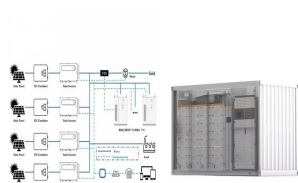


??? Solar panel installation is much easier if you have a useable loft space It's much easier to get rooftop solar panels installed if you have a loft space. This way, installers can look at the underside of your roof beforehand to check its structure and pinpoint where the rafters are, then look afterwards to make sure the felt isn't torn and the bolts have gone straight into the ???

WHICH PHOTOVOLTAIC PANELS NEED TO BE INSTALLED WITH PULL RODS



Greentech Renewables has organized crucial insights to help solar installers understand the most cost-effective and safest options when working on metal roof solar installations. The following article covers various metal roof types and their associated racking methods, reviews industry-leading metal roof racking equipment, and offers best practices in installing PV systems on ???



6kW solar system savings for a UK household. The standard cost of a 6kW solar panel system can stretch between £9,500 and £10,500 on its own. The cost of a 6kW system with a battery can be higher since a battery adds £3,500 to £10,000, depending on the capacity.



These transient currents and voltages will appear at the equipment terminals and likely cause insulation and dielectric failures within the solar PV electrical and electronics components such as the PV panels, the inverter, control and communications equipment 2, as well as devices in the building installation 3. The array box, the inverter, and the MPPT ???



What are solar farms? First off, an introduction to what solar farms actually are. In short, a solar farm is functionally no different from the same solar panels you'll find on rooftops around the world, only at a much greater scale. When you collect large amounts of solar panels and place them in optimal locations, the potential for generating electricity increases immensely.



I. Introduction . Welcome to our guide on ground-mounted solar panels! Nowadays, everyone's talking about solar energy, and it's easy to see why 's a clean, green way to power our homes and businesses. While many people think of solar panels as something you put on the roof, there's another option that's gaining popularity: ground-mounted solar panels.

WHICH PHOTOVOLTAIC PANELS NEED TO BE INSTALLED WITH PULL RODS

114KWh ESS



114KWh ESS

PV panel frames bonded ground mount, which is bonded a 8ft ground rod beside the ground mount. DC running in conduit back to home, 300 feet away. Combiner box bonded to same ground rod, at the ground mount.

FLEXIBLE SETTING OF
MULTIPLE WORKING MODES



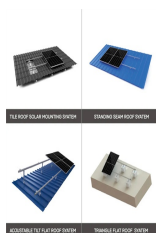
Grounding solar panels is an essential step in the installation process to ensure safety and prevent electrical hazards. Without proper grounding, solar This method eliminates the need for individual panel grounding but may require specific inverters with grounding capabilities. 3. Grounding through the solar panel frames.



Learn how to install a solar panel system for your home with this easy-to-follow guide. Get all the information you need on materials, tools and safety precautions to ensure a successful installation. First off, you'll need a solar panel array. This is the heart of any solar power system, as it collects energy from the sun and converts it



In this guide, we'll explain a typical solar panel installation from start to finish, as well as what all the hardware does, and where on your property you can install the panels. If you're interested in how much you could save with a solar & battery system, click the button below, enter a few details, and we'll generate an estimate.



Ideally, install the inverter on an exterior wall between your solar panel's junction box and the main circuit breaker panel to your house. Some code's will require the inverter and your AC Disconnect switch to be within a ???

WHICH PHOTOVOLTAIC PANELS NEED TO BE INSTALLED WITH PULL RODS



When installing a solar panel system, one of the most important aspects to consider is the earthing system. It is an essential component that guarantees the safety of the system and optimises its operation.. In this guide, we will explain ???



Hi installing my first solar PV on my own home before starting the courses next year and need some advice on earthing PV. System 6kw solar PV - 2 strings Solis Rhi inverter 20Kwh pure energy battery's The solis inverter has its own TT system to run as a floating neutral when in UPS mode which is 6mm. I'm then looking at earthing the PV panels with 6mm in a ???