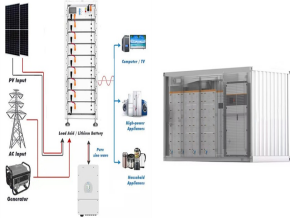


WHICH TYPE OF ROOF PHOTOVOLTAIC PANEL IS BETTER TO USE



Our experts have researched a broad range of solar panels on the market to help you decide which option best suits your needs. While looking at different providers, we examined the cost of solar panels, as well as their ???



The race to produce the most efficient solar panel heats up. Until mid-2024, SunPower, now known as Maxeon, was still in the top spot with the new Maxeon 7 series. Maxeon (Sunpower) led the solar industry for over a decade until lesser-known manufacturer Aiko Solar launched the advanced Neostar Series panels in 2023 with an impressive 23.6% module ???



Finding an unshaded spot is best, but sometimes shading is unavoidable. Some solar panel systems can minimise the impact of shading using "optimisers". Solar optimisers help improve the overall performance of your solar panel system. So, if one panel is shaded, it doesn't impact how much electricity the other panels can generate.

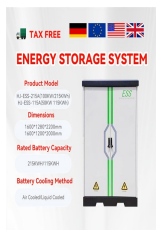


Pros of monocrystalline solar panels: High efficiency: monocrystalline solar panels are very efficient due to their single silicon structure. High quality: monocrystalline panels have a long lifespan and are durable enough to withstand harsh weather conditions. Good performance in low light: compared to other types of solar panels, monocrystalline can offer good performance in ???



There's one type of solar panel we haven't discussed yet, low-tech thermal panels. Now, a note of caution, what follows may lead you down a rabbit hole. In simple terms, any process or gizmo that uses the sun's energy to create or store energy is ???

WHICH TYPE OF ROOF PHOTOVOLTAIC PANEL IS BETTER TO USE



Solar panels can be a worthwhile investment whatever direction they face, but some directions are more suitable than others. A south-facing roof is the ideal scenario in the UK, followed by a roof that faces east or west.



Solar roof tiles use thin film solar panel technology to cover the surface of a roof tile with solar PV material. They look fabulous, even offering a solution to planning limitations on listed buildings, and are more durable than standard solar panels.



SunPower, REC, Panasonic, Maxison, and Jinko Solar offer the best solar panels. The type of solar panel, power output, efficiency, performance in warm climates, warranty, and price are the key factors to ???



When talking about solar technology, most people think about one type of solar panel which is crystalline silicon (c-Si) technology. While this is the most popular technology, there is another great option with a promising outlook: thin-film solar technology. Thin-film solar technology has been around for more than 4 decades and has proved itself by providing many ???



The first part is the power optimizer, which handles DC to DC and optimizes or conditions the solar panel's power. There is one power optimizer per solar panel, and they keep the flow of energy equal. For example, with a standard string inverter, if one solar panel produces less energy, all the solar panels in that string will produce less energy.

WHICH TYPE OF ROOF PHOTOVOLTAIC PANEL IS BETTER TO USE



Monocrystalline Panels Best For: Chalets with smaller roof areas.

Thin-film panels perform better when exposed to direct sunlight and low temperatures. Lifespan and Warranty: Among all the varieties of solar panel types, which one is the most cost-effective? A2: Monocrystalline solar panels are the most efficient, with efficiency rates



To work out how much electricity a solar panel will generate for your home we need to multiply the number of sunshine hours by the power output of the solar panel. For example, in the case of a 300 W solar panel, we would calculate 4.5×300 (sunlight hours x power output) which equals 1,350 watt-hours (Wh) or 1.35 kWh.



In May, UK-based Oxford PV said it had reached an efficiency of 28.6% for a commercial-size perovskite tandem cell, which is significantly larger than those used to test the materials in the lab



Although some roof shapes and angles are better for solar production than others, solar panels are extremely versatile and can provide energy cost savings and carbon footprint reduction in a wide range of configurations. Several factors play into solar panel efficiency. The type of solar cells and how the panels are constructed are the most



When a solar panel array is installed on a tile roof, they will need to be attached to brackets that will lift the panels above the roof. The distance that the panels must be raised will be dependent on the material ???

WHICH TYPE OF ROOF PHOTOVOLTAIC PANEL IS BETTER TO USE

114KWh ESS



1500V 1500V 1500V 1500V 1500V

Furthermore, the decision on the most appropriate type of the solar panel mounting system will also affect the final cost of the project. The installation of the roof mounting may even imply modifications to your house structure that could increase upfront costs.



Variations in materials and production cause differences in appearance between each type of solar panel. Some look better than others on a traditional black shingle roof. Monocrystalline solar panels: Black. If you see ???



Let's explore the different types of solar panel roof mounts. We want to help you find the best option that not only looks good but also functions well. Consider the different choices and how they balance aesthetics with ???

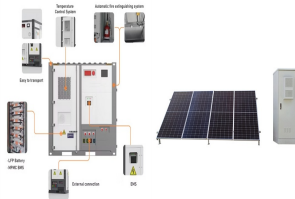


Beyond these three main categories, you might have also heard about N-type, P-type, HJT, or TOPCon gaining attention. These refer to advanced innovations within the monocrystalline panels.. The solar industry is ???



Solar panels have better performance in terms of solar efficiency. Several reasons can explain this. Most solar shingles are made of copper indium gallium selenide, which is thin and flexible. Either type of solar panel roof can help you do your bit to reduce carbon emissions and protect the planet. But for most people, going with solar

WHICH TYPE OF ROOF PHOTOVOLTAIC PANEL IS BETTER TO USE



Solar panel roof tile manufacturers in the UK. As of today, three prominent manufacturers stand out for their reputation, reliability, and commitment to delivering high-quality products: GB Sol, Tesla, and Solecco. Let's delve into the innovative solutions these esteemed companies offer in solar panel roof tiles. GB Sol solar Tiles



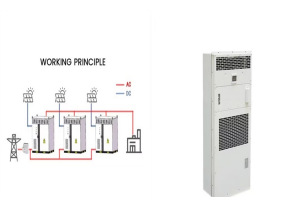
The tilt of the roof will determine the effect of energy production by your solar panel system. If the roof is too steep, such as over 40 degrees, then energy production and solar harvest is less. If the roof is flat, you can install solar panels and just have to use brackets to angle the panels. Shape and Size of Roof



A solar roof tile is a type of building-integrated photovoltaic system, and more and more new homes are being built with solar-tiled roofs as standard. Like traditional solar panels, solar slates use photovoltaic (PV) technology to generate energy from the sun and convert this into usable electricity to power homes.



Using an inverter instead of directly connecting your solar panel system to household appliances is also better for the battery bank because it reduces how much current gets drawn at any given time. If your inverter were constantly drawing 120 volts @ 100 amps, 24 hours per day, things would eventually degrade even further than if you hooked it up directly to ???



So a typical 4kW GSE integration solar panel installation of 16 integrated panels and an inverter, will cost ?3200 for a new roof or around ?4700 for an existing roof. Actual costs will vary depending on the type and size of ???

WHICH TYPE OF ROOF PHOTOVOLTAIC PANEL IS BETTER TO USE



If you're considering installing a residential or commercial solar panel system, you might wonder if your roof type is appropriate for a solar installation. The good news is that solar panels can be installed on just about any roof type, but the installation process and mounting hardware might vary from material to material.



In the U.S., residential solar installations have been continuously increasing during the last few years, reaching 1GW DC in the Q4 of 2021. This solar energy adoption is driven by many factors, such as the cutting-edge technologies that are being developed, like instance solar shingles.



Our essential solar panel guide, including types of solar pv panels, how much electricity you can expect to generate and tips from experienced owners The average UK home's roof slopes at 30 degrees ??? use this in a calculation if you're not sure. Perform better than other types in low levels of sunlight. Dark black in colour