

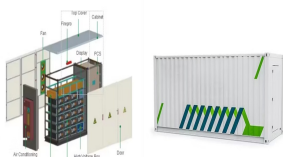
WHY CAN'T PHOTOVOLTAIC PANELS BE INSTALLED IN METER BOXES



Why Your Utility Meter Should Also be a Net Meter or Smart Meter. Most solar systems are not independent of the utility grid. These systems are called grid-tied systems, and combine the cost-saving, energy-independence elements of off-grid solar power with the easily accessed electricity from the power grid.. You can offset 100% of your usage with a grid-tied solar system.



Since the introduction of the feed-in tariff (FIT) scheme in 2010, an increasing number of consumers have installed renewable electricity generating equipment, such as solar photovoltaic (PV) at



Whether you have a solar panel system installed or you're considering one, you might be wondering if the smart meter solar panels can be combined. According to a recent official report by the government, there are around 30.3 million smart meters installed in households across the United Kingdom, making up 56% of all electricity meters.



Fact Checked. This Canstar Blue article discusses solar smart meters ??? what they are, where to get them and what they cost. Installing solar panels is an excellent way to save on electricity costs and reduce your household emissions. But prior to using your new solar system, you may need to upgrade your traditional meter or install a smart meter.



Total Generation Meter. The schematic diagram that should be near your inverter. Any cables that go from your inverter to your panels. Your solar panel array/s. If it is possible, a picture of underneath the panels or the gap between the panels ???

WHY CAN'T PHOTOVOLTAIC PANELS BE INSTALLED IN METER BOXES



There will also be a generation meter, so you can see how much power your panels are producing. Read more: our guide to solar panel installation. 4. There isn't enough sun for solar panels. Although the UK is not famously sunny, we do have enough sunlight for solar panels to work effectively.



Damaged and Faulty Solar Panels - Solar Panel Replacement. If any solar panel is damaged or faulty then in most systems (those where panels are wired together in strings) there is a good chance that the solar PV system will see a significant reduction in overall power generation. A damaged or faulty solar panel can't always be seen but it can



a. If the inverter is on and generating but the meter remains blank then the meter will need replacing b. If the Inverter on and generating and the meter is displaying 8's and the red light is intermittently flashing then the meter will need replacing c. If the meter remain blanks and the inverter is not generating then it suggest there is AC



That's perhaps not surprising since nearly 3.5million of them aren't working in "smart mode", according to government data published in August 2024. This means that they're not connecting to the smart meter network, ???



A ballasted solar panel can weigh around 100kg, whereas a non-ballasted solar panel is only about 20kg. On a roof with a 10-panel system, that difference of 1000kg vs 200kg is significant. To see if that weight is feasible for your flat roof, you'll need a qualified expert to do a structural survey to test its strength - however most residential flat roofs aren't strong enough ???

WHY CAN'T PHOTOVOLTAIC PANELS BE INSTALLED IN METER BOXES



Can Solar Panels Be Installed Without a Smart Meter? Indeed, one may install solar panels without a smart meter. Having a smart meter, nevertheless, can help your solar panel system be more beneficial. It lets you measure your solar energy output and consumption precisely, therefore optimising your energy savings and helping you to take part in



If a rooftop installation isn't suitable, the panels can be installed on a ground framework. This is also known as a "ground mounted system". How is the inverter installed? There are 3 main types of solar systems installed in Australia. The most common is a string system ??? where all the panels are connected in series on a string. With



Mid-clamps are used between panels to help secure two panels in place and ensure there is equal spacing between them (usually 20mm) for aesthetic reasons. At least 4 clamps are used to secure each solar panel to the mounting frame, with different clamps being used for ???

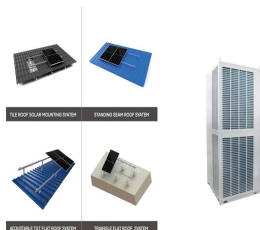


Is your solar Solar Panel system working correctly. We repair faults and service solar PV panel systems in Newbury, West Berkshire, and Hampshire. Check the generation meter's display is visible, & the indicator light is flashing (most have a red LED indicator light). Be sure to check during daylight when the system should be generating.

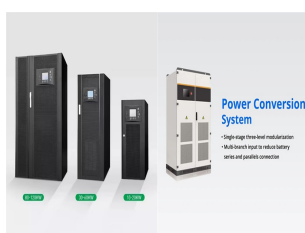


In some cases, the cost of hiring a certified contractor to install solar panels can be twice as much as the cost of the panels themselves. If you're wondering why you can't install your own solar panels, the answer is simple: ???

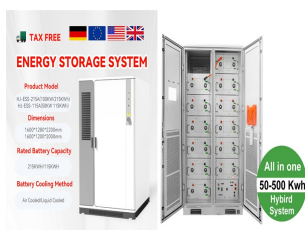
WHY CAN'T PHOTOVOLTAIC PANELS BE INSTALLED IN METER BOXES



Follow the simple step-by-step process to install Enphase IQ Microinverters and IQ Cables on the roof. Position the Enphase IQ Cables. Install an AC branch circuit junction box/isolator. Attach the Enphase IQ Microinverters to the PV ???



Here the technician takes readings at the rear of a solar photovoltaic system panel with a Fluke 393 FC Solar Clamp Meter CAT III 1500 V. Troubleshooting a PV solar photovoltaic system will typically focus on four parts of the system: the PV panels, load, inverter, and combiner boxes. The all-around best tool to use for working in most areas of



A junction box is added between the utility meter and the main service panel. Then the wires from the utility meter, the main breaker panel, and the PV solar are connected in the junction box. An adequately sized PV service disconnect ???



Sources and references: 1 Finance is subject to eligibility, terms and a \$500 deposit. 0% APR fixed over 36 months.. 2 These annual energy savings are dependent on your property type and location, roof type, slope, and size. If your roof is shaded or isn't south facing, figures are likely to be lower. We based the figure on the following: a) You have 12 (430W) ???



solar panels can help achieve this. Once you've covered the upfront cost of installing solar panels you can enjoy cheaper bills for years to come. ??? Reduce your carbon footprint By harnessing low carbon solar electricity, a typical home solar panel system could save around 800kg of carbon a year depending on where you live in the UK.

WHY CAN'T PHOTOVOLTAIC PANELS BE INSTALLED IN METER BOXES

114KWh ESS



When your solar PV system is installed you may need to have a new meter installed. If you have a traditional accumulation meter (with a spinning disk) this will need to be replaced with an interval meter or smart meter. This is because an accumulation meter does not record the energy you export to the grid or the electricity you import from the



I. Introduction . Solar panels have become increasingly popular in recent years as people seek environmentally friendly ways to generate electricity and reduce their energy bills. These panels, often installed on rooftops or in open spaces, harness the power of the sun to produce electricity for homes and businesses. However, with this surge in solar panel ???



If your fuse box is already full, the electrician may install a separate mini fuse box often referred to as a "garage board". The garage board is effectively a dedicated fuse box just for your solar panel system. Next, a generation meter will be ???



Ideally, install the inverter on an exterior wall between your solar panel's junction box and the main circuit breaker panel to your house. Some code's will require the inverter and your AC Disconnect switch to be within a certain distance of your electricity meter.



First generation meters have been known to have troubles with solar panel connection. However, second generation is fully compatible. However, second generation is fully compatible. If your current provider is refusing to ???

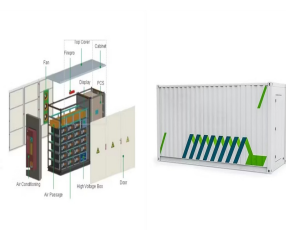
WHY CAN'T PHOTOVOLTAIC PANELS BE INSTALLED IN METER BOXES



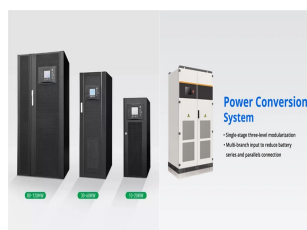
Contact your solar panel installer or a solar panel maintenance professional. If your generation meter is replaced, make sure you get a letter from the installer stating what they have done and that they changed the meter ???



When you install a solar energy system, you gain a few additional components on the side of your home or business. The Inverter, the AC Disconnect, the Production Meter, the Service Panel and the Bi-Directional meter all work together on your new system. Below are some commonly asked questions on how they work: 1.



When was this system installed? We are getting to the time of year where the panels don't produce a great deal and so savings less obvious. Do you make the most matching useage with generation. i.e. using the expensive to run appliances when there is most sun on the panels and avoiding having the high powered appliances on at the same time.



I have to say that every solar PV installation I have seen is connected from the inverter through a breaker switch (sometimes one in the loft and one downstairs) to the generation meter and ???



Smart Meters are not mandatory just yet, however, the British government wants every household to be equipped with one by 2020. Furthermore, if the consumer chooses not to have a smart meter fitted, ???

WHY CAN'T PHOTOVOLTAIC PANELS BE INSTALLED IN METER BOXES



If the main electrical meter is installed in a separate enclosure from the main service panel, you can probably install consumption CTs without any additional electrical wiring. Complete the form below appropriate to your installation. Separate Meter and Service Panel YES NO Is the utility meter installed in an enclosure separate



I have to say that every solar PV installation I have seen is connected from the inverter through a breaker switch (sometimes one in the loft and one downstairs) to the generation meter and then either through an existing MCB on the consumer unit or on an MCB on a separately installed CU which is then connected in the same way as the existing CU, i.e. on the CU side of the house.