

WHY FLYWHEEL ENERGY STORAGE IS ELIMINATED



Are flywheel energy storage systems feasible? Flywheel energy storage systems are feasible for short-duration applications, which are crucial for the reliability of an electrical grid with large renewable energy penetration. Flywheel energy storage system use is increasing, which has encouraged research in design improvement, performance optimization, and cost analysis.



How does Flywheel energy storage work? Flywheel energy storage (FES) works by accelerating a rotor (flywheel) to a very high speed and maintaining the energy in the system as rotational energy.



Can a flywheel energy storage system be used in a rotating system? The application of flywheel energy storage systems in a rotating system comes with several challenges. As explained earlier, the rotor for such a flywheel should be built from a material with high specific strength in order to attain excellent specific energy.



What are the components of a flywheel energy storage system? The main components of a flywheel energy storage system are a rotor, an electrical motor/generator, bearings, a PCS (bi-directional converter), a vacuum pump, and a vacuum chamber. During charging, the rotor is accelerated to a high speed using the electrical motor.



What is a flywheel/kinetic energy storage system (fess)? Thanks to the unique advantages such as long life cycles, high power density, minimal environmental impact, and high power quality such as fast response and voltage stability, the flywheel/kinetic energy storage system (FESS) is gaining attention recently.

WHY FLYWHEEL ENERGY STORAGE IS ELIMINATED



How much energy does a flywheel produce? The net energy ratios of steel and composite flywheels are 2.5???3.5 and 2.7???3.8. The GHG emissions of steel and composite flywheels are 75???121 and 49???95 kg CO₂ eq/MWh. Flywheel energy storage systems are feasible for short-duration applications, which are crucial for the reliability of an electrical grid with large renewable energy penetration.



Fig. 1 has been produced to illustrate the flywheel energy storage system, including its sub-components and the related technologies. A FESS consists of several key components: (1) A rotor/flywheel for storing the kinetic energy. With the shaft eliminated, there is also no detrimental stress caused by shrink-fit.



Flywheel energy storage systems are feasible for short-duration applications, which are crucial for the reliability of an electrical grid with large renewable energy penetration. Flywheel energy storage system use is increasing, which has encouraged research in design improvement, performance optimization, and cost analysis.



Flywheel energy storage systems are feasible for short-duration applications, which are crucial for the reliability of an electrical grid with large renewable energy penetration. ???



In the field of flywheel energy storage systems, only two bearing concepts have been established to date: 1. Rolling bearings, spindle bearings of the & #x201C;High Precision Series& #x201D; are usually used here.. 2. Active magnetic bearings, usually so-called HTS (high-temperature superconducting) magnetic bearings.. A typical structure consisting of rolling ???

WHY FLYWHEEL ENERGY STORAGE IS ELIMINATED

114KWh ESS



FES BMS CE MSD UN38.3 UN38.3

Flywheel Energy Storage System ??? Why Pursue Flywheel Energy Storage? ??? Non-toxic and low maintenance ??? Potential for high power density (W/ kg) and high energy density (W-Hr/ kg) ??? ???



5 MONITORING
5 EQUIPMENT
5 POWER
5 BATTERY MANAGEMENT

Flywheel Energy Storage (FES) systems refer to the contemporary rotor-flywheels that are being used across many industries to store mechanical or electrical energy. Instead of using large iron wheels and ball bearings, advanced FES systems have rotors made of specialised high-strength materials suspended over frictionless magnetic bearings



One energy storage technology now arousing great interest is the flywheel energy storage systems (FESS), since this technology can offer many advantages as an energy storage solution over the alternatives. so leakage can be very small. This means that the vacuum pump does not need to operate frequently, or can be eliminated with a



The principle of rotating mass causes energy to store in a flywheel by converting electrical energy into mechanical energy in the form of rotational kinetic energy. 39 The energy fed to an FESS is mostly dragged from an electrical energy source, which may or may not be connected to the grid. The speed of the flywheel increases and slows down as



Today, flywheel energy storage systems are used for ride-through energy for a variety of demanding applications surpassing chemical batteries. By removing air from the rotating area of the motor, all windage losses from the system are eliminated, thereby increasing electrical efficiency. 2. The flywheel incorporates a steel mass for storage.

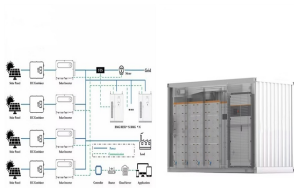
WHY FLYWHEEL ENERGY STORAGE IS ELIMINATED



One of the key elements of a flywheel energy storage system is the electric machine which acts as a motor to store energy and acts as a generator when supplying energy to the loads. The essentially eliminated so the electrical power is approximately equal to the mechanical shaft power as shown in (3). Additionally, eddy current and



Our flywheel's higher energy efficiency and permanent energy storage make Active Power's solution the green one. Our flywheel will use 90% less carbon during manufacture than traditional batteries. Our system is up to 98% energy efficient, reducing the ongoing carbon emissions and resulting pollution generated from wasting electricity.



Flywheel energy storage (FES) is a technology that stores kinetic energy through rotational motion. The stored energy can be used to generate electricity when needed. Flywheels have been used for centuries, but modern FES systems use advanced materials and design techniques to achieve higher efficiency, longer life, and lower maintenance costs.

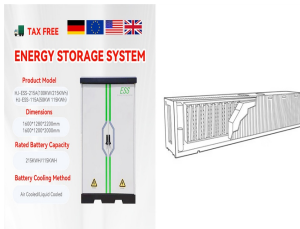


Description of Flywheel Energy Storage System 2.1. Background The flywheel as a means of energy storage has existed for thousands of years as one of the earliest mechanical energy storage systems. For example, the potter's wheel was used as a rotatory object



The flywheel energy storage system (FESS) offers a fast dynamic response, high power and energy densities, high efficiency, good reliability, long lifetime and low maintenance requirements, and is

WHY FLYWHEEL ENERGY STORAGE IS ELIMINATED



A flywheel is a simple form of mechanical (kinetic) energy storage. Energy is stored by causing a disk or rotor to spin on its axis. Stored energy is proportional to the flywheel's mass and the square of its rotational speed. Advances in power electronics, magnetic bearings, and flywheel materials coupled with



The cost invested in the storage of energy can be levied off in many ways such as (1) by charging consumers for energy consumed; (2) increased profit from more energy produced; (3) income ???



The flywheel storage technology is best suited for applications where the discharge times are between 10 s to two minutes. With the obvious discharge limitations of other electrochemical storage technologies, such as traditional capacitors (and even supercapacitors) and batteries, the former providing solely high power density and discharge times around 1 s ???



One energy storage technology now arousing great interest is the flywheel energy storage systems (FESS), since this technology can offer many advantages as an energy storage solution over the



The main components of a typical flywheel. A typical system consists of a flywheel supported by rolling-element bearing connected to a motor???generator. The flywheel and sometimes motor???generator may be enclosed in a vacuum chamber to reduce friction and energy loss.. First-generation flywheel energy-storage systems use a large steel flywheel rotating on mechanical ???

