

# WILL INSTALLING PHOTOVOLTAIC PANELS ON THE ROOF AFFECT PREGNANCY



Do solar panels damage your roof? While solar panels themselves will not inherently damage your roof, an improper installation can lead to problems down the line. It is crucial to ensure that the installation is done correctly by a professional, or with thorough research and proper planning if you choose to do it yourself.



Do solar panels add weight to your roof? Additional Weight Solar panels can add significant weight to your roof, so it is crucial to ensure that your roof can support the additional load. Before installing solar panels, it is essential to have a professional assess the structural integrity of your roof and determine its weight-bearing capacity.



Can solar panels be installed on a roof? Solar panels are a popular choice for homeowners looking to reduce their carbon footprint and save on energy costs. However, installing solar panels on roofs can come with its own challenges and potential problems.



Can solar panels be installed on a combustible roof? In general terms, solar panels should not be installed on combustible roofs unless some form of fire protection can be installed between the panels and the roof e.g. concrete panels or pebble ballast.



3. Location of solar panels  
Do stationary flat roof solar panels have a solar tracker? The one drawback with stationary flat roof solar panels is that they can't turn to face the sun's direction. This is where an automatic solar tracker system comes into play. A solar tracker will allow the panels to turn to always face the sun and absorb its rays. (all quotes are 100% free! There's no catch!)

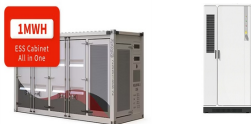
# WILL INSTALLING PHOTOVOLTAIC PANELS ON THE ROOF AFFECT PREGNANCY



Does ppm install solar panels made with toxic materials? In the best interest of our customers and the planet, PPM does not install solar panels manufactured with toxic materials. Instead, we use LED-free equipment without the Cadmium Telluride sometimes found in modern solar panels. Even further, we do not install high-voltage DC systems in residential neighborhoods.



Sources and references: 1 Finance is subject to eligibility, terms and a ?500 deposit. 0% APR fixed over 36 months.. 2 These annual energy savings are dependent on your property type and location, roof type, slope, and size. If your roof is shaded or isn't south facing, figures are likely to be lower. We based the figure on the following: a) You have 12 (430W) ???



Roof Condition. Before installing solar panels, evaluate the condition of your metal roof. If it's nearing the end of its lifespan, consider replacing or renovating it before the solar panel installation. Maintenance. Though metal roofs require minimal maintenance, periodic inspections are vital. Check for any signs of corrosion, especially



The cost of installing a solar panel system on your conservatory roof is the same as that of a regular roof since the system will be similar in size and equipment type. Average prices can range between ?5,000 and ?10,000 for a 3.5kW solar panel system. The actual amount you pay will depend on various factors like:

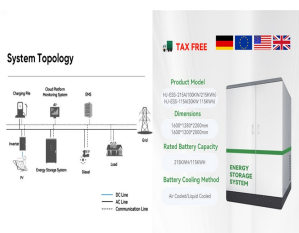


6 Product and installation standards and test methods for microgeneration systems 28 6.1 PV systems 29 6.2 Solar thermal systems 31 6.3 Microwind turbines 32 Annex Simplified method for determining wind loads on roof-mounted photovoltaic, 34 solar thermal and microwind turbines A.1 Simplified method for PV and solar thermal systems 34

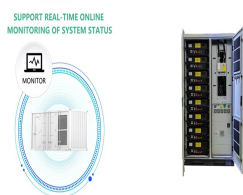
# WILL INSTALLING PHOTOVOLTAIC PANELS ON THE ROOF AFFECT PREGNANCY



What Problems With Installing Solar Panels Can Arise? When people don't ask themselves any of the above questions and just dive into installation, they risk many problems. 1) They invest a ton of money but get ???



The results show that after installing photovoltaic panels, the delay performance of the roof increases by 0.5 h, the roof heat flux is reduced by 41.7%, the peak temperature of the roof is reduced by 22.9 °C, and the daily heat gain is reduced by 74.84%. It was also found that the roof with PV panels has a shading effect on radiation



Condition of Roof for Solar Installation. Roof should be clear, with solutions available for obstructions like chimneys. Cleanliness is not crucial; moss or similar is acceptable. In-Roof Systems on Old Roofs. Ideal for old roofs, allowing roof replacement with an integrated solar system. Saves on tile costs and labour, making installation



Panel Installation: Place each solar panel onto the stanchions and connect the plug connections for each panel. Ensure a secure fit by fastening the retaining clips to the rails using screws. Wire Connections: Establish wire connections by linking the array of solar panels to the next one, ensuring that the wiring and connections are correctly installed.



3. Make space for the solar panel accessories (solar inverter, cables and solar batteries, if desired), for instance in a plant room. 4. Plan a day for installation. 5. Erect the scaffolding (this can be done by your supplier or by ???)

# WILL INSTALLING PHOTOVOLTAIC PANELS ON THE ROOF AFFECT PREGNANCY



In this comprehensive guide, we'll take you step-by-step through the process of installing solar panels on your roof, from assessing your roof's suitability to choosing the right solar panels and finding a qualified solar installer. Key ???



Solar Panel Installation and Types. Discover how to participate in the SEG scheme and navigate planning permissions in the UK while exploring the essential concept of DNO approval for a seamless solar panel experience. The Process of Installation. Flat Roof Solar Systems Explained. In-Roof Solar Systems. Free Solar Panel Installation With ECO4



Greentech Renewables has organized crucial insights to help solar installers understand the most cost-effective and safest options when working on metal roof solar installations. The following article covers various metal roof types and ???



In fact, your roof may be in more need of TLC than the solar panels you want installed on it. So first, a professional surveyor will check your roof and rafters to ensure that a solar panel installation can go ahead safely. The results of the survey may affect the price quoted by your solar panel providers. With that done, the installation can



Yes, you can install solar panels on your conservatory roof and it's an almost identical process to installing them on the roof of your home ??? if your conservatory has a solid roof. Solar panels on glass roofs are typically ???

# WILL INSTALLING PHOTOVOLTAIC PANELS ON THE ROOF AFFECT PREGNANCY



offsetting the roof access loads without consideration of snow loads. in some instances, they have seen the full access load being offset, which raises the question of how someone is meant to install or maintain the PV panels. no consideration of localised snow drift due to PV panels providing new obstructions on the roof



The pitch, or angle, of your roof can affect the efficiency of solar panels. The ideal roof pitch is between 30° and 40°. Even if the angle of your roof falls outside of this range, you ???



Solar Panel Orientation in the UK. Your solar panel orientation is very important when it comes to maximising the amount of electricity that your solar panels will produce. As we're in the northern hemisphere the best solar panel orientation is obviously south, but: What happens if ???



Bifacial solar panels represent a significant advancement in photovoltaic technology, offering the potential to capture sunlight from both their front and rear surfaces. This innovative design can increase energy yield by 5-30% compared to traditional monofacial panels, making them an attractive option for many solar installations. However, to maximize their ???



Do solar panels contribute to the heat island effect? How solar panels affect roof temperature. Solar panels are known to absorb sunlight and convert it into electricity, which raises questions about whether they contribute ???

# WILL INSTALLING PHOTOVOLTAIC PANELS ON THE ROOF AFFECT PREGNANCY



Installing a flat roof solar PV system may affect your roof's warranty, depending on the type of mounting system you choose. Free-standing, ballasted solar PV systems are usually compatible with most roof warranties, as they do not require drilling holes or making alterations to the roof structure.



Architectural aspects that affect the installation of solar panels. What should be the solar panel location on a building? The roof space will determine the available surface in which the property defines to locate the PV ???



Flat roof solar panel installation falls under permitted development so you shouldn't need to apply for planning permission. As long as your panels do not exceed the highest part of your roof, you should be fine.



The impact of direction on solar panel output. Your solar panel system's direction is one of the biggest factors in determining its output. This chart below uses an average of 26 arrays in Yorkshire that all have peak power ???



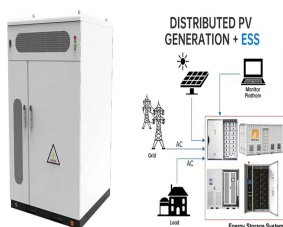
This publication provides practical guidance on the installation of roof-mounted renewable energy systems and complements existing guidance contained in other sources including the NHBC ???



# WILL INSTALLING PHOTOVOLTAIC PANELS ON THE ROOF AFFECT PREGNANCY



Home renovations don't have to be stressful or excessive, and solar panel installation is neither. Solar Panels Are Low Maintenance. Not only are solar panels easy to install, but they also require next to no maintenance. Once the panels are set up on your roof, you can essentially just forget about them.



Flat roof PV systems are generally installed in the form of concrete columns and PV brackets. The investment cost is not high and the economy is better. On a horizontal roof, we can determine the angle of the PV panels by adjusting the brackets so that the PV system receives the most light radiation to obtain the maximum power generation. The biggest benefit of installing PV power ???



Let's discover eight steps for installing solar panels on the roof, helping you reap optimal benefits from installing solar rooftop panels. How to Install Solar Panels on the Roof. How you install solar panels is determined by ???



In this paper, the effects that photovoltaic (PV) panels have on the rooftop temperature in the EnergyPlus simulation environment were investigated for the following cases: with and without PV



The installation process typically takes several days to complete, depending on the size of the system and the complexity of the installation. During the installation process, the photovoltaic panels are mounted on the roof or on a ground ???

# WILL INSTALLING PHOTOVOLTAIC PANELS ON THE ROOF AFFECT PREGNANCY



There are a large number of formally approved solar panel installations in conservation areas, including on roofs that face the road. If there is any shade over the solar panels, this can have a large effect on the overall efficiency of the system. As a result, it is important to clear the installation area of any overhanging branches, and



The orientation of the roof may also affect its stability, as wind speeds and other weather patterns can vary from one side of the house to the other. are the most common type of roof used for solar panel installation. Flat roofs are generally easy to install on and provide a large area for solar panel installation. Additionally, flat roofs



There are some types of roofing materials that are not ideal for solar panel installation. For example, asphalt, metal, and tile shingles work great with solar panel installation without damaging the shingles or roof. On the other hand, slate, wood, and clay tiles are not ideal roofs for solar panels.



What are the benefits of installing rooflights on a roof with solar panels? So, why double up on installations? By combining solar panels with a rooflight, you can reap the benefits of energy-efficient photovoltaic panels and increased levels of natural daylight. As our rooflights are recessed and do not protrude from your existing roofline



At the very beginning, it is worth noting that the law does not prohibit the installation of photovoltaic panels on your own, but in accordance with the provisions and regulations of the OSD, in order for the installation to be connected, it is necessary to have an electrical qualification, construction license or a UDT certificate.