

WILL INSTALLING PHOTOVOLTAIC PANELS ON THE ROOF HAVE ANY IMPACT



How do roof materials affect solar panel efficiency? Roofing materials can affect solar panel efficiency negatively. Long-term solar panel presence may compromise roof integrity. The Good (Solutions) Proper sealant and flashing prevent water damage. Regular maintenance mitigates wear and extends lifespan. Understanding warranty terms protects roof and panels.



Do solar panels damage your roof? While solar panels themselves will not inherently damage your roof, an improper installation can lead to problems down the line. It is crucial to ensure that the installation is done correctly by a professional, or with thorough research and proper planning if you choose to do it yourself.



Can solar panels be installed on a roof? Solar panels are a popular choice for homeowners looking to reduce their carbon footprint and save on energy costs. However, installing solar panels on roofs can come with its own challenges and potential problems.



Can solar panels be installed on a combustible roof? In general terms, solar panels should not be installed on combustible roofs unless some form of fire protection can be installed between the panels and the roof e.g. concrete panels or pebble ballast.



3. Location of solar panels
Do solar panels compromise roof integrity? Long-term solar panel presence may compromise roof integrity. The Good (Solutions) Proper sealant and flashing prevent water damage. Regular maintenance mitigates wear and extends lifespan. Understanding warranty terms protects roof and panels. Professional assessment ensures compatibility and efficiency.

WILL INSTALLING PHOTOVOLTAIC PANELS ON THE ROOF HAVE ANY IMPACT



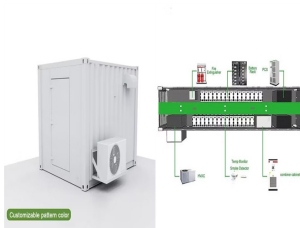
Do solar panels add weight to your roof? Additional Weight Solar panels can add significant weight to your roof, so it is crucial to ensure that your roof can support the additional load. Before installing solar panels, it is essential to have a professional assess the structural integrity of your roof and determine its weight-bearing capacity.



Regional impact of photovoltaic solar panels on planetary boundary layer. Sensible heat flux is decreased to 148.6 Wm^{-2} , -when cool roof installation is implemented on a standard



To install 6 panels on front roof plus 6 panels on the back roof CW birdguard with the inverter and battery in the loft, They tidied up and left around 7 in the evening with another 3 HR drive in front of them I have to say they did a fantastic job, I take my hat off to them, they are a credit to Nxtgen. Darren and Kelley from the Sales and admin team at Nxtgen are very helpful and ???



The number of solar panels you have installed on your roof can also impact the final price or solar quote you receive. It is possible to reduce the number of panels you need by choosing high-efficiency solar panels instead of regular units, ???



The impact of direction on solar panel output. Your solar panel system's direction is one of the biggest factors in determining its output. This chart below uses an average of 26 arrays in Yorkshire that all have peak power ratings of 4 kWp , and confirms that south-facing is the best direction.

WILL INSTALLING PHOTOVOLTAIC PANELS ON THE ROOF HAVE ANY IMPACT



are not intended for single residence dwellings (detached or connected), or to roof-integrated PV panel systems, i.e. those where the PV panels form part of the building envelope. While commercial ground-mounted PV systems are not covered in detail in this guide, the risk control principles discussed are similar.



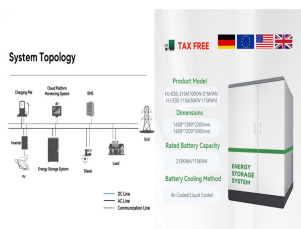
Any solar designer or specifier should give the same focus to ensuring the rooftop array is installed with methods that have as little impact as possible on the building and its waterproofing and that the array works to its maximum potential for its entire lifespan. Retrofitting photovoltaic panels brings all the benefits of low maintenance



A roof pitch will impact the amount of energy your solar panels collect from the sun ??? most are installed flush in-line with the roof pitch and raised a few inches above. So now you know what angle the panels should be mounted, how do ???



North-facing roofs are the least effective for solar panel installation in the UK. However, advances in solar technology have made it possible to achieve some level of efficiency even with north-facing installations. Even partial shading can significantly impact the efficiency of your solar panels. Assess the shading from nearby trees



In previous researches on the impact of PV installation on roof fire safety, 5,16 the values of h were set to about 10 cm. Therefore, h was defined as 5, 10, and 15 cm in this work.

WILL INSTALLING PHOTOVOLTAIC PANELS ON THE ROOF HAVE ANY IMPACT



The specific materials you'll need can vary depending on your location, the type of solar panels you're using, and the design of your solar energy system. However, here is a general list of materials and components commonly used in a solar panel installation: Solar Panels: These are the photovoltaic modules that convert sunlight into



South-facing panels give you the most bang for your buck because the sun crosses the sky in the south, giving the panels more sunlight. "We tell people that a solar panel costs the same amount regardless of what orientation it gets installed in," says Aaron Nitzkin, executive vice president of solar at Citadel Roofing and Solar in California (another ???



Installing Solar on a Standing Seam Metal Roof. Conveniently, installing solar on a standing seam metal roof does not require drilling holes, decreasing the risk of leakage or damage. Multiple manufacturers have developed specific solutions ???



A typical residential solar panel covers about 1.5 square metres, so even a small flat roof can accommodate a few panels. However, the more space you have, the more energy you can produce. Best type of solar panels for flat roofs. For the installation of solar photovoltaic panels on flat roofs, monocrystalline solar panels are often the best



There is of course technology to help reduce the impact of shading on a solar panel system, these are known as DC Power Optimisers. Installing either Solaredge or Tigo panel optimisers come with several ???

WILL INSTALLING PHOTOVOLTAIC PANELS ON THE ROOF HAVE ANY IMPACT



The first step in the solar panel installation guide is to install the mounts that will support the solar panels. These come in three primary types: pole, roof-ground, and flush mounts . Depending on the chosen mount, you ???



The solar panels must not be installed on a roof that faces a conservation area, unless the panels are flush with the roof or integrated into the roof covering. If your solar panel installation falls within these parameters, ???



Accessing the roof 8 . 8.1 Installing fall prevention 11 . the possible impact on people must be controlled using PPE. PERSONAL PROTECTIVE EQUIPMENT (PPE) GUIDE TO SAFE SOLAR PANEL INSTALLATION. 7. 6. SAFE INSTALLATION OF THE SOLAR PV SYSTEM. When conducting solar installations there are specific requirements that must be complied with



A study published by Nature Energy showed that the global environmental impact of creating solar panels is vastly outweighed by the environmental benefits of using them. Only 4% of the energy generated by a solar panel is offset by the energy required to create it ??? making solar power one of the world's cleanest renewable energies. 6.



However, it's still worth installing solar panels on a slate roof. The average household will save ?537 per year on its electricity bills, and break even in 17 years ??? leaving you plenty of time to enjoy the free energy your panels produce. Are there other solar panel options for a ???

WILL INSTALLING PHOTOVOLTAIC PANELS ON THE ROOF HAVE ANY IMPACT



Roof Condition. Before installing solar panels, evaluate the condition of your metal roof. If it's nearing the end of its lifespan, consider replacing or renovating it before the solar panel installation. **Maintenance.** Though metal roofs require minimal maintenance, periodic inspections are vital. Check for any signs of corrosion, especially



Where and how a PV array is installed will dictate the impact. If a PV array is ground-mounted next to the building, then the impact on the building may be significantly reduced. Where panels are fixed over the existing roof ???



CAA to date have been approved. If any aerodrome operator wishes to install solar PV outside of the licensed boundary (i.e. on the roofs of terminals or other buildings or adjacent land) then there is no requirement for the aerodrome operator or developer to ???



Roof-mount solar panel installations are less intrusive and invasive, and there is no need for extensive pre- and post-installation work or construction. Metal roofing is a well-known choice for solar panel installation ???



Solar panel system installations have little impact on those around them. As a carbon emission-free source of energy with very few moving parts, solar energy is a much stronger alternative for human health than electricity production from fossil fuels like coal and natural gas. Whether solar panels are installed on your roof or across the

WILL INSTALLING PHOTOVOLTAIC PANELS ON THE ROOF HAVE ANY IMPACT



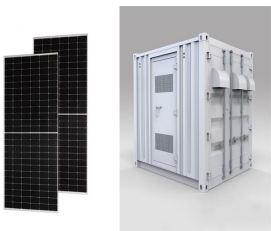
Roofing materials can affect solar panel efficiency negatively. Long-term solar panel presence may compromise roof integrity. The Good (Solutions) Proper sealant and flashing prevent water damage. Regular maintenance mitigates ???



Many factors impact if your home is suitable for installing solar panels, including the type of solar panel being installed, and the orientation and pitch of the roof. " Solar PV (photovoltaic) panels generate electricity from sunlight and will normally be installed on the roof of the building facing in the most south direction.



The relevant UK RISC Authority guidelines (R62) state that "the fitting of PV panel installations to combustible roofs should be avoided wherever possible". Whilst the UK Building Regulations ???



The installer is also faced with the dangers of handling potentially large and heavy equipment at height as well as ensuring that the installation of a solar PV system does not have a negative impact on the strength and integrity of the buildings ???



??? Solar panel installation is much easier if you have a useable loft space. But finding out the answers to the following questions will give you some insight about how effective a solar panel system would be on your roof. ???

WILL INSTALLING PHOTOVOLTAIC PANELS ON THE ROOF HAVE ANY IMPACT



Case Study: solar panel installation for an average UK home ??? House type: Semi-detached ??? Solar panels: polycrystalline 4kW ??? Number of panels: 10-14 ??? Solar panel cost, including installation: ?7000.00 (Actual price ranges from ?5,000 to ?9,000) ??? Estimated annual output: 3600 kWh (South of the UK) ??? Estimated Smart Export Guarantee Tariff: ?50.00 (SEG ???)