

WILL PHOTOVOLTAIC PANELS BE DAMAGED IF PLACED FLAT



Can a flat roof damage a solar panel system? Flat roofs can quickly accumulate standing water, damaging your solar panel system. You???ll need proper drainage to prevent water from pooling around the solar panels. You???ll also need a tilted mounting system to allow the rain to fall away from the surface of the solar panels instead of collecting on the flat surface.



Can solar panels be installed on a flat roof? You can choose from a number of different types of Solar Panels. Installing Solar PV Panels onto a Flat Roof is usually more discrete and barely visible from the ground. Flat roofs provide easy access and plenty of room for installation and maintenance. Disadvantages of installing solar on a flat roof?



Are flat roof solar panels better than tilted solar panels? Dirt Accumulation: Researchers found that flat roof solar panels are more likely to have dirt build up. Dust and droppings from birds can build up and cause severe losses in energy output if not properly maintained and cleaned. Space Issues: Flat roof solar panels need more space than those on tilted roofs.



How much do flat roof solar panels cost? Flat roof solar panels can cost between ?2,800 - ?12,100 for the average 2 to 3 bedroom house. Flat roof solar panels cost less in terms of labour costs since installation is easier (however this depends on your roof). One downside of putting solar panels on a flat roof is that they take up more space per kW.



Do you need planning permission to install flat roof solar panels? You usually need planning permission to install flat roof solar panels. Solar panels on pitched or tilted house roofs rarely require planning permission because they fall under the ???permitted development??? category ??? but that???s not the case with flat roof solar panels.

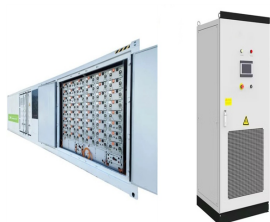
WILL PHOTOVOLTAIC PANELS BE DAMAGED IF PLACED FLAT



How far apart should solar panels be on a flat roof? However, as a general rule of thumb, you need about one metre between each row of solar panels on a flat roof. Building and safety regulations also require a minimum distance of 0.5-1m between the solar panels and the edge of the roof. Where is the best place to put solar panels on a roof?



With flat roofs, you don't have to worry about solar panels being positioned at steep angles or slopes that can make them susceptible to damage from heavy rain, strong winds, and snow. There's less risk from ???



Yes, you can install solar panels on flat roofs. For these panels, it's important to leave sufficient spacing between the solar panel rows for access and to prevent shading from one row onto the next. While a flat angle ???



If you are experiencing issues with your solar panel system, there are a number of potential causes, ranging from faulty wiring to panel damage. It is important to consult with a qualified professional to diagnose and ???



There are multiple solar panel grants for the purchase of panels and their installation, including the 0% VAT scheme and the ECO+ scheme. These can help alleviate some of the installation costs. However, dividing the responsibility of maintenance and solar panel upkeep can be tricky in apartments since they are shared spaces.

WILL PHOTOVOLTAIC PANELS BE DAMAGED IF PLACED FLAT



Flat roof solar racking is essential for any homeowner looking to install solar panels on their flat roof. The best solar panel mounting system will depend on the specific roof type and the homeowner's individual needs. There is a range of solar panel mounting systems options, ranging from DIY kits to professional installation.



Thanks to recent changes to permitted development rules, most installations on flat roofs won't need solar panel planning permission. So long as the panels aren't visible from the street and don't exceed 200mm above the ???



Flat solar photovoltaic (PV) panels are installed directly on the ground without the need for supporting structures or poles used with traditional panel systems. US-based energy technology developer, Erthos, is a clear example of a company investing heavily in ???



It's a challenge to fit solar panels on a flat roof because of the limited space. Solar panels on flat roofs require a larger edge zone (i.e. distance from the roof edge) of 0.5-1m, unlike sloped roofs that only need 0.2m, which ???



Flat roof solar panel mounting is usually done with ballasts, which can also incur extra costs during purchase. Ballasts can be around £60 to £120 per kilowatt on average but prices can vary based on sizes and whether ???

WILL PHOTOVOLTAIC PANELS BE DAMAGED IF PLACED FLAT

APPLICATION SCENARIOS



RC62: Recommendations for fire safety with PV panel installations 2

About Solar Energy UK (SEUK) Safety is the number one priority of the UK solar industry. Solar Energy UK members are committed to driving the highest possible standards across the sector, and this updated edition of RC62 will help to ensure that. The solar industry



The average home requires about 19 solar ground-mounted panels. Here are the back-of-the-envelope calculations used to reach this figure: Let's assume the use of 400-watt panels and a location that gets 4 peak sun hours per day. Each ???



"The fitting of PV panel installations to combustible roofs should be avoided wherever possible" (source - RC62). Solar Energy: Energy Storage Systems (ESS) For countries such as the UK which have variable weather patterns, the amount of electrical power generated from a solar PV installation will tend to vary. Solar PV panels also



If you lived on the equator, your solar PV panels would get most light at an angle of 0 degrees from horizontal ??? that is, lying completely flat on your roof, or on the ground. But in the UK and across much of the northern ???

1MWH

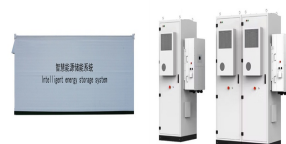


Well, the answer is simple. The labour costs for flat roof solar panel installations is lower than a pitched roof. Approximately 10% of the cost of installing solar panel systems is attributed to the cost of labour and safety ???

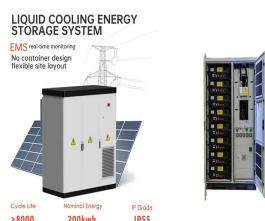
WILL PHOTOVOLTAIC PANELS BE DAMAGED IF PLACED FLAT



No, you generally won't need to get planning permission to install panels on a flat roof ??? so long as you comply with all the building regulations already in place. The panels themselves need to be at least a meter from the ???



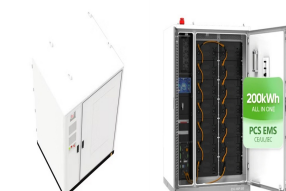
The impact of direction on solar panel output. Your solar panel system's direction is one of the biggest factors in determining its output. This chart below uses an average of 26 arrays in Yorkshire that all have peak power ratings of 4kWp, and confirms that south-facing is the best direction.



Best angle for solar panels on flat roofs. As we say, the fact you get to choose the angle your panels sit on a flat roof is a huge advantage. The optimum angle for a solar panel is between 30 and 40 degrees. Roofs in the UK can be pitched between 20 and 50 degrees, with most falling between 40 and 50.



whether the solar PV panels are going to be: ??? retrofitted onto an existing roof ??? roof integrated ??? used instead of tiles or other roofing materials ??? installed on a flat roof ??? ground mounted. Retrofitted roof panels Solar PV panels can be retrofitted onto an existing roof, on top of the tiles or other roofing materials, using roof

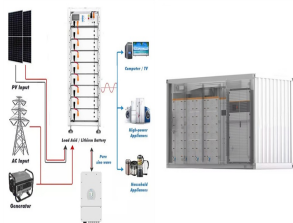


This reduces the chances of movement inside the box that could cause damage. If solar panel boxes are not available, use any rigid, sturdy box that fits the panels well. to prevent injuries. Panels should be loaded carefully onto the vehicle, ???

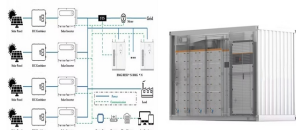
WILL PHOTOVOLTAIC PANELS BE DAMAGED IF PLACED FLAT



This means there are two different mounting systems to help ensure you get the best out of your solar panels on a flat roof. Solar panel mounting systems for flat roofs. A mounting system is critical for solar panels on a flat roof, as by using a framing system, the panels can be tilted toward the sun, enhancing their efficiency.



The cause of this is that when panels are horizontal, water sits at the lip between the glass coating and frame of this module. Given these are just sealed by silicon, like what you use in a bathroom to seal water out, this increases the risk that over 10 to 20 years, water can breach the barrier and damage the solar panel.



In this article, we'll discuss how efficient panels can be on flat roofs, the cost of a flat roof solar panel system and more. We'll also offer four tips for saving money upfront and over time on your flat roof solar array. This ???



In fact, most solar panel manufacturers offer a warranty that covers damage due to weather. Additionally, most home-owner insurance policies will also cover solar panels attached to your home. If you think that it's a good idea to cover solar panels during a storm??? especially one that will have intense hail ???then it makes sense to want to cover them up.



Putting a solar panel on a flat roof might sound impossible since you usually need a roof with an acceptable pitch in order to get the most out of the sun and harness as much solar energy as possible. But is it possible to install solar panels on flat roofs? Doing this will reduce any damage caused by uneven weight distribution and increase

WILL PHOTOVOLTAIC PANELS BE DAMAGED IF PLACED FLAT



Can You Put a Solar Panel On a Flat Roof? Yes, in the majority of cases you can put solar PV panels on a flat roof without any issues. Most modern buildings in the UK now have flat roofs, and it's possible to build solar ???



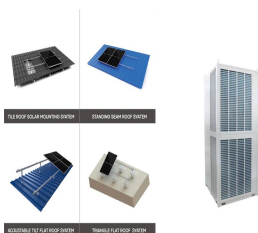
These mounts tilt your solar panels, exposing them to the sun for as much of the day as possible. The extra equipment typically results in a higher price tag for flat-roof solar panel systems. Why flat roof installations are usually easier and safer. Despite higher costs overall, labor is often cheaper in flat-roof installations.



Flat roofs provide plenty of space for solar panel installations. Because there are no slopes or barriers, a greater number of panels may be installed, enhancing electricity generation capacity. This benefit is especially beneficial for houses ???



Their expertise will prevent unnecessary damage and ensure optimal solar panel performance. We only work with the best. Read our guide about the MCS certification. Maintenance: Like all roofs, slate roofs with solar ???



And that's just as well, since they'll support the rails that keep your panels in place for 40 years or more. As with all other rooftop solar panel installations, you'll likely be covered by permitted development rights, which let homeowners move ahead with certain measures without needing to get planning permission. Solar panels

WILL PHOTOVOLTAIC PANELS BE DAMAGED IF PLACED FLAT



The Renogy 100w Flexible Monocrystalline Solar Panel is the best selection in this range. It has dependable performance and adaptability, bending up to 248 degrees. Other 100w products include the Giaride Flexible Solar Panel and the ALLPOWERS Flexible Solar Panel. The former bends to 30 degrees, and the latter has high-efficiency solar cells.



Most solar panel systems for flat roofs have a feature that allows you to change the degree of tilt after installation to suit your energy needs. Additionally, given the high chances of damage from water seepage, getting a warranty on panels with less than two degrees of tilt is generally challenging.