

WIND ENERGY STORAGE POWER STATION INSTALLATION SPECIFICATIONS



How can energy storage improve wind energy utilization?

Simultaneously, wind farms equipped with energy storage systems can improve the wind energy utilization even further by reducing rotary back-up. The combined operation of energy storage and wind power plays an important role in the power system's dispatching operation and wind power consumption .



Can energy storage control wind power & energy storage? As of recently, there is not much research done on how to configure energy storage capacity and control wind power and energy storage to help with frequency regulation. Energy storage, like wind turbines, has the potential to regulate system frequency via extra differential droop control.



What is a wind-energy storage hybrid power plant? As a result, a wind-energy storage hybrid power plant, as a kind of combined power generation system, has received a lot of attention. Many Chinese provinces have issued corresponding policies to encourage or require the construction of a certain proportion of energy storage facilities in new wind farms.



Why do wind turbines need an energy storage system? To address these issues, an energy storage system is employed to ensure that wind turbines can sustain power fast and for a longer duration, as well as to achieve the droop and inertial characteristics of synchronous generators (SGs).



How can large wind integration support a stable and cost-effective transformation? To sustain a stable and cost-effective transformation, large wind integration needs advanced control and energy storage technology. In recent years, hybrid energy sources with components including wind, solar, and energy storage systems have gained popularity.

WIND ENERGY STORAGE POWER STATION INSTALLATION SPECIFICATIONS



What is the largest combined wind power and energy storage project in China? This project is currently the largest combined wind power and energy storage project in China. The Inland Plain Wind Farm Project in Mengcheng County is owned by the Anhui Branch of Huaneng International. The project has a total installed capacity of 200MW, with a paired energy storage capacity of 20% and duration of one hour.



Integrating wind power with energy storage technologies is crucial for frequency regulation in modern power systems, ensuring the reliable and cost-effective operation of ???



Furthermore, we selected wind energy as a renewable resource because the potential of wind energy in Jeju island was favorable for a wind power system installation. The ???



A BESS collects energy from renewable energy sources, such as wind and or solar panels or from the electricity network and stores the energy using battery storage technology. The batteries discharge to release energy ???



This article provides a comprehensive guide on battery storage power station (also known as energy storage power stations). These facilities play a crucial role in modern power grids by storing electrical energy for later use. ???

WIND ENERGY STORAGE POWER STATION INSTALLATION SPECIFICATIONS



In an increasingly mobile world, energy storage containers are revolutionizing how we access and utilize power. These solutions are available in various configurations, including battery-powered, solar-powered, and ???



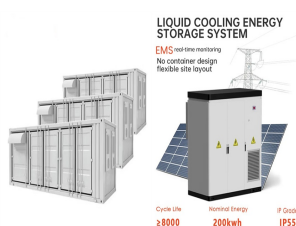
It outlines key applications of energy storage with wind power, including providing predictable power output and allowing greater utilization of wind power. This document is a pre-audit questionnaire for a filling station ???



Battery energy storage stations (BESS) can be used to suppress the power fluctuation of DG and battery charging, as well as promoting the consumption capacity of DG [9-11]. Based on this, ???



Our containerized offshore wind energy storage solution is purpose-built to enhance the efficiency and stability of offshore wind power systems by addressing challenges such as fluctuating energy production and ???



The energy industry is a key industry in China. The development of clean energy technologies, which prioritize the transformation of traditional power into clean power, is crucial ???

WIND ENERGY STORAGE POWER STATION INSTALLATION SPECIFICATIONS



Due to the inherent fluctuations of solar and wind energy resource, independent use of a single energy source in off-grid application usually leads to a considerably oversized ???



When it comes to energy storage systems for wind turbines, the cost can vary depending on several factors such as system capacity, storage technology, and installation requirements. To get an accurate cost estimate ???