

WIND POWER GRID TIE INVERTER TONGA



What is a small grid tie inverter & wind turbine system? We call the system combining with small grid tie inverter and wind turbine as ???SGWT???. The system includes wind turbine and small grid tie inverter and installation kit, and some ???SGWT??? also will include controller, dump load resistor. The inverter can be connected to any outlets of utility grid at house.



What is a grid tie inverter? Grid tie inverters, like any other inverter, convert DC power to AC power. A GTI???s grid-tie component allows energy to be transferred from a renewable source to the grid.



Are Aeolos wind turbines grid-tied? Aeolos wind turbines can be grid tied. They have been passed the Intertek test according to VDE-AR-N 4105:2011-08 and DIN VDE V 0124-100. This interface is a product for wind grid-tied wind turbines. It can be used on Aeolos 1kW, 2kW, 3kW, 5kW and 10kW wind turbine systems with CTW inverters.



Do I need a grid-tie inverter? In those cases there are very many suitable inverters ranging from just ?10 to many ?hundreds depending on your exact needs. If however you wish to connect your wind turbines and/or solar panels to the National Grid, you will need a Grid-tie Inverter ??? particularly if you intend to sell (export) electricity back to the utility company.



What is a wind turbine inverter kit? Our wind turbine Inverter kits utilise the latest in 6 or 12 pulse AFE technology (25kW- 2MW) allowing for unity Power Factors to be maintained. Many wind turbines only generate at a fixed speed relative to the frequency of the grid either 50Hz or 60Hz. This limits the efficiency at lower wind speeds and may not be able to generate at all.

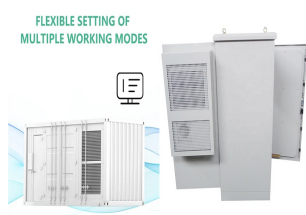
WIND POWER GRID TIE INVERTER TONGA



How does a wind turbine inverter work? The electricity produced is in DC so needs to be fed through an Inverter which in turn converts the electricity into AC which can be fed back into the Grid. Our wind turbine Inverter kits utilise the latest in 6 or 12 pulse AFE technology (25kW-2MW) allowing for unity Power Factors to be maintained.



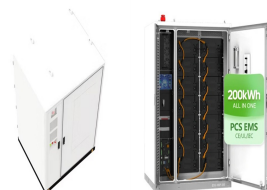
A wind turbine is a device that converts wind power (kinetic energy) into electricity. As the blades are turned by the wind, power is generated and sent back to the grid via a grid tie inverter. Turbines vary, some turn at a constant ???



The small wind grid tie power inverter can obtain the wind energy from wind turbine, and can tie to the grid through its output cables with no extra equipment. The installation is very convenient ???



What are grid tie inverters? Like any inverter, grid tie inverters change DC power into AC power. The grid-tie component of a GTI allows transfer energy from a renewable source into the grid. Being connected to the grid has ???



Input AC/DC Voltage Range. AC Output Voltage Range. Dimensions (W x H x D). 322 x 196 x 88 mm. Note: this is 1000w wind power grid tie inverter with limiter. Wind power grid tie inverter ??? ???

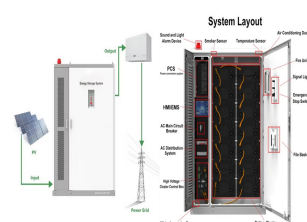


In general a grid tie inverter needs to be wired directly into your home electric circuit by a qualified electrician. However a simpler alternative has been on the rise recently ??? an inverter which you simply plug into a home ring main using a ???

WIND POWER GRID TIE INVERTER TONGA



In grid-tie operation, energy generated by the wind turbine is fed back to the grid. The grid-tie mode with battery backup allows generated wind power to be used for grid feed-in, load ???



The small type grid tie power inverter can obtain the wind energy from wind generators and can tie to the grid through its output cable with no extra equipment. The installation is very convenient and reliable. The system which ???



? Use our wind turbine specific grid-connection controlling algorithm, running with high efficiency, safety and reliability. ? Stackble for possible multi-units use. ? Highly reliable, numerous protection functions.



This interface is a product for wind grid tied wind turbines. It can be used on Aeolos 1kW, 2kW, 3kW, 5kW and 10kW wind turbine system with CTW inverters. The dump load resistance is combined in one box and isolate with the control ???



The small grid tie inverter monitors the volume, frequency and phase of the home utility grid, then produce pure sine wave AC power that the frequency and phase are as same as the grid's, ???