

WIND TURBINE INSTALLATION COST



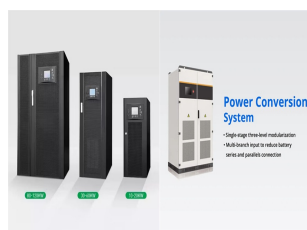
How much does a roof mounted wind turbine cost? Before you take the option of getting a roof mounted turbine you need to understand that it will probably not provide all the electricity you need (though it may well take the edge of increasing fuel bills over the next 20 years). The average cost of a roof mounted wind turbine is around ?3,000-?4,000 which will also need to be maintained.



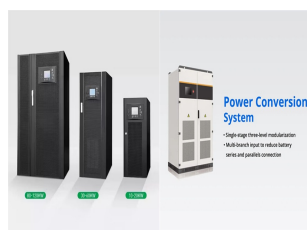
How much does a commercial wind turbine cost? Buying and installing a commercial wind turbine could cost anywhere from ?345,000 for a 100 kW turbine, to ?3.13 million for a 3.5 MW turbine. Usually, the bigger the turbine, the less you pay per kW. Forking out the initial outlay for a wind turbine can be challenging, but there are ways to make it easier.



How much money can a wind turbine make? In recent years, the soaring cost of energy (and the fact that it's fixed to the price of gas!) has made wind energy more profitable than ever. But the average 3.5MW turbine can make anything from ?2,790,000 to ?7,100,000. This is based on 100% on-site consumption and an electricity price rise of 3%.



How much does a wind turbine cost in the UK? In the UK, the cost of installing a wind turbine typically ranges from ?20,000 to ?50,000, influenced by various factors such as the size of the turbine, the specific location, and project requirements. These costs include labour, materials, and additional fees such as maintenance, transportation, and planning permits.

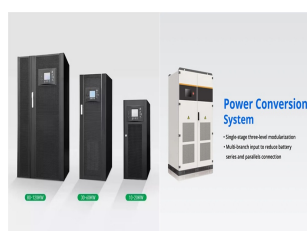


How much does a freestanding wind turbine cost? Freestanding wind turbines are more expensive to install, but they're much more effective if you're serious about going fully renewable or perhaps even benefitting from the Feed-in Tariff. Prices vary from around ?7,000 for a 1.5 kW freestanding wind turbine to around ?70,000 for a 15 kW one.

WIND TURBINE INSTALLATION COST



How much does a wind turbine maintenance cost? Regular maintenance is vital for ensuring the long-term efficiency and safety of a wind turbine. The average annual maintenance cost ranges from ?1,000 to ?3,000. Service Check: Routine inspections to ensure the system operates efficiently. Should be done annually.



on the cost of wind energy for land-based and offshore wind assembly, and installation), and financial costs (e.g., insurance and construction financing). Most of the land-based reference project LCOE (46.4%) is in the wind turbine itself, whereas the balance of system is the major



Commercial Wind Turbines Cost. How much do commercial wind turbines cost? A utility-scale wind turbine costs between \$1.3 million to \$2.2 million per MW of installed nameplate capacity. Most commercial-scale turbines installed nowadays are 2 MW in capacity and cost between \$3 and \$4 million to install.



Larger turbines help drive down the per MW cost of foundations, installation and operation, whilst reaching higher into the wind field, so increasing energy production per MW installed. Larger turbines drive a need for technology ???



An offshore wind project is likely to cost \$2,500/kW, of which c\$1,500/kW is turbines and \$1,000/kW is offshore wind installation costs. This data-file aims to estimate the breakdown by vessel type, day-rates and costs per turbine.



There are two main costs associated with owning a wind turbine: The upfront cost of the turbine and any associated installation work; The ongoing cost of maintenance; The American Wind Energy Association (AWEA) estimates the upfront cost of a wind turbine to range between

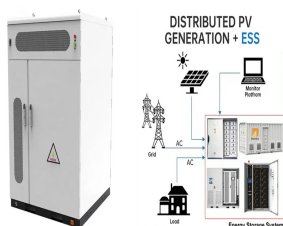
WIND TURBINE INSTALLATION COST

\$2,000 and \$5,000 per kilowatt of power capacity.

WIND TURBINE INSTALLATION COST



The cost for a commercial wind turbine in the UK ranges from ?1.3 million to ?2 million per MW installed, not including acquisition of the land. These costs include installation, connection to the UK grid, and often any required maintenance over the lifespan of the system. Offshore wind turbines are, understandably more expensive per MW



How much do they cost? A Bergey residential wind turbine costs approximately \$65,000 ??? 95,000 to install. The large range in costs is due to different types and heights of towers and variations in the amount of construction work required. Your Bergey dealer can do a site survey and provide you with a firm quotation.



The typical wind turbine is 2-3 MW in power, so most turbines cost in the \$2-4 million dollar range. Operation and maintenance runs an additional \$42,000-\$48,000 per year according to research on wind turbine ???



Back in 2010, wind turbine costs were between 44% and 78% higher than they are today and have been attributed to many key factors. Aside from the turbine's cost, even for smaller wind turbines, the installation cost can be high compared to other renewable energy sources. Several factors influence the cost of installation.



It costs an average of \$2,000 to install a wind turbine to provide electricity for your home. However, there is a varying range of prices depending on what kind of turbine and wind energy you need. You may pay as little as \$100 for a microturbine or as much as \$80,000 to power a large home. This guide breaks down the different types of wind turbines, and what ???



Types of Wind Turbines 1. Micro Wind Turbines. Capacity: Up to 1 kW Applications: Suitable for small-scale applications, such as powering a few household appliances or supplementing your main energy source. Advantages: Low cost, easy installation, minimal maintenance. 2. Small

WIND TURBINE INSTALLATION COST

Wind Turbines

WIND TURBINE INSTALLATION COST



Wind Turbine Installation Guide. How is a wind turbine installed? The length and complexity of the installation process depends upon the size and type of wind turbine. Prior to any installation it is necessary to commission a ???



Using more or larger wire will also increase your installation cost. Your wire run losses are greater when you have direct current (DC) instead of alternating current (AC). If you have a long wire run, it is advisable to invert DC to AC. Sizing Small Wind Turbines Small wind turbines used in residential applications typically range in size from



The cost of a wind turbine varies depending on who manufactures and installs it. But generally, your average 15kW turbine will cost around ?70,000, while commercial 3.5 MW turbines can cost upwards of ?3.13 million!. Generally, the larger your wind turbine is, the more energy it's able to harness.



In Wales and Northern Ireland, you'll need to apply for planning permission to install any kind of wind turbine. How much does a home wind turbine cost? The cost of a domestic wind turbine depends on what type you ???



This page contains information about wind farm costs (both as lifetime costs and a detailed cost breakdown) and about levelised cost of energy. Costs I.6 Floating offshore wind turbine installation; I.6.1 Tow-out; I.6.2 Mooring line ???



One commonly cited number from the American Wind Energy Association pegs the cost of small wind at between \$3,000 and \$5,000 for every kilowatt of generating capacity, meaning costs could range from as low as ???

WIND TURBINE INSTALLATION COST



The cost of a wind turbine system may vary considerably so make sure you get at least three quotes from reputable MCS accredited installers. Do as much research as possible! All MCS approved installers should be able ???



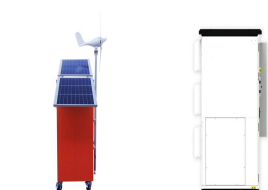
Onshore wind turbines cost about \$2 million to \$4 million while offshore wind turbines cost significantly more, in the tens of millions of dollars. Learn How to Install Wind Turbines at UTI At UTI, we have designed wind technology courses that can take students through the fundamentals of wind energy paired with hands-on training in labs.



4. CURRENT COST OF WIND POWER 18 4.1. A breakdown of the installed capital cost for wind 4.2 Total installed capital costs of wind power systems, 1980 to 2010 4.2.1 Wind turbine costs 4.2.2 Grid connection costs 4.2.3 Civil works and construction costs 4.3 Operations and maintenance costs 4.4 Total installed cost of wind power systems 5.

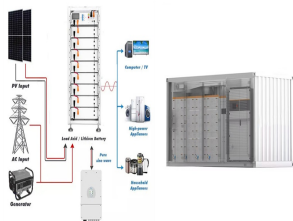


Wind Power Plants in India seen a phenomenal growth of around 33% CAGR in the last 5 years and the total capacity at end of 2010 was 11800 MW with most of the capacity installed in the state of Tamil Nadu which is the largest state in terms of Alternative Energy Capacity in India. GWEC has set an ambitious target of 65 GW for Wind Energy in India by 2020 which ???



Home wind turbine cost. A home wind turbine costs \$20,000 to \$80,000 with installation before the federal tax credit. The average home uses 900 to 1,000 kWh per month in electricity and requires a wind turbine rated for at least 5 to 15 kW to cover most of or all the home's energy needs.

WIND TURBINE INSTALLATION COST



What Happens with a Wind Turbine Installation? How much is your Wind Turbine Going to Cost? That's the \$64,000 question ??? you will have a budget in mind but how do you know if your installer is charging you a fair price? The costs of a wind turbine can vary quite dramatically, even within the same category.



Although onshore wind electricity as a whole has declined in price by 70% within the last 10 years, the manufacturing and installation of wind turbines still cost a lot. Breakdown Of Wind Turbine Cost Average sized commercial wind turbines cost \$2.6 ??? \$4 million per wind turbine. You can expect typical costs to be about \$1.3 million per



The cost of a wind turbine varies depending on who manufactures and installs it. But generally, your average 15kW turbine will cost around \$70,000, while commercial 3.5 MW turbines can cost upwards of ???



The price of your new small wind turbine depends on quality, installation and efficiency. But ongoing service must also be taken into account! A 5kw turbine can also be a cost-effective alternative for certain types of businesses that want to have their own production of sustainable electricity. Installation price for small wind turbines.



How much does it cost to buy a wind turbine? As you can imagine this varies greatly depending on the size ??? farm wind turbines in the range 5kW ??? 500kW would typically cost from around \$30,000 to \$1.5million. How much electricity can one wind turbine generate? Again, the size of the turbine can vary hugely, as can the amount