

# ZFS STORAGE APPLIANCE MACAO



Oracle (R) ZFS Storage Appliance Administration Guide June 2014. This guide describes how to administer the Oracle ZFS Storage Appliance. Document Information; Using This Documentation. Product Documentation Library; Access to Oracle Support; Feedback; 1 Oracle ZFS Storage Appliance Overview. ZFSSA Key Features;



Oracle ZFS Storage Appliance architecture is designed for flexibility, offering a number of network connection options. File-based services can be configured using Ethernet and InfiniBand network adapter options. Block-based (LUN) services can use either network (iSCSI) or Fibre Channel adapter options.



ZFS Storage Appliance?? 3/4 ??????Oracle Cloud Infrastructure??,??(R)????? 1/4 ?????(R)????????????????? 1/4 ??? 1/4 ??,????????? 1/4 ?????(R)?????????????????(R)?????-?????,????????????????????<?? ????????????????????? 3/4 ???



A system update for Oracle ZFS Storage Appliance is a binary file that contains new management software as well as new hardware firmware for your storage controllers and disk shelves. Its purpose is to provide additional features, bug fixes, and security updates, allowing your storage environment to run at peak efficiency.

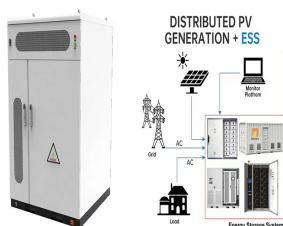


addresses the design and operation of Oracle ZFS Storage Appliance in a Fibre Channel-based infrastructure. See "Appendix C: References," for further details. Oracle ZFS Storage Appliance Network Architecture The following sections describe both the network architecture of Oracle ZFS Storage Appliance and its options, and the

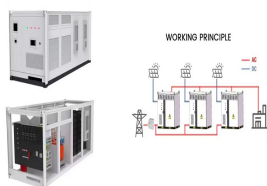
# ZFS STORAGE APPLIANCE MACAO



Integraciones en Oracle La automatizaci3n reduce las cargas de trabajo del administrador. Oracle Intelligent Storage Protocol (OISP) permite a ZFS Storage Appliance automatizar la configuraci3n y el ajuste del almacenamiento en funci3n de informaci3n espec3fica de la base de datos, lo que reduce las cargas de trabajo del administrador de almacenamiento hasta en un 70 %.



ZFS Storage Appliance integrates the same object storage format as Oracle Cloud Infrastructure (OCI) and makes it easy for storage administrators to create snapshots in the cloud, reducing storage complexity and simplifying data ???



Oracle ZFS Storage Appliance ZS9-2. Oracle ZFS Storage Appliance is a high performance, enterprise storage system that is optimized for Oracle workloads and cloud integration. It is a unified storage system that allows customers to consolidate file, block, and object storage on a ???

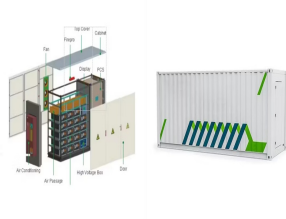


Oracle ZFS Storage Appliance provides an integrated cloud snapshot backup feature that reduces on-premises costs and provides flexible archive and recovery options. An Oracle ZFS Storage image is available in OCI Marketplace to assist Oracle customers migrating workloads and ???

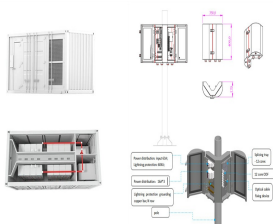


The command line is an efficient and powerful tool for repetitive administrative tasks. The appliance presents a CLI available through either the Console in Oracle ZFS Storage Appliance Installation Guide, or SSH. There are several situations in which the preferred interaction with the system is the CLI, as follows:

# ZFS STORAGE APPLIANCE MACAO



The Oracle ZFS Storage Appliance storage controllers are based upon powerful Oracle x86 Servers that can deliver the exceptional compute power required to concurrently run multiple modern storage workloads along with advanced data services. Each Oracle ZFS Storage Appliance can be configured as a single controller or as a dual-controller system.



1 Oracle ZFS Storage ZS7-2 controller . 2 Two power cords . 3 Slide rail kit . 4 Cable management arm . 5 One 6-meter Ethernet cable (black) . 6 Three 2.5-meter Ethernet cables (black, yellow, green)



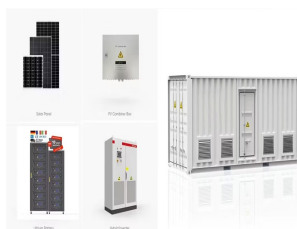
Oracle ZFS Storage: THE Choice for Oracle Workloads and More. The ZS9-2 is the only storage system that can provide an all Oracle solution connecting servers, appliances, and storage at 100GbE, including the recently announced Oracle Exadata X9M, the fastest and most available platform to run Oracle Databases.



2 | ORACLE ZFS STORAGE APPLIANCE OR ACL E D AT A SH E ET As proof of exceptional performance in varied workloads, Oracle publishes high results in many industry-standard public benchmarks<sup>2</sup>. Superior Efficiency Oracle ZFS Storage Appliance features an advanced set of management and analytics



Sun ZFS Storage Appliance Oracle Exadata. Exadata? 1/4 ? Sun ZFS Storage Appliance Oracle Exadata. ; . ???



Licensing Information User Manual Oracle ZFS Storage Appliance Software, Release OS8.8.x. HTML PDF. Licensing Information User Manual Oracle ZFS Storage ZS7-2, Release OS8.8.x. HTML PDF. Oracle ZFS Storage ZS9-2 License Information Manual, Release OS8.8.x. HTML

# ZFS STORAGE APPLIANCE MACAO

---

PDF. Oracle Storage Safety and Compliance Guide.

# ZFS STORAGE APPLIANCE MACAO



All storage access uses the very fast and robust 100GbE internal network built into every PCA X9-2. The Oracle ZS9-2 Storage Appliance is a high performance, network attached storage subsystem building on the long success of the Oracle ZFS Storage Appliance product line and providing multi-protocol storage access in a highly available cluster.



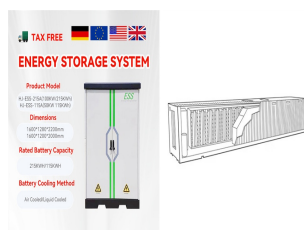
Completion of this Learning Path is strictly for authorized Support Provider / Field Delivery Support Provider Partners. Unauthorized use can void OPN Membership. Note: A Learning Subscription is required for the optional Oracle ZFS Storage Appliance Administration course, which includes an additional 13h 26m of training content.



The latest Oracle ZFS Storage Appliance Racked System ZS9-2 is a 42RU chassis that houses two powerful 2RU x86 controllers. These controllers power the storage subsystem, which can be built with hard disk drives (HDDs) for capacity or solid-state drives (SSDs) for performance. The Oracle ZS9-2 is the 7th generation of Oracle ZFS Storage



This document provides instructions on how to configure the Oracle ZFS Storage Appliance Simulator. The Simulator introduces you to the power and simplicity of the Oracle ZFS Storage Appliance software using VirtualBox or VMware Workstation and is identical in every way to the appliance version, with the exception of clustering. Simulator



Oracle ZFS Storage Appliance ??<?????????. Oracle ZFS Storage Appliance ??(R)???; ?????????>>???????????????????? 1/4  
 ????????????????? 1/4 ????????????? 1/4 ?????????????????????????????<??  
 1/4 ??,??????. ?????????>>???????????????????? 1/4 ; ????????????? 1/4  
 ????????????? 1/4 ?????????????????<?? 1/4 ??,?????; ??u????? 1/4  
 ?????????????????????????-????????<;  
 ?????????(C)????????????????(R)????? 1/4 ???

# ZFS STORAGE APPLIANCE MACAO

---



Oracle ZFS Storage Appliance Key Features. Oracle ZFS Storage Appliance includes technologies to deliver the best storage price/performance and unprecedented observability of your workloads in production, including: DTrace Analytics, a system for dynamically observing the behavior of your system in real-time and viewing data graphically